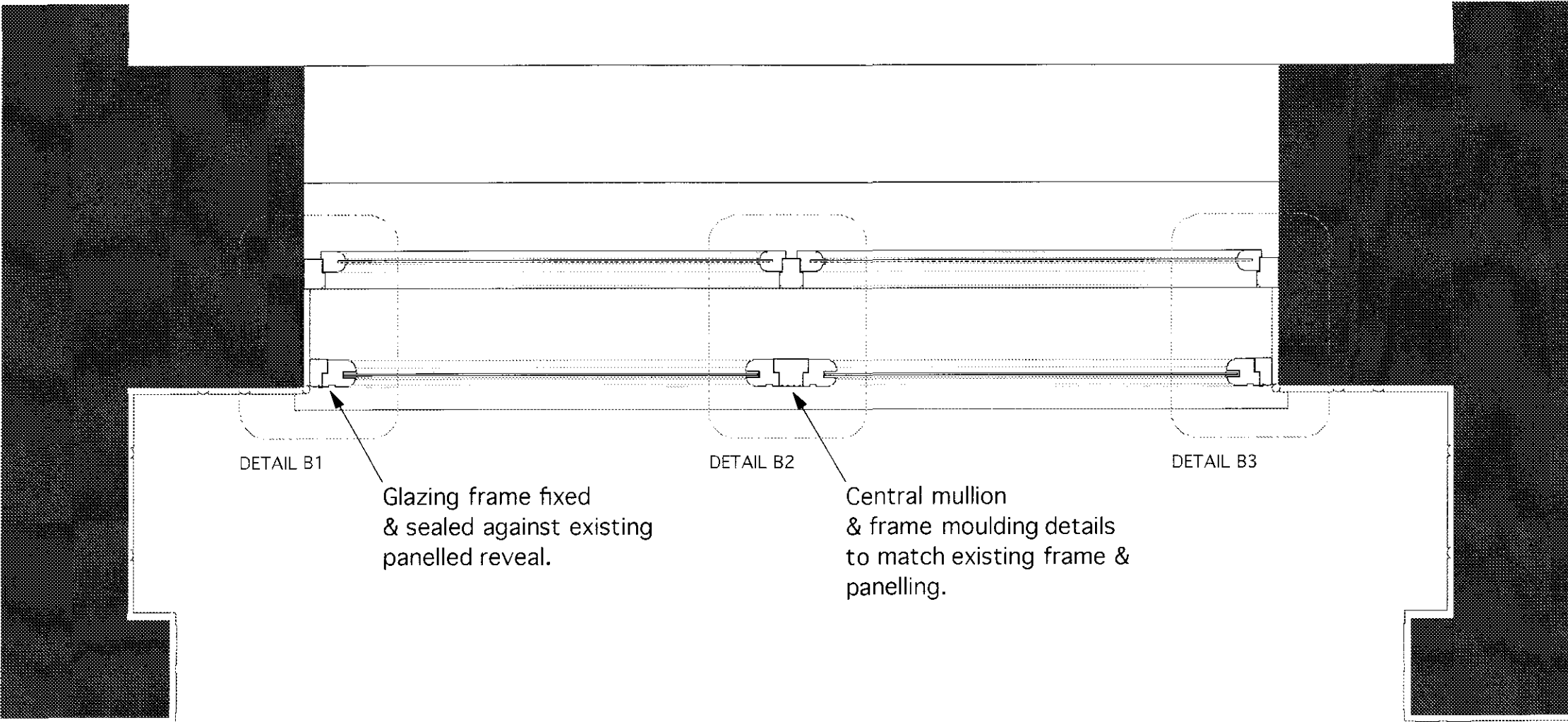
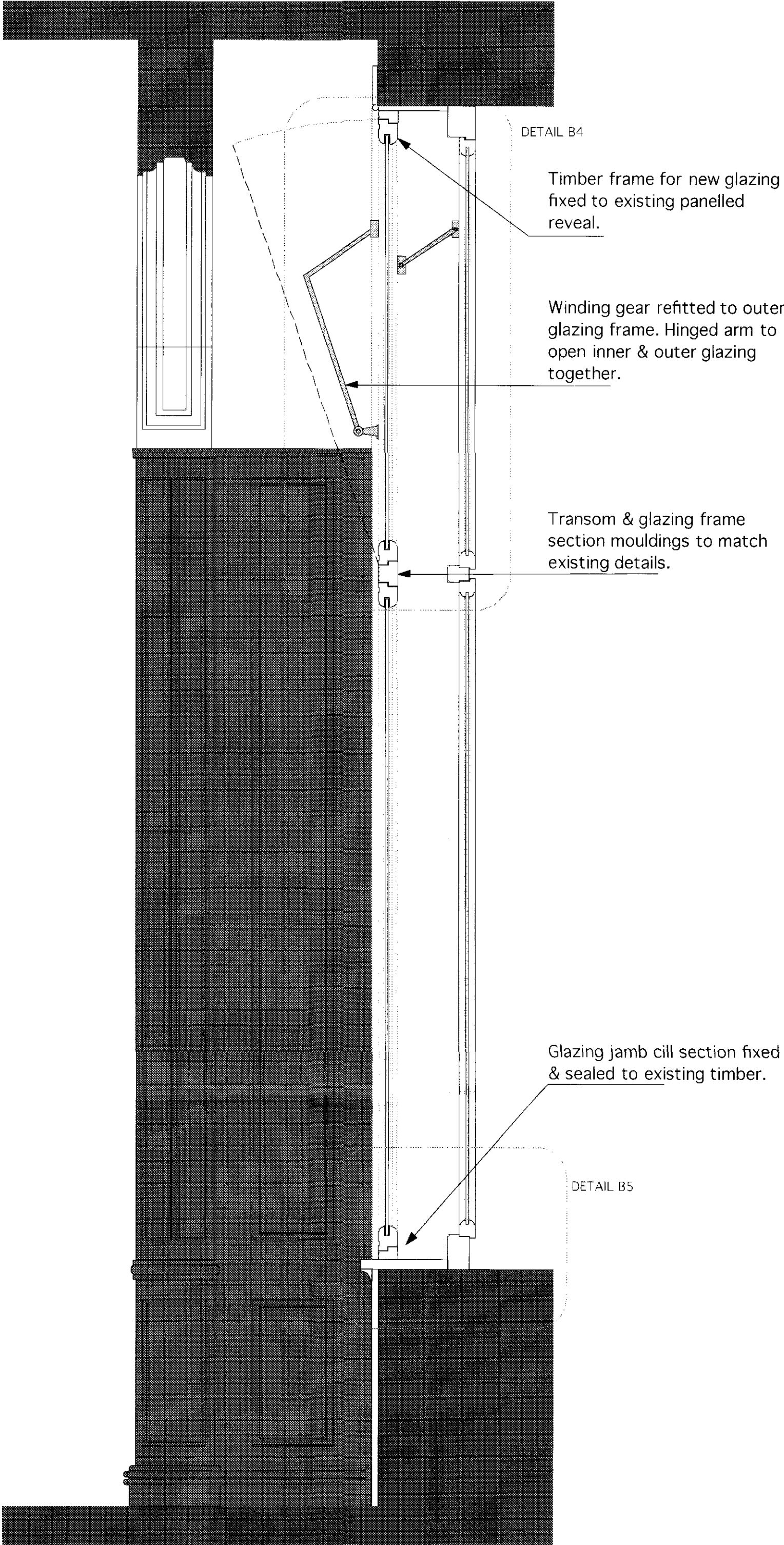




RG11 Typical Type 1A Window Elevation  
Scale: 1:10



RG11 Plan Section Through Type 1A Window  
Scale: 1:10



RG11 Section Through Type 1A Window.  
Scale: 1:10

Timber framed secondary glazing units formed within existing timber framed reveal in listed boardroom. Single glazed panels with timber frame mouldings to match existing details.

Secondary glazing frame fixed and sealed against existing casing.

Finish to all new timber sections to match adjacent panelling.

Existing window winding gear removed from windows and fitted to secondary glazing with hinged bar between fan lights to allow both to open together.

**Notes**  
**DO NOT SCALE** (Use figured dimensions only).  
Critical dimensions are identified thus: \*  
Contractor to verify ALL dimensions prior to commencing work.  
Any discrepancies are to be reported to Tilney Shane Ltd. All setting out is to be approved PRIOR to fabrication.  
  
This drawing is to be read in conjunction with all other relevant design and contract information.  
  
Use of this drawing by third parties in the preparation of their own design information is unwarranted by Tilney Shane Ltd, and is the users sole risk.  
  
The accuracy of electronic copies (or hardcopies thereof) is unwarranted by Tilney Shane Ltd.  
  
Copyright of design and drawings reserved by Tilney Shane Ltd.

**Deleterious Materials**  
The contractor shall not specify or permit to be used in the Works any substances generally known to be deleterious, including but not limited to: substances not in accordance with statutory requirements, British Standards and Codes of Practice, good building practice or which are published in the Building Research Establishment Digests as being deleterious at the time of incorporation within the Works.

P	16.09.11	FOR PLANNING APPROVAL	AB
Rev	Date	Notes	Checked

This drawing is to be read inconjunction with tilney shane ltd construction drawings, NBS specification and Is schedules.

Client	Royal College of General Practitioners		
Scale	1:10 @ A1		
Date	22.07.2011		
Drawn by	RS	Ckd. by	SFE
		App. by	AB
Project	RG10 - 30 Euston Road		
Title	TYPE 1A (Listed areas) Secondary Glazing Details		
	Boardroom Windows		
Dwg no.	RG10.2417		P
Drawing Status FOR PLANNING APPROVAL			



Royal College of General Practitioners

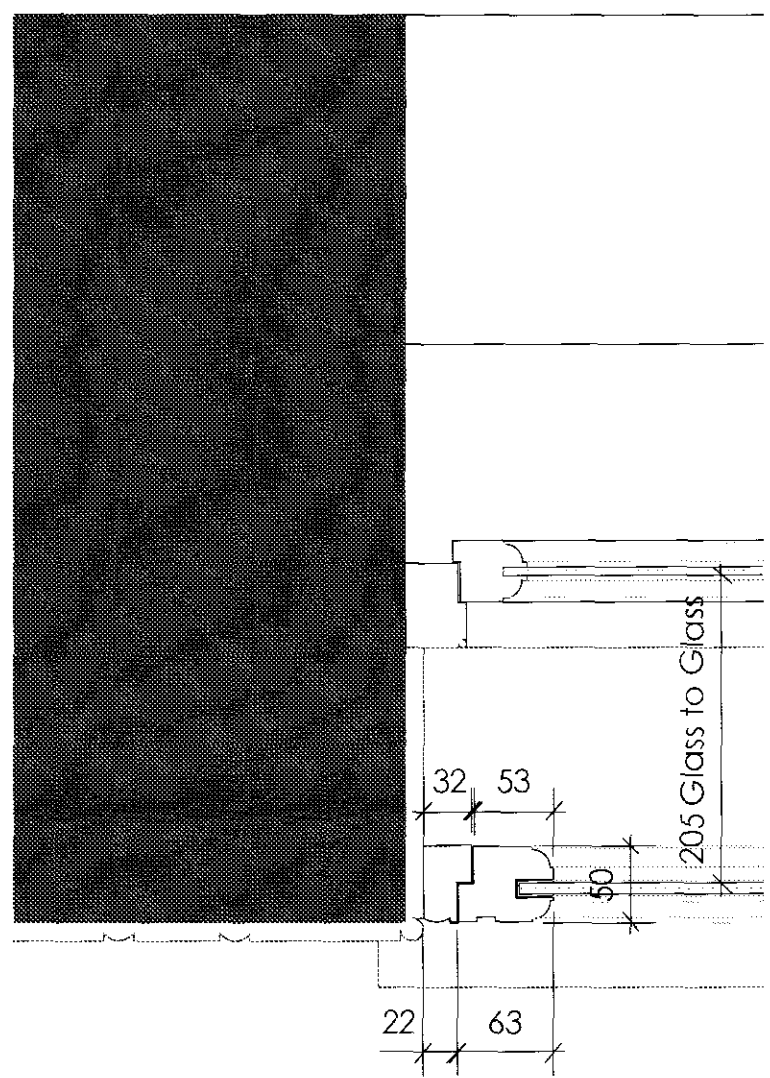




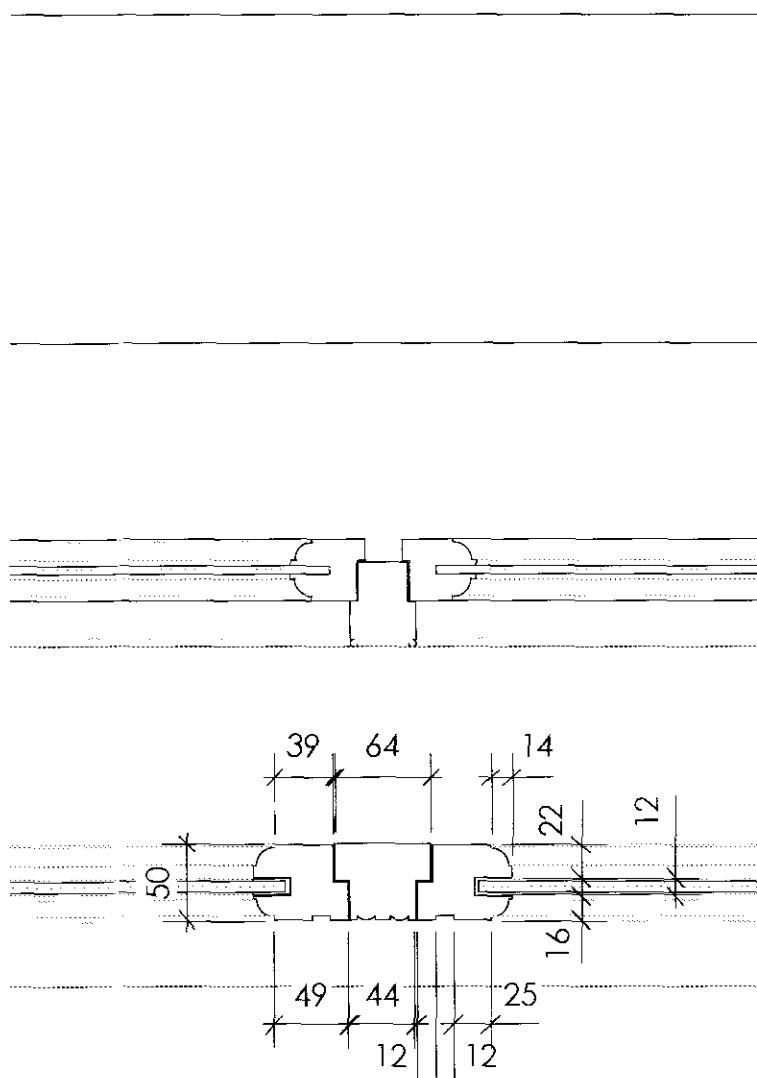


tilney shane limited  
5 heathmans road london SW6 4LJ  
t 020 7731 6946 f 020 7736 3356  
www.tilneyshane.co.uk

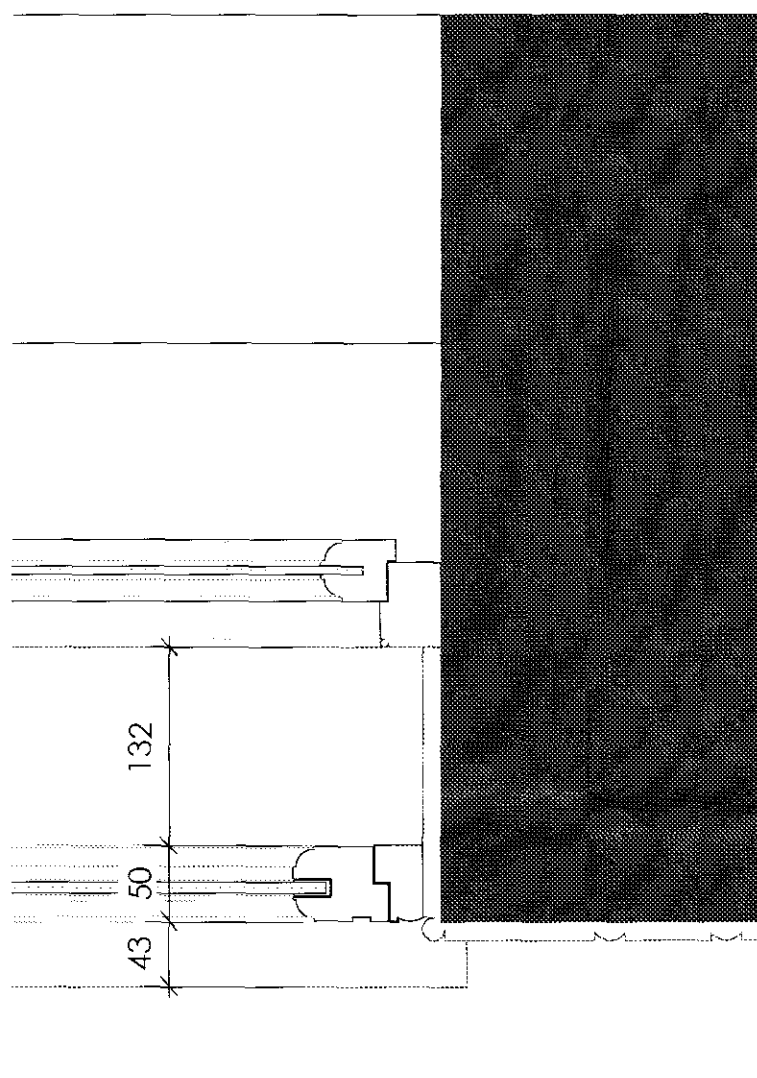




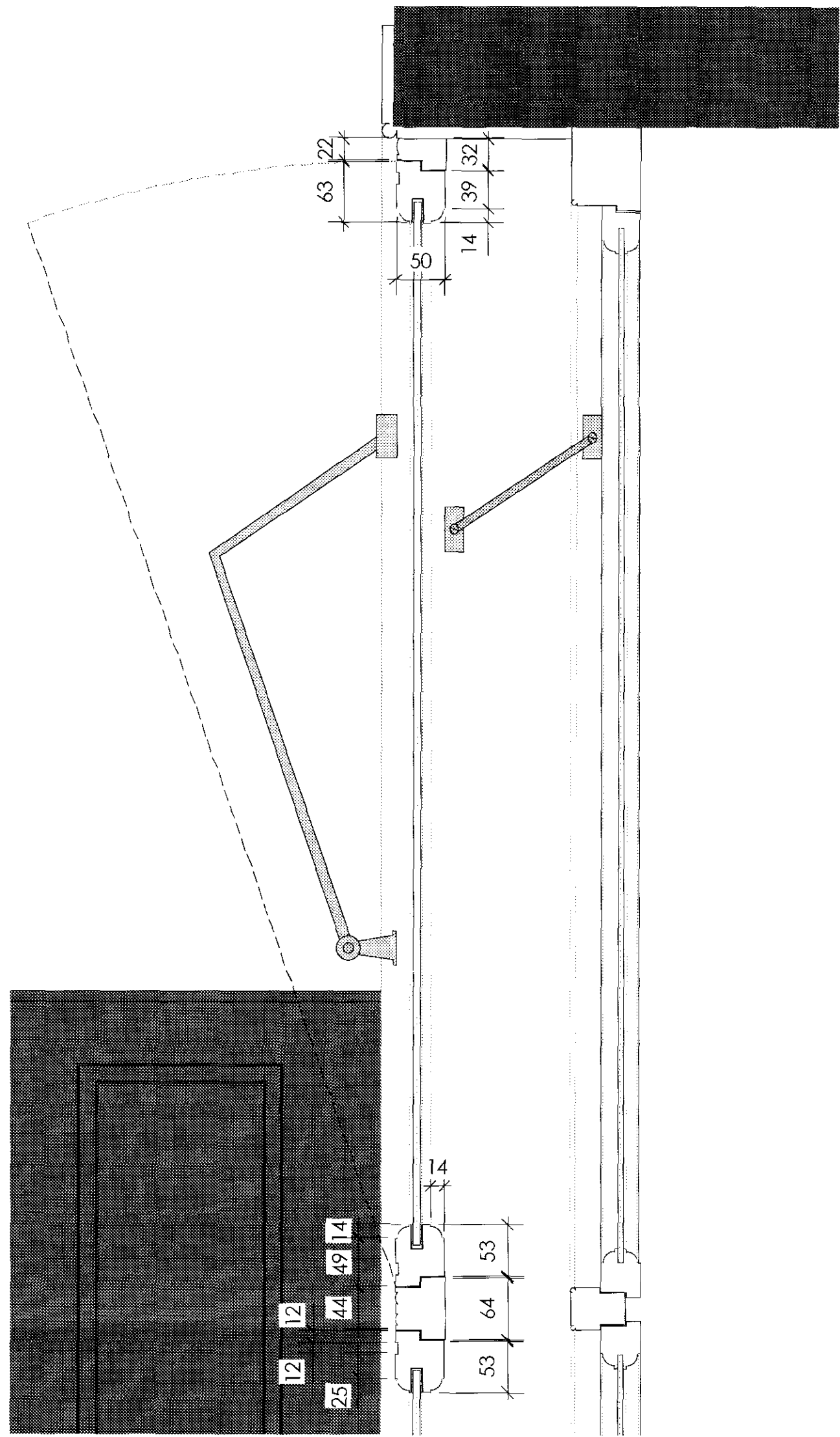
RG11 Detail B1 - LH Reveal & Glazing Jamb  
Scale: 1:5



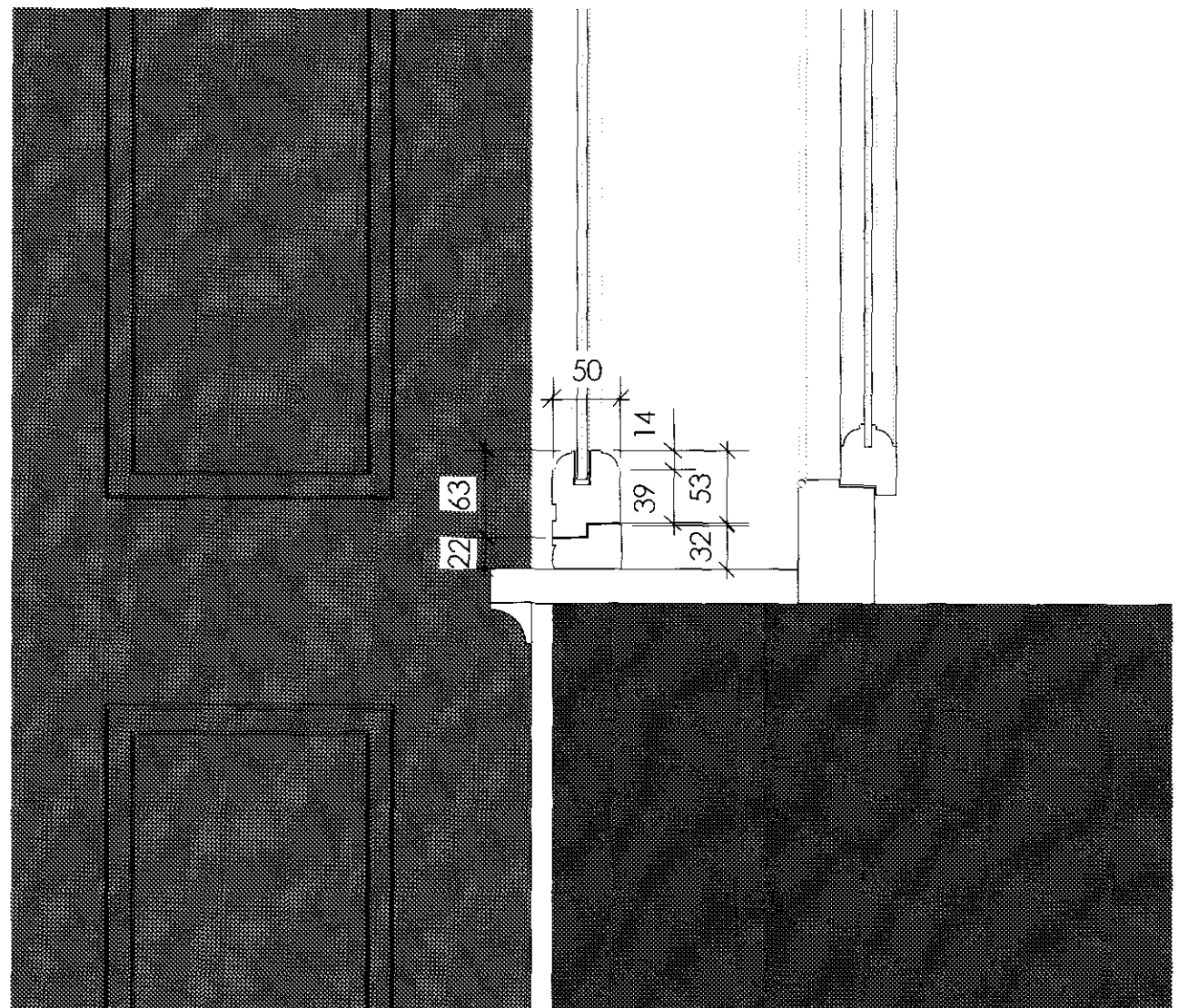
RG11 Detail B2 - Glazing Mullion & Frame  
Scale: 1:5



RG11 Detail B3 - RH Reveal & Glazing Jamb  
Scale: 1:5



RG11 Detail B4 - Glazing Top light & Transom  
Scale: 1:5



RG11 Detail B5 -Window cill & Glazing Frame  
Scale: 1:5

**Notes**  
**DO NOT SCALE** (Use figured dimensions only).  
Critical dimensions are identified thus: \*  
Contractor to verify ALL dimensions prior to commencing work.  
Any discrepancies are to be reported to Tilney Shane Ltd.  
All setting out is to be approved PRIOR to fabrication.

This drawing is to be read in conjunction with all other relevant design and contract information.

Use of this drawing by third parties in the preparation of their own design information is unwarranted by Tilney Shane Ltd. and is the users sole risk.

The accuracy of electronic copies (or hardcopies thereof) is unwarranted by Tilney Shane Ltd.

Copyright of design and drawings reserved by Tilney Shane Ltd.

**Deleterious Materials**  
The contractor shall not specify or permit to be used in the Works any substances generally known to be deleterious, including but not limited to substances not in accordance with statutory requirements, British Standards and Codes of Practice, good building practice or which are published in the Building Research Establishment Digests as being deleterious at the time of incorporation within the Works.

P	16.09.11	FOR PLANNING APPROVAL	AB
Rev	Date	Notes	Checked

This drawing is to be read inconjunction with  
tilney shane ltd construction drawings,  
NBS specification and ts schedules.

Client	Royal College of General Practitioners		
Scale	1:5 @ A1		
Date	22.07.2011		
Drawn by	RS	Ckd. by	SPE
		App. by	AB
Project	RG10 - 30 Euston Road		
Title	TYPE 1A (Listed areas) Secondary Glazing Details		
Boardroom Windows			
Dwg no.	RG10.2418		P
Drawing Status FOR PLANNING APPROVAL			



Royal College of  
General Practitioners



tilney shane limited  
5 heathmans road london SW6 4TJ  
t 020 7731 6946 f 020 7736 3356  
www.tilneyshane.co.uk