

30A HIGHGATE ROAD NW5 1NS

APPLICATION DRAWINGS

Version 49

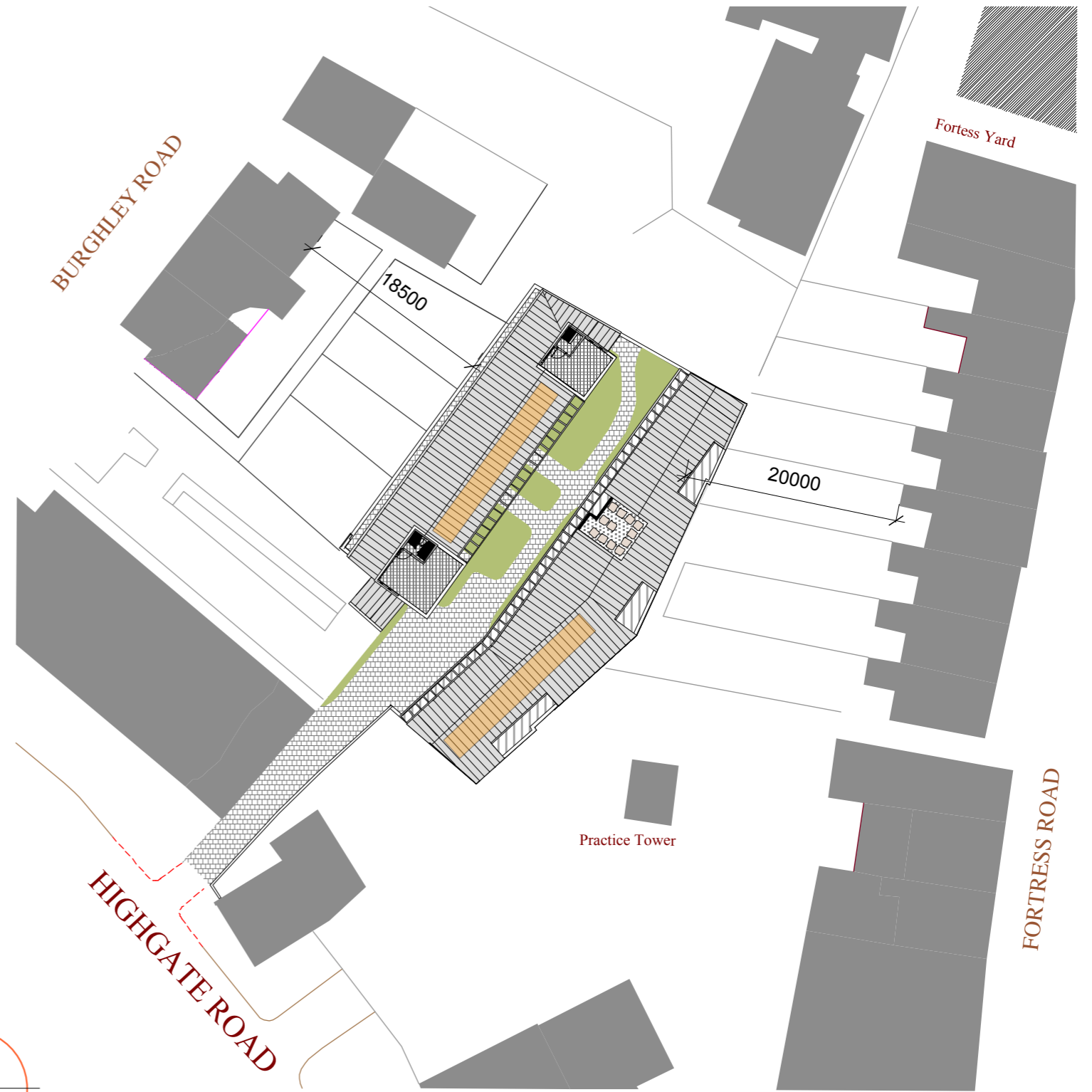
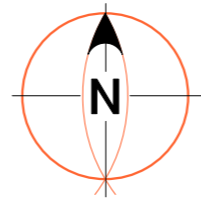
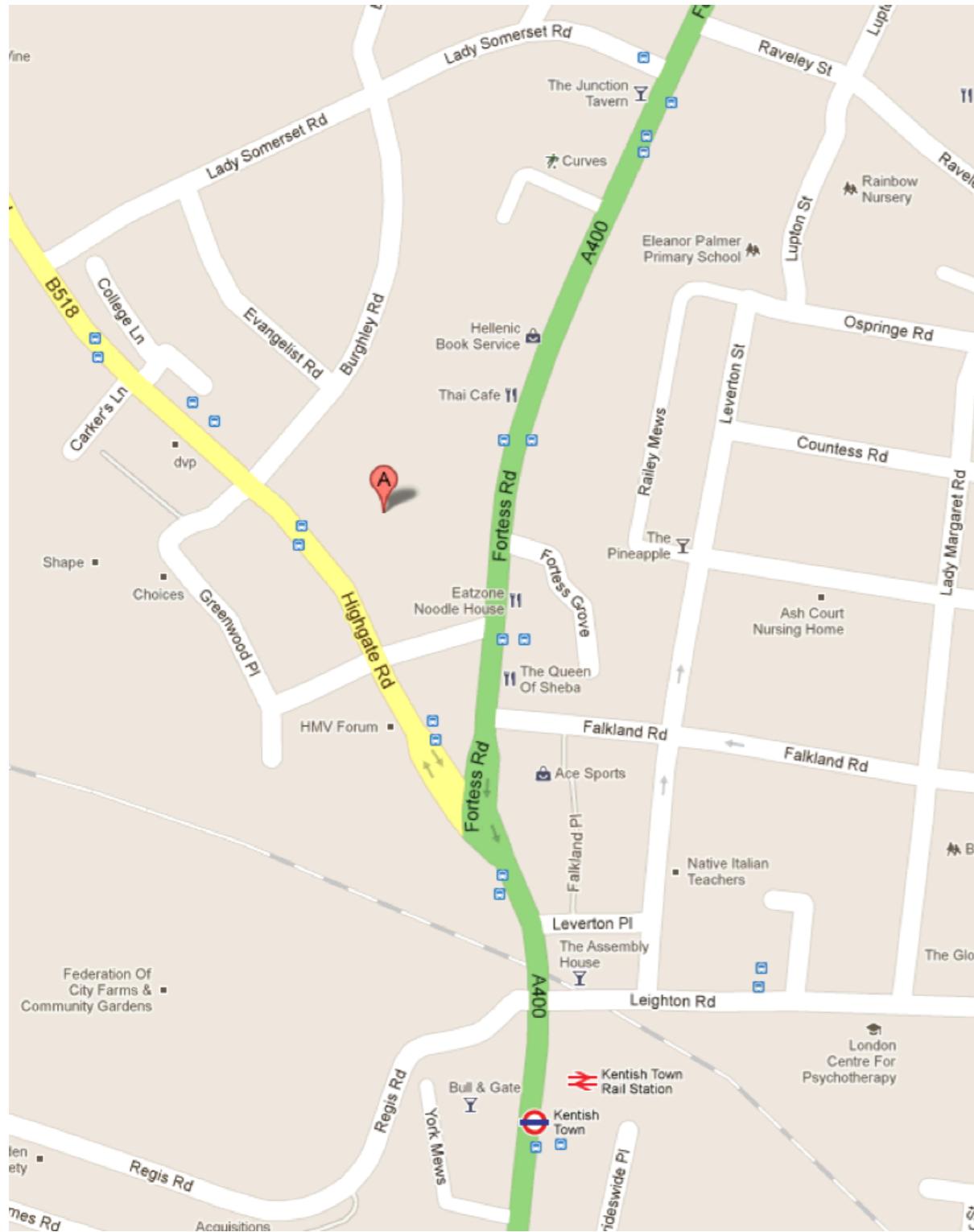
- 03 Site Location Plan
- 04 Ground Floor Plan
- 05 First Floor Plan
- 06 Second Floor Plan
- 07 Roof Plan

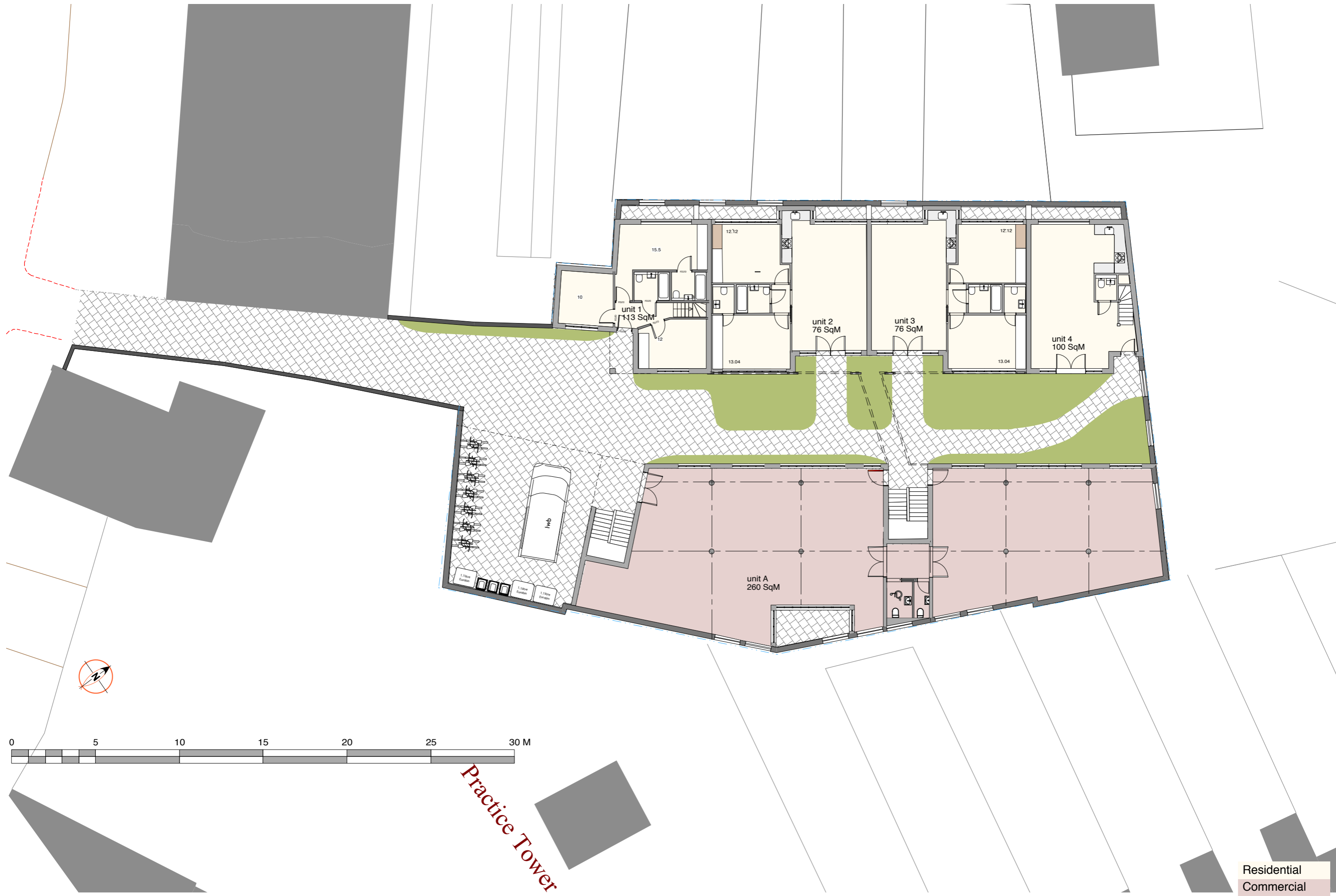
- 08 Flat Plans: Units 2, 3, 5 & 6
- 09 Flat Plans: Units 7, 8 & 9
- 11 House Plans: Unit 1
- 12 House Plans: Unit 4

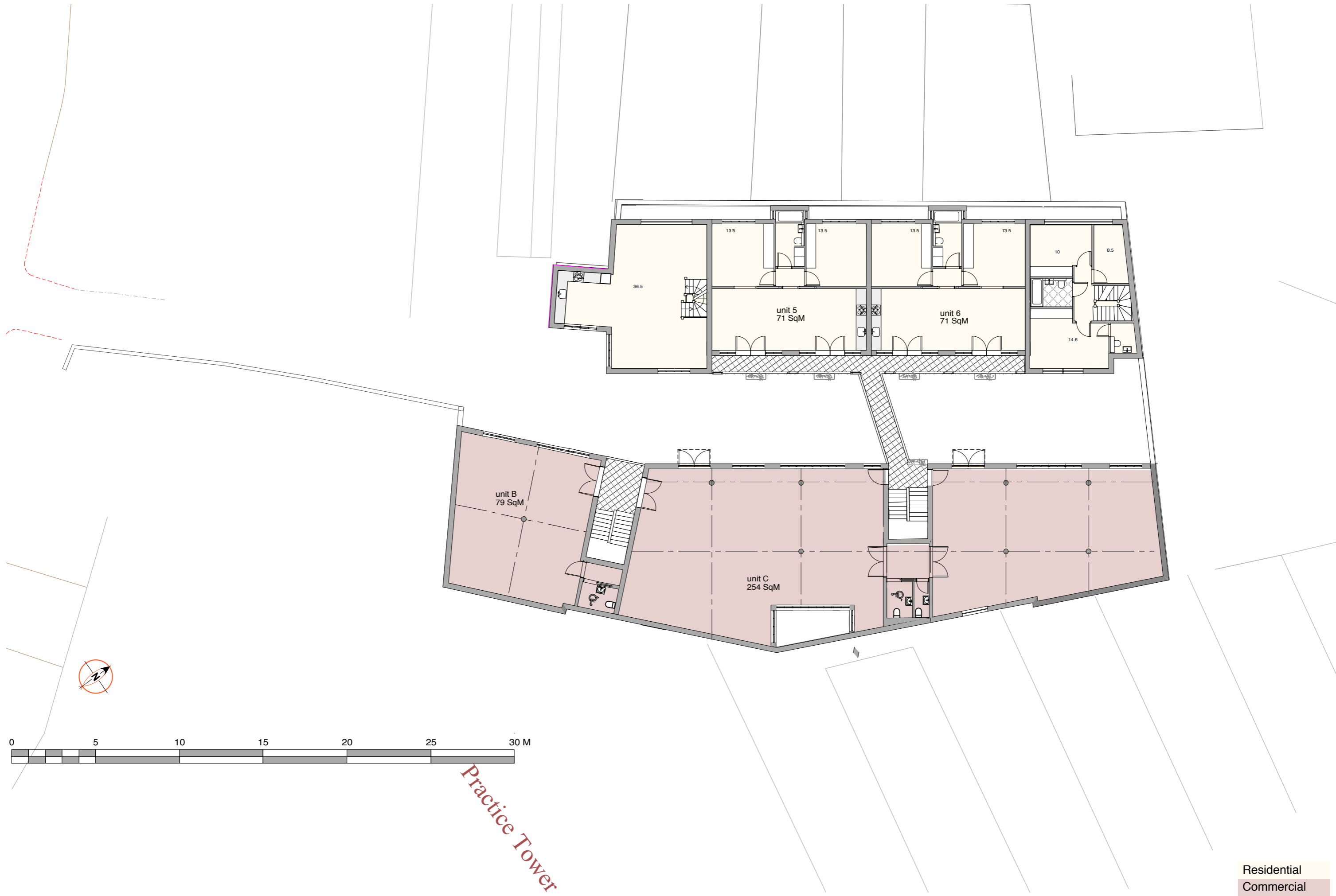
- 13 SE Elevation in Courtyard
- 14 NW Elevation in Courtyard
- 15 NW & NE Elevations - External
- 16 SE Elevation - External

- 17 Sections A, B & C
- 18 Sections D, E & F

- 20 Detail Residential
- 21 Detail Commercial

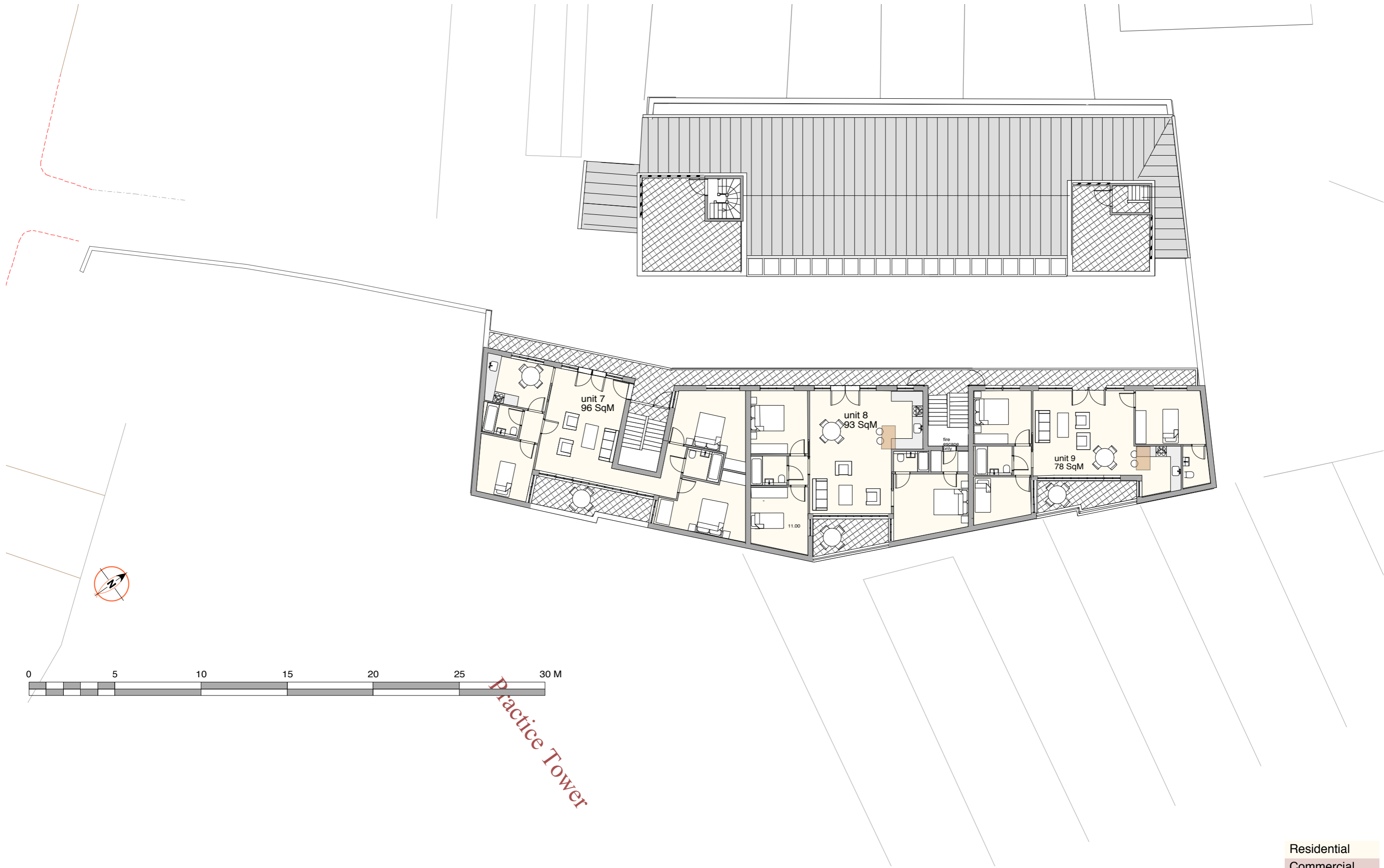






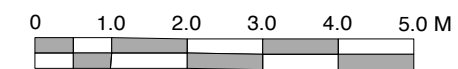
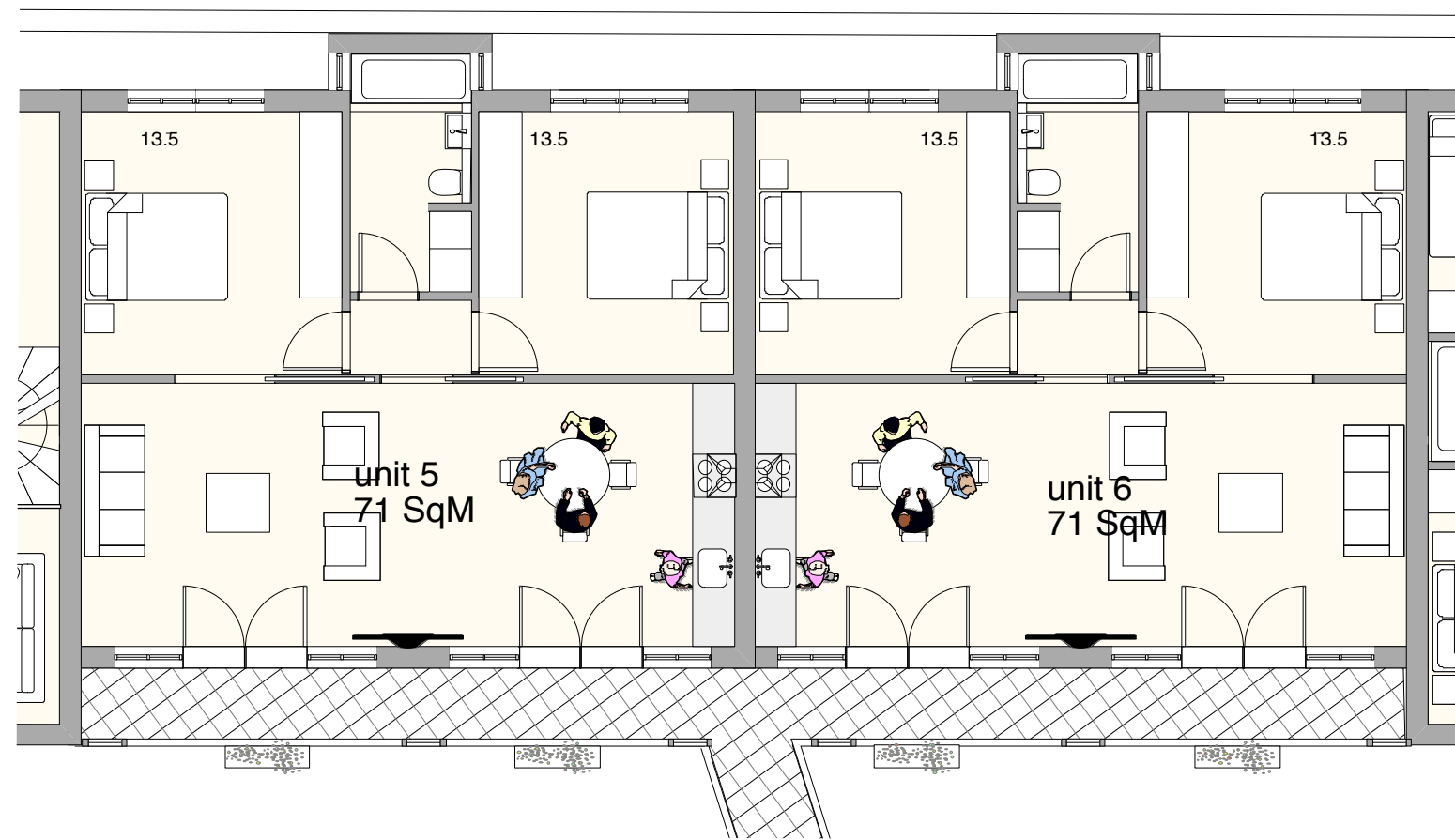
Practice Tower

Residential
Commercial

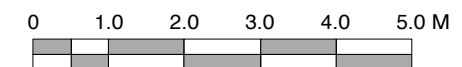
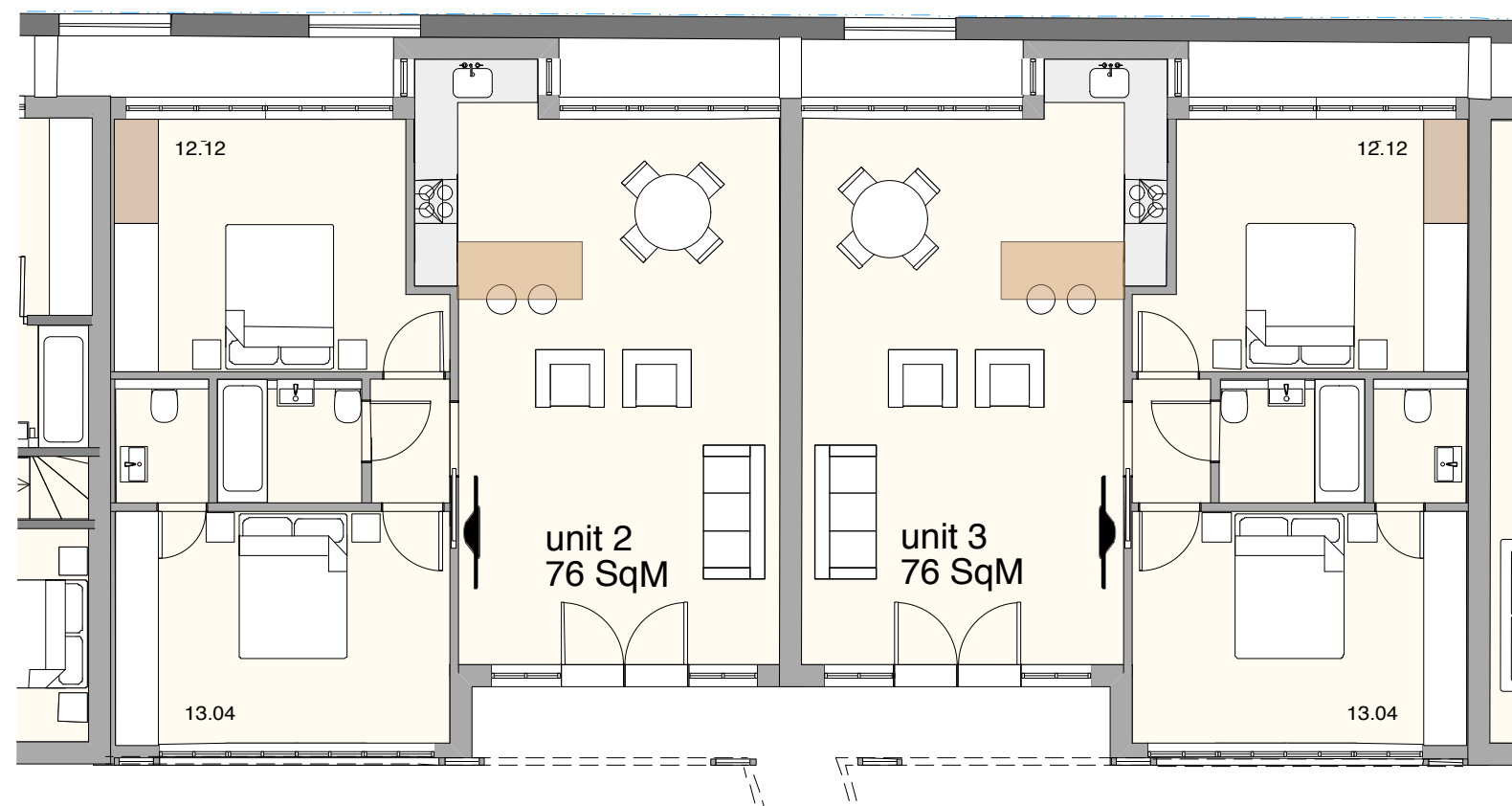




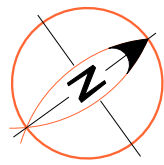
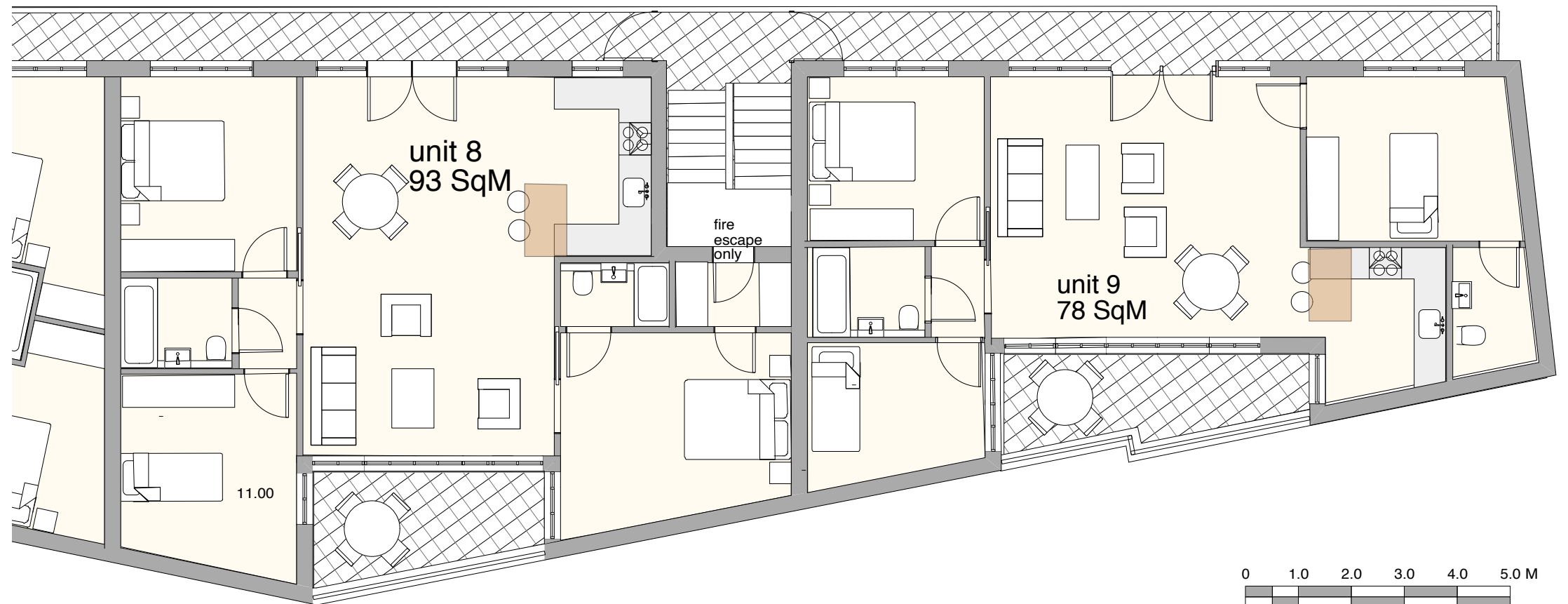
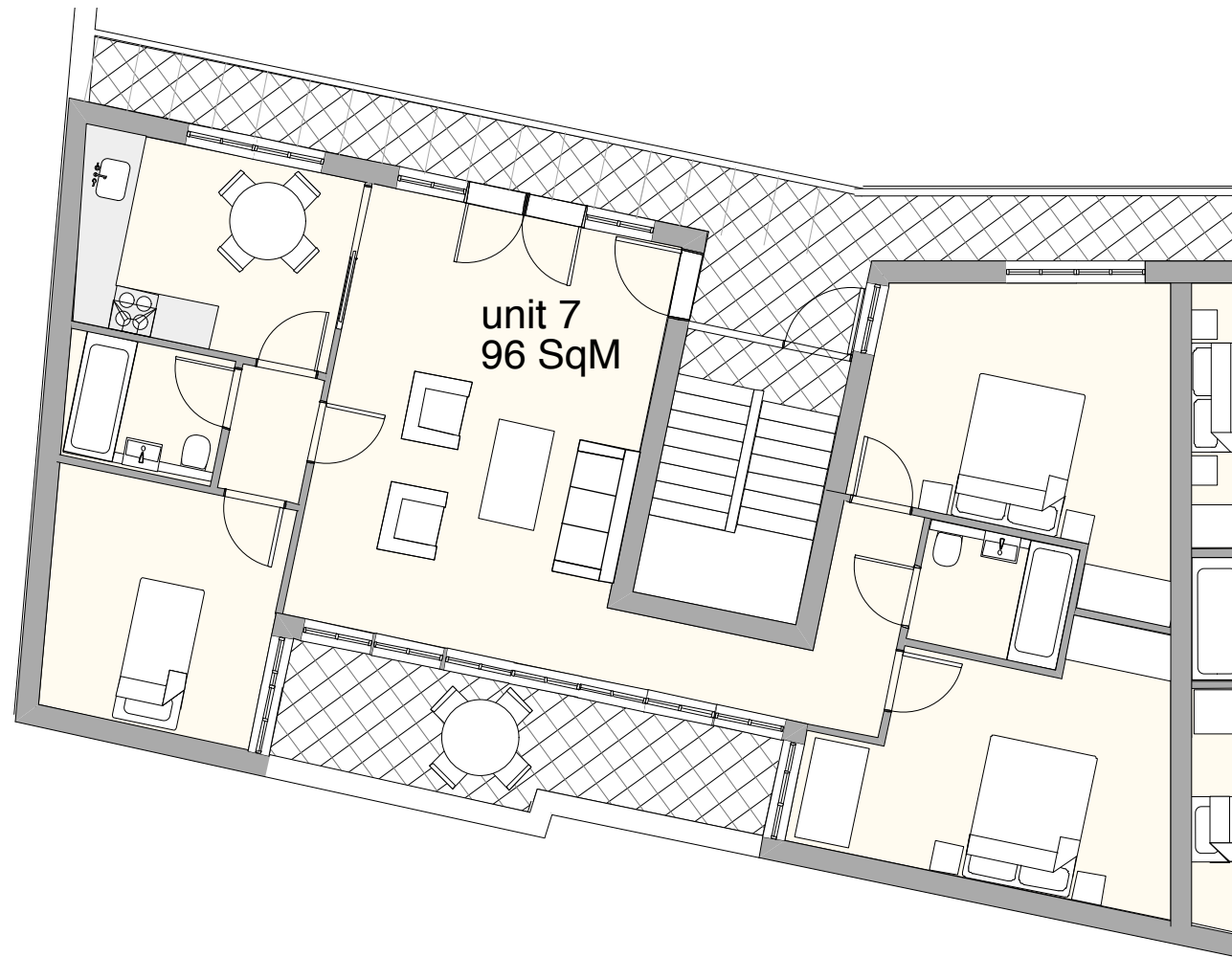
FIRST FLOOR



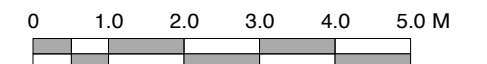
GROUND FLOOR

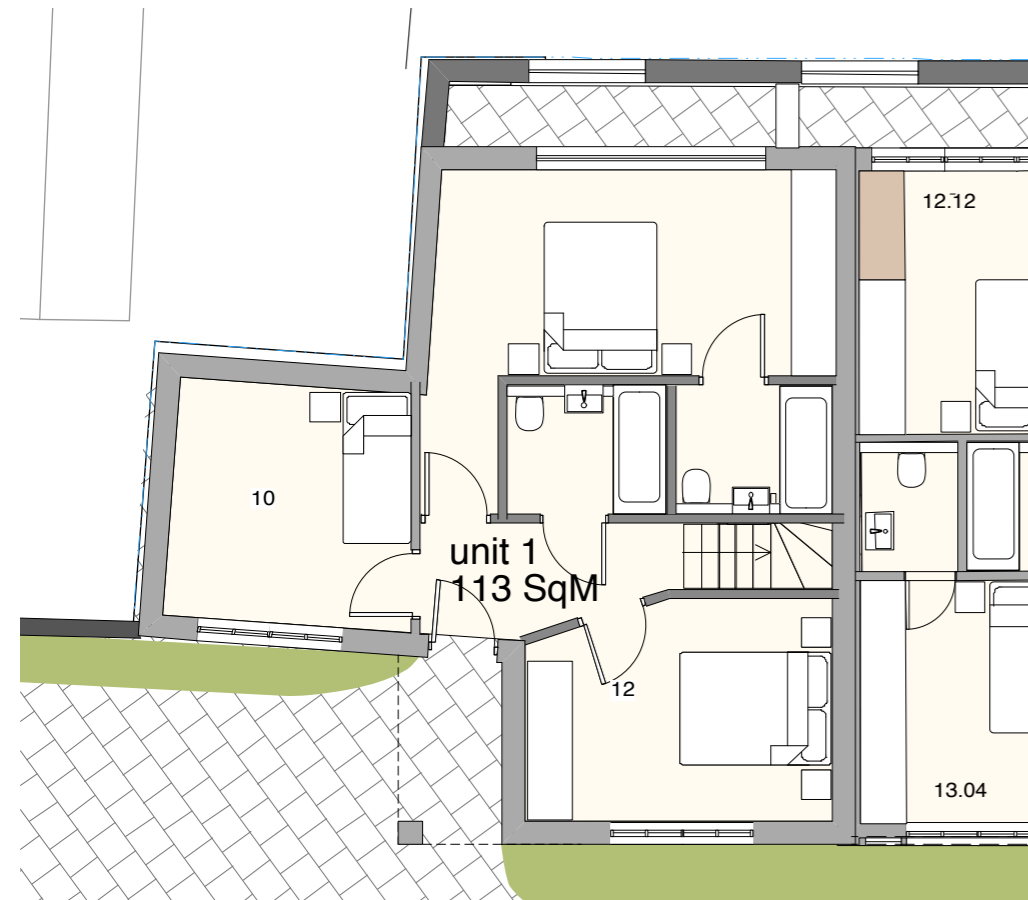


Residential
Commercial

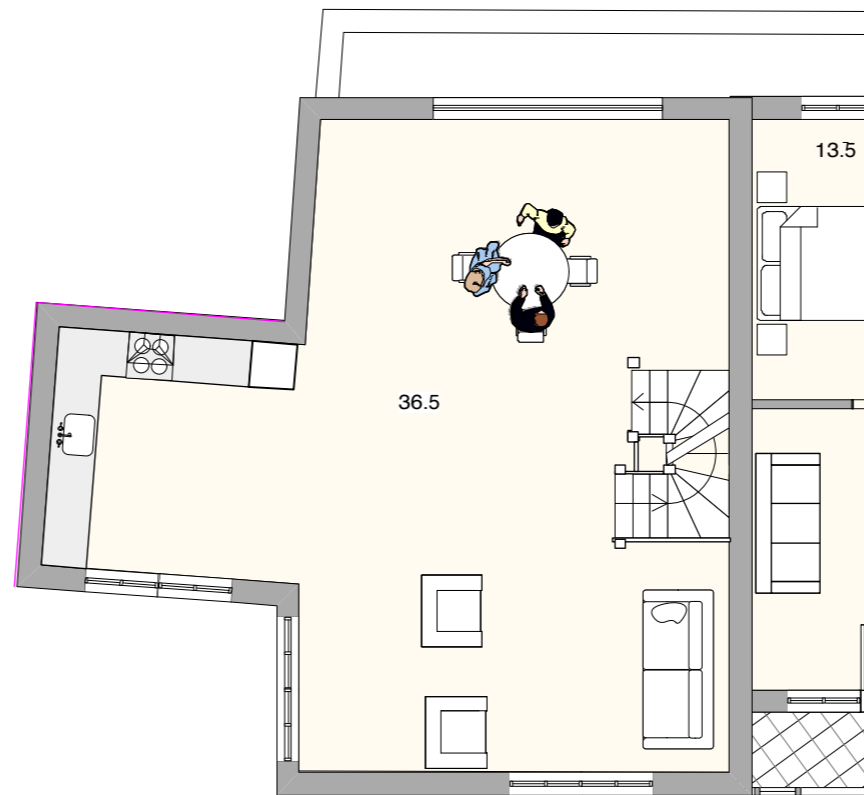


SECOND FLOOR

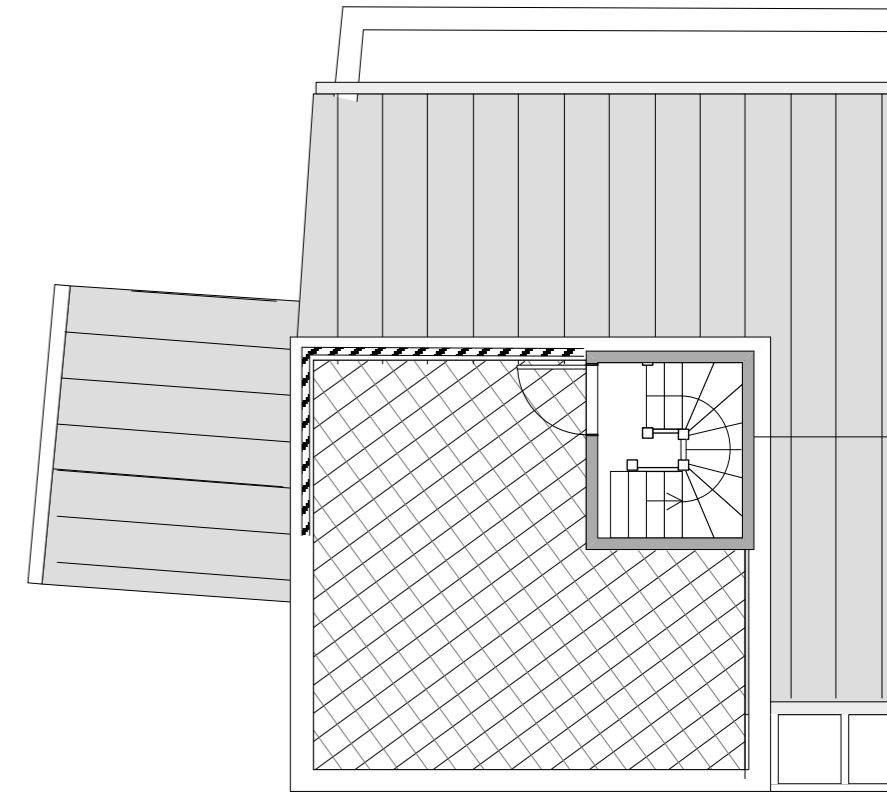




GROUND FLOOR



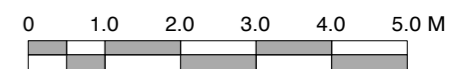
FIRST FLOOR

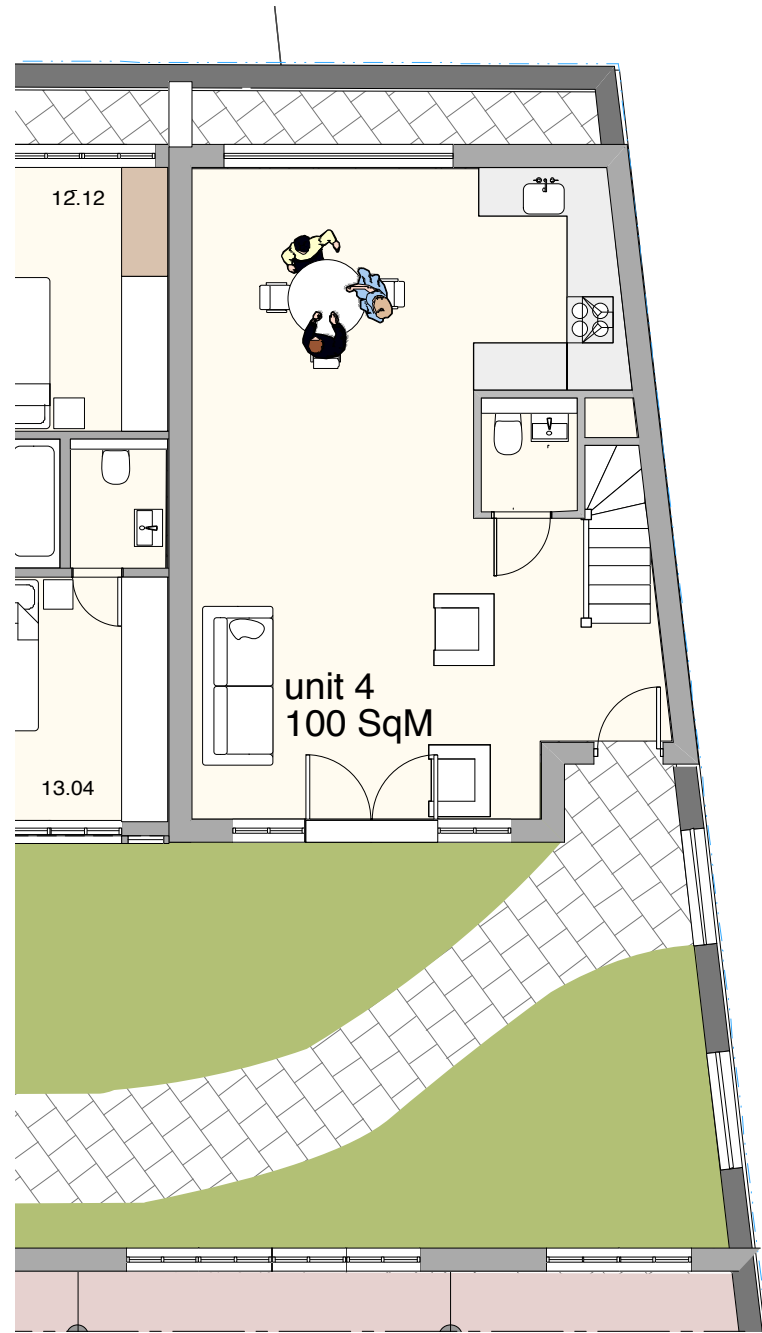


ROOF TERRACE

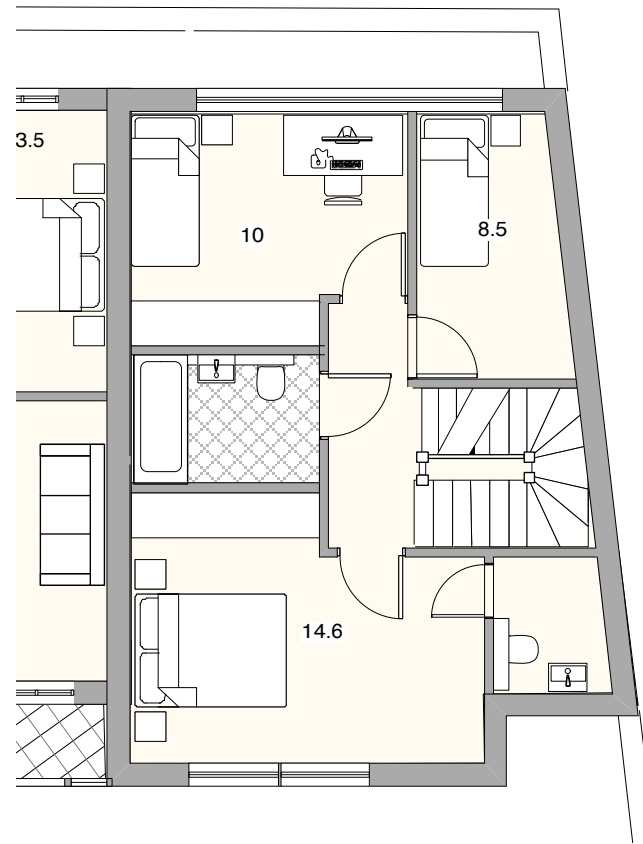


NIA 91 SqM

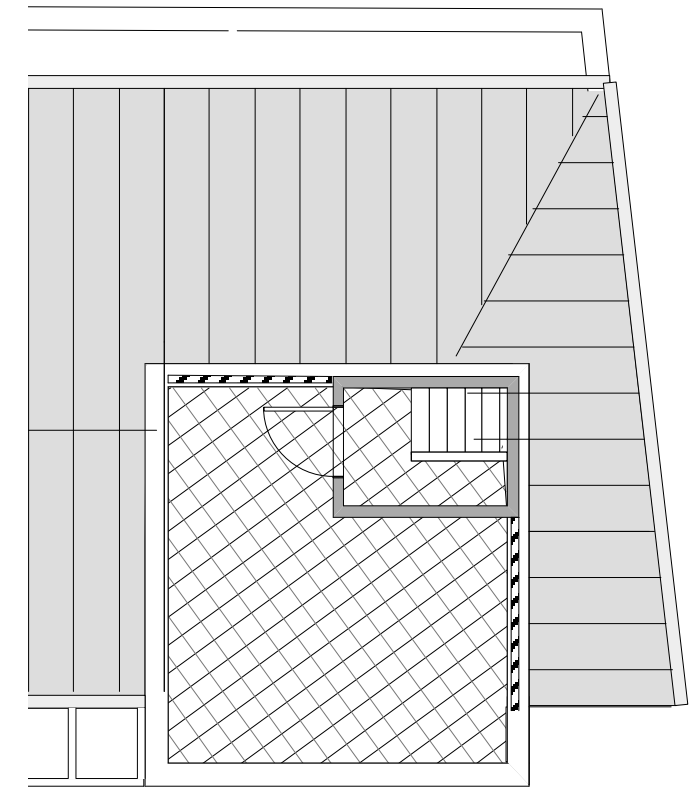




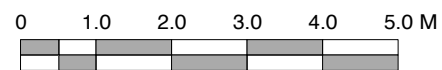
GROUND FLOOR

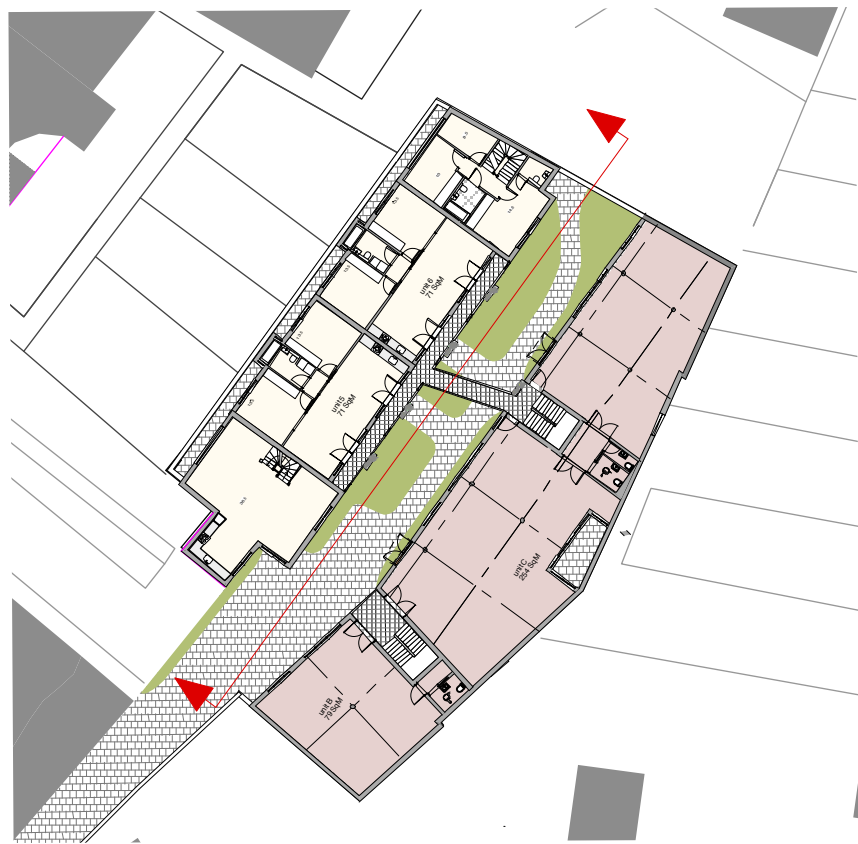


FIRST FLOOR



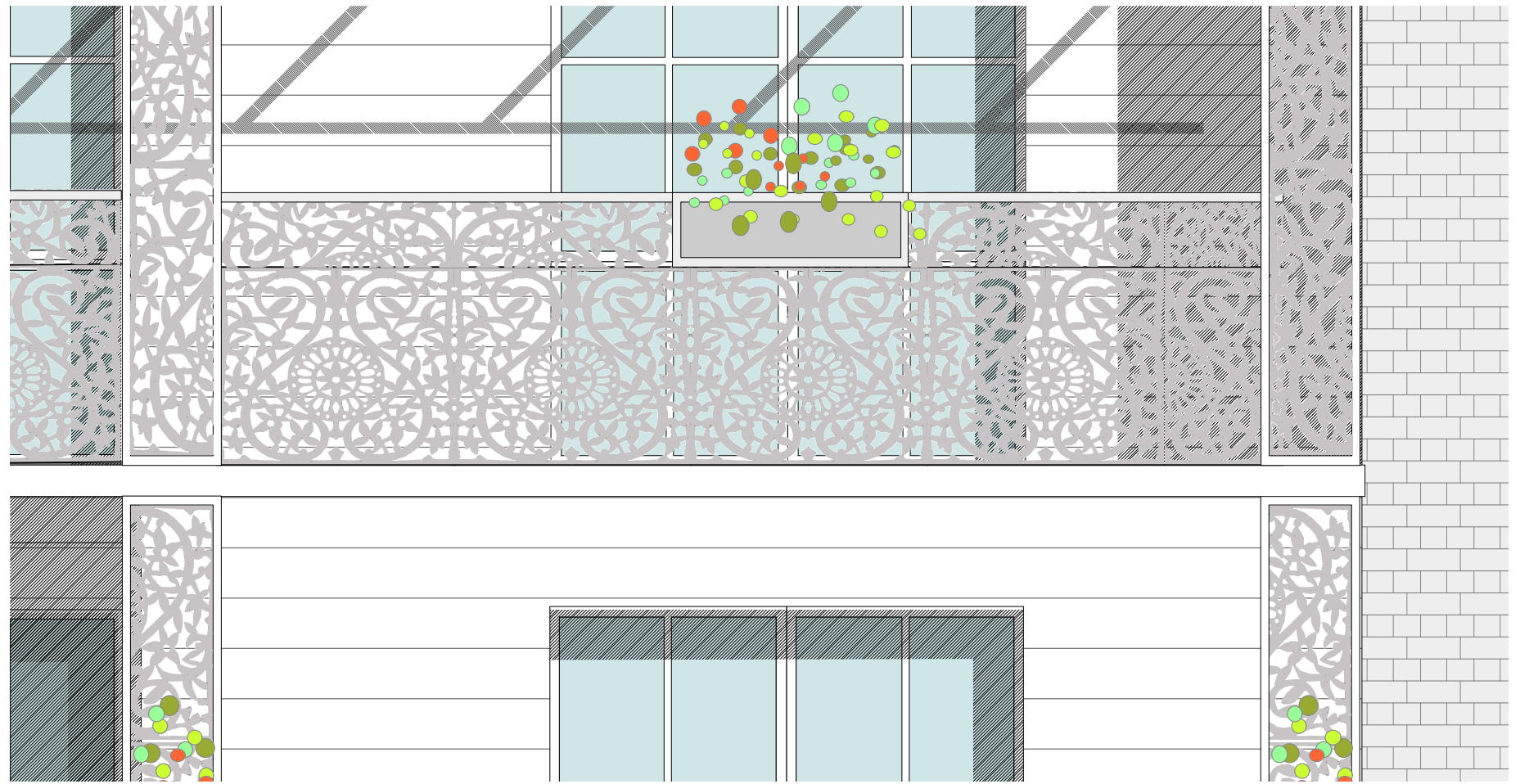
ROOF TERRACE





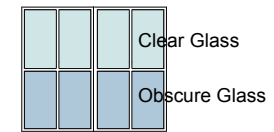
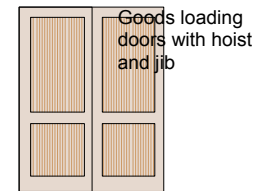
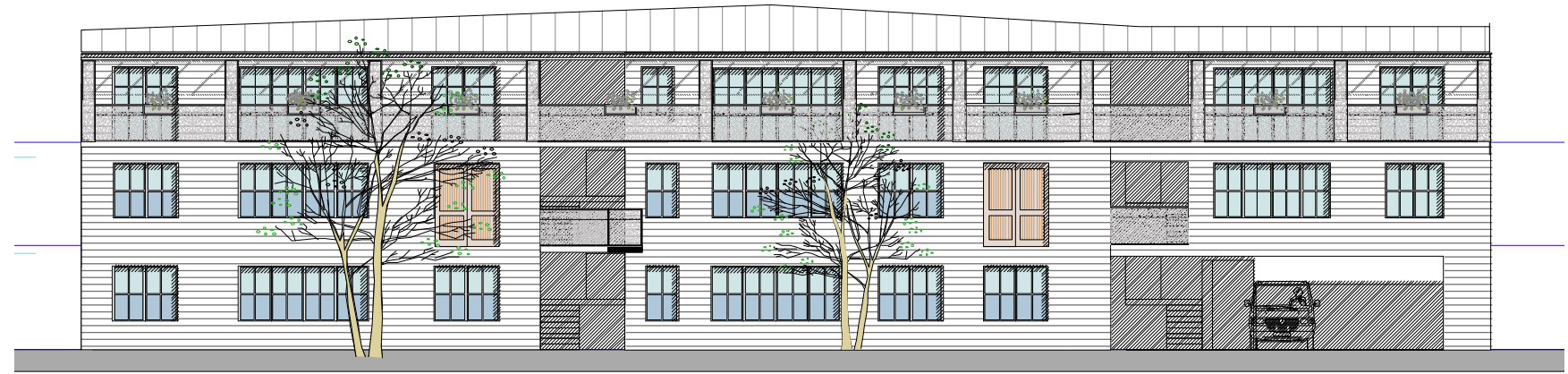
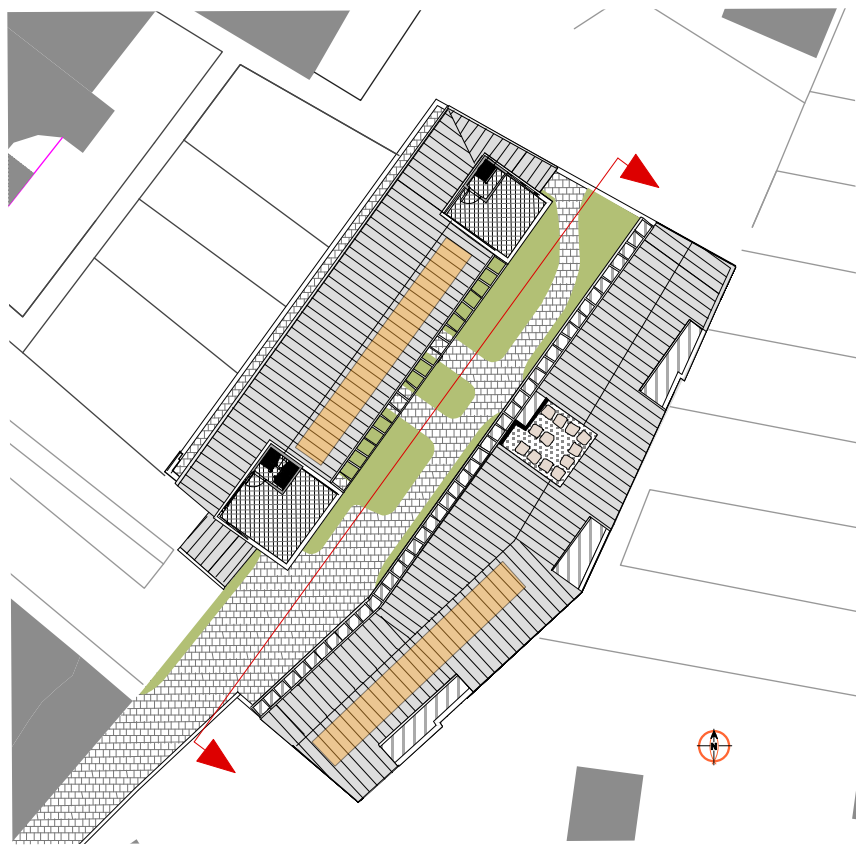
MATERIALS KEY

| | |
|--|----------------------------------|
| | Zinc roof |
| | Brick |
| | Timber boards |
| | Metal planter |
| | Metal balustrade |
| | Steel trellis |
| | Alluminium/ timber windows |



DETAIL OF ELEVATION 1:25



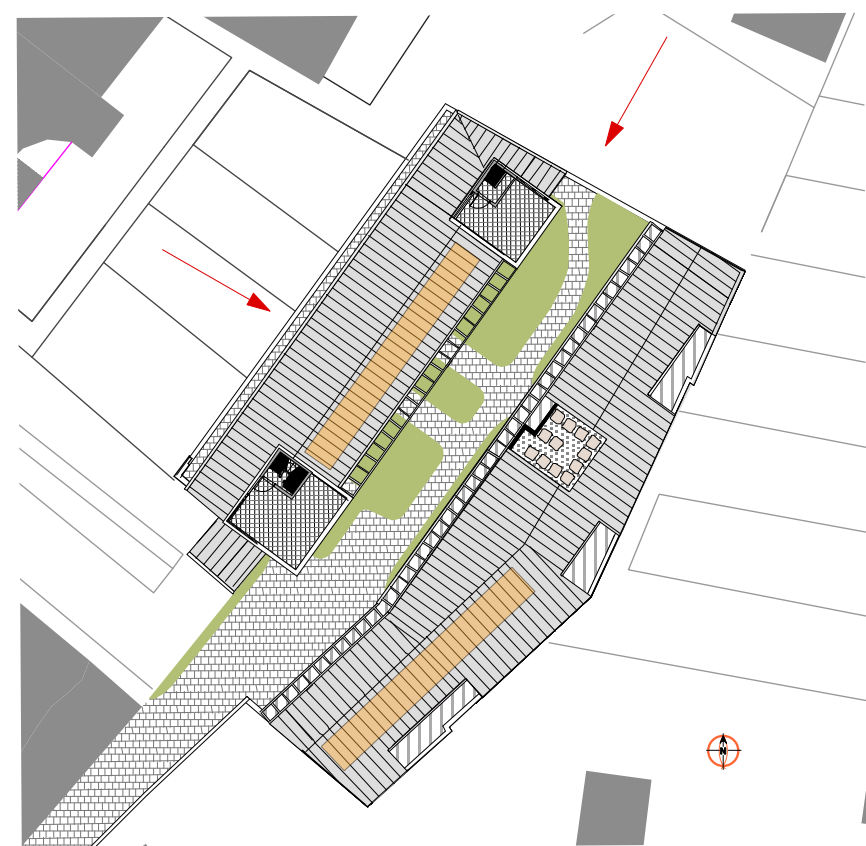


MATERIALS KEY

| | |
|--|------------------|
| | Zinc roof |
| | Brick |
| | Timber boards |
| | Metal planter |
| | Metal balustrade |
| | Steel trellis |

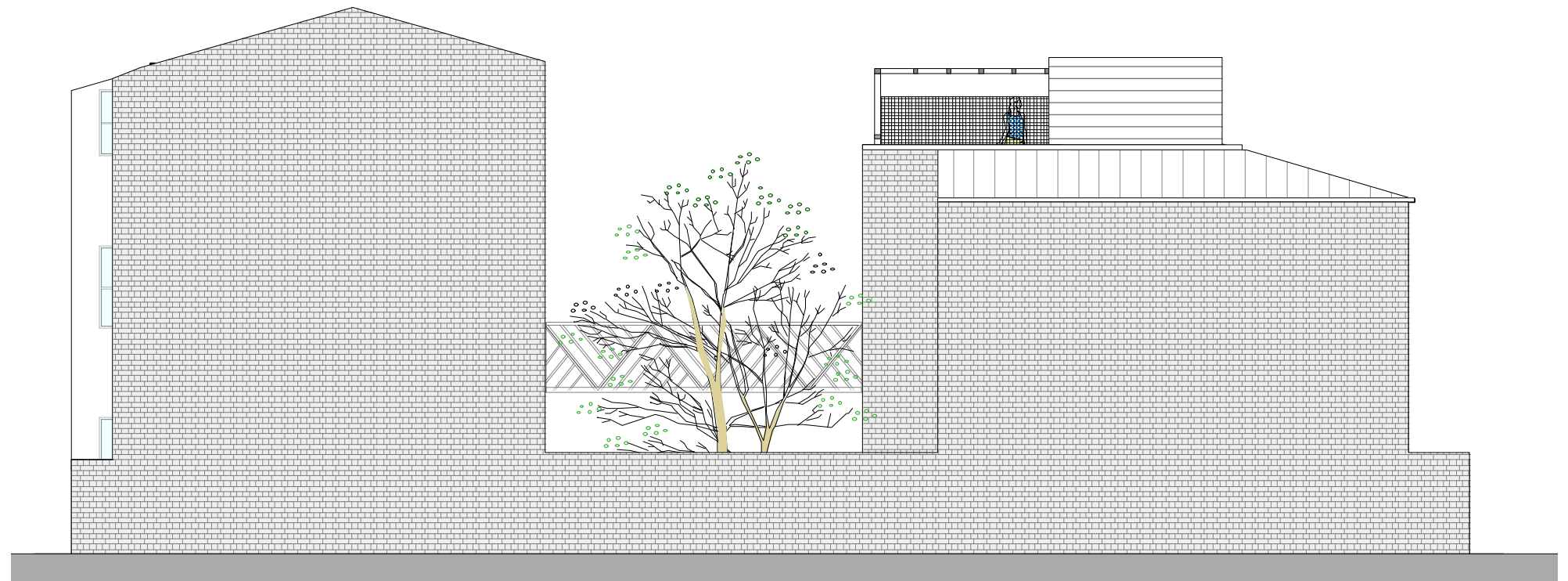


0 2 4 6 8 10 M

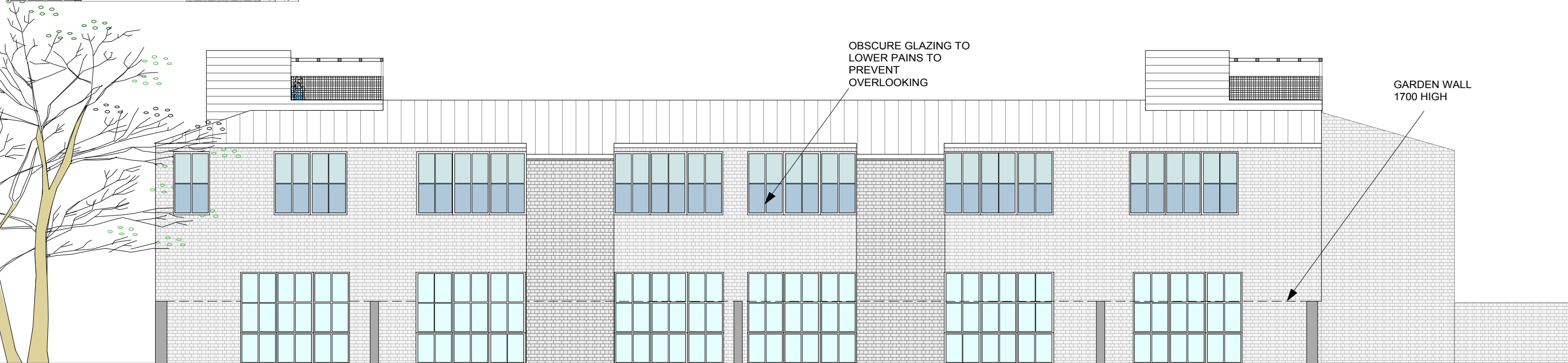
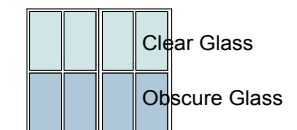


MATERIALS KEY

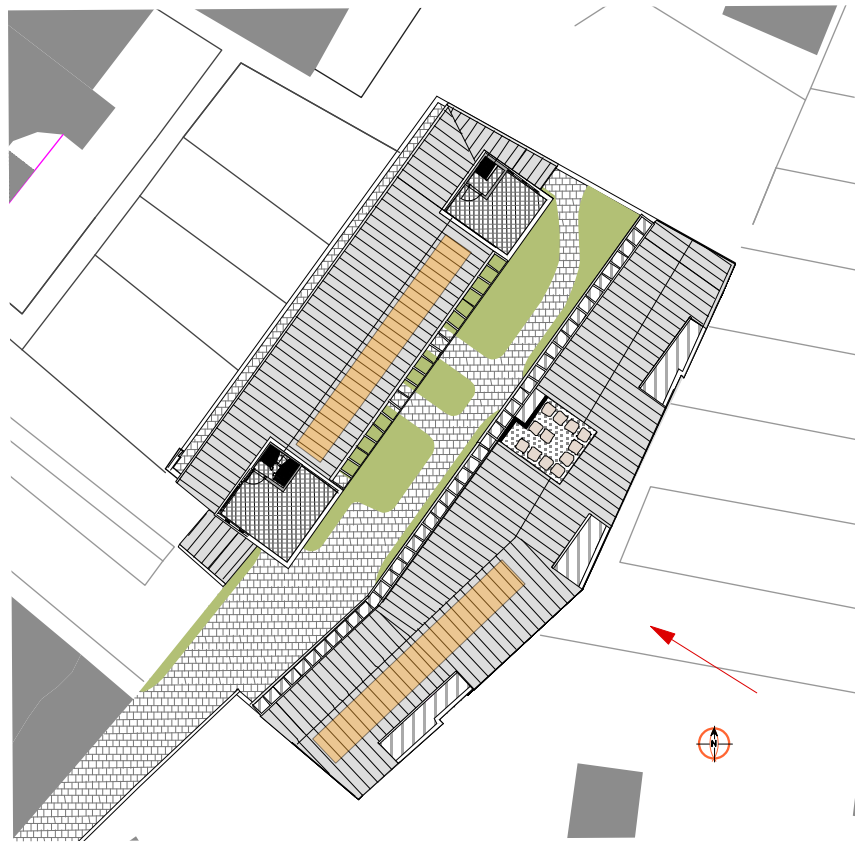
| | |
|--|--------------------------|
| | Zinc roof |
| | Aluminium/timber windows |
| | Brick |
| | Timber boards |
| | Metal planter |
| | Metal balustrade |
| | Steel trellis |



NE ELEVATION



NW ELEVATION



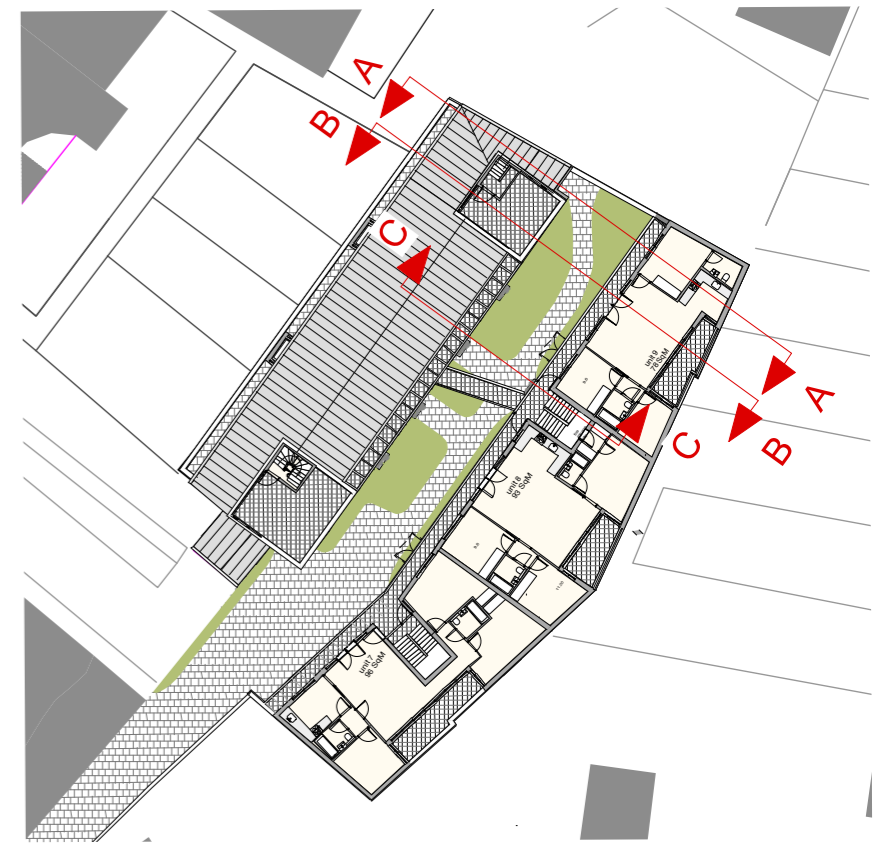
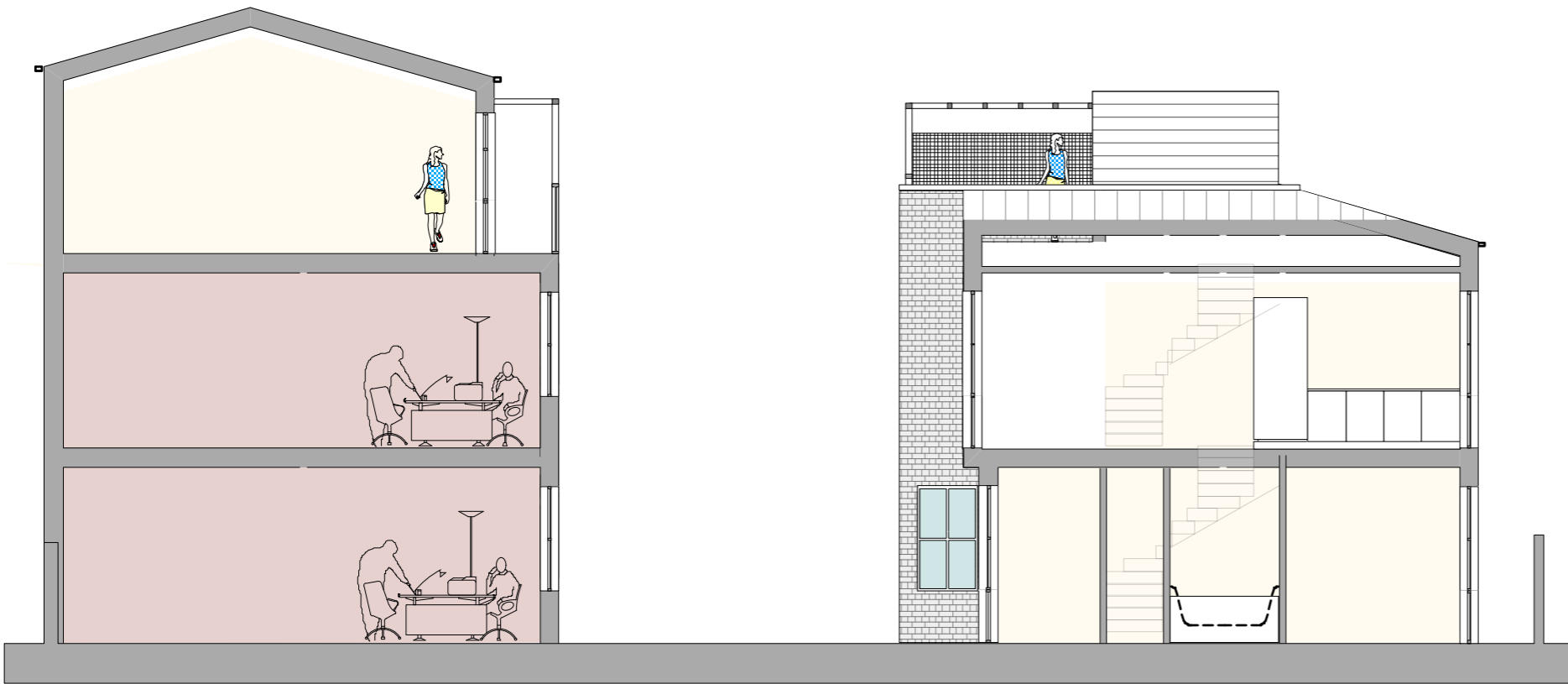
| |
|---------------|
| Zinc roof |
| Timber boards |
| Brick |

OBSCURE GLASS SCREEN TO
1650 ABOVE FLOOR LEVEL

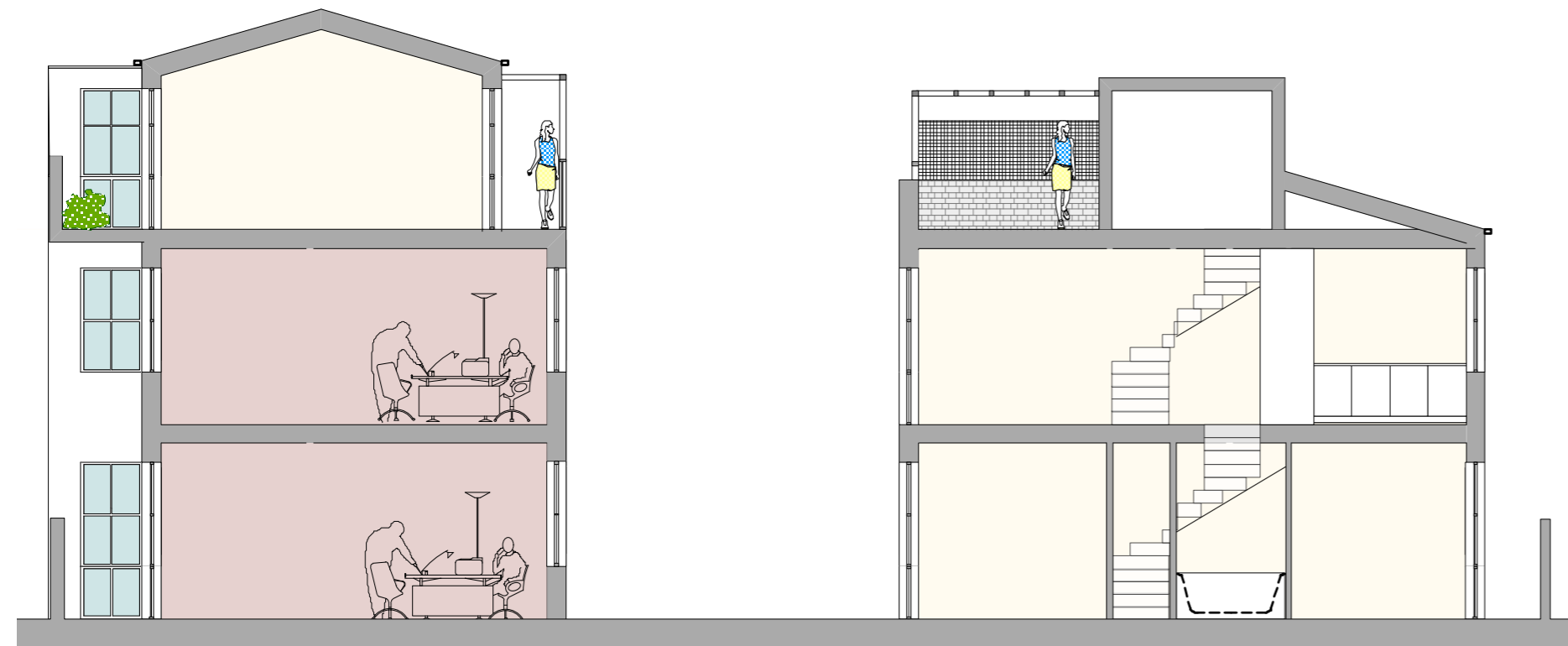


OBSCURE GLASS

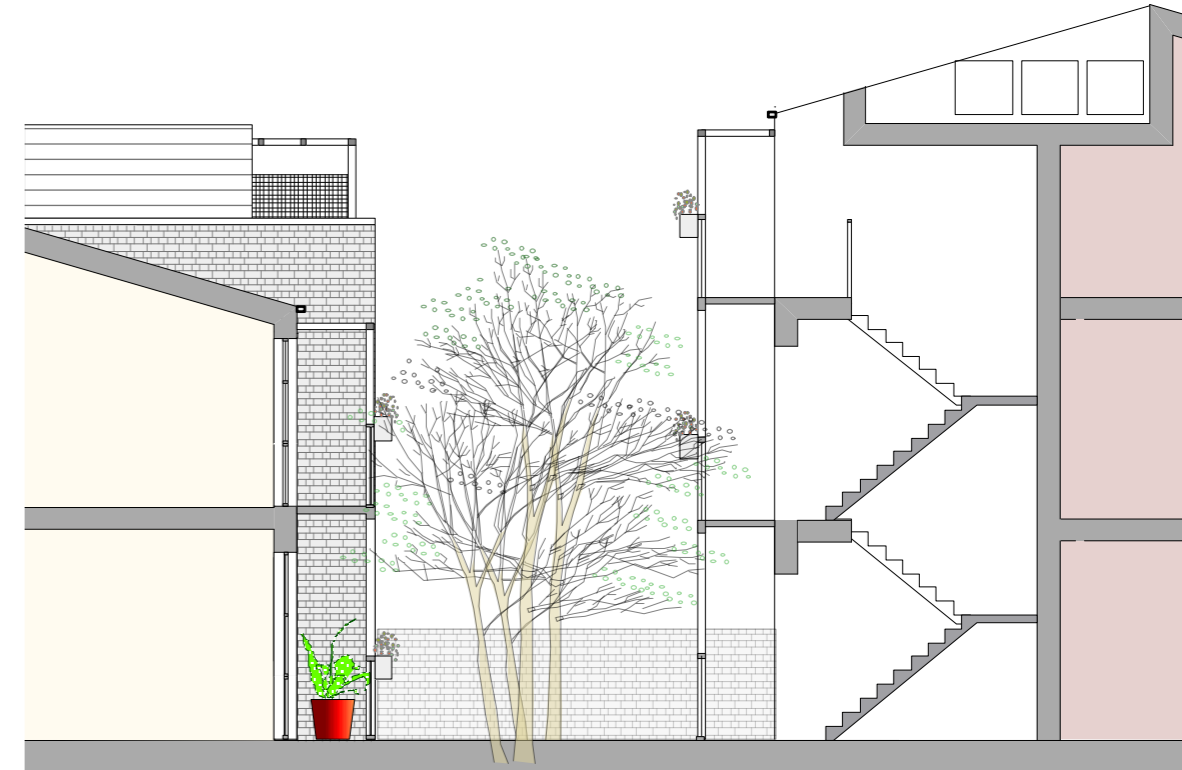
GLASS BRICKS IN EXISTING OPENINGS



A

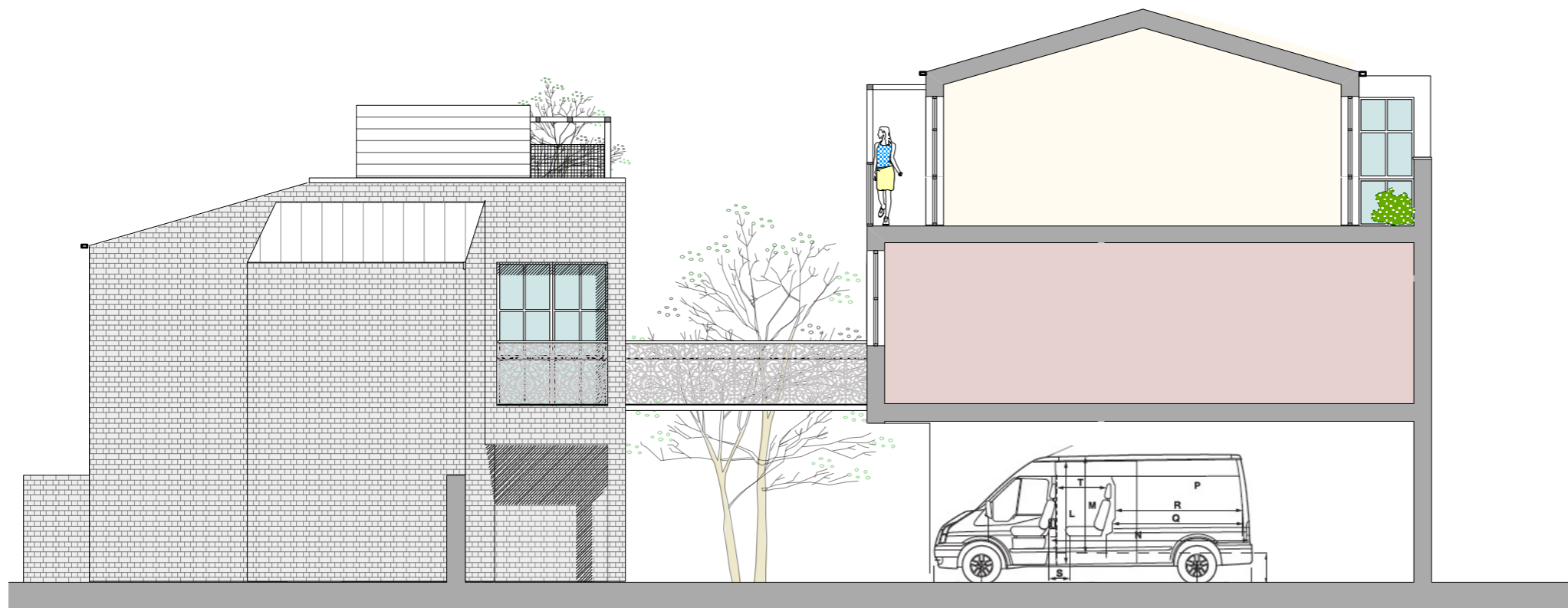


B

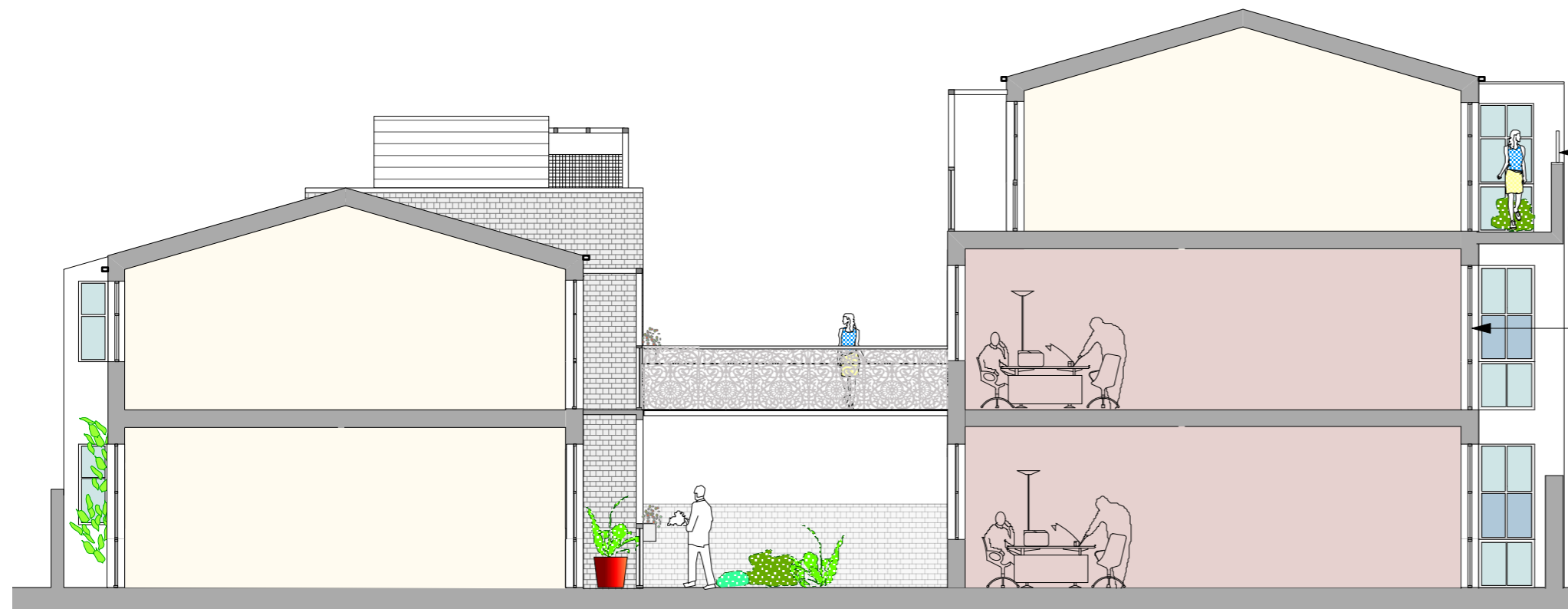
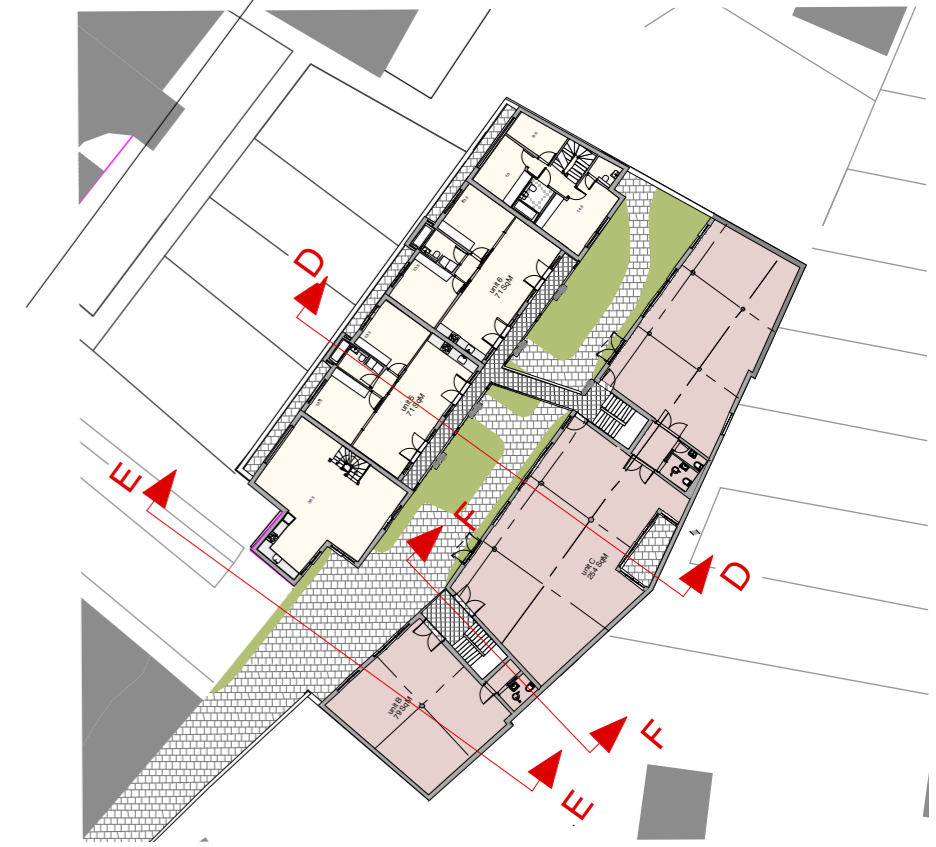


C

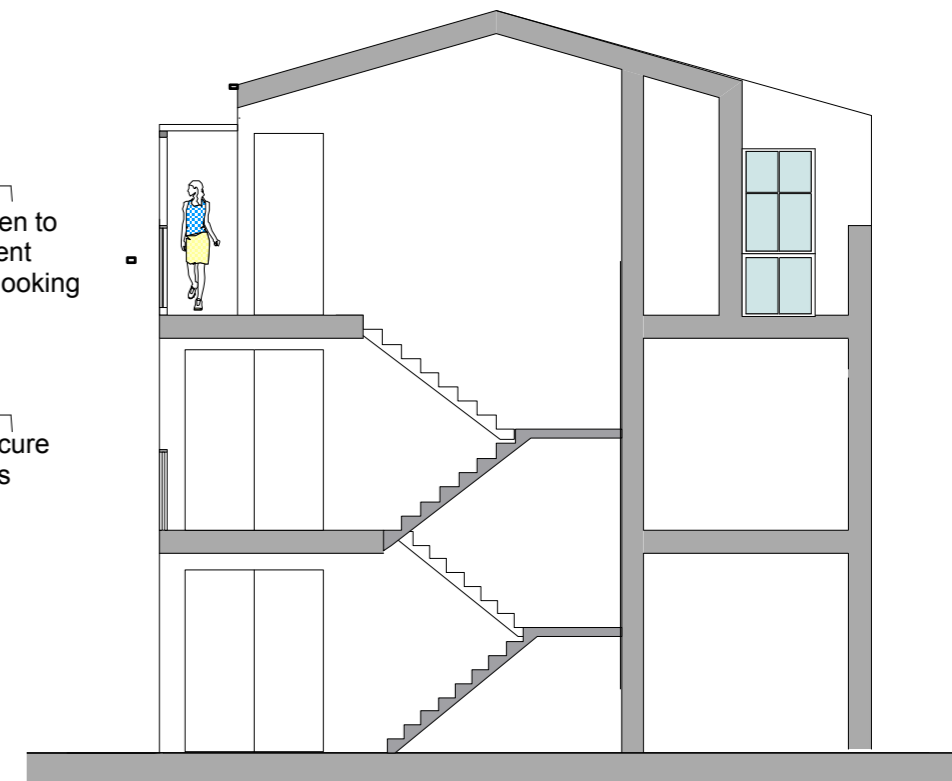
Residential
Commercial



E



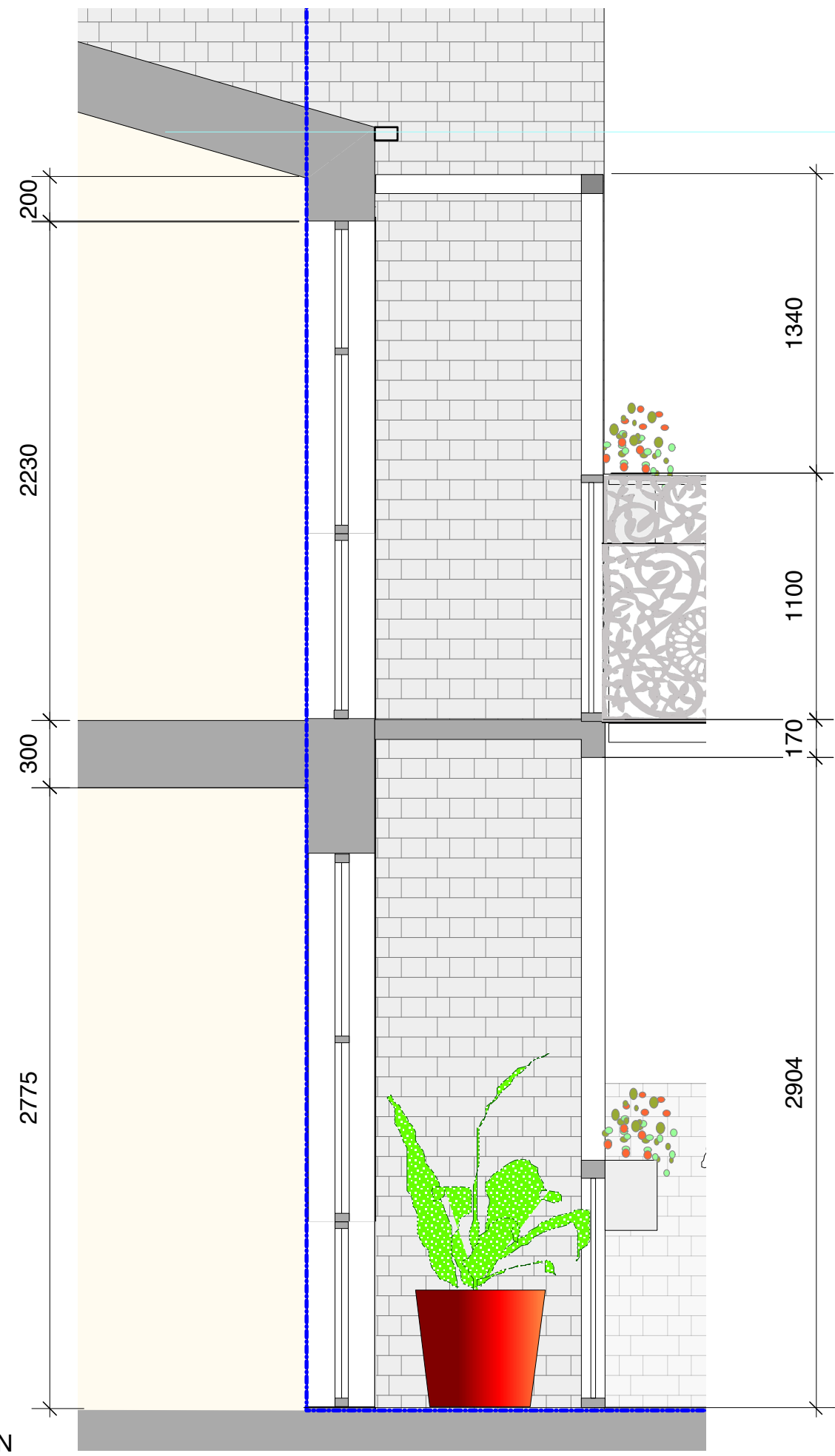
D



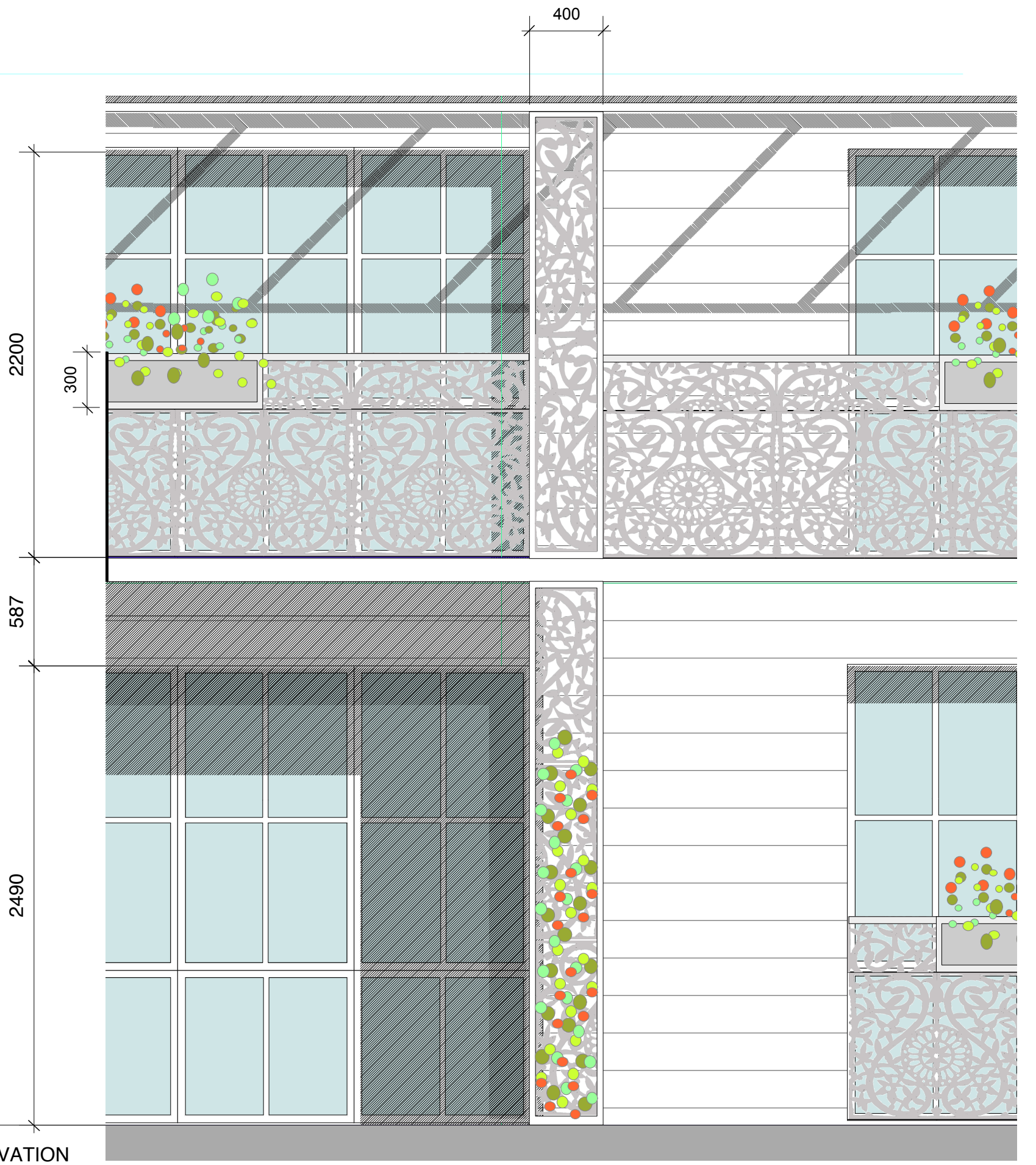
F

Residential
Commercial

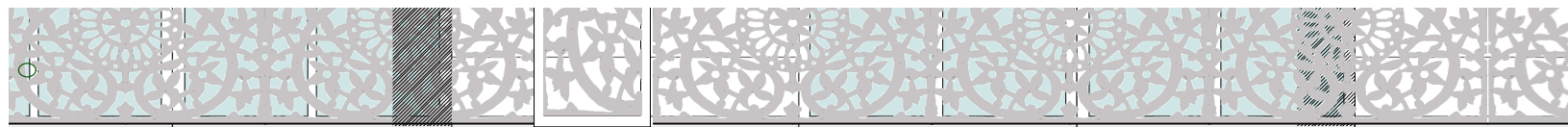
PLAN



ELEVATION

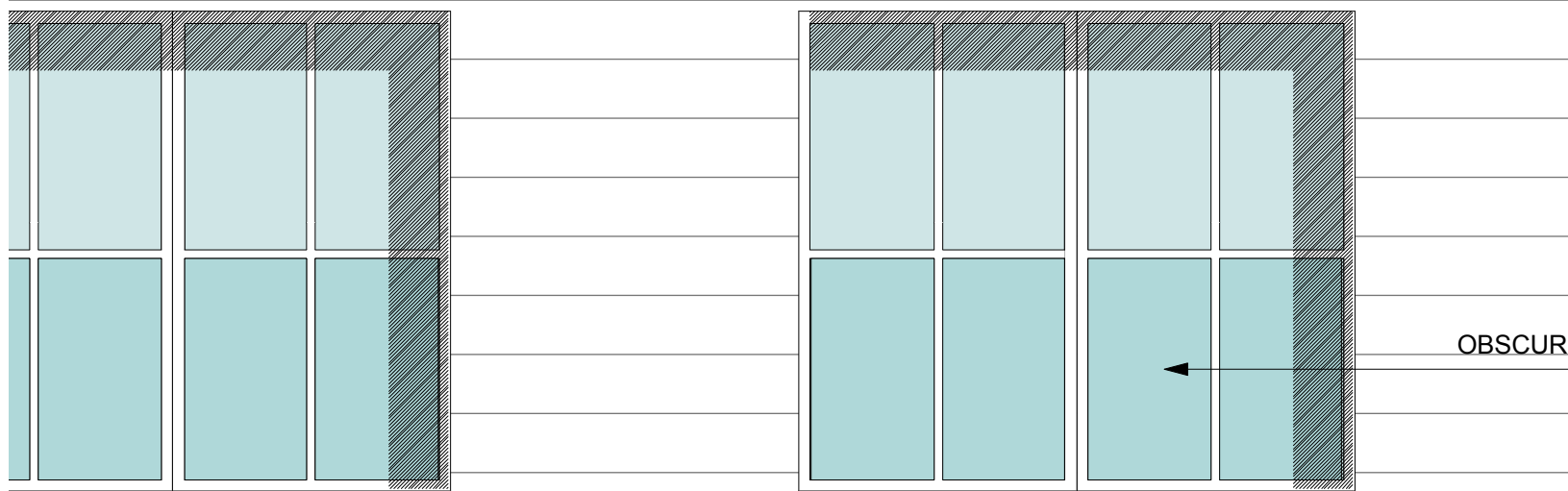


SECTION

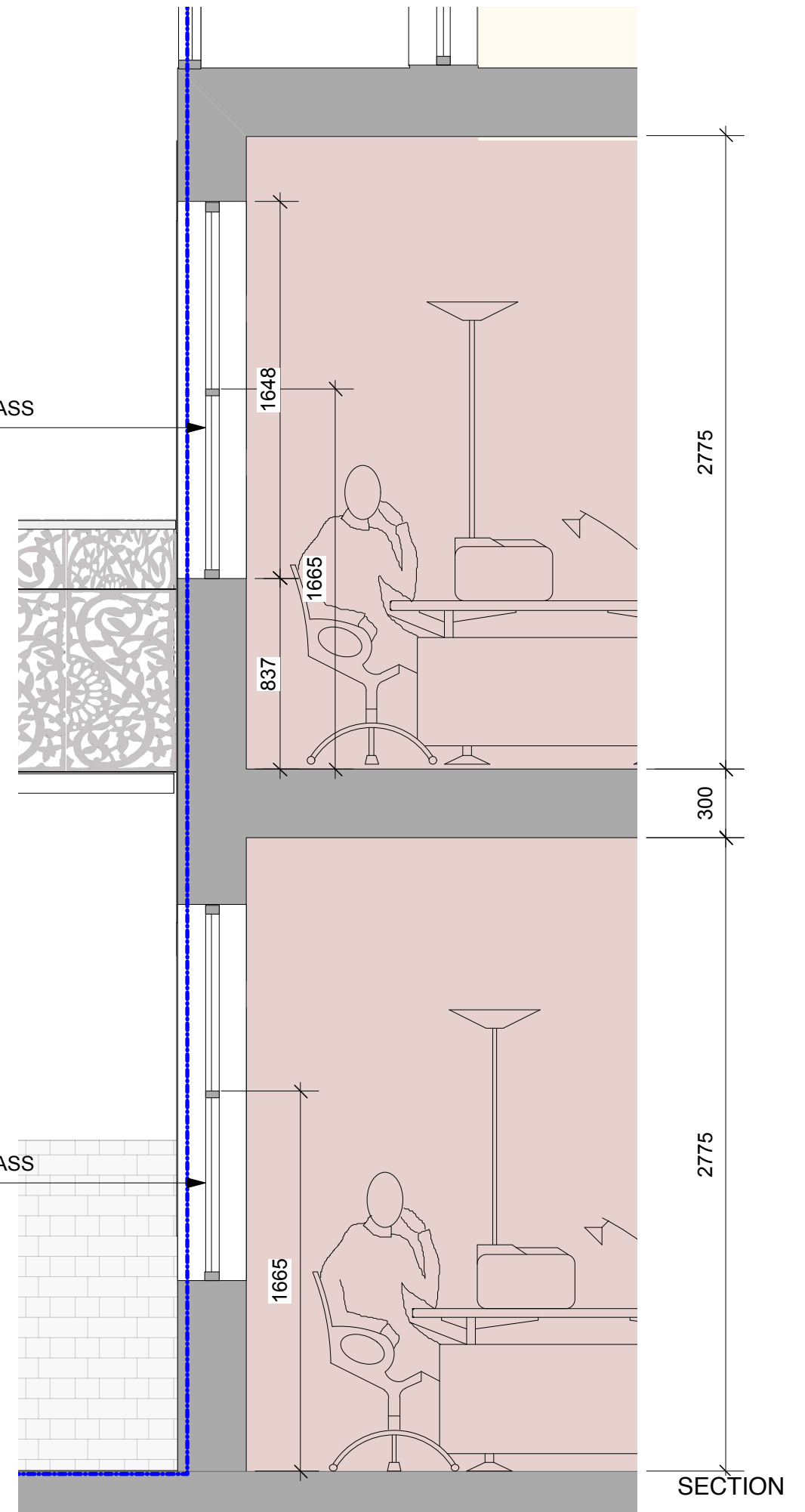
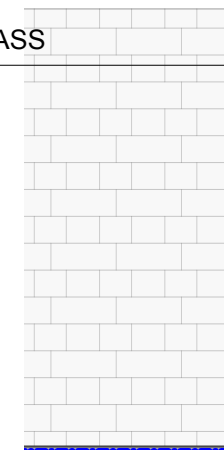
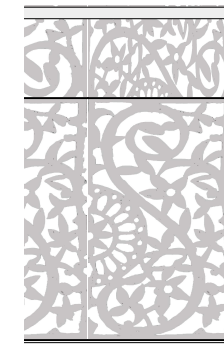


OBSCURE GLASS

GOODS LOADING DOORS WITH HOIST AND JIB



OBSCURE GLASS



2775

300

2775

ELEVATION

SECTION