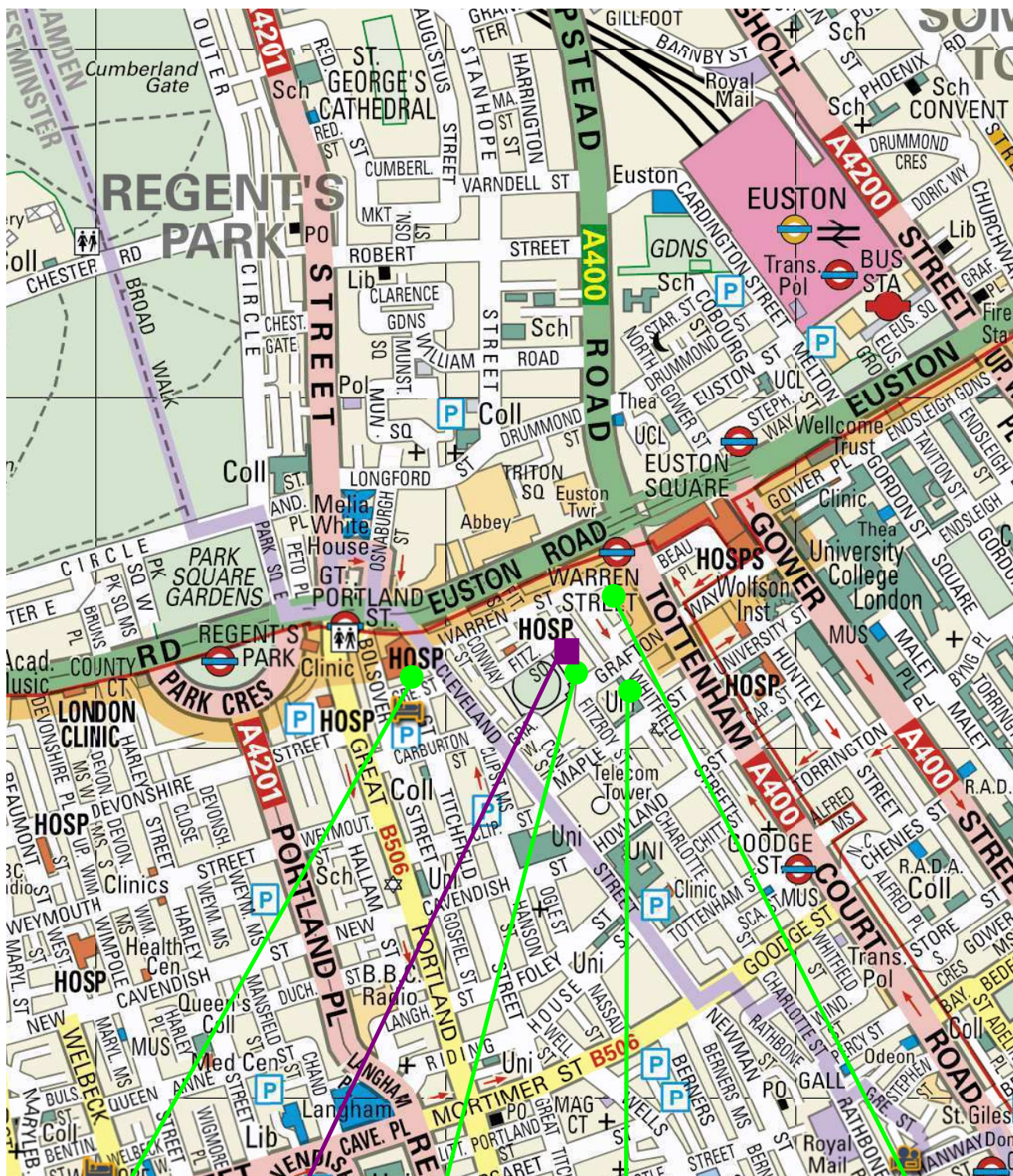




BROOKS / MURRAY

ARCHITECTS
8-10 NEW NORTH PLACE
LONDON EC2A 4JA
TEL 020 7739 9955
FAX 020 7739 9944
architects@brooksmurray.com

CLIENT:	Fitzrovia Properties
JOB:	7 Fitzroy Square
DATE:	OCT 2011
SCALE:	1:50 @ A1ex
DRAWING TITLE:	Proposed Section A-A
DRAWING NUMBER:	919 - P008



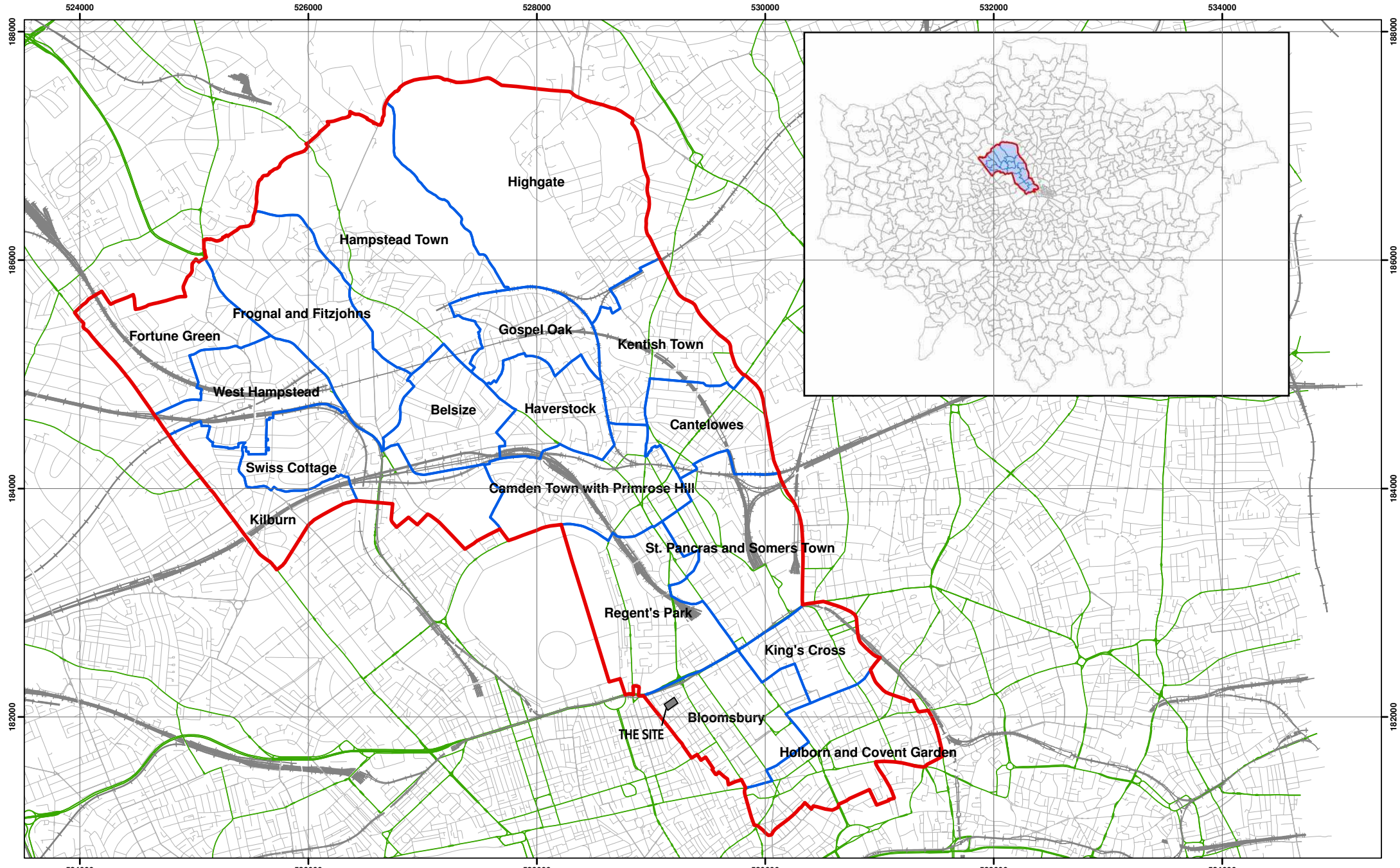
Buckingham Street

THE SITE

Fitzroy Street

Hertford Place

Whitfield Street

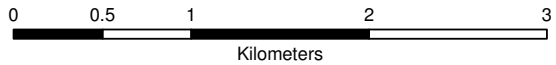


Scale at A3: 1:30,000

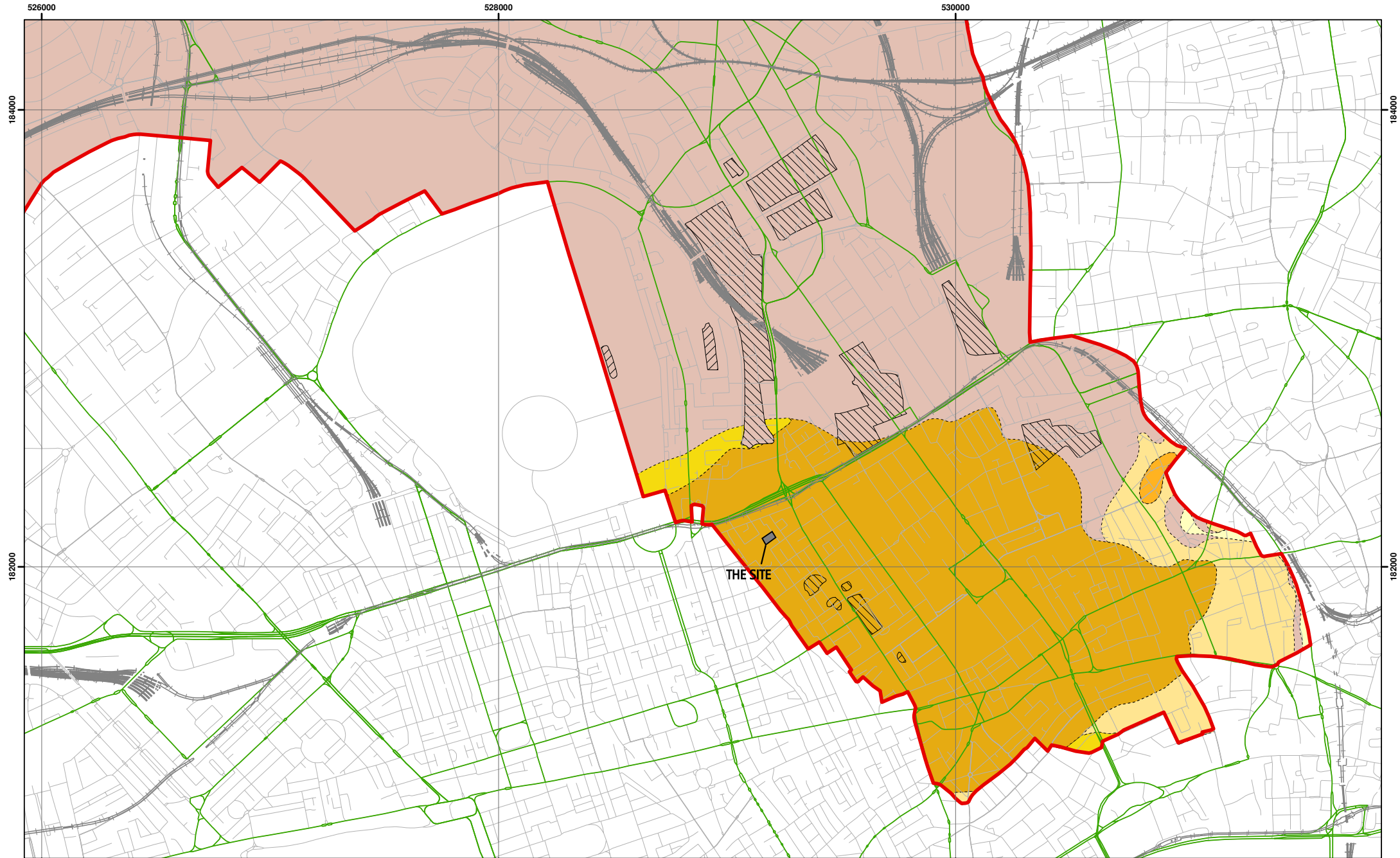
Coordinate System:
British National Grid
GCS_OSGB_1936

Legend

- ▬ London Borough of Camden
- ▬ Camden Wards
- ▬ Railway Lines
- ▬ A Roads



**Camden Geological, Hydrogeological
and Hydrological Study**
Camden Administrative Boundaries



Data source: BGS Mapping - Scale 1:10,000



Scale at A3: 1:15,000

Coordinate System:
British National Grid
GCS_OSGB_1936



Legend

- London Borough of Camden
- Railway Lines
- A Roads

- MADE GROUND
- WORKED GROUND

- BGS 1:10K Artificial Ground**
- BGS 1:10K Drift Geology**
- ALLUVIUM
- HACKNEY GRAVEL FORMATION
- LANGLEY SILT FORMATION
- LYNCH HILL GRAVEL FORMATION
- STANMORE GRAVEL FORMATION

- BGS 1:10K Solid Geology**
- BAGSHOT FORMATION
- CLAYGATE MEMBER
- LAMBETH GROUP
- LONDON CLAY FORMATION

Camden Geological, Hydrogeological and Hydrological Study

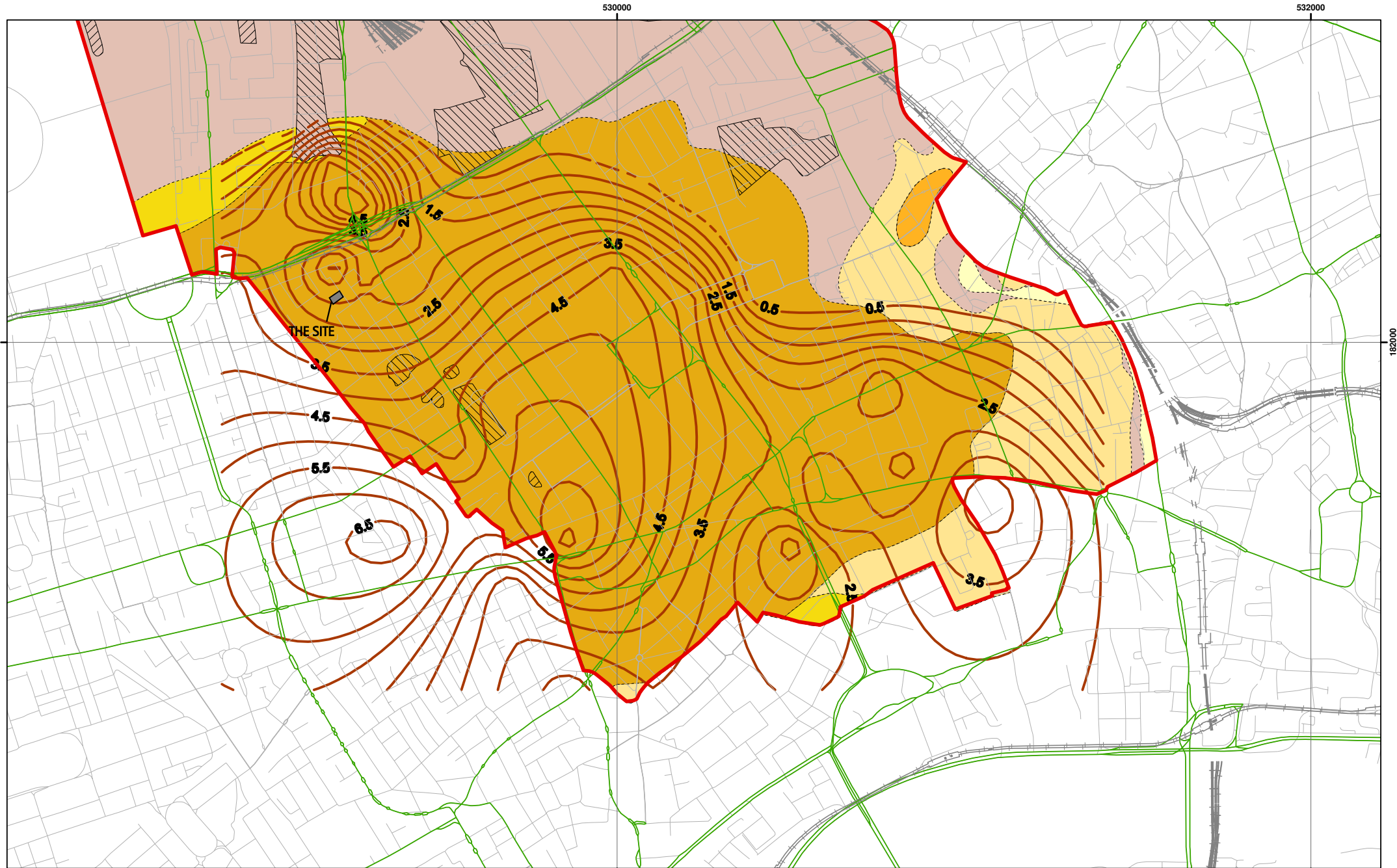
South Camden Geological Map

Report: G7180

Site: 7 Fitzroy Square/11 Grafton Mews

Figure: 5

NB. Geological boundaries are largely indicative based on available geological mapping



Data source: BGS Mapping - Scale 1:10,000



Scale at A3: 1:10,000

Coordinate System:
British National Grid
GCS_OSGB_1936



Legend

- | | | | |
|---|---|---|---|
| — London Borough of Camden | — RTD Thickness Contours | BGS 1:10K Drift Geology | BGS 1:10K Solid Geology |
| — Railway Lines | BGS 1:10K Artificial Ground | ALLUVIUM | BAGSHOT FORMATION |
| — A Roads | MADE GROUND | HACKNEY GRAVEL FORMATION | CLAYGATE MEMBER |
| | WORKED GROUND | LANGLEY SILT FORMATION | LAMBETH GROUP |
| | | LYNCH HILL GRAVEL FORMATION | LONDON CLAY FORMATION |
| | | STANMORE GRAVEL FORMATION | |

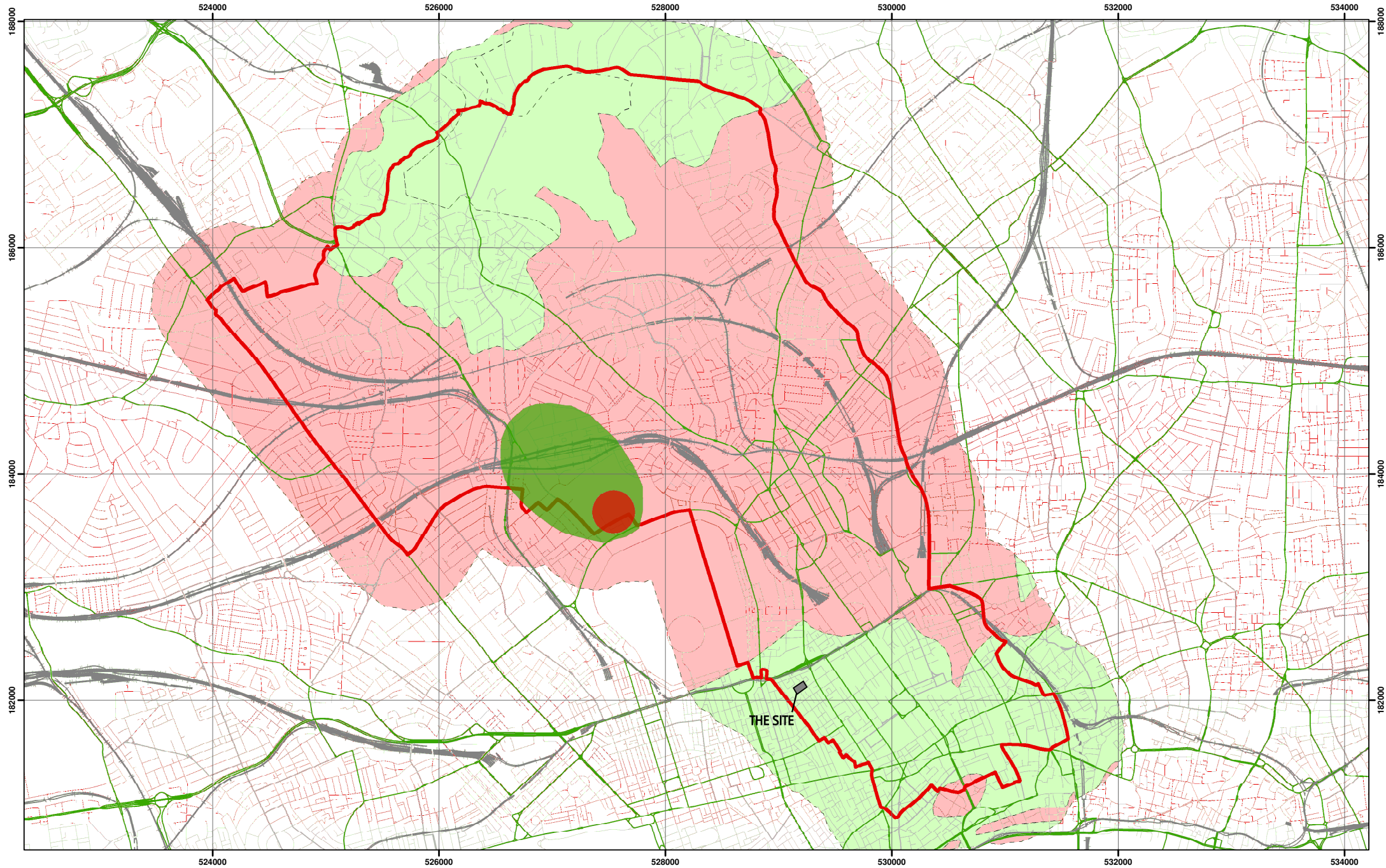
Camden Geological, Hydrogeological and Hydrological Study

River Terrace Deposit Thickness Contours

NB. Geological boundaries are largely indicative based on available geological mapping Report: G7180

Site: 7 Fitzroy Square/11 Grafton Mews

Figure: 6



Environment Agency Aquifer Designation based on BGS Mapping



Scale at A3: 1:30,000

Coordinate System:
British National Grid
GCS_OSGB_1936

Legend

 Borough of Camden	Aquifer Designation	Source Protection Zone
— Railway Lines	 Secondary A Aquifer	 Outer Source Protection Zone
— A Roads	 Unproductive Strata	 Inner Source Protection Zone

NB. Aquifer boundaries are indicative based on available geological mapping data

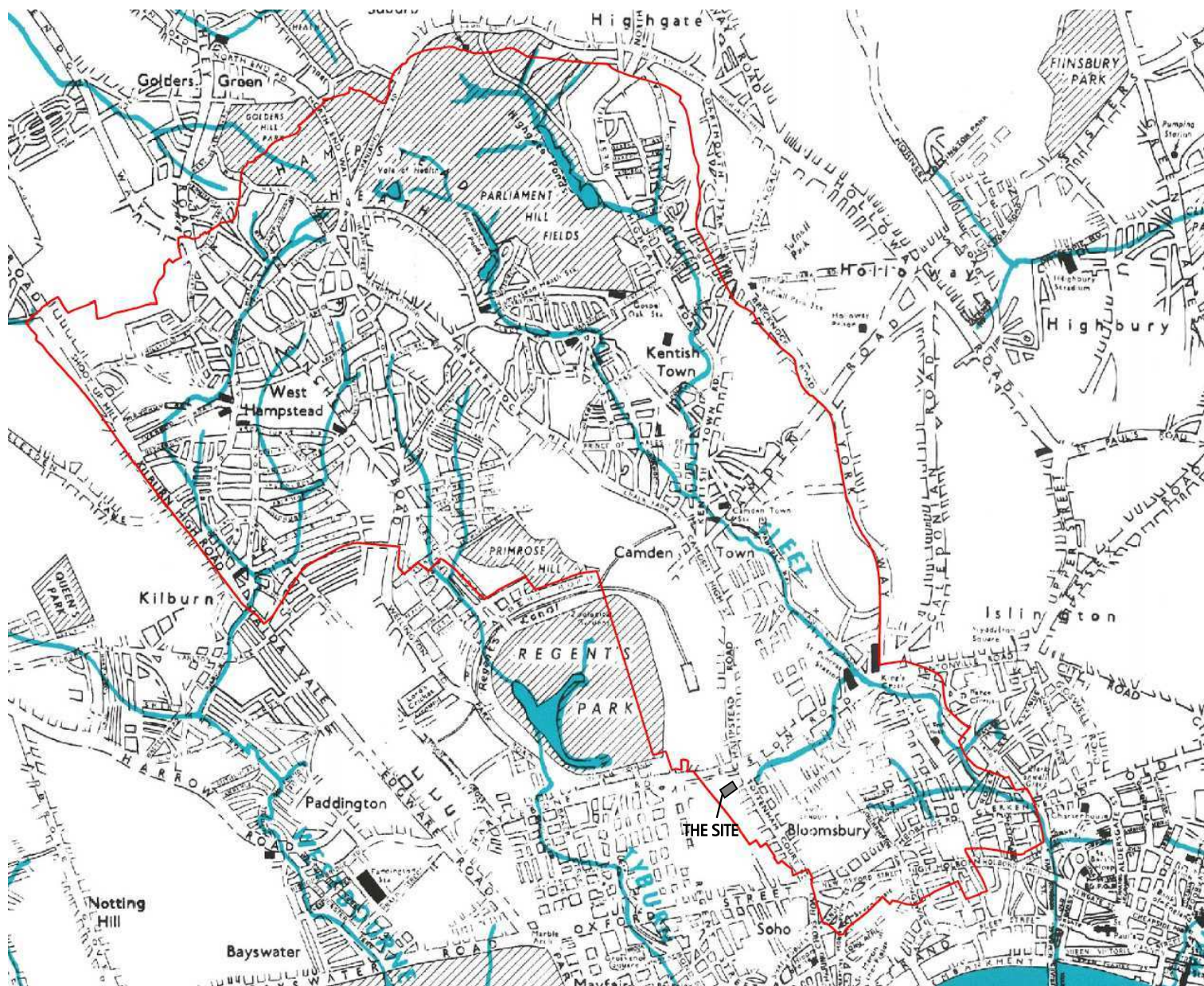
Camden Geological, Hydrogeological and Hydrological Study Camden Aquifer Designation Map

Report: G7180

Site: 7 Fitzroy Square/11 Grafton Mews

Figure: 7





Camden Geological, Hydrogeological and Hydrological Study
Watercourses

Source – Barton, Lost Rivers of London