

Waste and Recycling Report

7 Fitzroy Square, London W1T 5HL

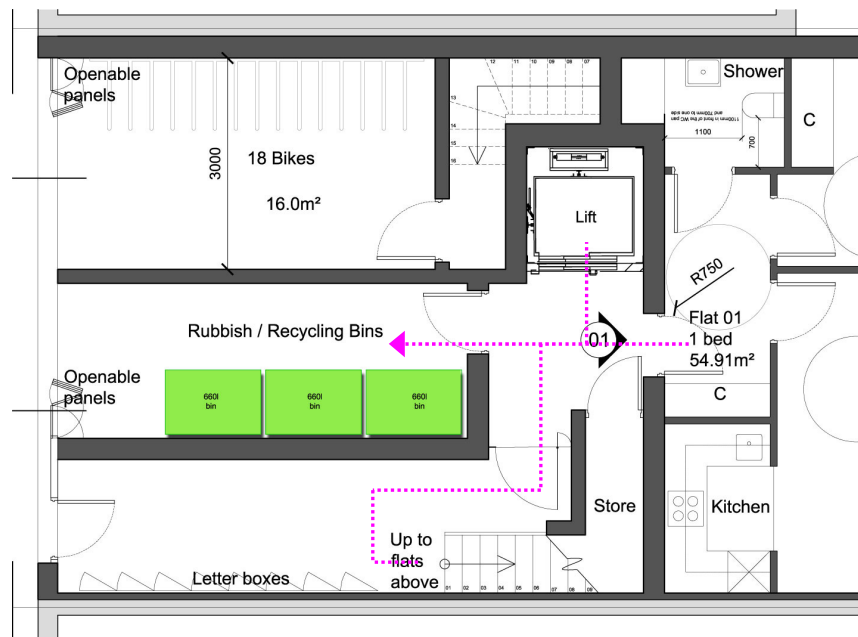
October 2011

BROOKSMURRAY ARCHITECTS

Waste requirements:

3 x 660 litres bins (2No residual waste, 1No. bin for con-mingled recycling) for 7 No flats (11 Grafton Mews) and 2 x 140 litres bins & 2 x 44l recycling box for main building (7 Fitzroy Sq.)

Access from flats (Ground floor)



Access from main building (Lower ground floor)

