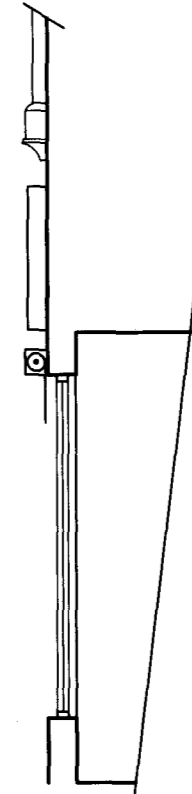
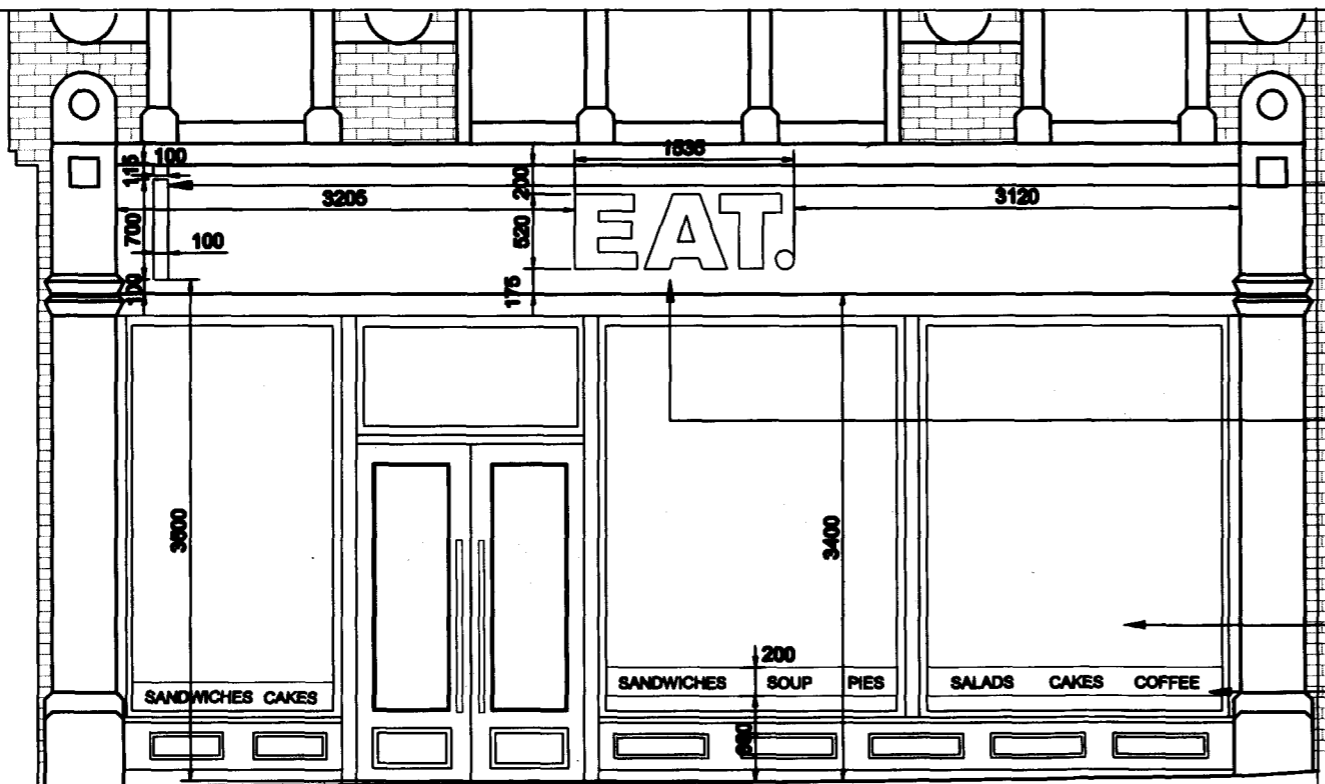




EXISTING EXTERNAL ELEVATION



EXISTING EXTERNAL SECTION



PROPOSED EXTERNAL ELEVATION

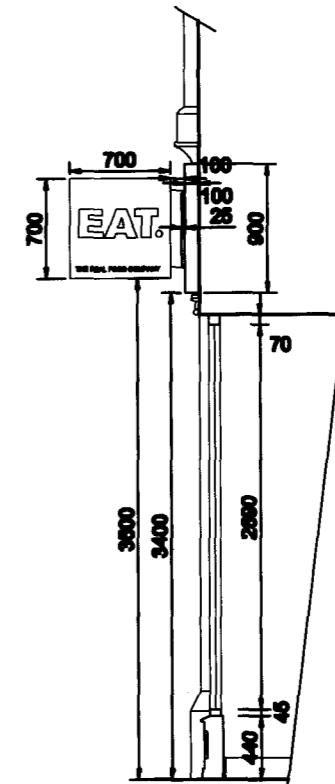
EXISTING SHOPFRONT TO BE CAREFULLY REMOVED AND ANY HISTORIC SHOPFRONT FEATURES RETAINED AND INCORPORATED.

DOUBLE SIDED PROJECTING SIGN. INTERNALLY ILLUMINATED BOX FINISHED RAL 8011, TEXT OPAL PERSPEX AND CREAM VINYL. ONLY THE LETTERS ARE TO BE ILLUMINATED.

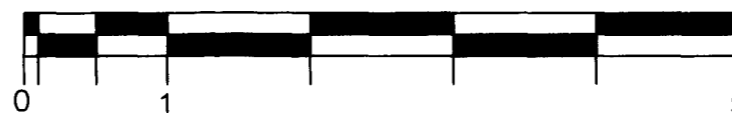
100MM DEEP LIGHT BOX POWDER COATED RAL 1011, WITH 2MM DEEP OPAL PERSPEX LETTERS. THE FACE OF THE LIGHT BOX IS REMOVABLE, INTERNAL LIGHTING BY LED'S HUNG EXTERNALLY

NEW PAINTED TIMBER SHOPFRONT AND STALL RISER

200MM VINYL STRIP IN RAL 8011 WITH WHITE WORD GRAPHICS



PROPOSED EXTERNAL SECTION



EAT.
62 TOTTENHAM COURT ROAD
LONDON W1

Drawing Title
EXISTING AND PROPOSED
EXTERNAL ELEVATIONS AND SECTIONS
SHOWING POSITION OF ADVERTISEMENTS

PRELIMINARY ISSUE

Scale Date
1:1250 @ A3 August 2011

Drawn By Checked By
JP LT

Drawing No. Rev.
2384 - 31 A

Revisions
Rev. Date. Description
A 22.08.11 POSITION OF DOOR
AMENDED

All site dimensions and levels to be verified by contractors and subcontractors on site prior to manufacture
Do not scale from this drawing
To be read in conjunction with all other drawings and contract documentation
Contractor to refer to all relevant consultants and engineers drawings throughout the course of the works All works to comply to local authority requirements
Any errors, dimensional discrepancies or omissions to be reported to inature prior to manufacture
Drawing is for design intent only

inature
architecture & design

Unit 6, Old Garden House, The Lantons,
Bridge Lane, London SW11 3AD
T. 0207 228 8100 F. 0207 228 8123

© inature 2011