



Twenty First Architecture Ltd,  
30 Underwood Street,  
London,  
N17JQ  
Tel: +44(0)20 7324 2662  
www.21starchitecture.com

Client Jewish Care

Project Proposed Residential Development at  
Kay Court, 368-372 Finchley Road

Drawing Title  
Kay Court  
Lifetime Homes Criteria 10 + 14

Status	Planning	Drawn ZA	Checked PK
--------	----------	-------------	---------------

Scale	1:50@A1 1:100@A3	Date October 2011
-------	------------------	----------------------

Dwg. No.	104_LTH_10	Revision P1
----------	------------	----------------



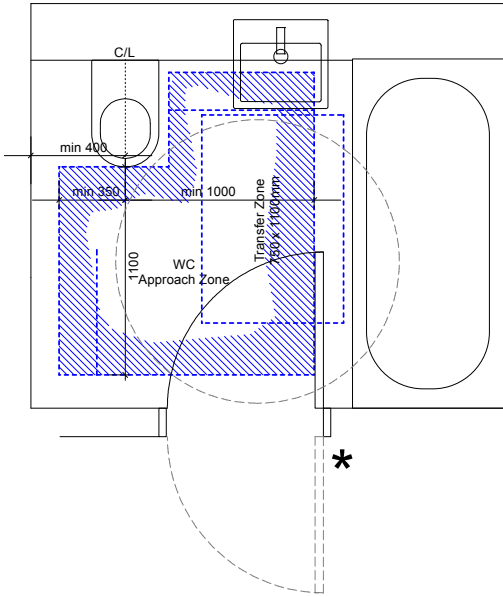
Lifetime Homes Criteria 10

\* Note: Accessible WC door swing outward.

Lifetime Homes Criteria 14

Bathrooms incorporate ease of access to bath, WC and wash basin.

Bathroom Type 1



Bathroom Type 2

