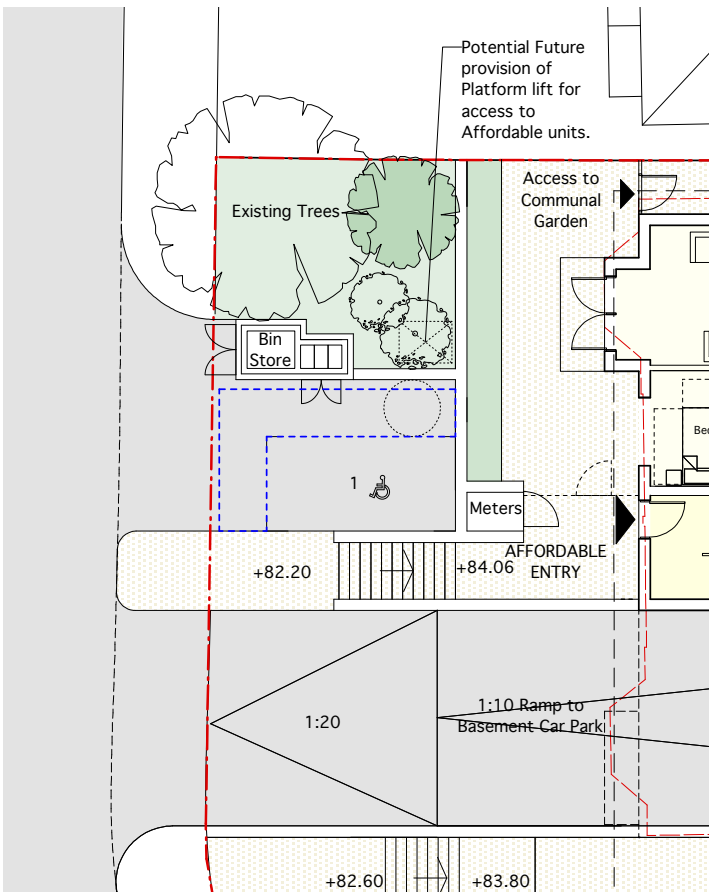
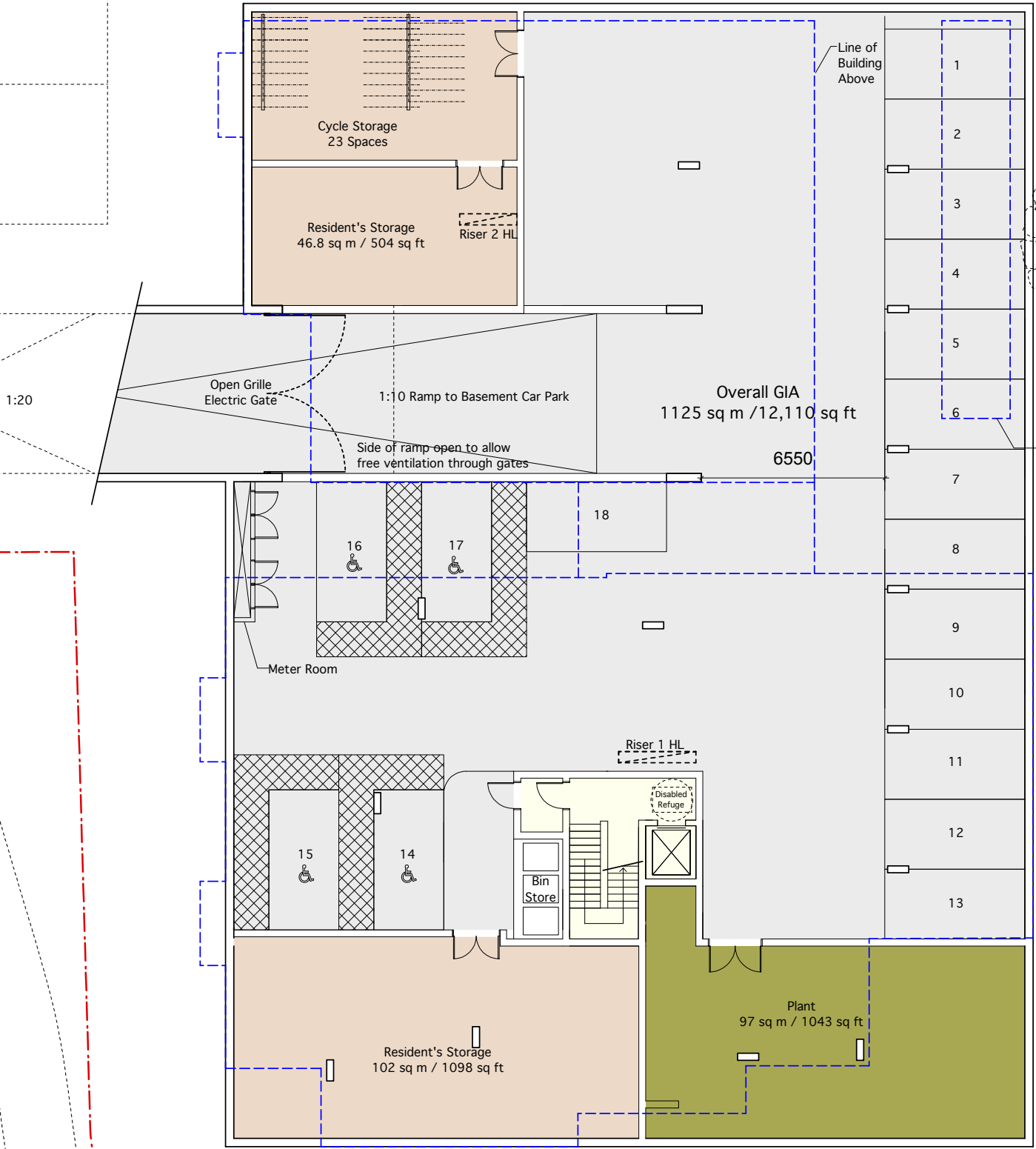
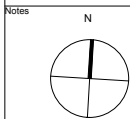


Lifetime Homes Criteria 1

Basement parking provided for Private Accommodation of which four are 3300 mm wide. Access from parking to all private flats via lift from basement.

One affordable car space provided capable of adaption to 3300 mm width, adjacent to affordable block.

Information contained within this drawing is the sole copyright of 21st Architecture Ltd. and is not to be reproduced without express permission. No implied licence exists. This drawing not to be used for land transfer or valuation purposes. Do not scale from this drawing. All dimensions & levels are to be checked on site by the contractor. Issued for purposes indicated only. Drawing errors and omissions to be reported to the architect.



P1 Issued for Planning 25.10.11 ZA



Twenty First Architecture Ltd,
30 Underwood Street,
London,
N17JQ
Tel: +44(0)20 7324 2662
www.21starchitecture.com

Client Jewish Care

Project Proposed Residential Development at
Kay Court, 368-372 Finchley Road

Drawing Title
Kay Court
Lifetime Homes Criteria 1

Status Planning Drawn ZA Checked PK

Scale 1:100@A1 1:200@A3 Date July 2011

Dwg. No. 104_LTH_01 Revision -