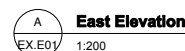


Note



Project	Proposed Residential Development at Kay Court, 368-372 Finchley Road
---------	---

Drawing Title

Kay Court
Existing Elevations

Status	Planning	Drawn MC	Checked PK
Scale	1:100@A1/1:200@A3		Date Aug 2011
Drwg. No.	104 EX ELE01		Revision P1