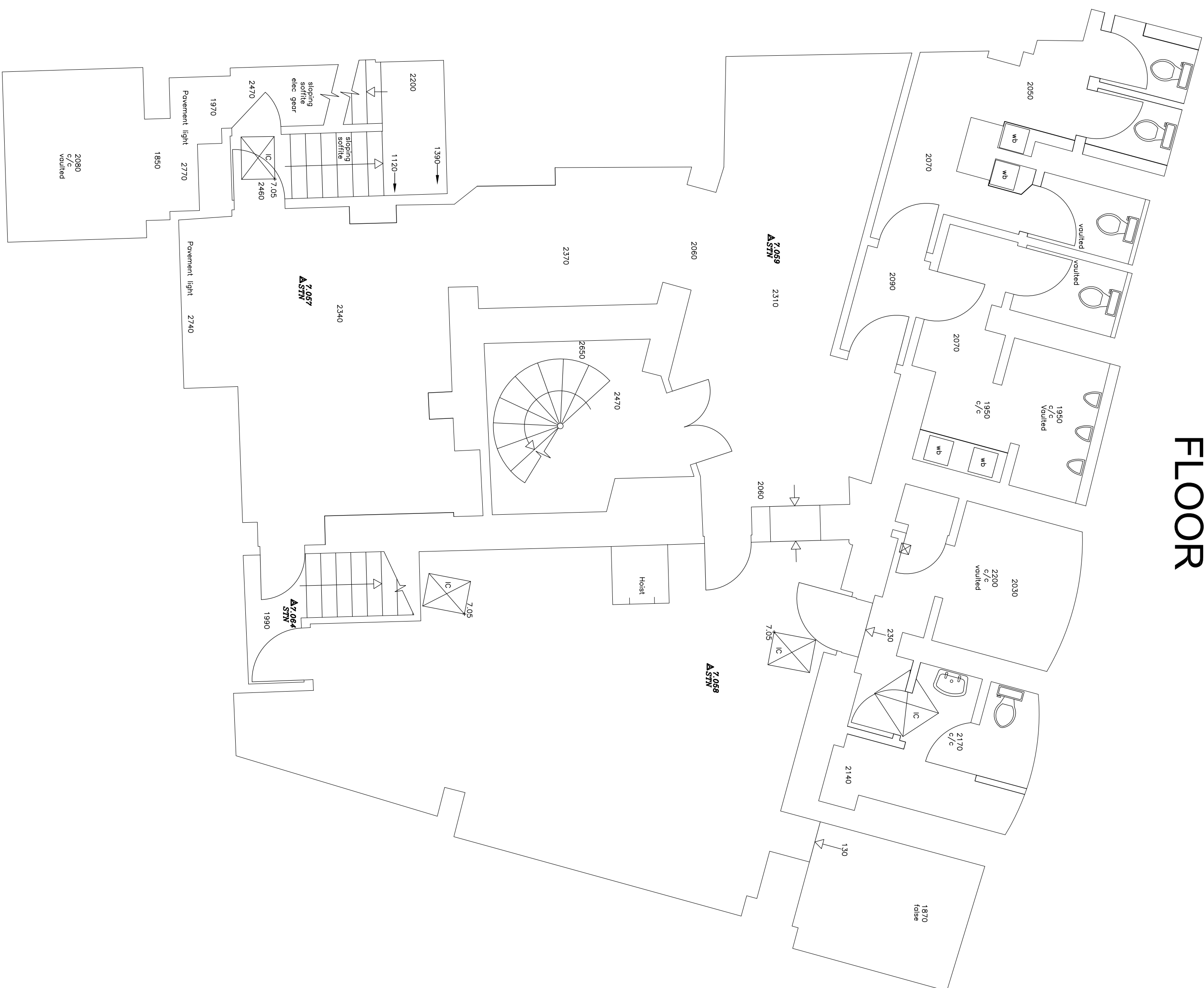


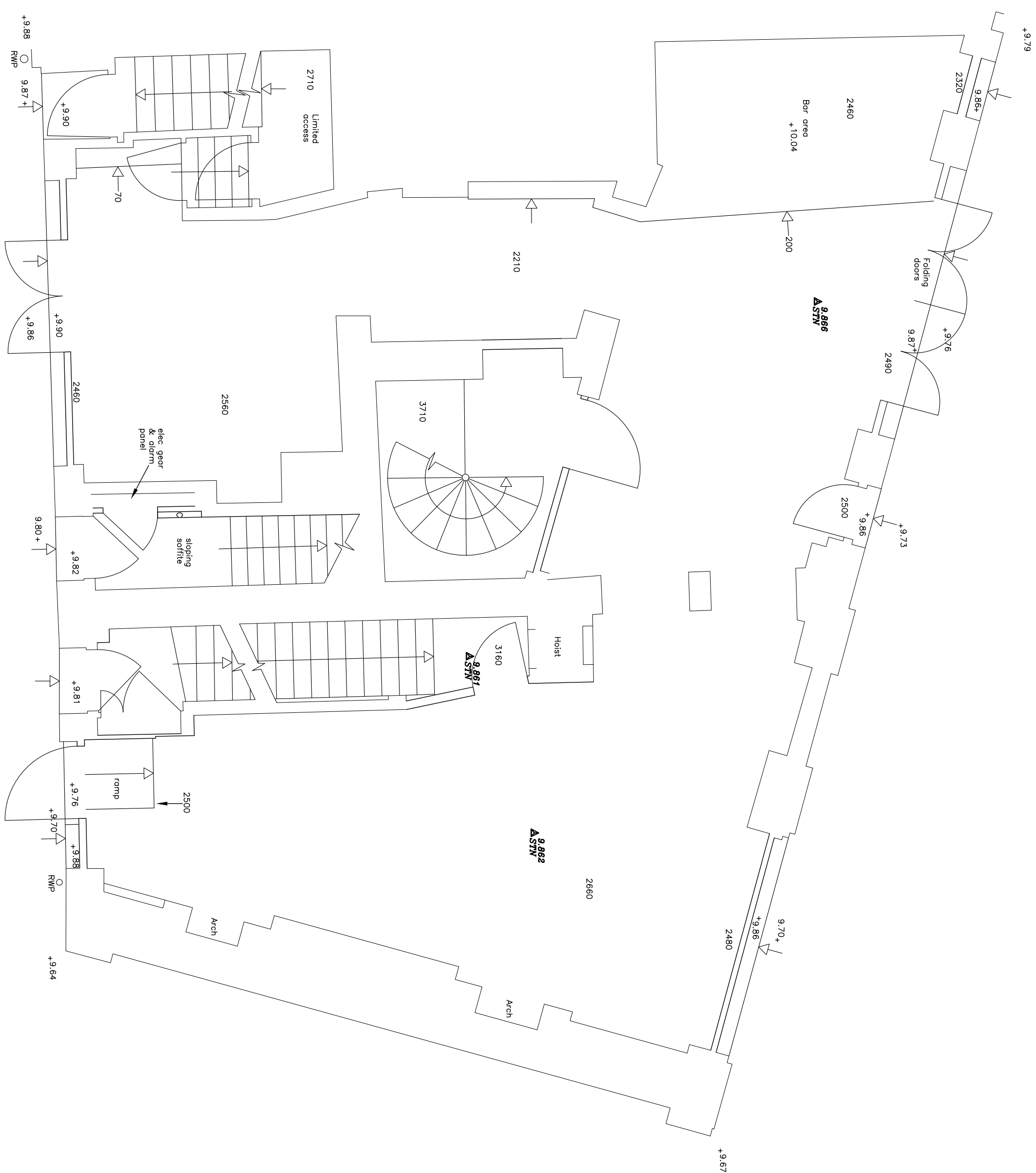
EXISTING BASEMENT
FLOOR

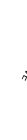


A vertical scale bar labeled "METRES" at the top. It has horizontal tick marks at intervals of 1 unit from 0 to 5, then a longer tick mark at 10, and another longer tick mark at 15. The numbers 0, 1, 2, 3, 4, 5, 10, and 15 are placed to the right of the scale bar.

9.613
ASTN

EXISTING GROUND
FLOOR



Name:			
<div></div>			
<div>This drawing is the property of ANDREWS AND BOYD. Copyright is reserved and this drawing is issued on the condition that it is not copied or disclosed by or to any unauthorised persons without the prior consent in writing of ANDREWS AND BOYD. This drawing is not to be scaled for the purposes of setting-out. Dimensions to be checked on site and verified prior to commencing.</div>			
North	Client	Project	Andrews + Boyd Consultants Limited
	ANDREWS AND BOYD	47 - 49 NEW OXFORD STREET, LONDON, WC2H 8EH.	
	Scale	Drawn by	Drawing Title
	1:50 @ A1		EXISTING BASEMENT & GROUND FLOOR PLAN
Project No.	Date	Checked by	Drawing No.
	OCT 2011		E010
24 Old Burlington Street, London. W1S 3AW			