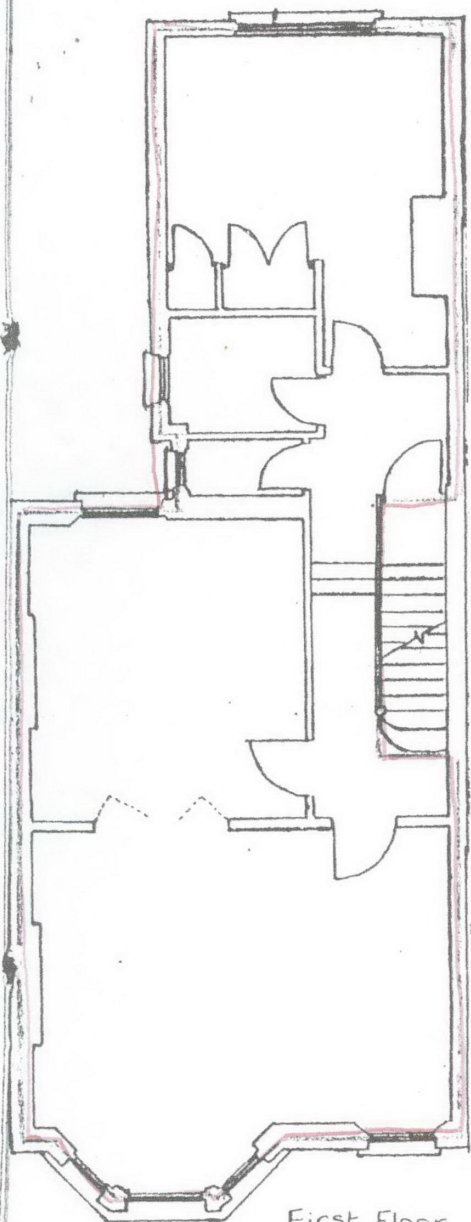
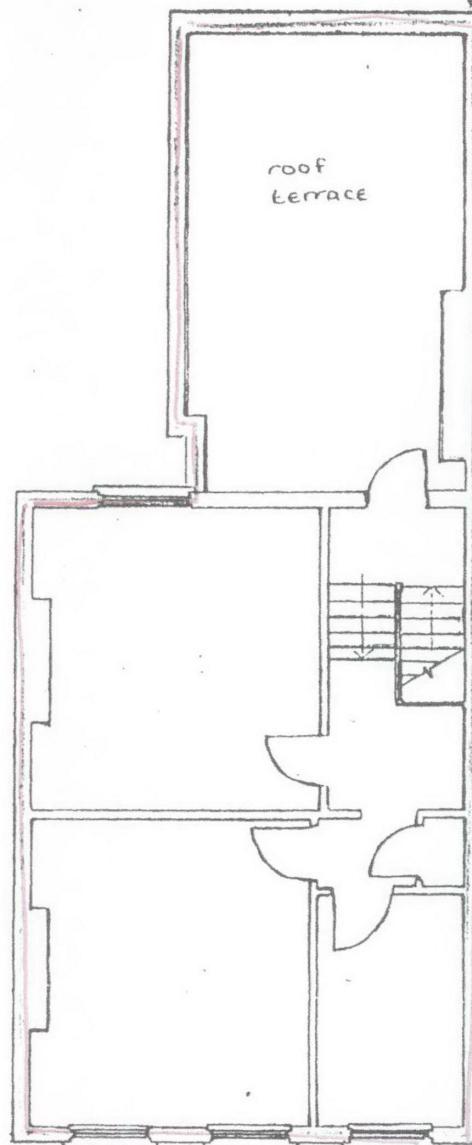


supplied by the Corporation to the Tenant on written request without charge to the Tenant

(d) The certificate shall contain a summary of the Corporation



First Floor



Second Floor

90B, SAVERNAKE ROAD N.W.3.

Mayor *Thomas Robinson*
J. Nicholls
Chief Executive
NOTES and Town Clerk

1. Plans for identification purposes only. Not to scale.
2. The Ordnance Survey extract defines the curtilage of no. 90 Savernake Road N.W.3. outlined in heavy black; the extent of the demised flat to be ascertained from the large plan(s).
3. The large plan identifies by red outline at floor level, the demised premises.
4. Garden land included in the demise is shown coloured pink on the Ordnance Survey extract.

