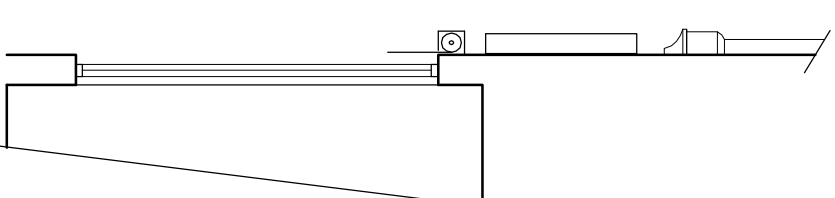
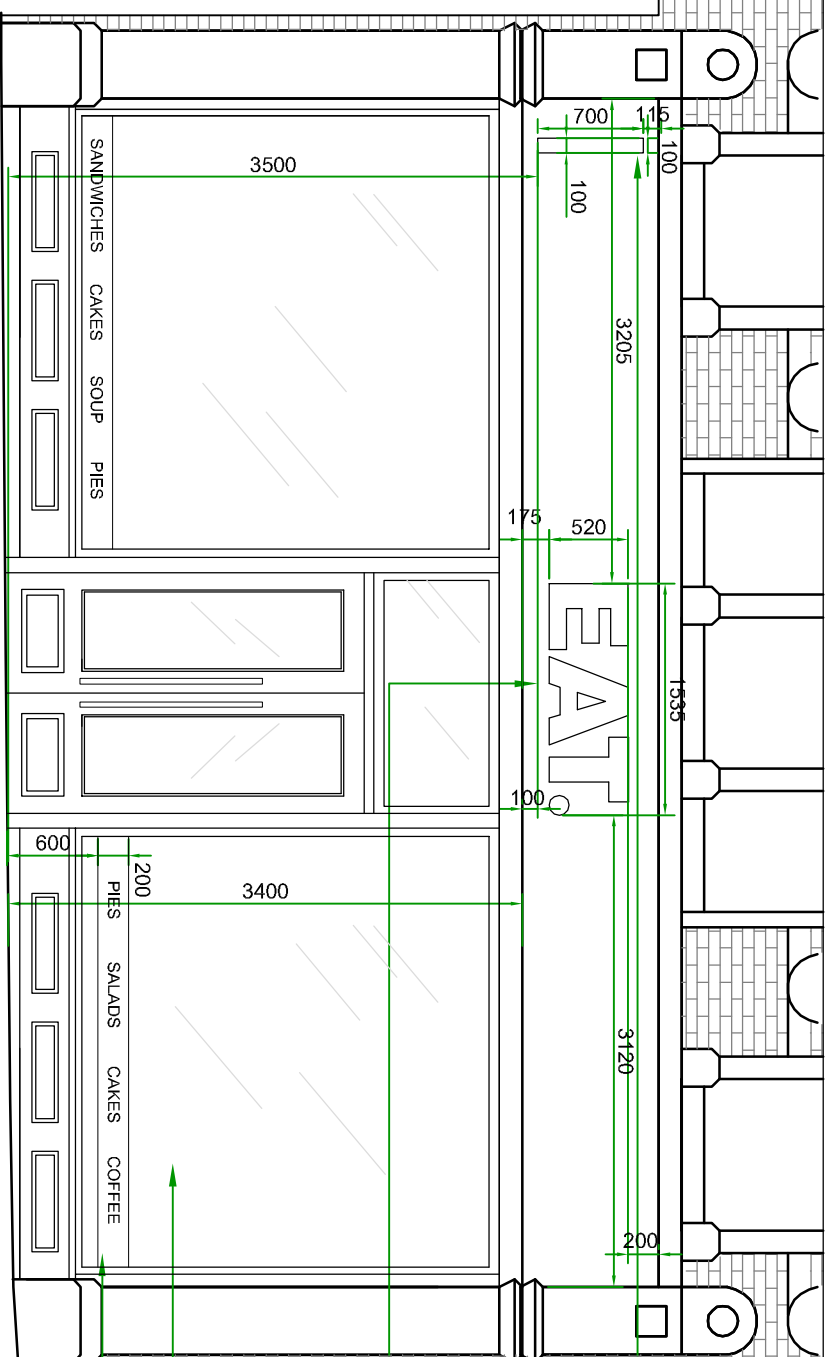


EXISTING EXTERNAL ELEVATION



EXISTING EXTERNAL SECTION



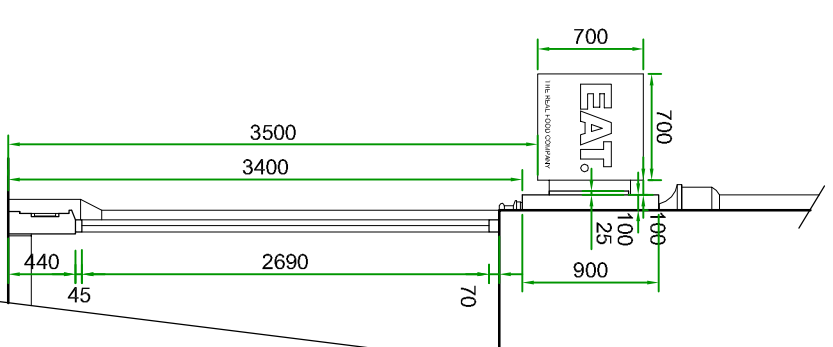
PROPOSED EXTERNAL ELEVATION

EXISTING SHOPFRONT TO BE CAREFULLY REMOVED AND ANY HISTORIC SHOPFRONT FEATURES RETAINED AND INCORPORATED.

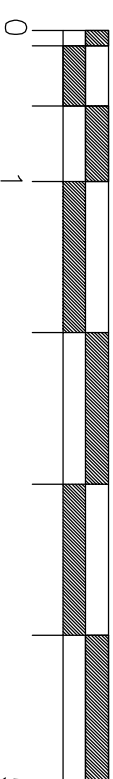
DOUBLE SIDED PROJECTING SIGN, INTERNALLY ILLUMINATED BOX FINISHED RAL 8011, TEXT OPAL PERSPEX LETTERS, ONLY THE LETTERS ARE TO BE ILLUMINATED.

100MM DEEP LIGHT BOX POWDER COATED RAL 1011, WITH 25MM DEEP OPAL PERSPEX LETTERS, THE FACE OF THE LIGHT BOX IS REMOVABLE, INTERNAL LIGHTING BY LED'S HUNG EXTERNALLY

NEW PAINTED TIMBER SHOPFRONT AND STALL RISER  
200MM VINYL STRIP IN RAL 8011 WITH WHITE WORD GRAPHICS



PROPOSED EXTERNAL SECTION



Revisions

Rev. No.	Date	Description
0		A 22.09.11 POSITION OF DOOR
1		AMENDED B 09.11.11 POSITION OF DOOR
5		AMENDED

Drawing Title  
EXISTING AND PROPOSED EXTERNAL ELEVATIONS AND SECTIONS SHOWING POSITION OF ADVERTISEMENTS

Drawn By  
JP

Checked By  
LT

PRELIMINARY ISSUE

Scale  
1:50 @ A3

Date  
August 2011

Drawing No.  
2384 - 31

Rev.  
B

EAT.  
62 TOTTENHAM COURT ROAD  
LONDON W1

All site dimensions and levels to be verified by contractors and subcontractors on site prior to manufacture  
Do not Scale from this drawing  
To be read in conjunction with all other drawings and contact documentation  
Contractor to refer to all relevant consultants and engineers drawings throughout the course of the works All works to comply to local authority requirements  
Any errors, dimensional discrepancies or omissions to be reported to Inature prior to manufacture  
Drawings for design intent only

**inature**  
architecture & design  
Unit 9, Old Garden House, The Lanterns,  
Bridge Lane, London SW11 3AD  
T. 0207 223 8100 F. 0207 223 8123  
© Inature 2011