

TREES

| TOTAL | CODE | SPECIES | SIZE | FORM |
|-------|------|-----------------------------|---------------|-----------|
| 2 | Amel | Amelanchier lamarckii | 3.0-4.0m ht | Multistem |
| 2 | Mag | Magnolia kobus/ soulangeana | 2.0-3.0m ht | Multistem |
| 1 | Pr1 | Prunus cerasifera "Nigra" | 3.0-4.0m ht | Multistem |
| 10 | Tr2 | Tilia cordata | 40-45cm girth | Standard |
| 7 | Tr1 | Tilia platyphyllos 'Rubra' | 40-45cm girth | Standard |

TOPIARY/ SHAPED SPECIMENS

| TOTAL | CODE | SPECIES | SIZE | FORM |
|-------|-------|------------------|-----------------|---------|
| 5 | Carp1 | Carpinus betulus | 3.0m ht | Columns |
| 7 | Carp2 | Carpinus betulus | 2.0m clear stem | Boxed |
| 8 | Tax2 | Taxus baccata | 2.0-2.5m ht | Pyramid |

"EVERGREEN" AND DECIDUOUS SHRUB LAYER

Evergreens
 Prunus laurocerasus, Ilex aquifolium, Rhododendron spp., Viburnum rhytidophyllum, Viburnum tinus, Viburnum davidii, Cotoneaster salicifolius, Taxus baccata (shrub/ feathered)
Deciduous
 Acer palmatum, Amelanchier (smaller spec.), Buddleja, Chaenomeles, Cornus (florida, alternifolia), Corylus avellana, Crataegus (small), Euonymus alatus, Forsythia, Hydrangea (paniculata, arborescens), Magnolia (kobus, stellata), Philadelphus, Rosa, Symphoricarpos, Syringa, Viburnum (opulus, bodnantense, lantana, plicatum)

HERBACEOUS AND LAVENDER BORDERS
 Density: 5 plants per m²

YEW (TAXUS BACCATA) HEDGING
 90-120cm size at 1.5 plants per metre run
 150-180cm size at 1.5 plants per metre run

OUTLINE SPECIFICATION

Plant Beds: 400mm depth topsoil
 Grass Areas: 150mm depth topsoil
 Additional 400mm depth of subsoil over areas of construction fill
 Remove objects greater than 75mm in size from the topsoil and cart away.

Provide an analysis of imported/ stockpiled topsoil with recommendations for making good any deficiencies. Provide details of the source and a 1kg sample of imported topsoil for approval by the Landscape Architect.

TREES

Tree Inspection
 Trees to be selected by the Landscape Architect at the grower's nursery.
 Triple staking: 3No. 75mm diam. x 1800mm long stakes set equidistant around the tree rootball. Top of stake 800mm above ground level. Tree tied to each stake with 25mm wide neoprene straps and 300mm long plastic sleeves.

Oblique staking:
 Single 75mm diam. x 1800mm long stake set at 45 degrees in North East direction and fixed to stem with single spacer and 38mm wide neoprene strap

Single Staking
 Single 75mm diam. x 1800mm long stake fixed twice with neoprene straps and rubber spacers

Underground Guying
 Install 2 sets of timber collars, one above and one below the rootball.
 Timber collar: 4No. 100 x 25mm x 750mm long untreated softwood boards bolted together
 Prior to backfilling with topsoil, strap the collars together and tighten with 3mm multistrand wire. Provide gripples to tension the wire. Anchor the lower collar into firm ground with 4No. 300mm long metal pins, ensuring the tree set vertical.

Root Preparation
 Trees to be rootballed for planting between November and March inclusive. All trees to be container grown or containerised for planting between April to October inclusive.

SHRUB PLANTING
 Backfill 300 x 300 x 300mm deep plant pit with 1 part compost and 5 parts topsoil thoroughly mixed before backfilling.

MULCH
 50mm thick 35-75mm size bark mulch cover to all exposed topsoil within plant beds. 14% maximum wood content permitted. Provide a sample to the Landscape Architect prior to delivery.

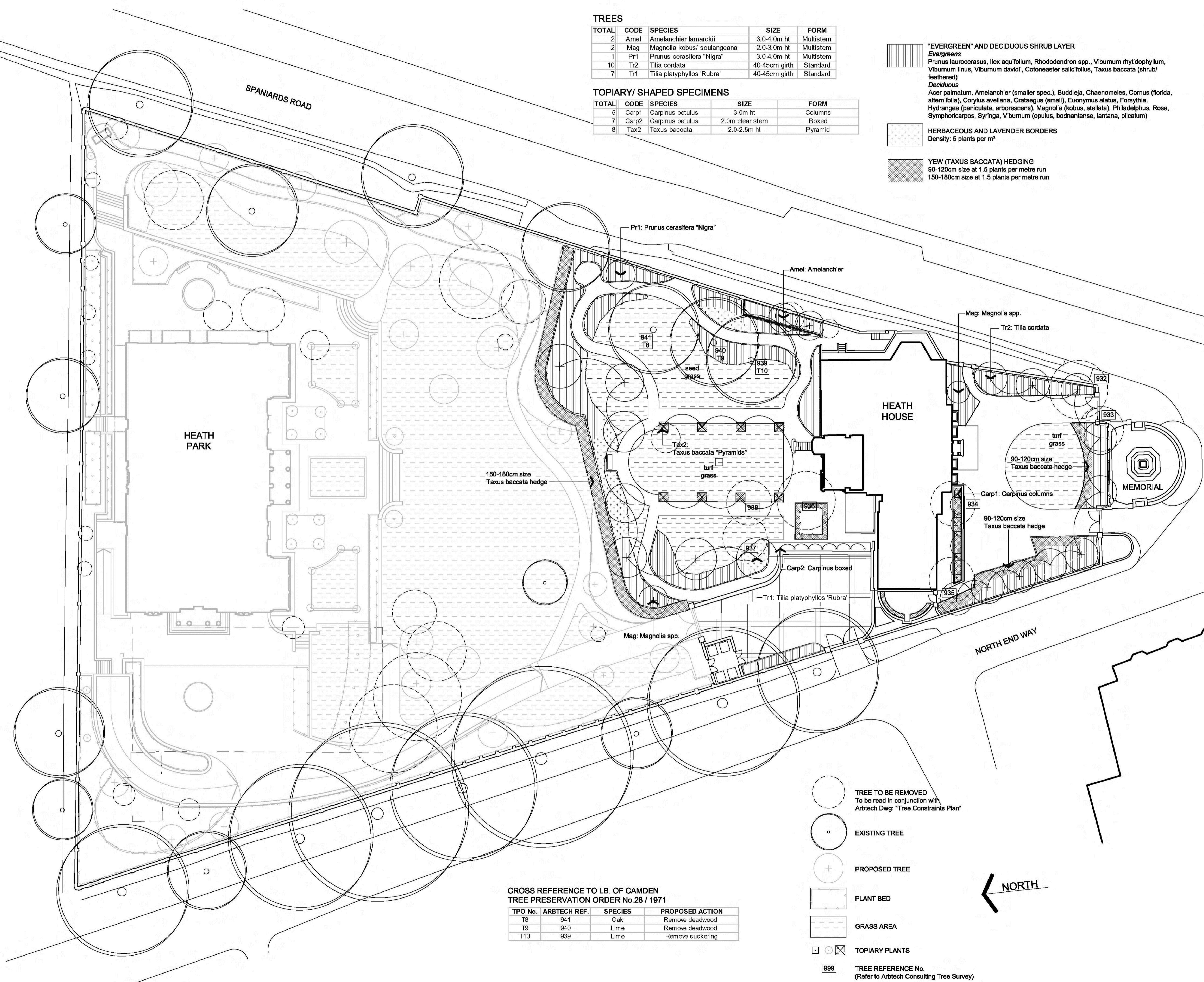
GRASS AREAS
 A general pre-seeding fertiliser shall be applied to the soil between 3 and 5 days before laying turf or sowing seed and incorporated into the top 25mm of tith at a rate of 70gms/sq.m

Seed Grass: Grade "A6" "Shade Tolerant", as supplied by British Seed Houses or similar, sown at a rate of 35 grams per sq.m

Turf Grass: Lay ornamental quality turf grass. Turves shall be in accordance with BS3969, "Recommendations for turf for general landscape purposes".

MAINTENANCE
 Defects Period for 52 weeks following Practical Completion. Allow for 26 maintenance visits for checking irrigation system, watering, cutting, weeding, pruning and collection of leaf litter.

PROTECTION OF EXISTING TREES
 Refer to Arbtch Consulting report



○ TREE TO BE REMOVED
 To be read in conjunction with Arbtch Dwg: "Tree Constraints Plan"

● EXISTING TREE

⊕ PROPOSED TREE

▭ PLANT BED

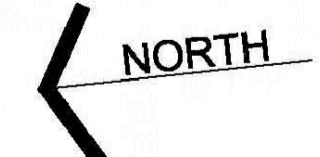
▨ GRASS AREA

⊠ TOPIARY PLANTS

999 TREE REFERENCE No.
 (Refer to Arbtch Consulting Tree Survey)

CROSS REFERENCE TO LB. OF CAMDEN TREE PRESERVATION ORDER No.28 / 1971

| TPO No. | ARBTECH REF. | SPECIES | PROPOSED ACTION |
|---------|--------------|---------|------------------|
| T8 | 941 | Oak | Remove deadwood |
| T9 | 940 | Lime | Remove deadwood |
| T10 | 939 | Lime | Remove suckering |



NOTE: Do not scale from this drawing

Landmark Trees
 20 Broadwick Street, W1F 6HT, London
 Tel: 0207 851 4544 Mobile: 07812 98928
 e-mail: info@landmarktrees.co.uk Web: www.landmarktrees.co.uk

Site: Heath House
 Drawing Title: Planting Plan - 2011 Rev

1:250 @ A1
 Rev A
 Nov 2011