

00. INDEX

Drawing Number	Drawing Title	Description
E04018/00	Index	Index of Drawings.
E04018/01	Location Plan	Scale 1:1250 at A4.
E04018/02	Block Plan	Photo of Site from above.
E04018/03	Roof Plan	Drawing of block from above, showing equipment positions.
E04018/04	South West Elevation 1	Description of cable routes, colour and loom sizes per flats at entry points for each drops
E04018/05	South West Elevation 2	Description of cable routes, colour and loom sizes per flats at entry points for each drops
E04018/06	Roof elevation	Description and location of the antenna, dishes, main cabinet and remote cabinet + Cable routes
E04018/07	Existing Equipments	View and location of existing equipment on site
E04018/08	Antenna, Dish Sizes & Typical Mounting Heights	Antenna and Dishes description, mounting, position, height and measurements.

Form No. SCC 013 SCC International – 1 Fieldings Road, Cheshunt, Herts, EN8 9TL, . Tel: 01992 642255. Website: www.scci.co.uk



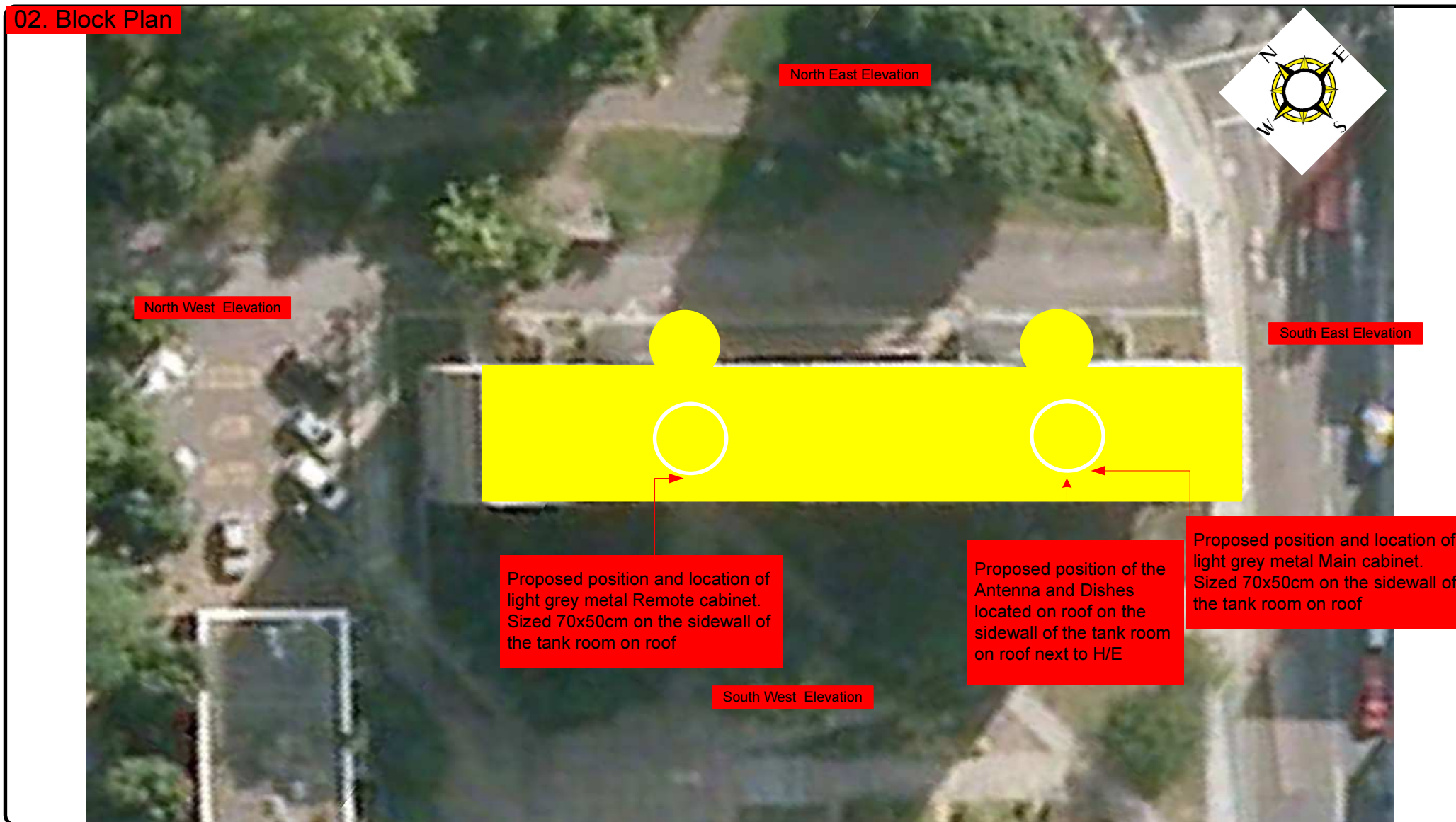
Please consider the environment before printing this document – Recycle Wherever Possible



Site Reference:	E04018/00	Site Address:	FLATS 1-40 HADDO HOUSE, HIGHGATE ROAD, CAMDEN LONDON NW5 1PX
Date:	10/11/2011	Client:	LBC-0738.0
Number of Points:	40	System Type:	9-Wire
		Surveyed By:	G.Henebery
		Drawn By:	W. Kisala

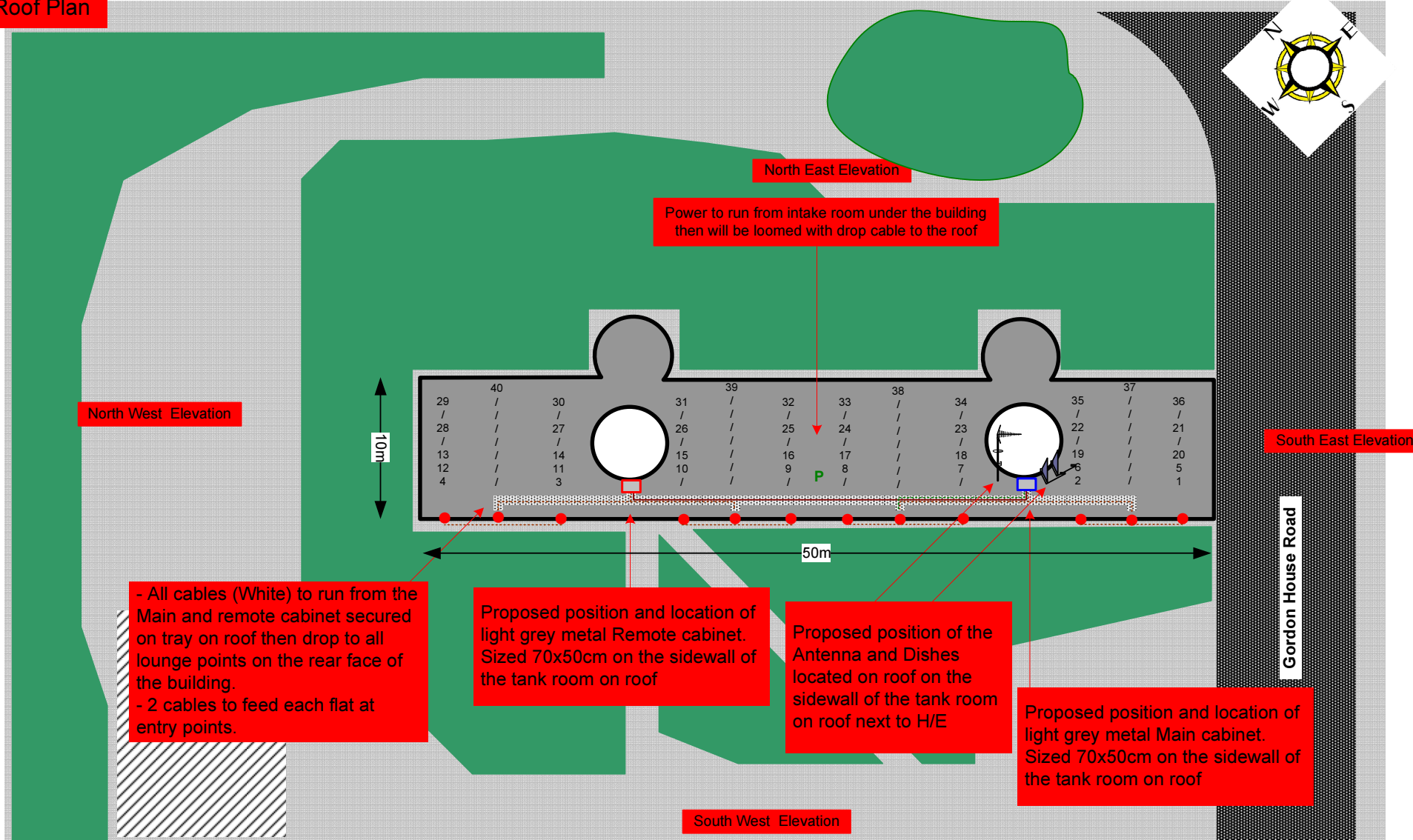


02. Block Plan



Form No. SCC 013 SCC International – 1 Fieldings Road, Cheshunt, Herts, EN8 9TL, . Tel: 01992 642255. Website: www.scci.co.uk						Please consider the environment before printing this document – Recycle Wherever Possible	
Site Reference:	E04018/02	Site Address:	FLATS 1-40 HADDO HOUSE, HIGHGATE ROAD, CAMDEN LONDON NW5 1PX				
Date:	10/11/2011	Client:	LBC-0738.0	Surveyed By:	G.Henebery		
Number of Points:	40	System Type	9-Wire	Drawn By:	W. Kisala		

03. Roof Plan



Form No. SCC 013 SCC International – 1 Fieldings Road, Cheshunt, Herts, EN8 9TL, . Tel: 01992 642255. Website: www.scci.co.uk

Please consider the environment before printing this document – Recycle Wherever Possible

Site Reference:	E04018/03	Site Address:	FLATS 1-40 HADDO HOUSE, HIGHGATE ROAD, CAMDEN LONDON NW5 1PX
Date:	10/11/2011	Client:	LBC-0738.0
Number of Points:	40	System Type:	9-Wire
		Surveyed By:	G.Henebery
		Drawn By:	W. Kisala



Each property will have two cables to lounge position.

Cable Harness sizes

2-4 cables = 15mm

6-8 cables = 20mm

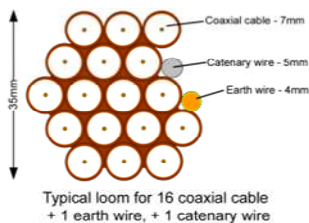
10-14 cables = 30mm

16-18 Cables = 35mm

20 cables = 40mm

40 cables = 65mm

60 cables = 90mm



04. South West Elevation 1

- All cables (White) to run from the Main and remote cabinet above ground floor to then drop to all lounge points on the rear of the building.

- Entry point around the balcony of each flat. 2 cables to feed each flat.



Form No. SCC 013 SCC International – 1 Fieldings Road, Cheshunt, Herts, EN8 9TL, . Tel: 01992 642255. Website: www.scci.co.uk

Site Reference:	E04018/04	Site Address:	FLATS 1-40 HADDO HOUSE, HIGHGATE ROAD, CAMDEN LONDON NW5 1PX
Date:	10/11/2011	Client:	LBC-0738.0
Number of Points:	40	System Type:	9-Wire
		Surveyed By:	G.Henebery
		Drawn By:	W. Kisala

Please consider the environment before printing this document – Recycle Wherever Possible



Each property will have two cables to lounge position.

Cable Harness sizes

2-4 cables = 15mm

6-8 cables = 20mm

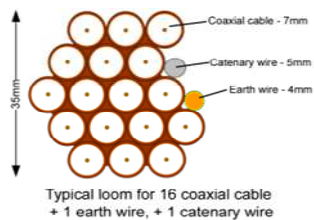
10-14 cables = 30mm

16-18 Cables = 35mm

20 cables = 40mm

40 cables = 65mm

60 cables = 90mm



05. South West Elevation 2



- All cables (White) to run from the Main and remote cabinet above ground floor to then drop to all lounge points on the rear of the building.
- Entry point around the balcony of each flat. 2 cables to feed each flat.

Form No. SCC 013 SCC International – 1 Fieldings Road, Cheshunt, Herts, EN8 9TL, . Tel: 01992 642255. Website: www.scci.co.uk

Site Reference:	E04018/00	Site Address:	FLATS 1-40 HADDO HOUSE, HIGHGATE ROAD, CAMDEN LONDON NW5 1PX		
Date:	10/11/2011	Client:	LBC-0738.0	Surveyed By:	G.Henebery
Number of Points:	40	System Type:	9-Wire	Drawn By:	W. Kisala

Please consider the environment before printing this document – Recycle Wherever Possible



Each property will have two cables to lounge position.

Cable Harness sizes

2-4 cables = 15mm

6-8 cables = 20mm

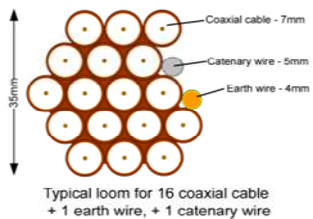
10-14 cables = 30mm

16-18 Cables = 35mm

20 cables = 40mm

40 cables = 65mm

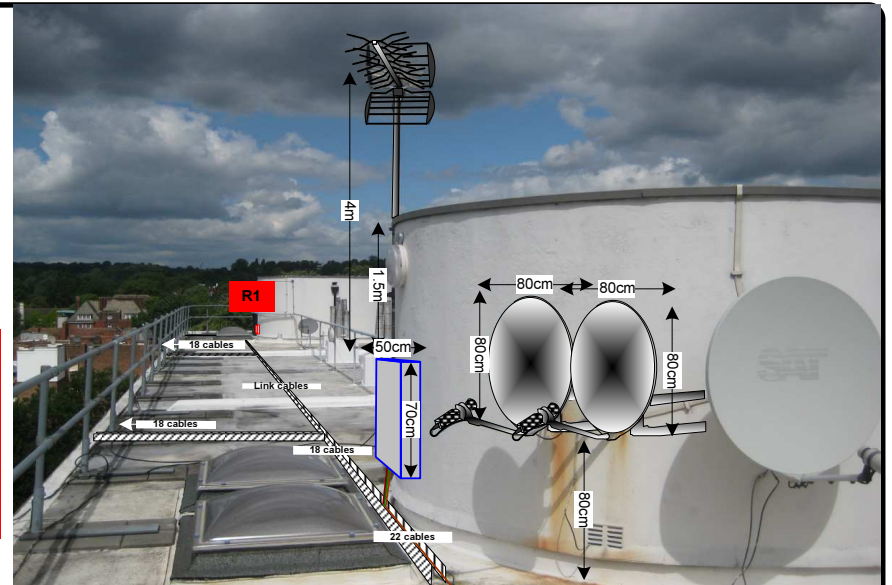
60 cables = 90mm



06. Roof Elevation

Proposed location of UHF Aerial on a 4m pole mounted using wall bracket and 80cm dishes mounted using lashing kits. all installed on the sidewall of the tank room on roof

Proposed position and location of light grey metal Main cabinet and Remote cabinet on the far end of the second tank room. Both sized 70x50cm on the sidewall of the tank room



Loom of 40 cables including power + link cable to exit the Main cabinet then feed flats at the rear of the building

- All cables (White) to run from the Main and remote cabinet secured on tray on roof then drop to all lounge points on the rear face of the building.
- 2 cables to feed each flat at entry points.



Form No. SCC 013 SCC International – 1 Fieldings Road, Cheshunt, Herts, EN8 9TL, . Tel: 01992 642255. Website: www.scci.co.uk

Site Reference:	E04018/06	Site Address:	FLATS 1-40 HADDO HOUSE, HIGHGATE ROAD, CAMDEN LONDON NW5 1PX
Date:	10/11/2011	Client:	LBC-0738.0
Number of Points:	40	System Type:	9-Wire
		Surveyed By:	G.Henebery
		Drawn By:	W. Kisala



Please consider the environment before printing this document – Recycle Wherever Possible



Each property will have two cables to lounge position.

Cable Harness sizes

2-4 cables = 15mm

6-8 cables = 20mm

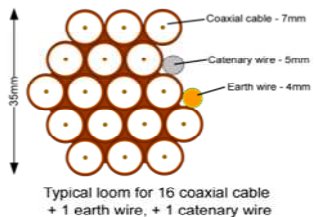
10-14 cables = 30mm

16-18 Cables = 35mm

20 cables = 40mm

40 cables = 65mm

60 cables = 90mm

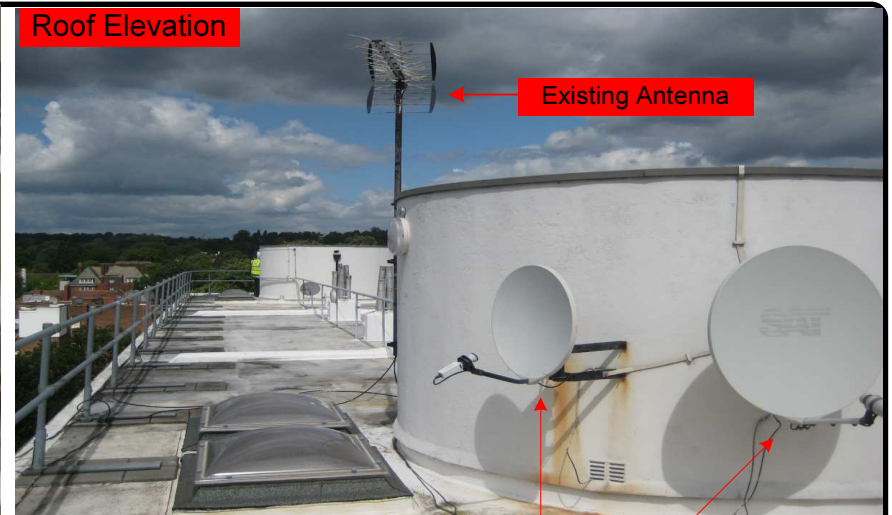


07. Existing Equipments



South West Elevation

Roof Elevation



South West Elevation

Form No. SCC 013 SCC International – 1 Fieldings Road, Cheshunt, Herts, EN8 9TL, . Tel: 01992 642255. Website: www.scci.co.uk

Site Reference:	E04018/07	Site Address:	FLATS 1-40 HADDO HOUSE, HIGHGATE ROAD, CAMDEN LONDON NW5 1PX		
Date:	10/11/2011	Client:	LBC-0738.0	Surveyed By:	G.Henebery
Number of Points:	40	System Type	9-Wire	Drawn By:	W. Kisala

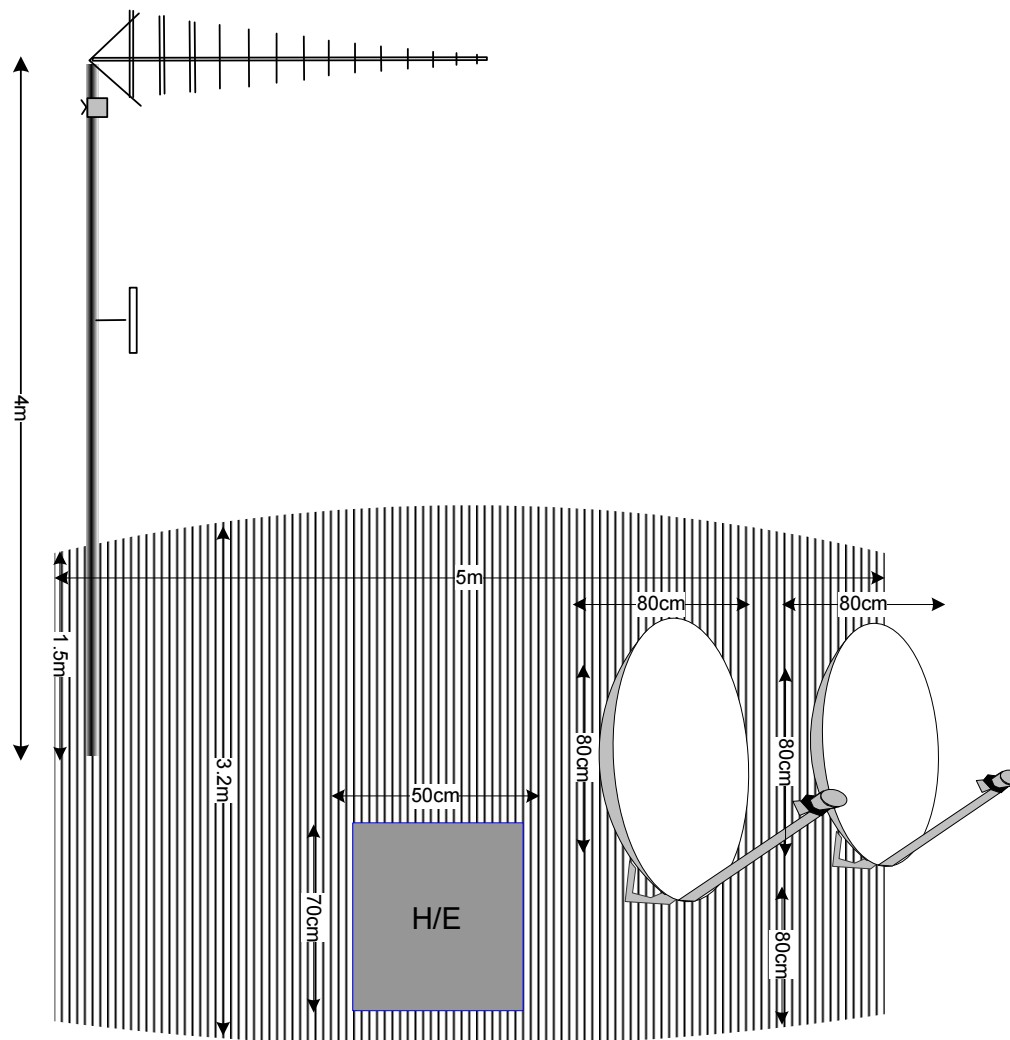
Please consider the environment before printing this document – Recycle Wherever Possible



08. Antenna and Dishes Measurements

Proposed location of UHF Aerial on a 4m pole mounted using wall bracket and 80cm dishes mounted using lashing kits. all installed on the end wall at high

Digital TV,
FM & DAB Radio
Aerials



Form No. SCC 013 SCC International – 1 Fieldings Road, Cheshunt, Herts, EN8 9TL, . Tel: 01992 642255. Website: www.scci.co.uk

Site Reference:	E04018/08	Site Address:	FLATS 1-40 HADDO HOUSE, HIGHGATE ROAD, CAMDEN LONDON NW5 1PX
Date:	10/11/2011	Client:	LBC-0738.0
Number of Points:	40	System Type:	9-Wire
		Surveyed By:	G.Henebery
		Drawn By:	W. Kisala



Please consider the environment before printing this document – Recycle Wherever Possible

