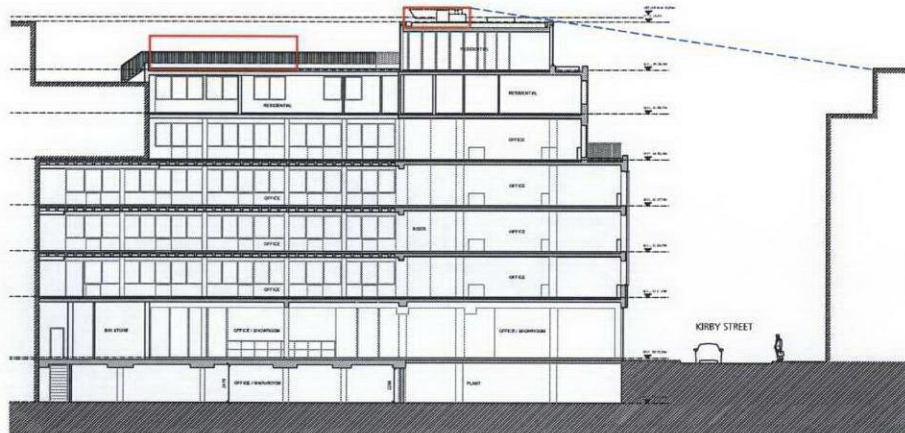


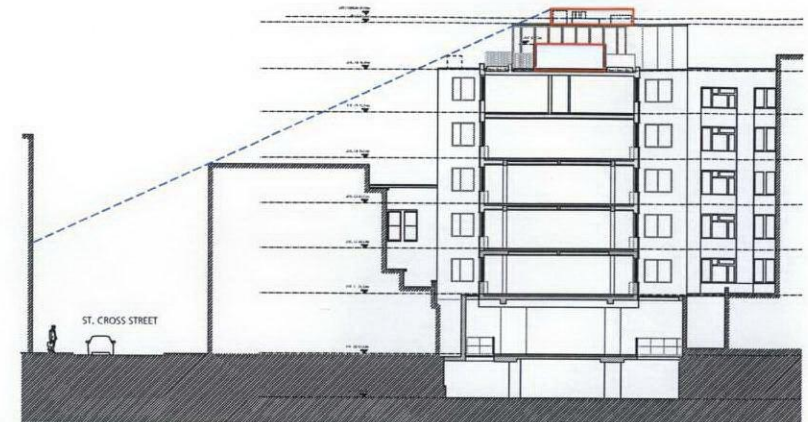
the proposal

revised plant visibility

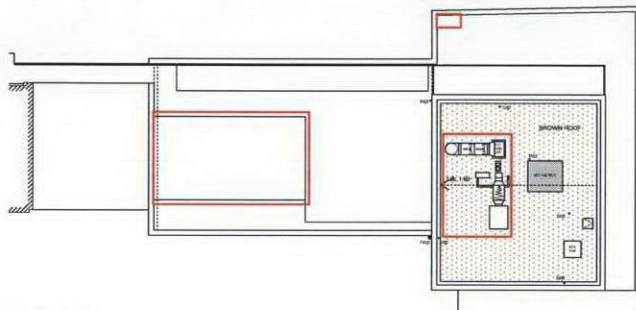
RECEIVED
15 NOV 2011



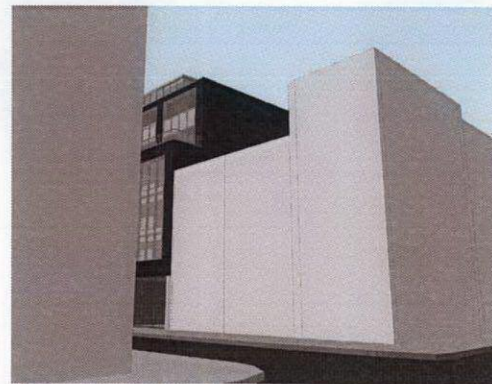
Long Section



Cross Section



Roof Plan



View from St Cross Street

Care has been taken in positioning the roof mounted plant in order for it to be invisible from street level along Kirby Street and St Cross St.

The section diagrams illustrate that the 5th floor plant enclosure and 6th floor ancillary roof mounted plant are set well enough back from the building edge to prevent them from being visible from street level.

The visual illustrating the view from St Cross Street has been taken from as far back as possible on St Cross Street to show that the 5th floor plant enclosure and 6th floor roof mounted plant will not be visible from this view. Plant screens will be specified which will be in keeping with the overall building aesthetic.

 roof-mounted plant

