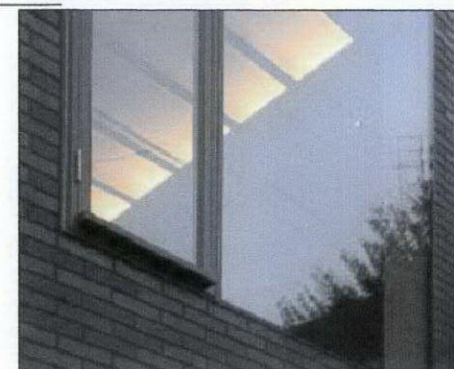


The new extension to be clad in aged metal panels to relate to dominant colours in the neighbourhood. Panels laid vertically. Front door finish to match.

The window frames to be thin profile, partially fixed, frame painted dark gray



Not for construction, Issued for planning

9c Rosslyn Hill, London, NW3 5UL

Proposed front elevation

Drg No. 017/P12
Revision P1

scale 1:50 @ A3
November 2011

KRYSPIK SKOREK Architect tel: 07984239380, kryspin@mail.com

0 0.5 1.25 2.5m