

Michael Popper Associates LLP
Unit B
75 South Western Road
Twickenham, Middlesex TW1 1LG

Telephone 020 8892 7947
Facsimile 020 8892 4022

Michael Popper

Consulting Building Services Engineers

info@michaelpopper.com
www.michaelpopper.com

22nd November 2011

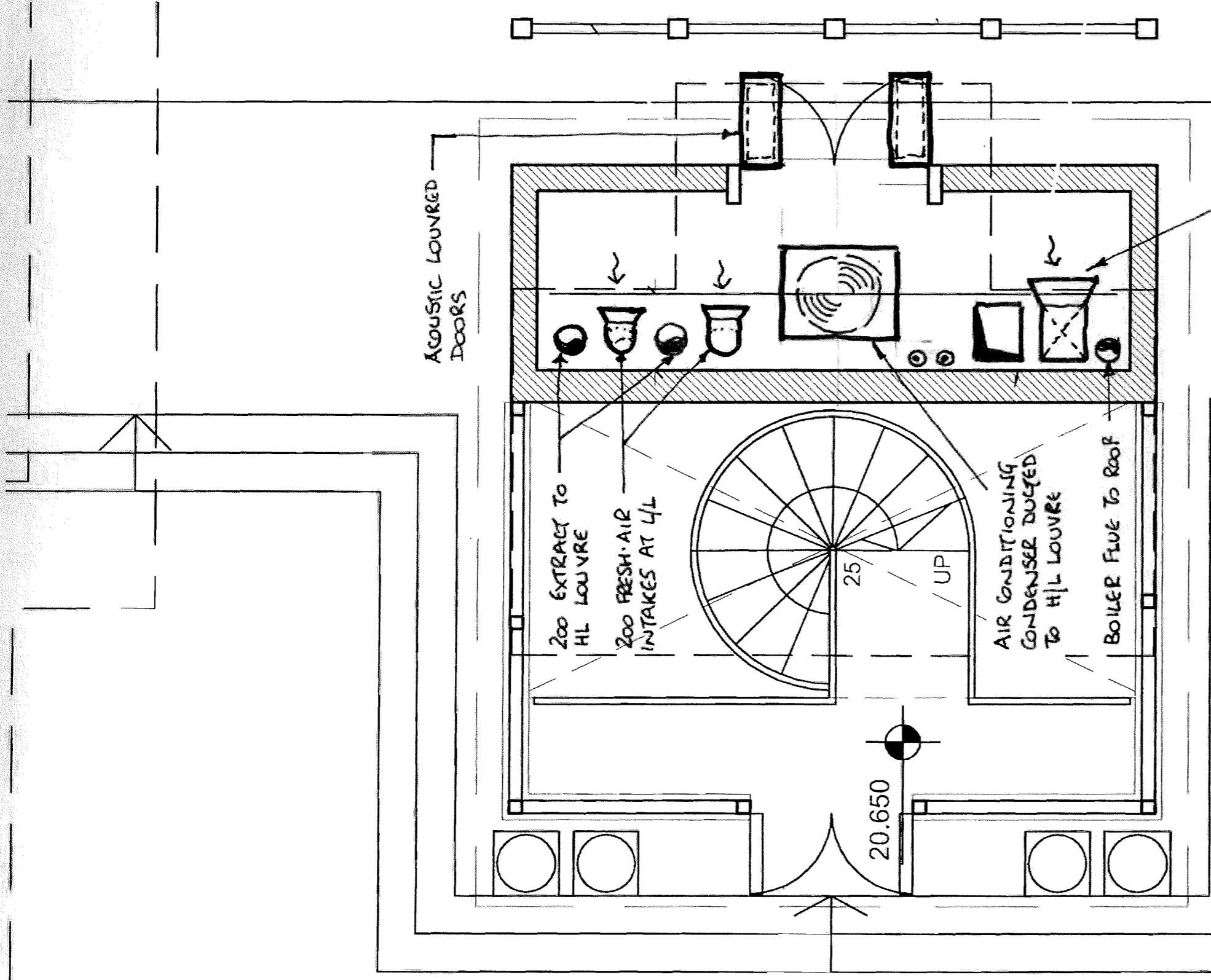
46 AVENUE ROAD, LONDON NW8

Description of proposed mechanical services

Mechanical ventilation and air conditioning will be installed to all areas. Boiler, ventilation and pool filtration equipment will be located in the sub-basement plantroom. A central air conditioning condensing unit will be housed in a plant enclosure at the rear of the new summer house, which will have acoustic louvres for air circulation as indicated in the acoustic report prepared by NVP Ltd. Fresh air inlet and exhaust ducts from the ventilation plant will include silencers and will terminate on the inside face of the acoustic louvres.

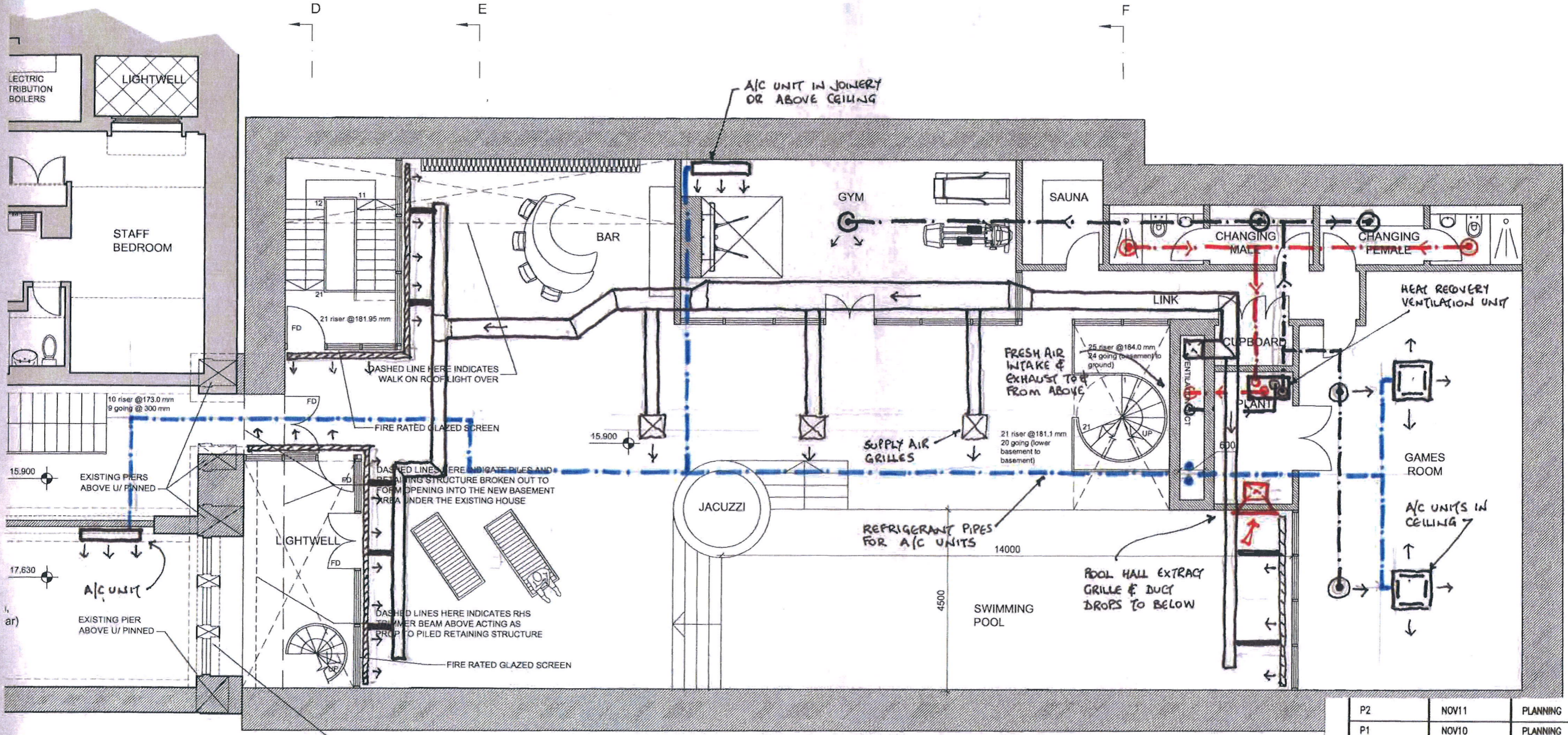
There will be no external mechanical equipment.

Air conditioning will be by a variable refrigerant flow (VRF) system of concealed indoor fan coils connected by refrigerant pipes to the central condensing unit. The swimming pool area will have humidity control from a ducted heat recovery air handling unit. Fresh air to other occupied rooms will be provided by a secondary heat recovery ventilation unit.



P2	NOV11	PLANNING
P1	NOV10	PLANNING
Revision	Date	Details
Michael Popper Associates LLP Consulting Building Services Engineers Unit B 75 South Western Road Twickenham Middlesex TW1 1LG Telephone 020 8892 7947 Facsimile 020 8892 4022 info@michaelpopper.com www.michaelpopper.com		
Project 46 AVENUE ROAD, LONDON NW8		
Drawing Title MECHANICAL SERVICES; NEW SUMMER HOUSE DETAIL		
Scale	Drawing by	Checked
1:50	MBP	
Date	Drawing No	Revision
NOV 2010	592/M/SK01	P2

MichaelPopper

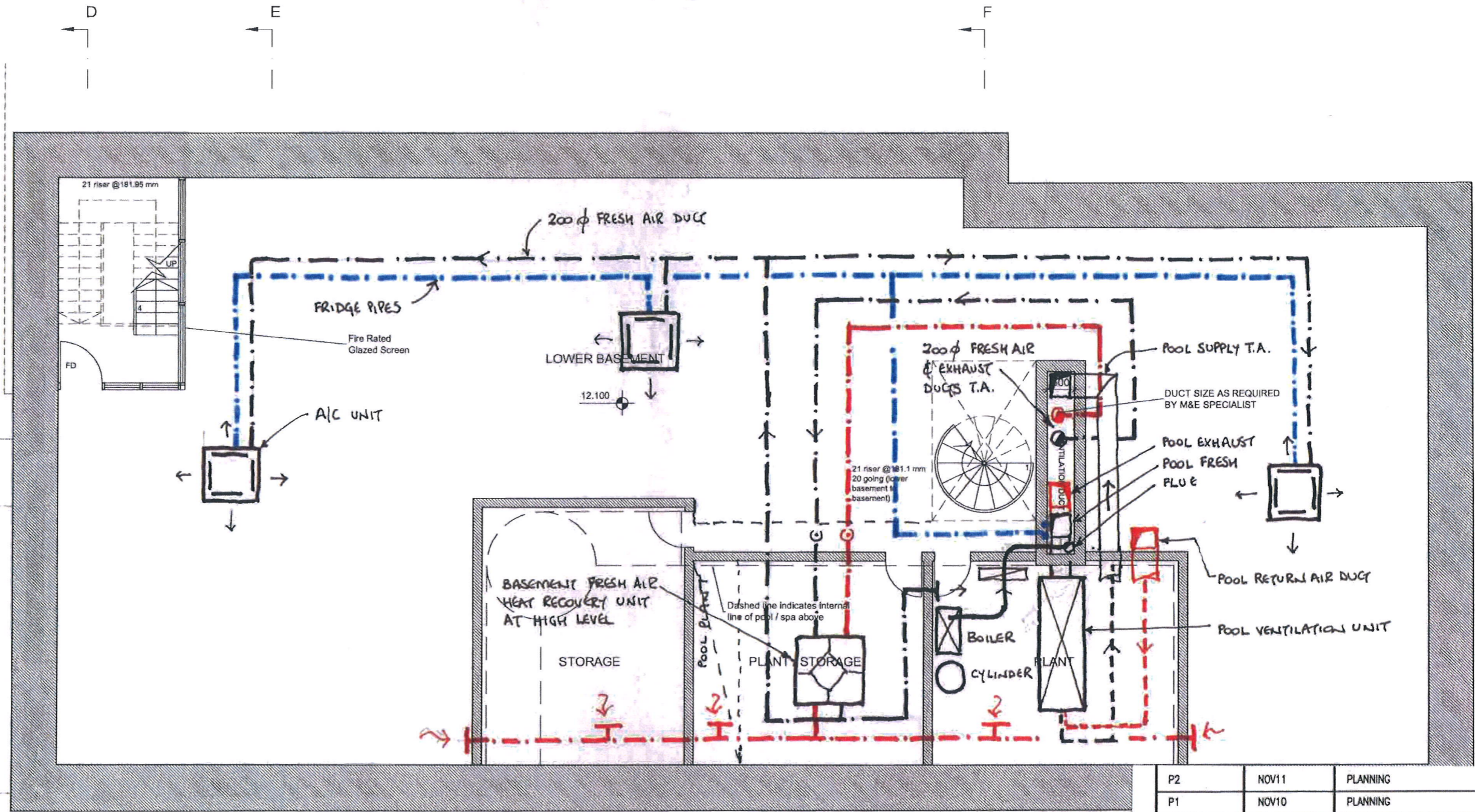


outline of underpinning Zone

NEW WINDOW TO MATCH ARRANGEMENT OF THOSE ABOVE

P2	NOV11	PLANNING
P1	NOV10	PLANNING
Revision	Date	Details
Michael Popper Associates LLP Consulting Building Services Engineers		
Unit B 75 South Western Road Twickenham Middlesex TW1 1LG		Telephone 020 8892 7947 Facsimile 020 8892 4022 info@michaelpopper.com www.michaelpopper.com
Project 46 AVENUE ROAD, LONDON NW8		
Drawing Title MECHANICAL SERVICES SKETCH SCHEME - BASEMENT		
Scale 1:100	Drawing by MBP	Checked
Date NOV 2010	Drawing No 592/M/SK02	Revision P2

Michael Popper



P2	NOV11	PLANNING
P1	NOV10	PLANNING
Revision	Date	Details
Michael Popper Associates LLP Consulting Building Services Engineers		
Unit B 75 South Western Road Twickenham Middlesex TW1 1LG		Telephone 020 8892 7947 Facsimile 020 8892 4022 info@michaelpopper.com www.michaelpopper.com
Project 46 AVENUE ROAD, LONDON NW8		
Drawing Title MECHANICAL SERVICES SKETCH SCHEME; SUB-BASEMENT		
Scale 1:100	Drawing by MBP	Checked
Date NOV 2010	Drawing No 592/M/SK03	Revision P2

MichaelPopper