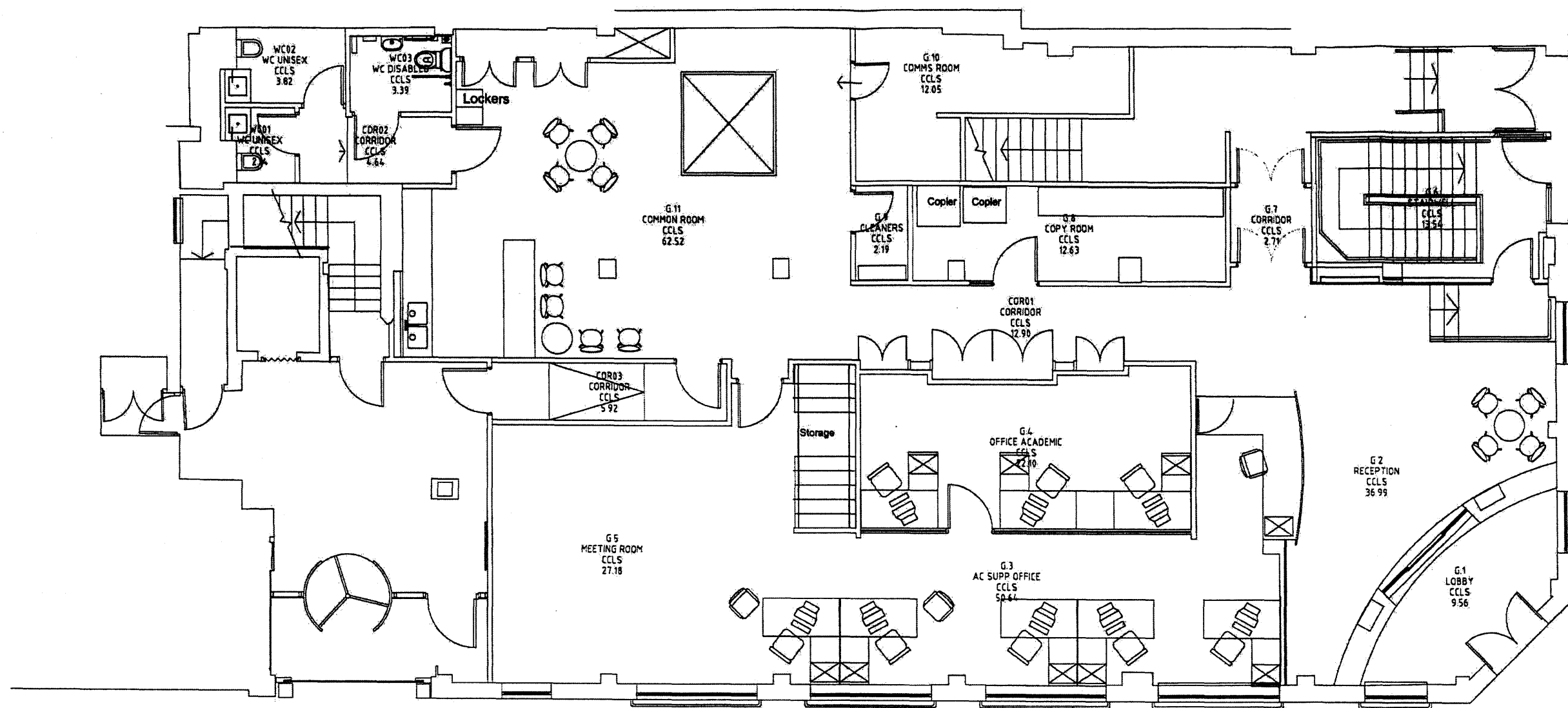


RECEIVED
28 NOV 2011



EXISTING GROUND FLOOR PLAN

1:100

All dimensions to be checked on site before construction.
Any discrepancies to be reported to the Projects Office.
DO NOT scale off this drawing.

All drawings to be read in conjunction with specification.

STAGE C

Rev.	Description	Date
A.		15.08.2011

Building	LINCOLNS INN FIELDS - CCLS
Scheme	ALTERATION & REFURBISHMENT
Title	EXISTING GROUND FLOOR PLAN

Scale	1:100@A3	Date	May 2011
Drawn by: EN	Checked by: JHF	Job No.	Rev.
Approved by:			
Drawing No.	LIF/BF/02		

Queen Mary
University of London

Projects Office (Estates)
Mile End Road London E1 4NS
Tel: 020 7882 8900 Fax: 020 7882 7027