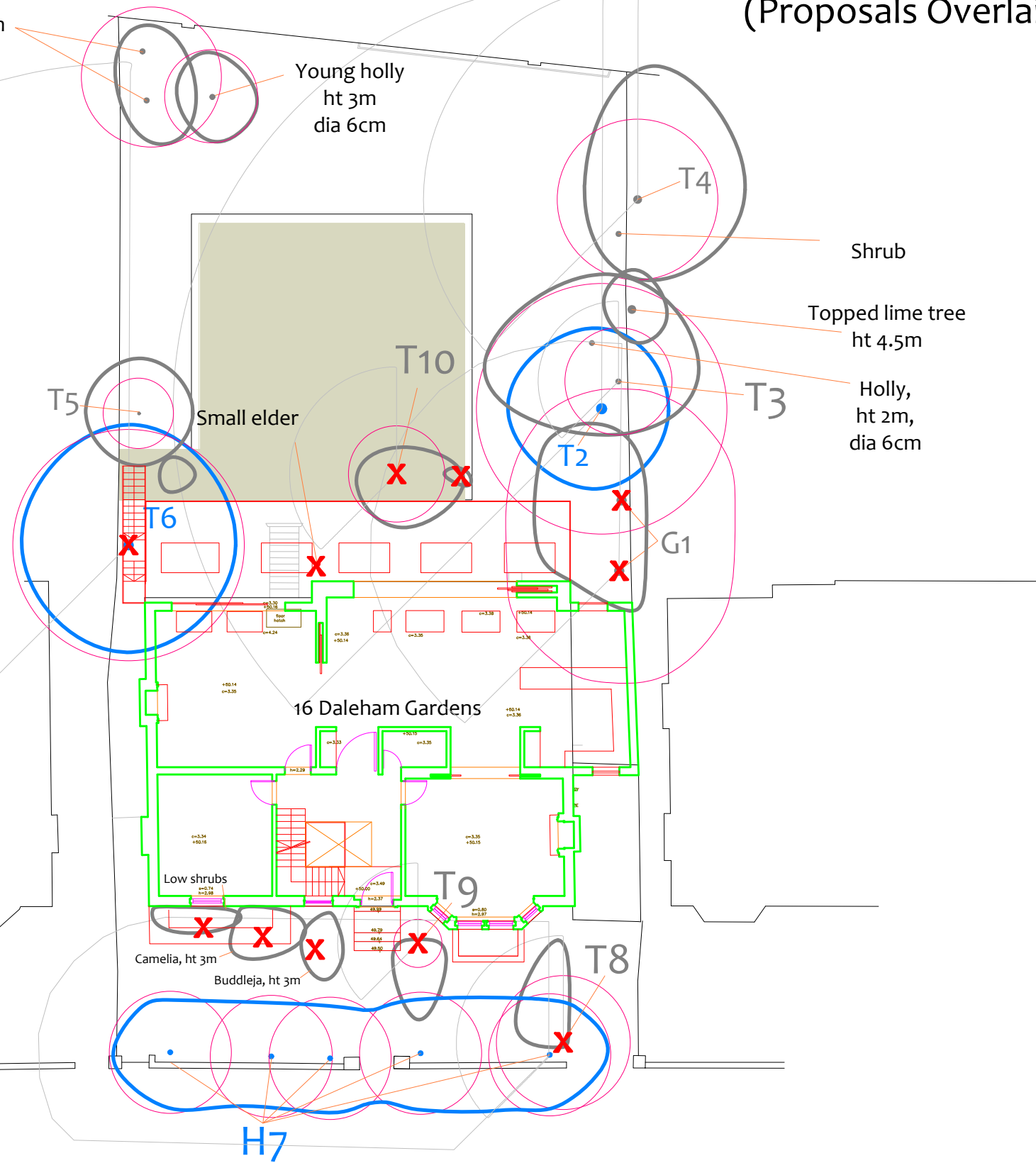


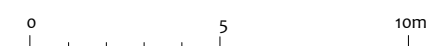
# Tree Removal Plan (Proposals Overlaid)



Poorly formed, low quality laburnum trees dia 15cm



<p>CROWN Arboricultural Consultants 01422 316660</p>	Site: 16 Daleham Gardens	BS 5837 Shade Pattern BS 5837 Root Protection Area T1 Tree number 1 G2 Group number 2 H3 Hedge number 3	Tree to be removed Stem & canopy of Category A tree Stem & canopy of Category B tree Stem & canopy of Category C tree Stem & canopy of Category R tree
	Ref No: 08475C/TRP		
	Scale: 1:200		
	Paper Size: A3		



### BS 5837 Retention Categories

- Category A:** Trees of high quality and amenity. Usually mature trees with a significant life expectancy which would enhance any development. Retention of these trees is strongly encouraged.
- Category B:** Trees of moderate quality and amenity. Usually mature trees, or younger trees with exceptional form. Retention of these trees is desirable though the removal of occasional specimens may be acceptable.
- Category C:** Trees of low quality and amenity. The removal of these trees should generally be seen as acceptable in order to facilitate development.
- Category R:** Trees whose structural condition is such that they should be removed if development is to proceed.