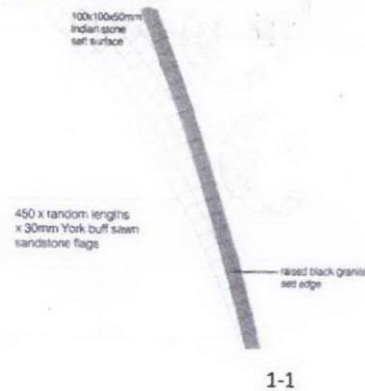
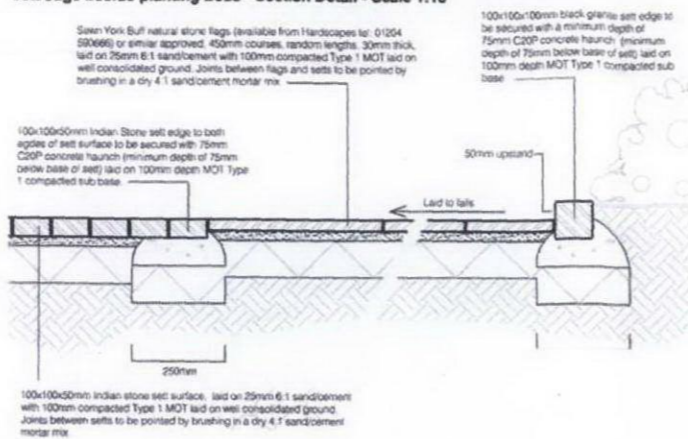


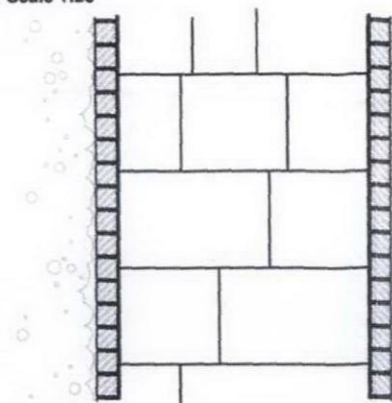
Sawn natural stone surfaces / paths with flush Indian stone sett trim & raised black granite sett edge beside planting beds - Plan Detail - Scale 1:20



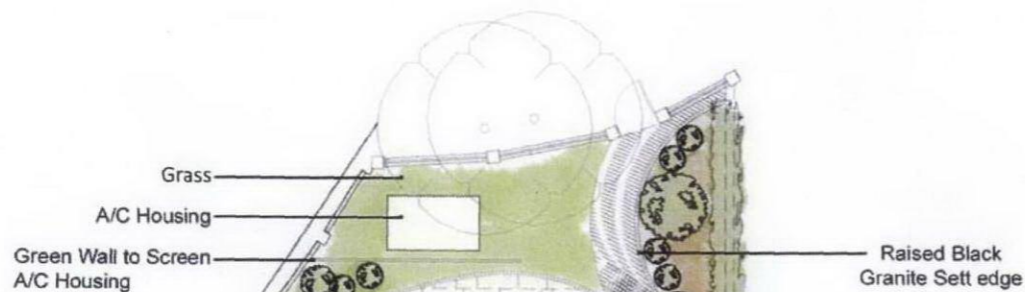
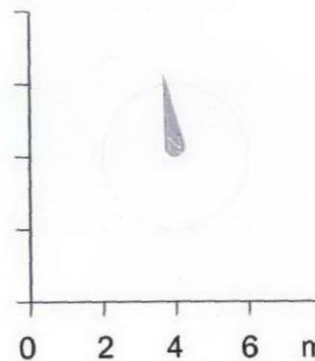
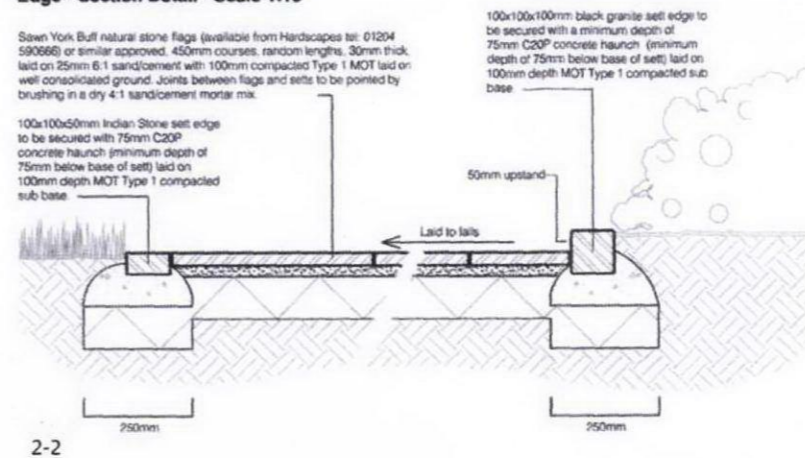
Sawn natural stone terrace with flush Indian stone sett trim & raised black granite sett edge beside planting beds - Section Detail - Scale 1:10



Sawn Natural Stone Footpaths with Flush Indian Stone Sett Trim & Raised Black Granite Sett Edge - Plan Detail - Scale 1:20



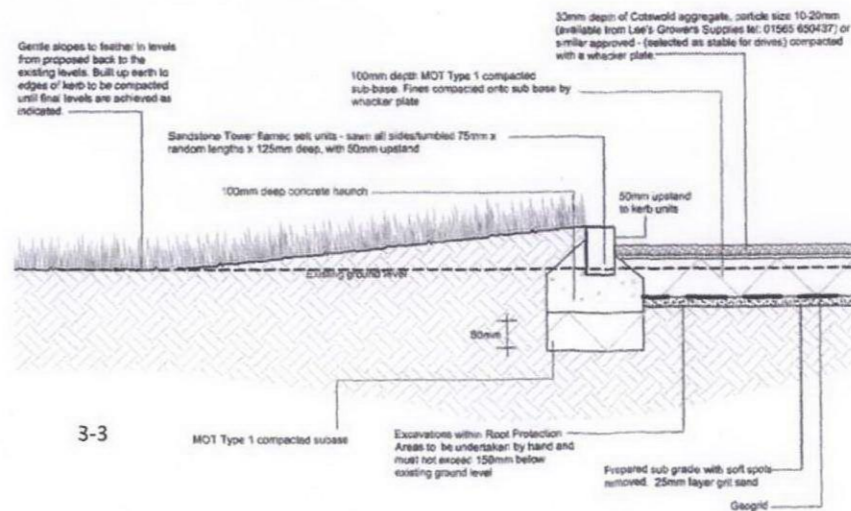
Sawn Natural Stone Footpaths with Flush Indian Stone Sett Trim & Raised Black Granite Sett Edge - Section Detail - Scale 1:10



No.64

No.60

Sandstone Kerbs with Compacted Gravel Surface to Driveway close to Root Protection Areas - Section Detail - Scale 1:10



Revision

Project title

62 Elsworth Road,
London NW3 3BU

Drawing title

Proposed Landscape Plan

Client

St James's Real Estate Holdings Ltd

Scale

1:200 @ A3

Date

November 2011

Dr. no.

1118 00 400 A

Notes

Do not scale this drawing. All dimensions must be checked and Papa Architects are to be informed of any discrepancies prior to construction. This drawing and any of the details therein remain the copyright of Papa Architects Ltd.

Papa Architects Ltd.
222 Archway Road
Highgate
London N6 5AX

Phone: +44(0)20 8348 8411

Fax: +44 (0)20 8348 7411

www.papaarchitects.co.uk