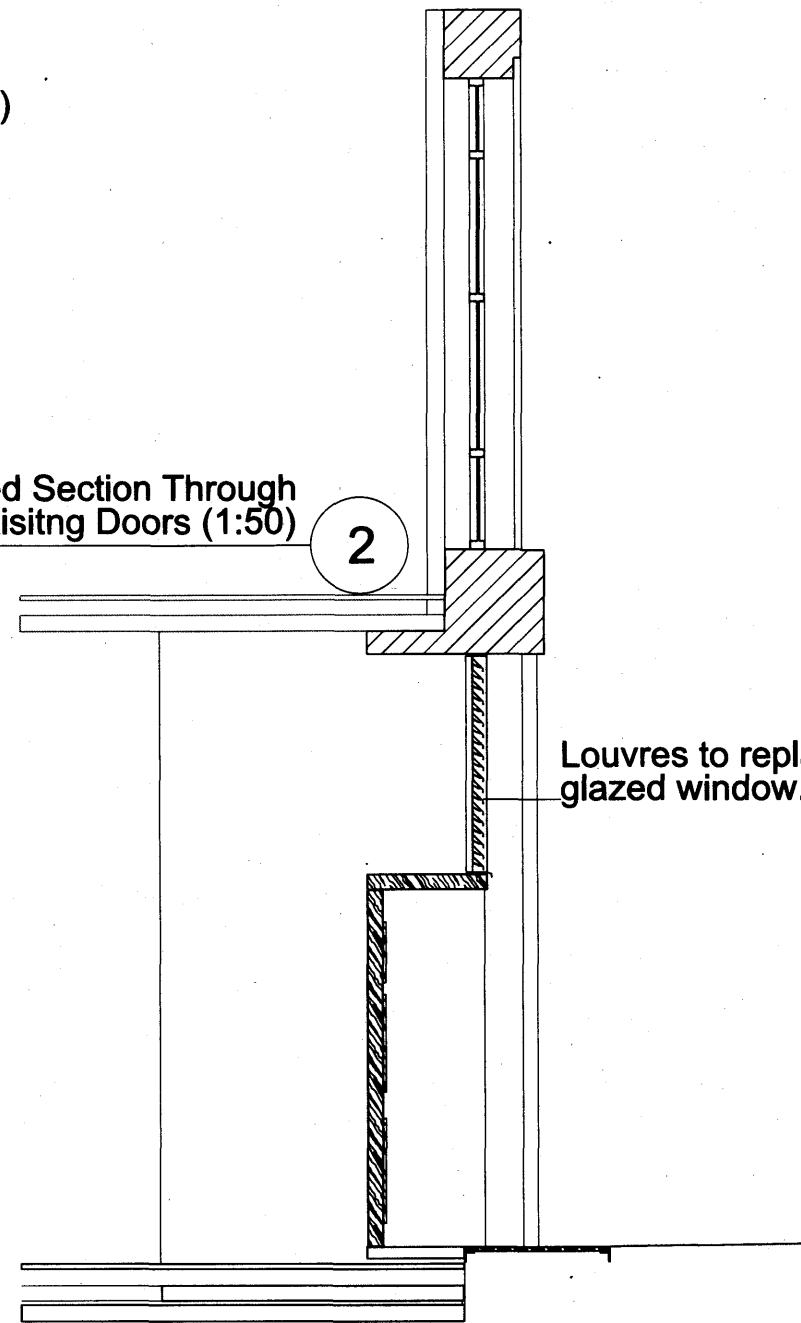


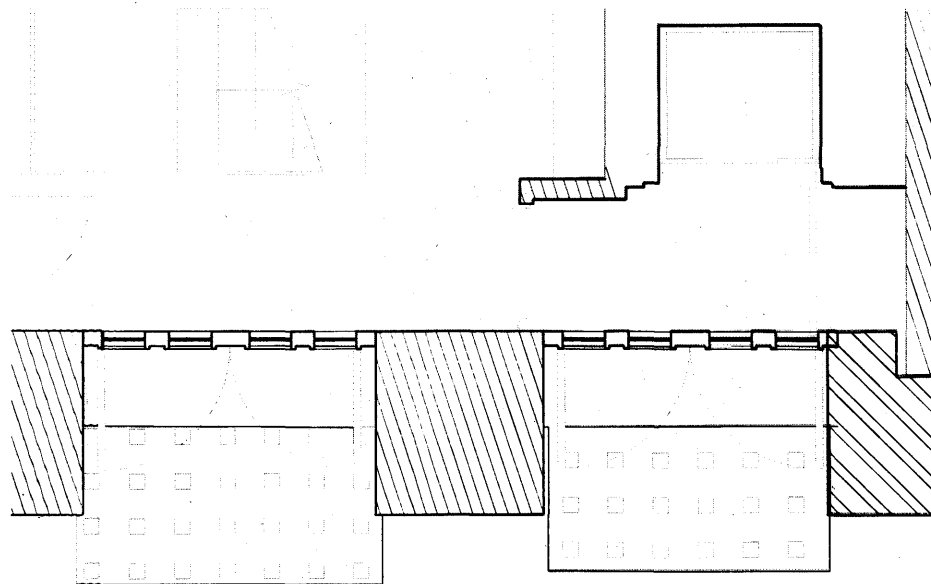
1 Proposed Typical Louvered Panels Over Existing Doors (1:50)

Louvres to replace existing glazed window.

Proposed Section Through Louvered Panels Over Existing Doors (1:50)



Louvres to replace existing glazed window.



3 Proposed Plan Over Existing Doors (1:50)

REV.	DESCRIPTION	DATE	DRN BY	CKD BY

PROJECT	AFRICA HOUSE	JOB No.	4215	DRAWING No.	L(0)132	REVISION	/
TITLE	LOUVRES OVER DOORS - EAST ELEVATION	SCALE	1:50	DRAWN BY	IC	CHECKED BY	MA
CLIENT	DAEJAN INVESTMENTS (GROVE HALL) LIMITED	STATUS	-	DATE	29.11.2011		

**jmarchitects**

2nd Floor  
Threeways House  
40-44 Clipstone Street  
London  
W1W 5DW

T: 0207 580 5330  
F: 0207 436 5348  
lon@jmarchitects.net  
www.jmarchitects.net