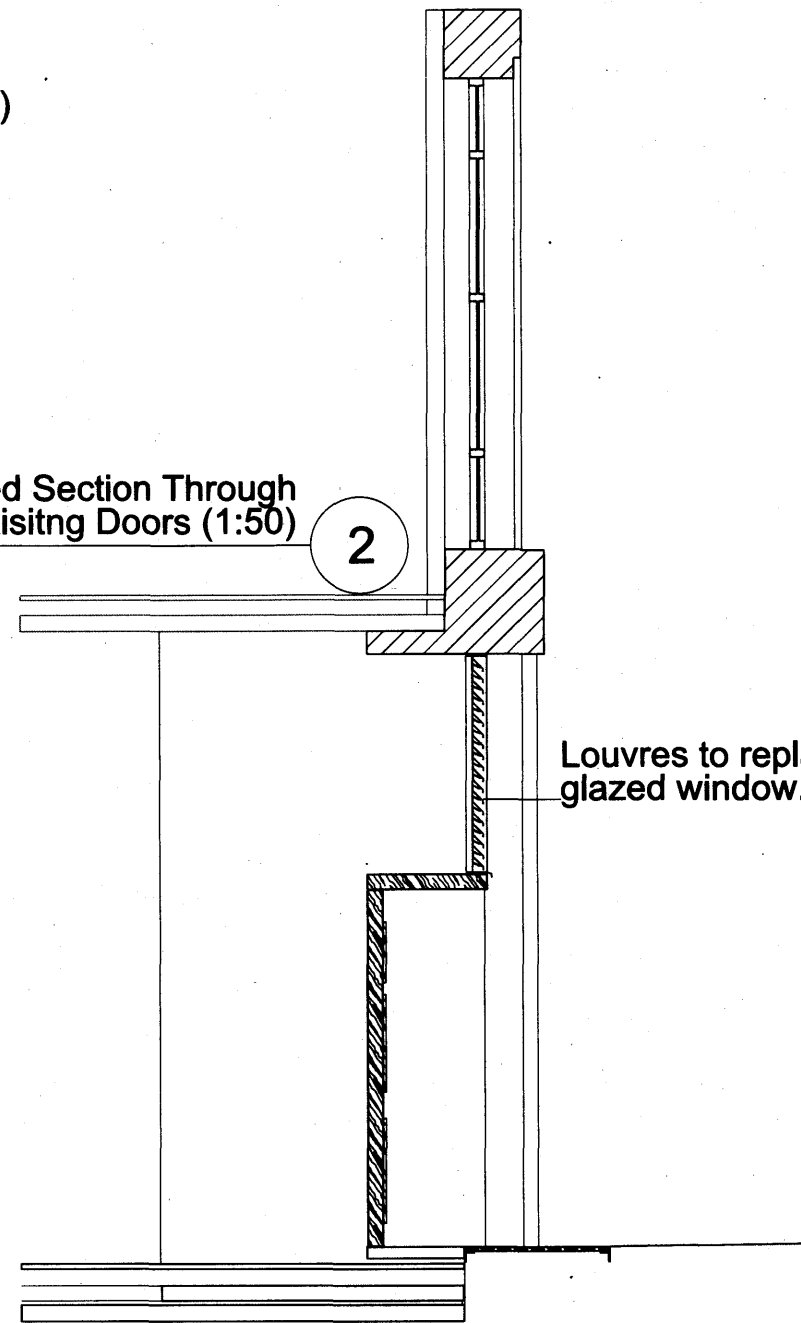


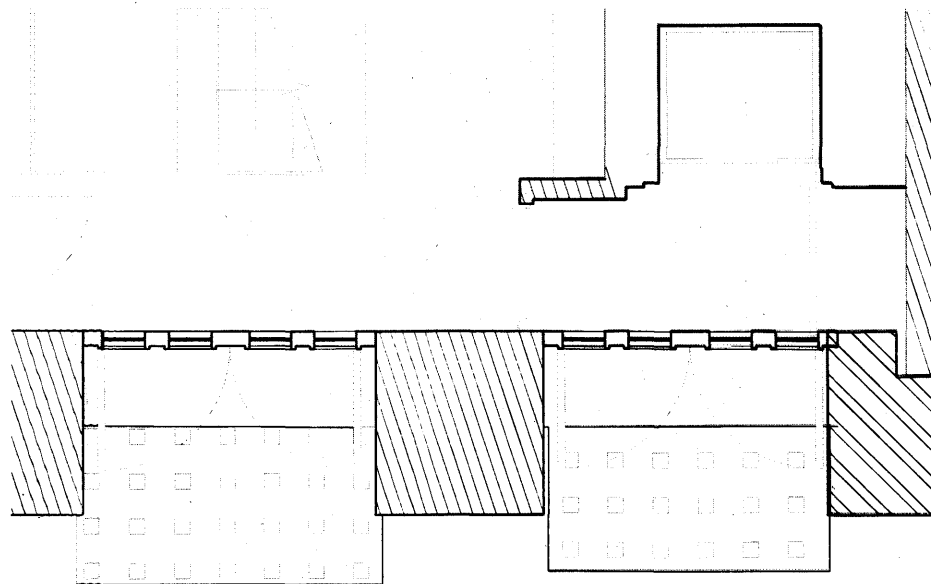
1 Proposed Typical Louvered Panels Over Existing Doors (1:50)

Louvres to replace existing glazed window.



Proposed Section Through Louvered Panels Over Existing Doors (1:50)

Louvres to replace existing glazed window.



3 Proposed Plan Over Existing Doors (1:50)

REV.	DESCRIPTION	DATE	DRN BY	CKD BY

PROJECT	AFRICA HOUSE	JOB No.	4215	DRAWING No.	L(0)132	REVISION	/
TITLE	LOUVRES OVER DOORS - EAST ELEVATION	SCALE	1:50	DRAWN BY	IC	CHECKED BY	MA
CLIENT	DAEJAN INVESTMENTS (GROVE HALL) LIMITED	STATUS	-	DATE	29.11.2011		

jmarchitects

2nd Floor
Threeways House
40-44 Clipstone Street
London
W1W 5DW

T: 0207 580 5330
F: 0207 436 5348
lon@jmarchitects.net
www.jmarchitects.net