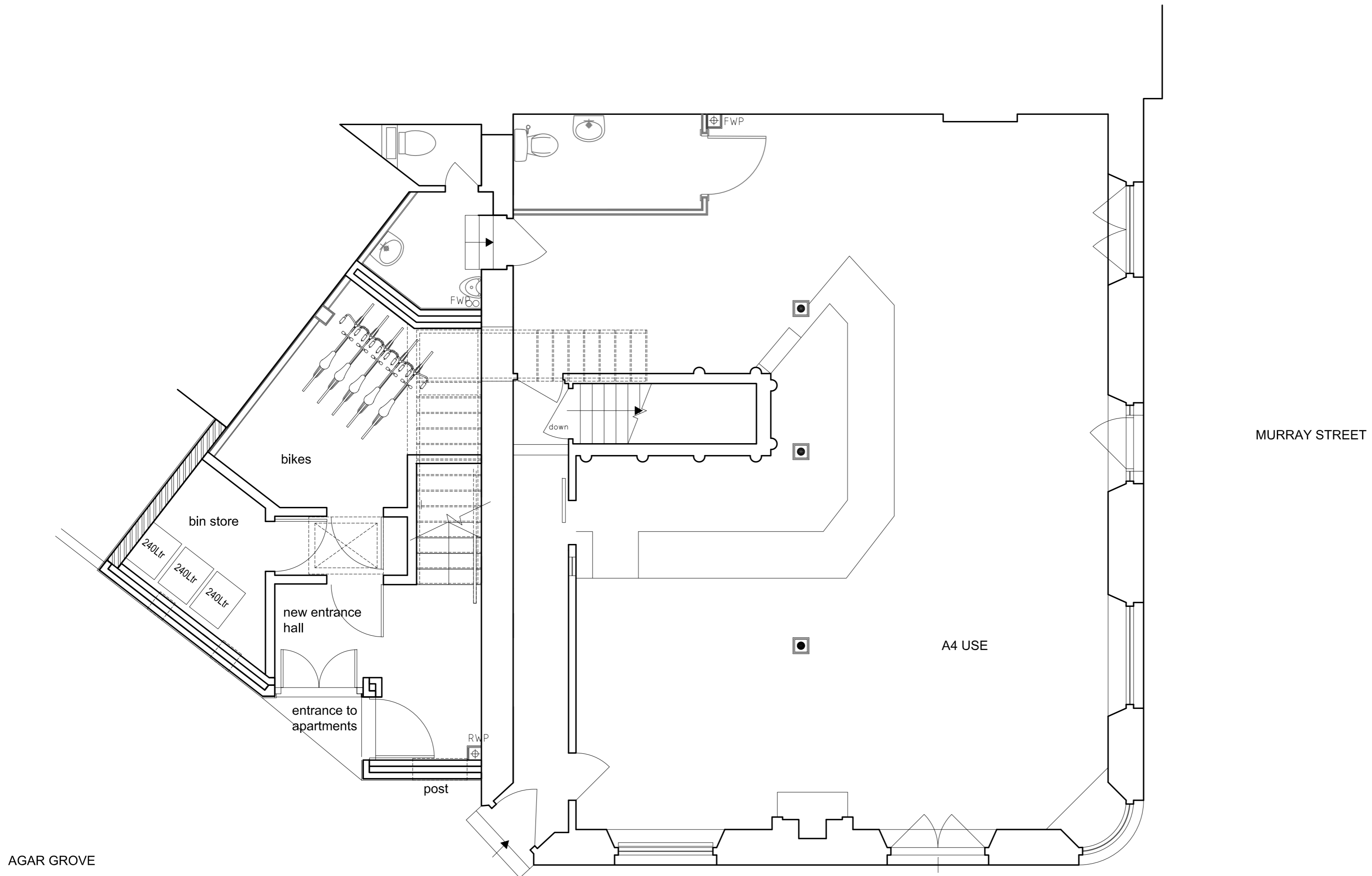


GF

A4 use  
GEA 135.24 m2  
GIA 114.59 m2

Residential  
GEA 33.19 m2  
GIA 27.14 m2



MURRAY STREET

AGAR GROVE



rev. D 14.11.11 General revision  
 rev. C 14.10.11 General revision  
 rev. B 13.09.11 General revision  
 rev. A 19.08.11 General revision

PLANNING

WELLINGTON PUB COMPANY LTD  
 Murray Arms  
 25 Agar Grove, London NW1 9SL  
 PROPOSED GROUND FLOOR PLAN

SCALE 1:50 @ A2

June 2011

DWG GA/02D

**antonia infanger**  
 architecture+interior

Stirling House 9 Burroughs Gardens  
 London NW4 4AU, mobile 0795 7261672

PLEASE DO NOT SCALE OF DRAWING. IF IN DOUBT ASK  
 DRAWINGS TO BE READ IN CONJUNCTION WITH  
 ALL RELEVANT DOCUMENTS, SPECIFICATIONS AND OTHER  
 DOCUMENTS PROVIDED BY THE ARCHITECT AND ENGINEERS.  
 REFER ALL DISCREPANCIES TO ARCHITECT.

1 GROUND FLOOR PLAN  
 GA 02 1:50 @ A2