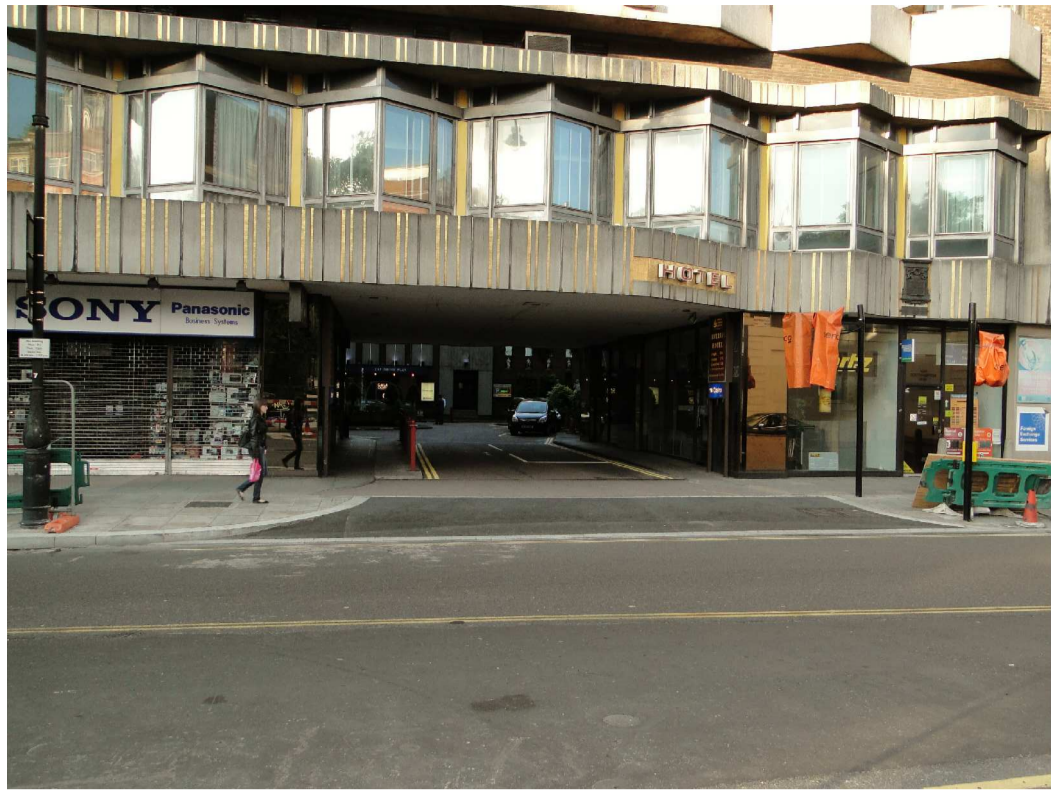


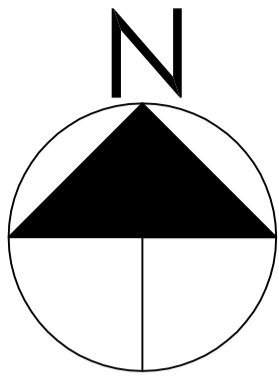
this drawing remains the property of fisch design limited and duplication of this drawing in whole or any part is strictly forbidden without prior written permission from fisch design ltd

all structural alterations are to be approved by a structural engineer

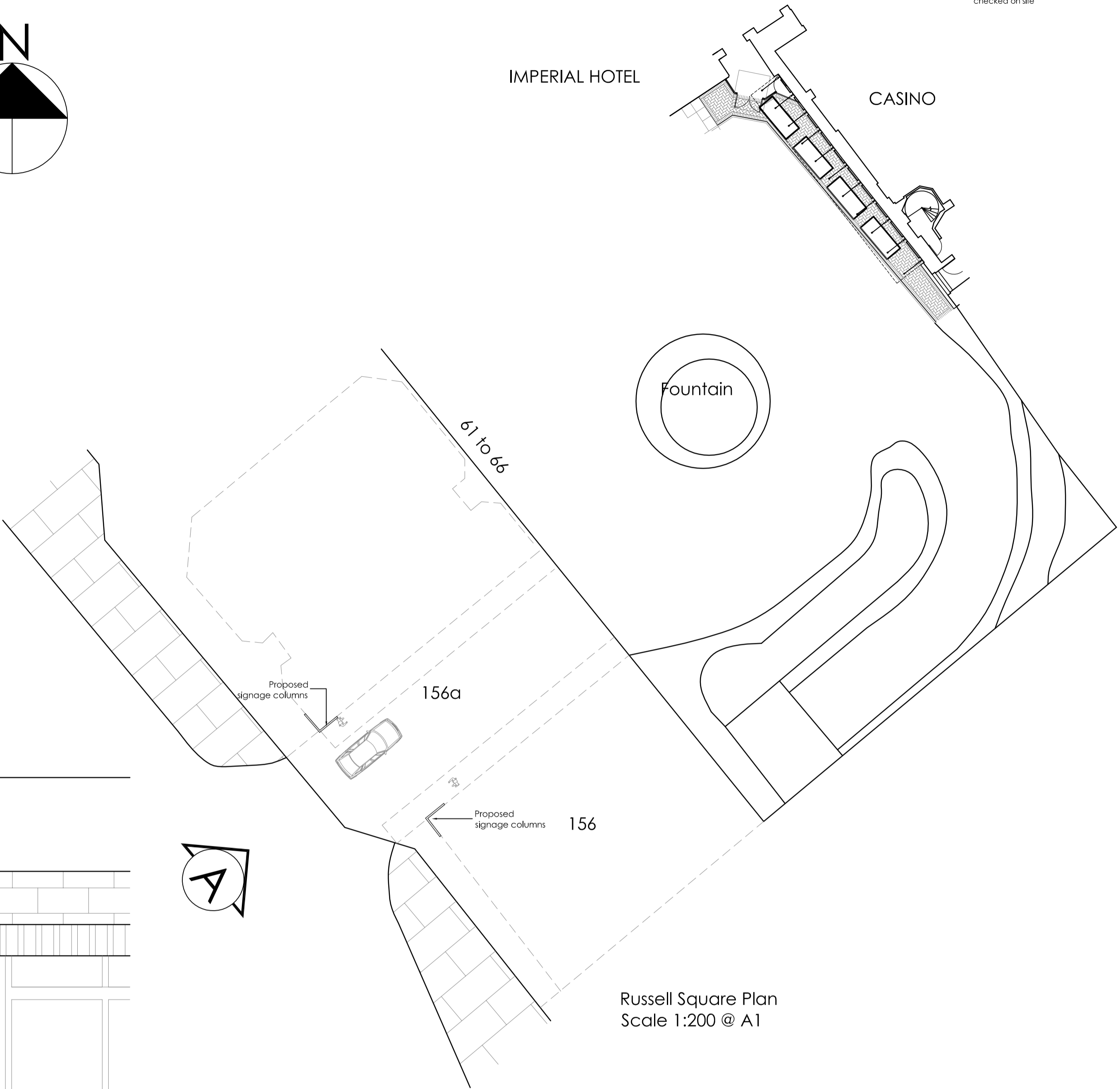
do not scale from this drawing, all dimensions to be checked on site



Photographs of Existing Russell Square Elevation

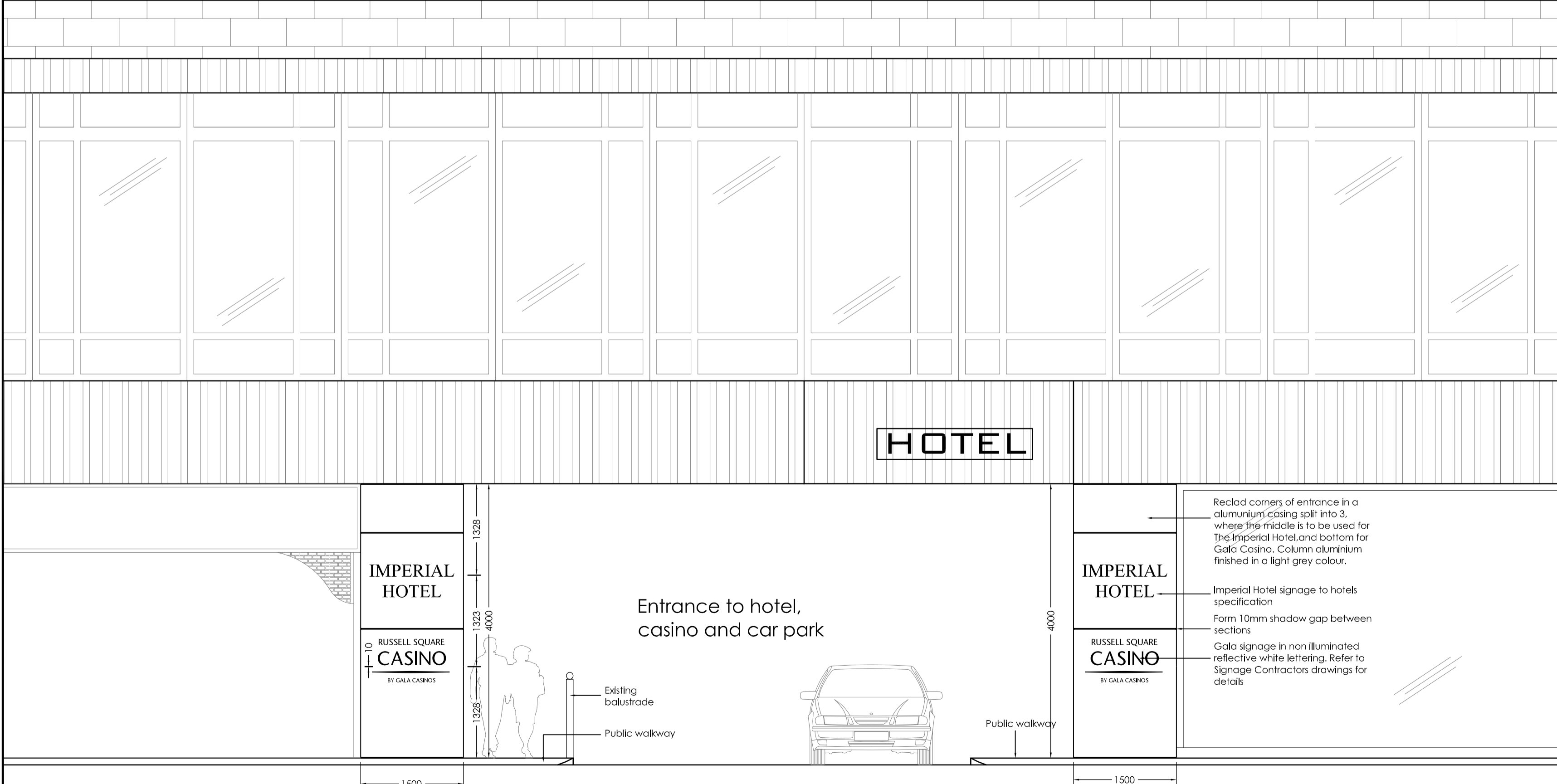


RUSSELL SQUARE



Russell Square Plan
Scale 1:200 @ A1

IMPERIAL HOTEL



Proposed Russell Square Elevation A

Reclad corners of entrance in a aluminium casing split into 3, where the middle is to be used for The Imperial Hotel and bottom for Gala Casino. Column aluminium finished in a light grey colour.

Imperial Hotel signage to hotels specification

Form 10mm shadow gap between sections

Gala signage in non illuminated reflective white lettering. Refer to Signage Contractors drawings for details

INDICATIVELY DRAWN FROM PHOTOGRAPHS AND WILL NEED A SITE SURVEY. FOR SIGNAGE VISUALS REFER TO FISCH PDF DOCUMENT: RUSSELL SQUARE_SIGNAGE PROPOSAL

A 22.09.11 ML - Column finishes and detail amended.

Planning

dwg no: 617-PL02 revision: A

client: Gala Coral Group Ltd

project: Russell Square Casino
The Imperial Hotel
61-66 Russell Square
London, WC1B 5BA

title: Proposed Russell Square Elevation

origin: ML checked: 02.09.11
scale: 1:50/200 A1 date: 02.09.11

fisch

fisch design ltd unit 3 heritage business centre derby road belper de56 1sw
t: +44 (0) 1773 826222 f: +44 (0) 1773 826327
mail@fischdesign.co.uk www.fischdesign.co.uk