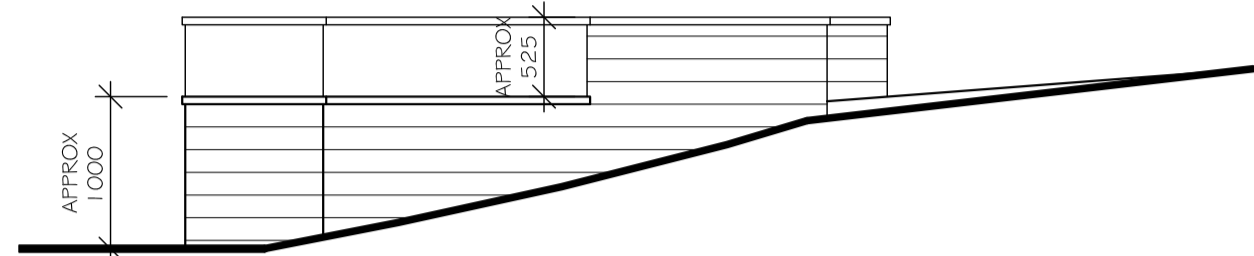
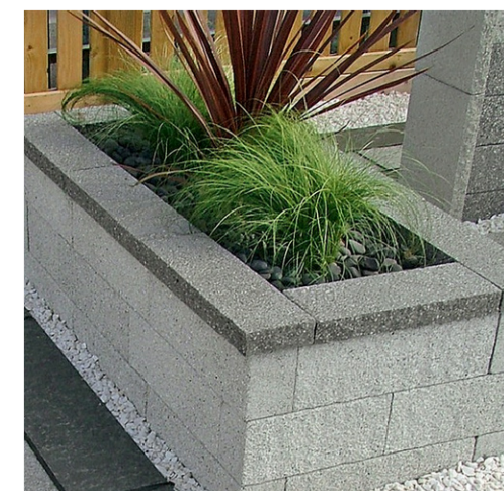


WALL TO BE FINISHED USING MARSHALLS ARGENT BLOCKS AND CAPPED WITH MARSHALLS ARGENT COPINGS. SEE IMAGE RIGHT.

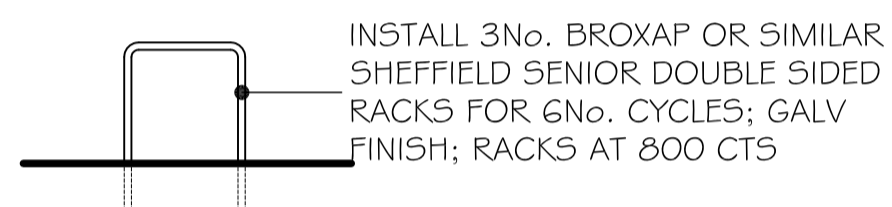
**PLANTER WALL - ELEVATION A**  
1:50



**PLANTER WALL - ELEVATION B**  
1:50



**MARSHALLS ARGENT WALLING**



**CYCLE STAND ELEVATION**  
1:50

**BOUNDARY RETAINING WALL**

EXISTING TARMAC SURFACED CAR PARK TO REMAIN

ADMIN BLOCK  
ground FFL. 102.443

EXISTING ESCAPE STAIR TOWER & CHIMNEY TO BE CLAD IN HORIZONTAL TIMBER & POWDER COAT ALUMINIUM PANELS

EXISTING TARMAC SURFACED CAR PARK TO REMAIN

BRICK PLANTER REMOVED & TARMAC SURFACED

EXISTING BRICK RETAINING WALLS REMOVED AND REPLACED WITH NEW STONE PLANTERS WITH MATCHING COPINGS

INSTALL 3No. CYCLE RACKS. SEE ABOVE FOR DETAILS

NEW SOFT LANDSCAPING TO EXISTING BORDER AS DRG JBA 11/380-01

EXTENT OF NEW CANOPY OVER

FEATURE PAVING TO ENTRANCE AREA INCORPORATING FLOOR MOUNTED UPLIGHTERS TO ILLUMINATE NEW CANOPY

STEPPED PLANTERS TO RECEIVE SOFT LANDSCAPING AS DETAILED ON DRG JBA 11/380-01

FLOODLIGHTING LOCATED IN SOFT LANDSCAPED PLANTER TO ILLUMINATE ADJACENT STAIR TOWER

THE ROYAL SCHOOL  
(6 STOREY)  
ground FFL. 101.170

GRASSED AREA

EXISTING PLAYGROUND

EXISTING STEEL VEHICLE & PEDESTRIAN ENTRANCE GATES

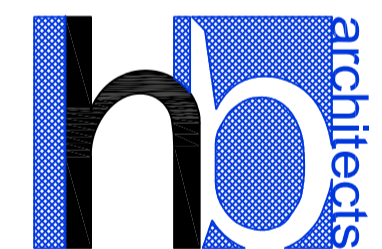
VANE CLOSED SITE ENTRANCE

Approx 4.4m

YELLOW ROAD LINING CROSS HATCHED TO DESIGNATE PEDESTRIAN ROUTE

1200mm HIGH BARRIER

Approx 1.6m



- The Triforium  
17 Warwick Street  
Warwickshire  
CV21 3DH  
Tel: (01788) 576137  
Fax: (01788) 541328
- Architecture
- Interiors
- Planning
- Computer Graphics
- Project Management
- CDM Co-Ordinators

Revision: C - 16/12/2011 - Boundary line amended  
Revision: B - 12/12/2011 - Notes amended and cycle stand details added in line with Planning Consultants requirements  
Revision: A - 09/12/2011 - Planter wall elevations added; Relocated cycle stand added

COGNITA SCHOOLS Ltd.  
THE ROYAL SCHOOL,  
HAMPSTEAD  
PROPOSED SPORTSHALL

**PROPOSED SITE LAYOUT**

Drawn:	DAVE BOX
Date:	04/04/2011
Scale:	1:100 @ A1
Dwg No.:	R63:11:P10C