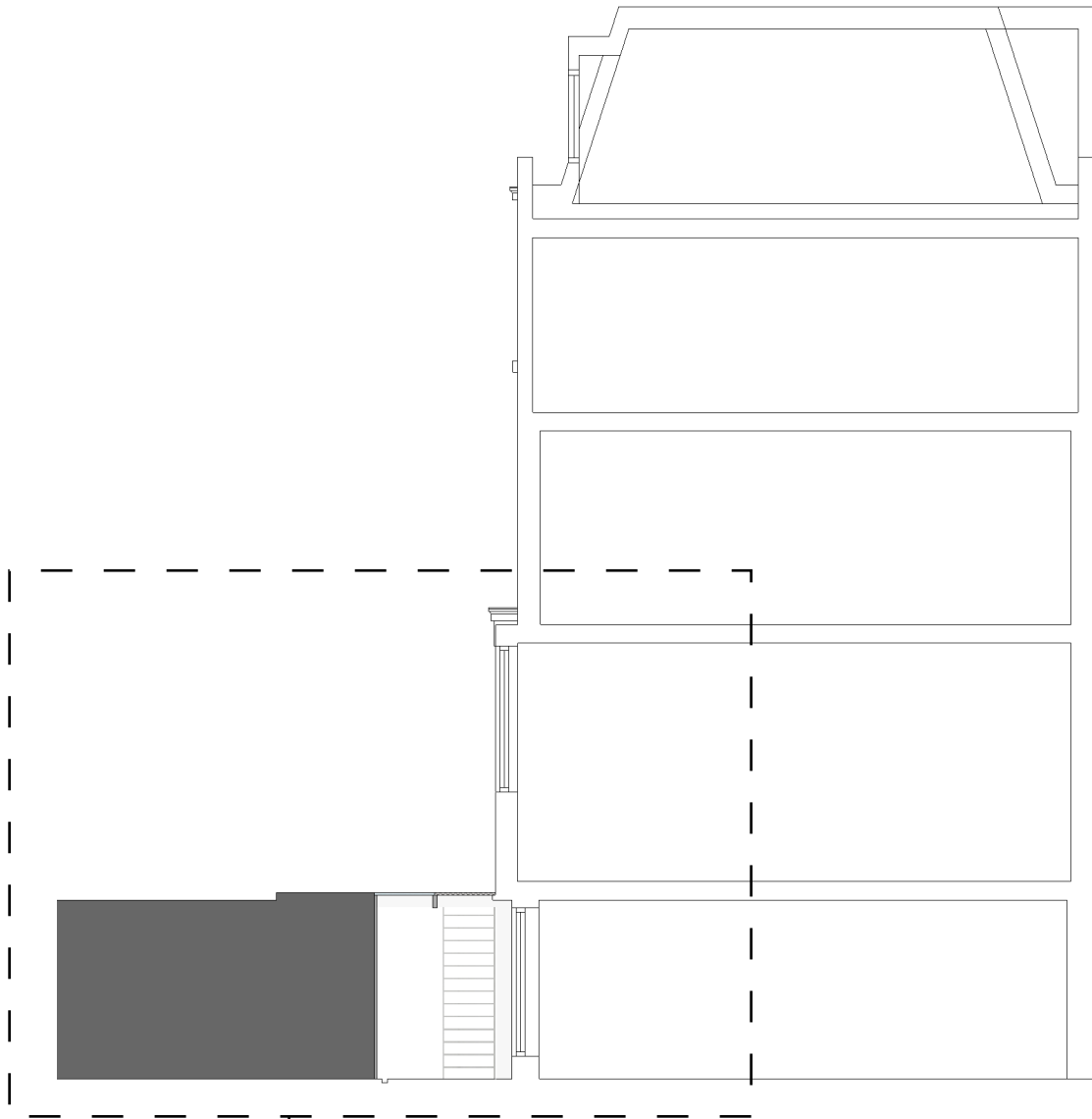
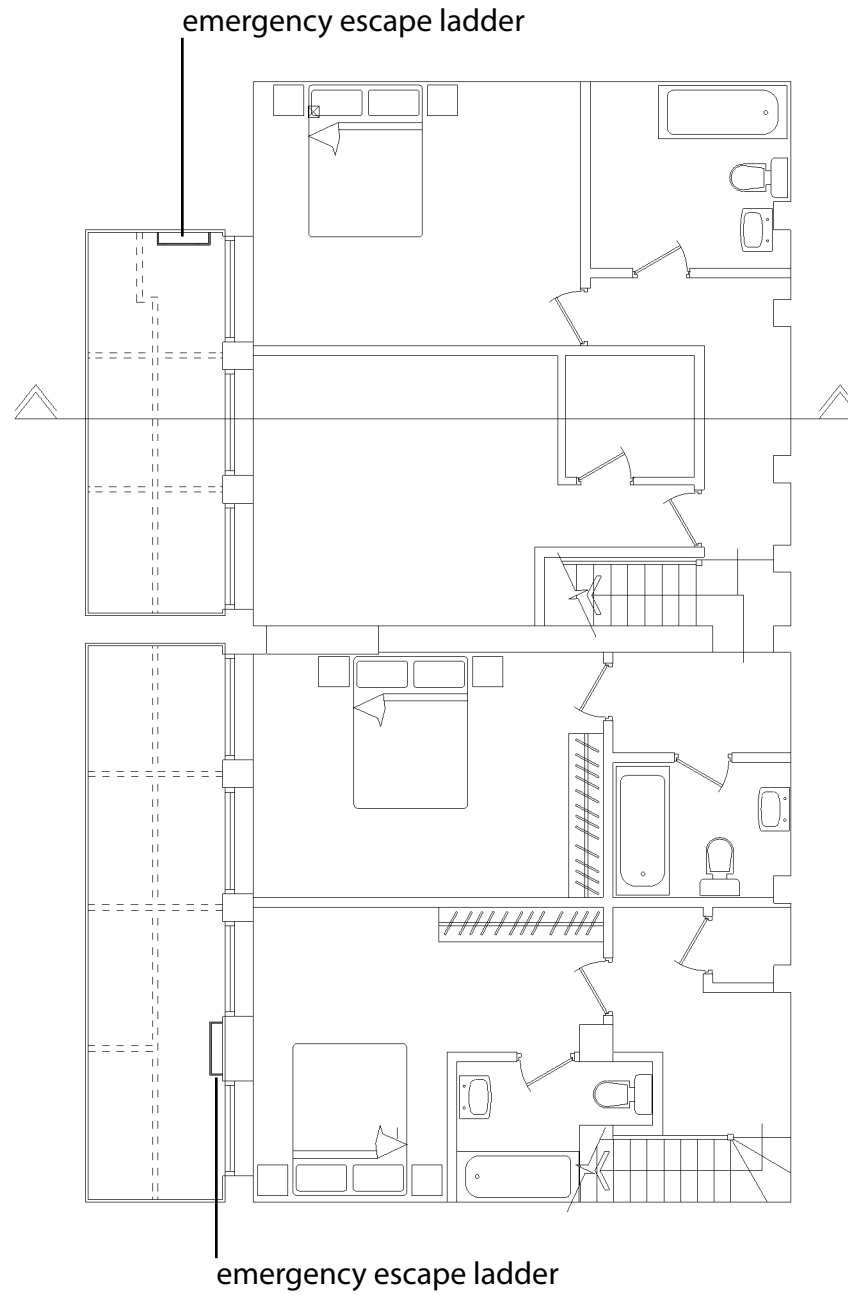


### Proposed section



for section close-up cf. drawing  
Plender/73/AC/Lightwells/2

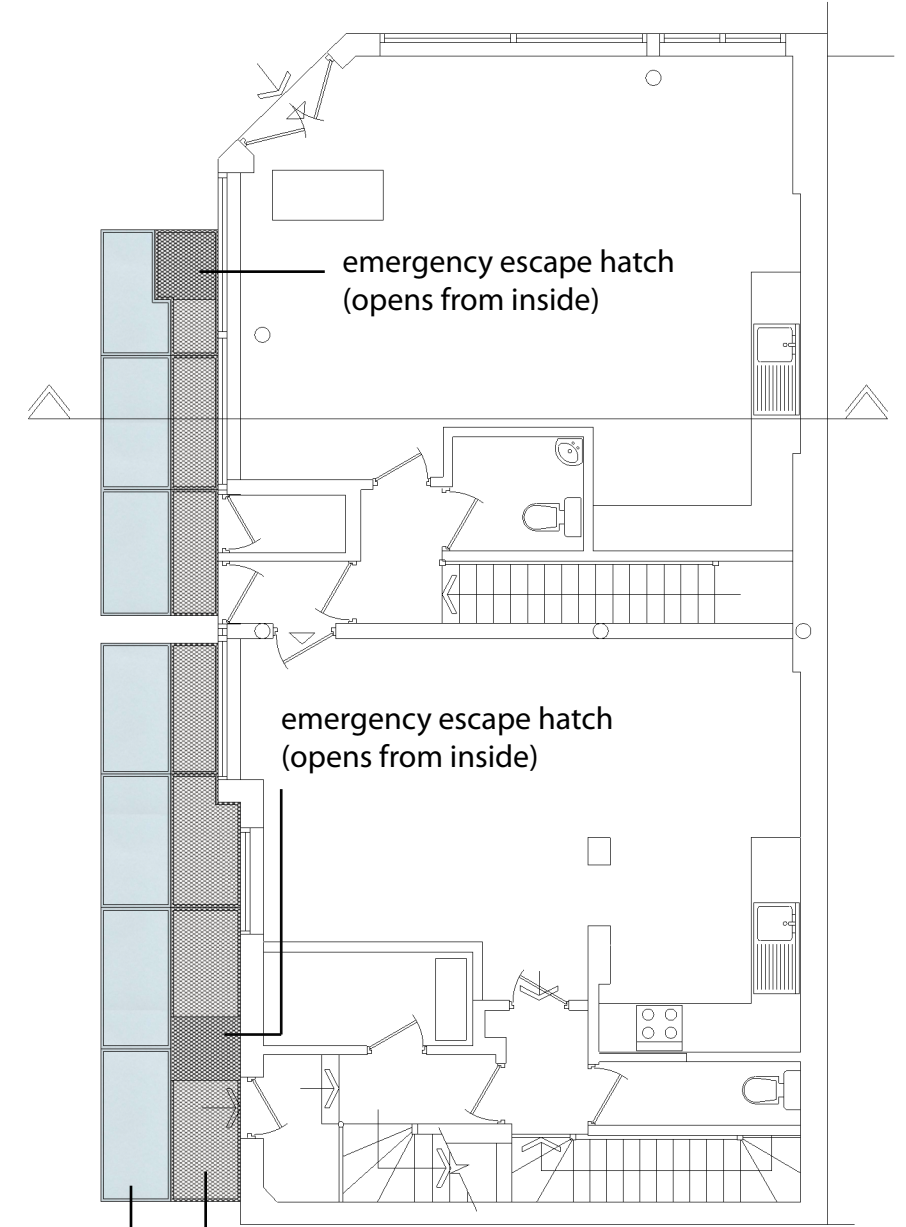
### Proposed basement plan



emergency escape ladder

emergency escape ladder

### Proposed ground floor plan



emergency escape hatch  
(opens from inside)

emergency escape hatch  
(opens from inside)

horizontal mesh grill,  
cast iron with circular perforations (flush with pavement)

32 mm toughened, opaque walk-on glass  
sandblasted for anti-slip (flush with pavement)

Project Title	Job Title	Drawing Title	Date	Scale	Drawn by	Drawing No.	Rev.
73 Plender Street	Approval of conditions	Proposed light well (Plans and section)	19.12.11	1:100 @ A3	GC	Plender/73/AC /LIGHTWELLS/1	