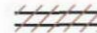







Notes:

- Keep all existing windows
- Retain existing structure apart from shown hatched

KEY

-  G.03 - Removed partitions & brickwork
-  New brickwork
-  Structural element removed
-  Timber boarding removed
- ① Refer to photograph survey sheets no 1090/1 - 6

RECEIVED
01 DEC 2011

A: 29/11/2011 - Colour annotation added, notes amended & cross referenced with impact assessment and alterations schedule
revisions

Issue:

Job

St Martin Church Hall
London NW5

Drawing

First Floor Plan_As Existing
Stripping out

Scale
1:100@A3

Date
July 2011

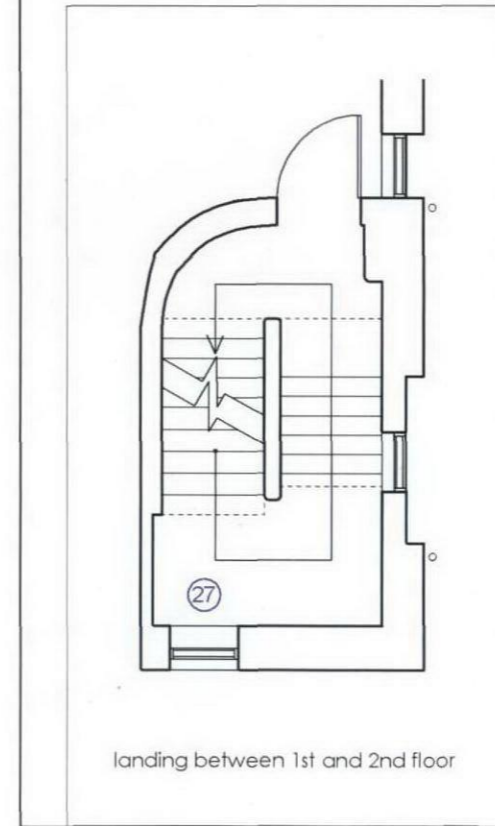
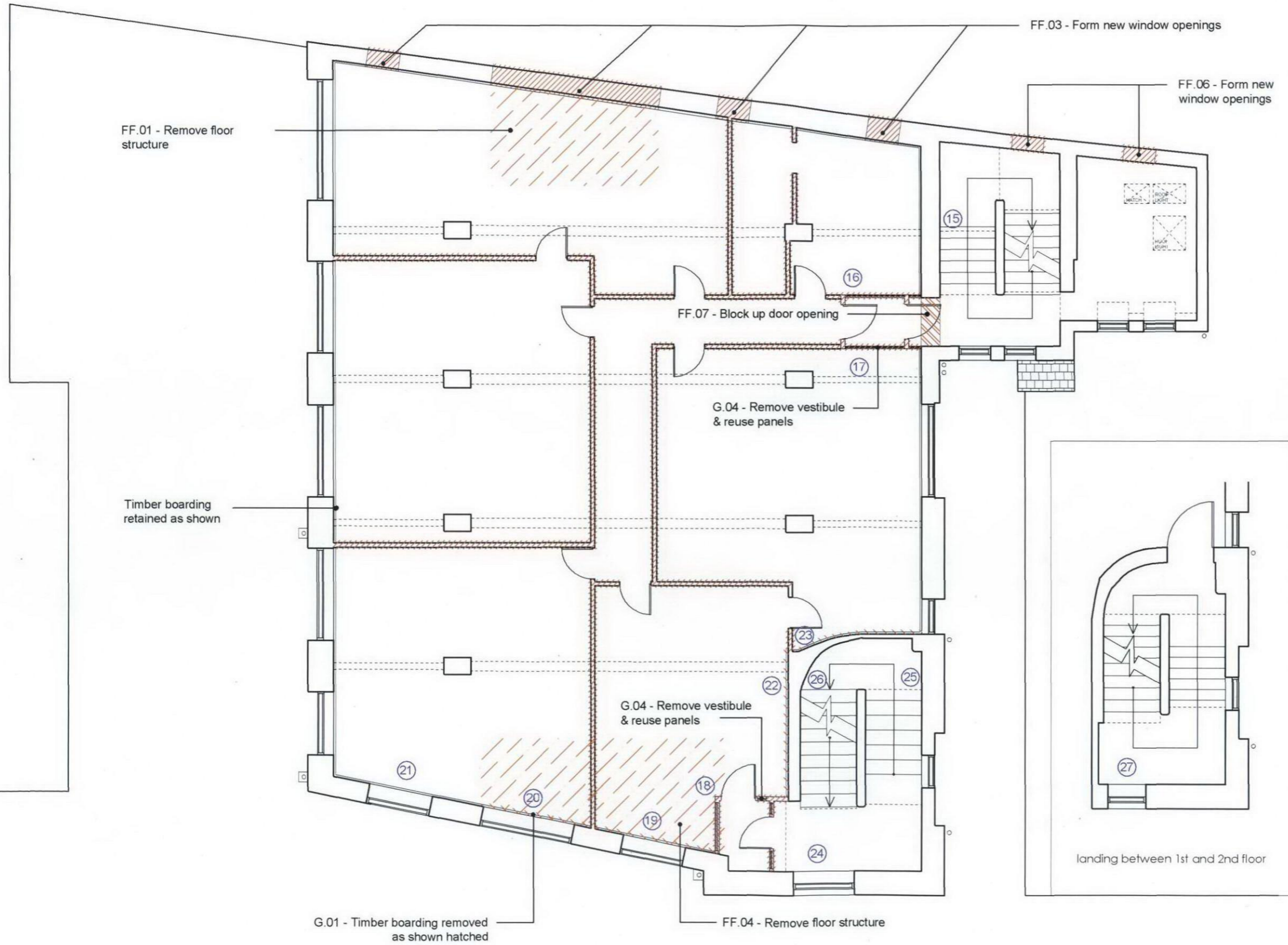
Drawing No.
1090/11-102

Revision
A

INHOUSE
DESIGN ASSOCIATES
ARCHITECTS

12 blackstock mews, LONDON N4 2BT

T +44(0)20 73595044 E info@inhousearchitects.co.uk
F +44(0)20 73543602 W www.inhousearchitects.co.uk



landing between 1st and 2nd floor