

# PLANNING CONDITIONS

15-17 MACKLIN STREET  
DECEMBER 2011



## CONDITION 2

- The details of the glass material to be used on the roof extensions shall not be otherwise than as those submitted to and approved by the Council before any work is commenced on the relevant part of the development. The relevant part of the works shall not be carried out otherwise than in accordance with the details thus approved and maintained there after.

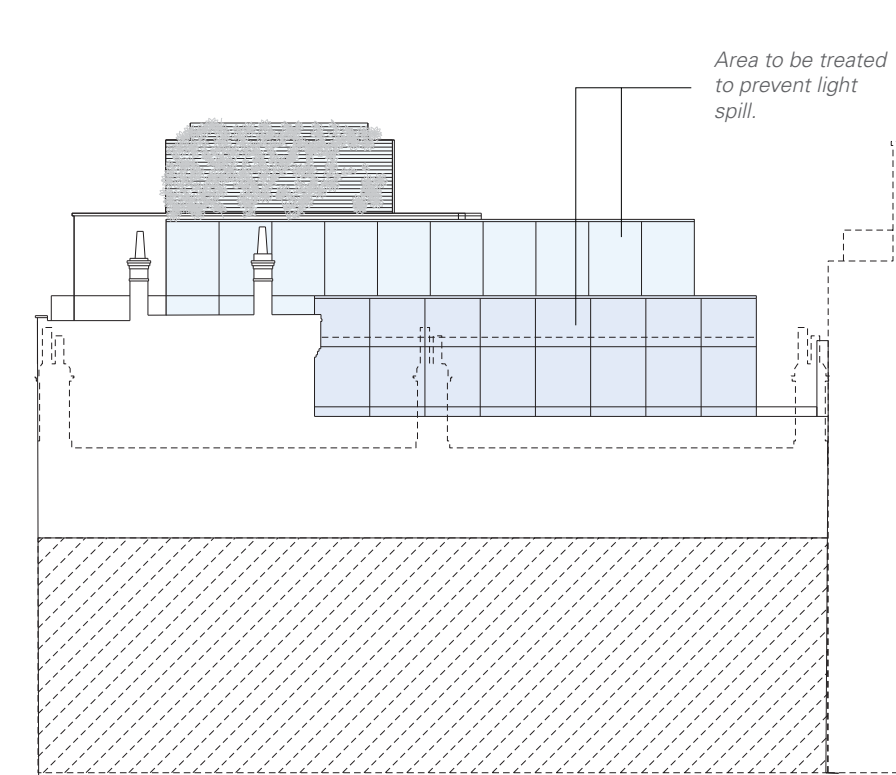
A solar controlled film will be applied internally.  
The film proportions are specifically designed to prevent light emittance.  
Performance data as follows:

Total Solar Energy Rejected	55%
Solar Energy Reflected	29%
Solar Energy Absorbed	38%
Solar Energy Transmitted	33%
Visible Light Transmitted	46%
Visible Light Reflected	27%
Ultra Violet Light rejected	95%
Shading Coefficient	0.50
Solar Heat Gain Coeff. (g Value)	0.44
Emissivity	0.74
Glare Reduction	48%

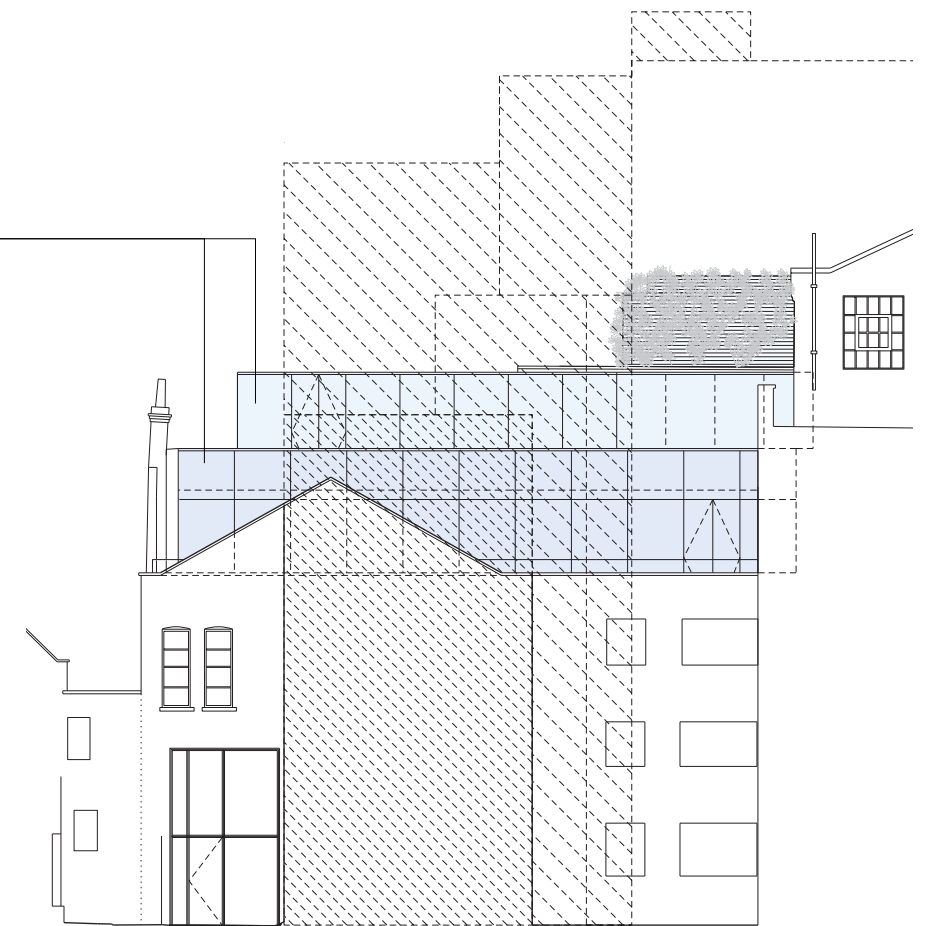
Please find glazing sample enclosed



South Elevation  
(APPENDIX 400)



East Elevation  
(APPENDIX 401)

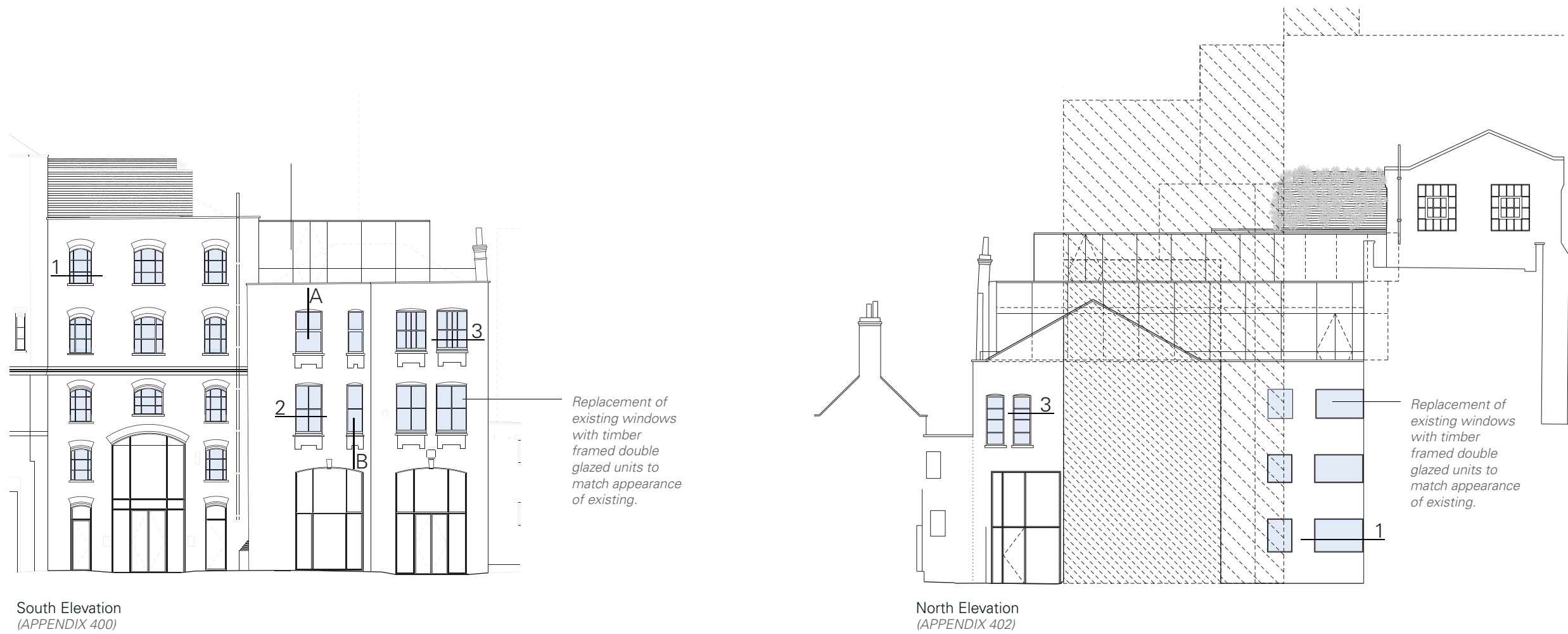


North Elevation  
(APPENDIX 402)

# CONDITION 8A

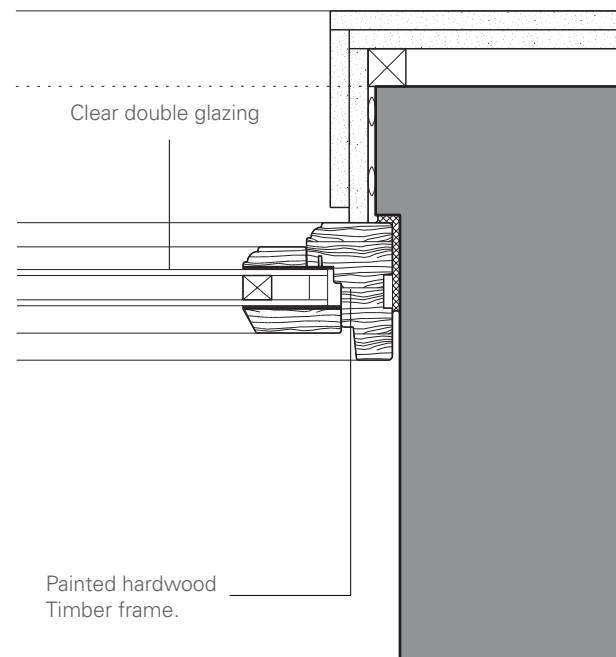
Detailed drawings, or samples of materials as appropriate, in respect of the following, shall be submitted to and approved in writing by the Council before the relevant part of the work is begun:

a) Plan, elevation and section drawings of all new window and door openings.

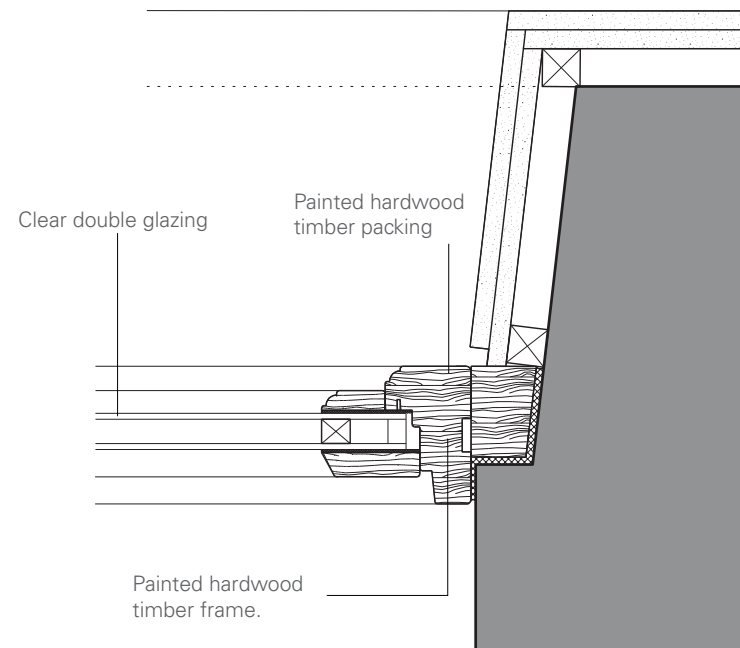


# CONDITION 8A

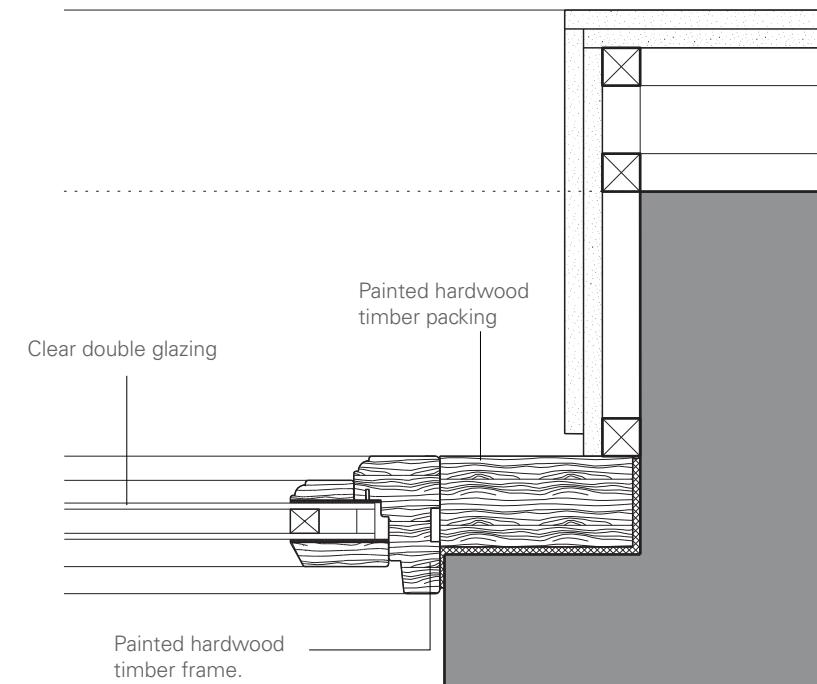
Typical Timber Framed Window Jamb Details. -  
Horizontal Sections (Plan)



1. Typical jamb detail



2. Typical jamb detail



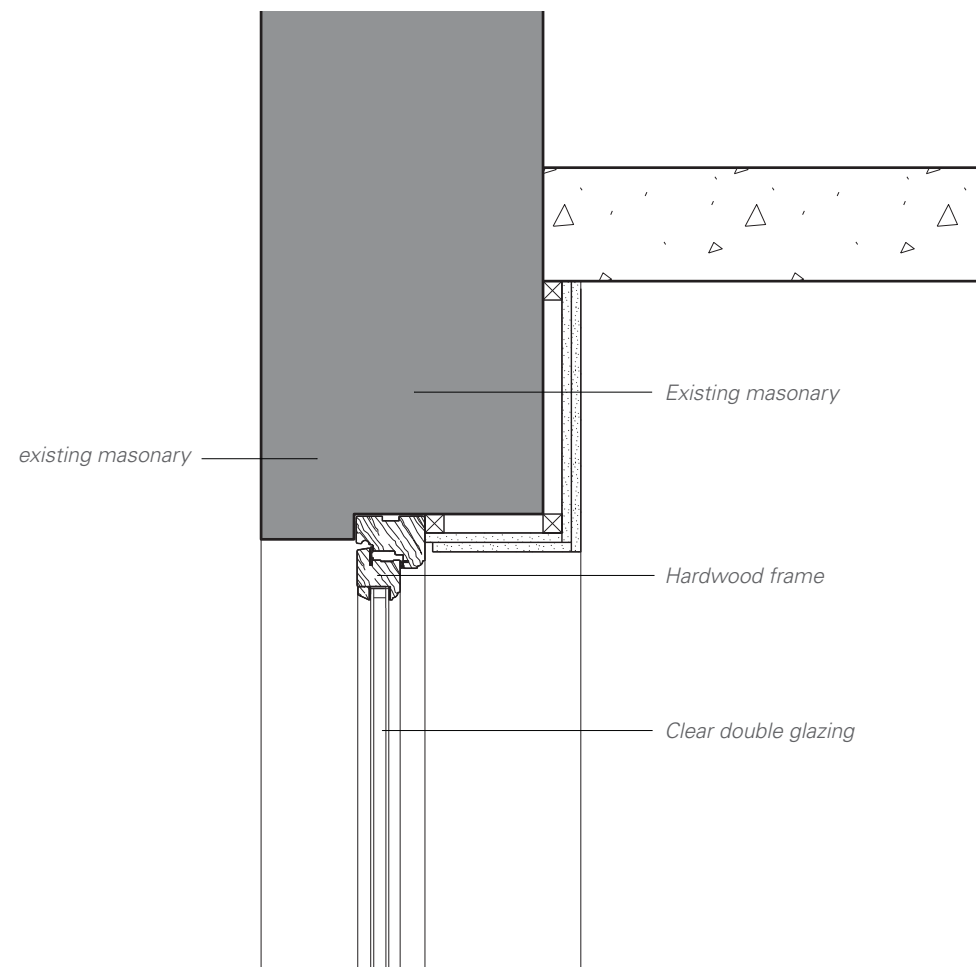
3. Typical jamb detail

Typical Timber Framed Window Jamb Details -

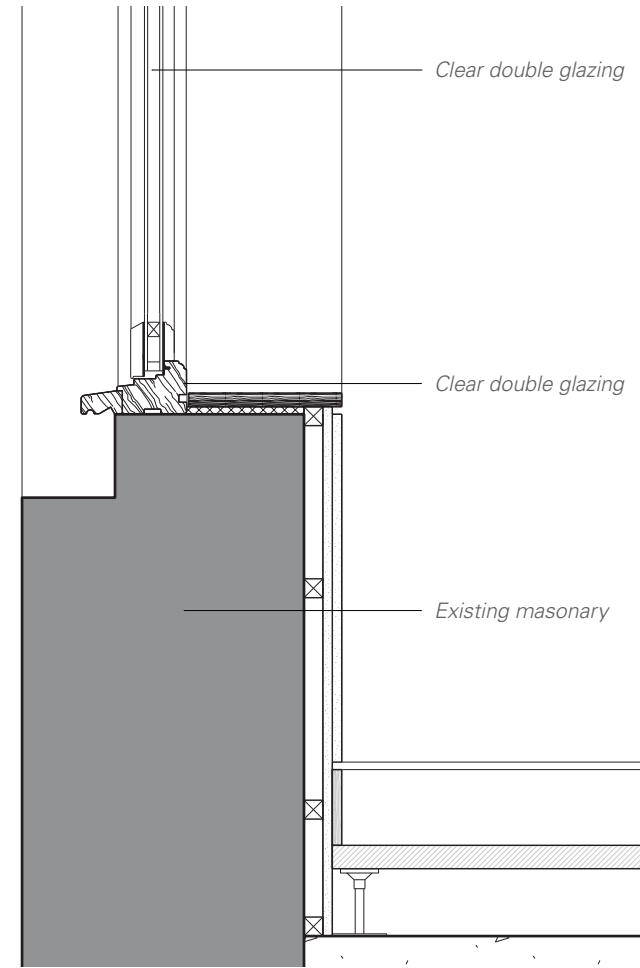
Replacement of existing windows with timber framed  
double glazed units to match appearance of existing.

# CONDITION 8A

Typical Timber Framed Window Details -  
Header and Cill Sections



A -Typical Header Detail



B-Typical cill detail



Image of existing window - Proposed timber framed clear double glazed units to match.

# CONDITION 8A

*Typical ground floor glazing.*

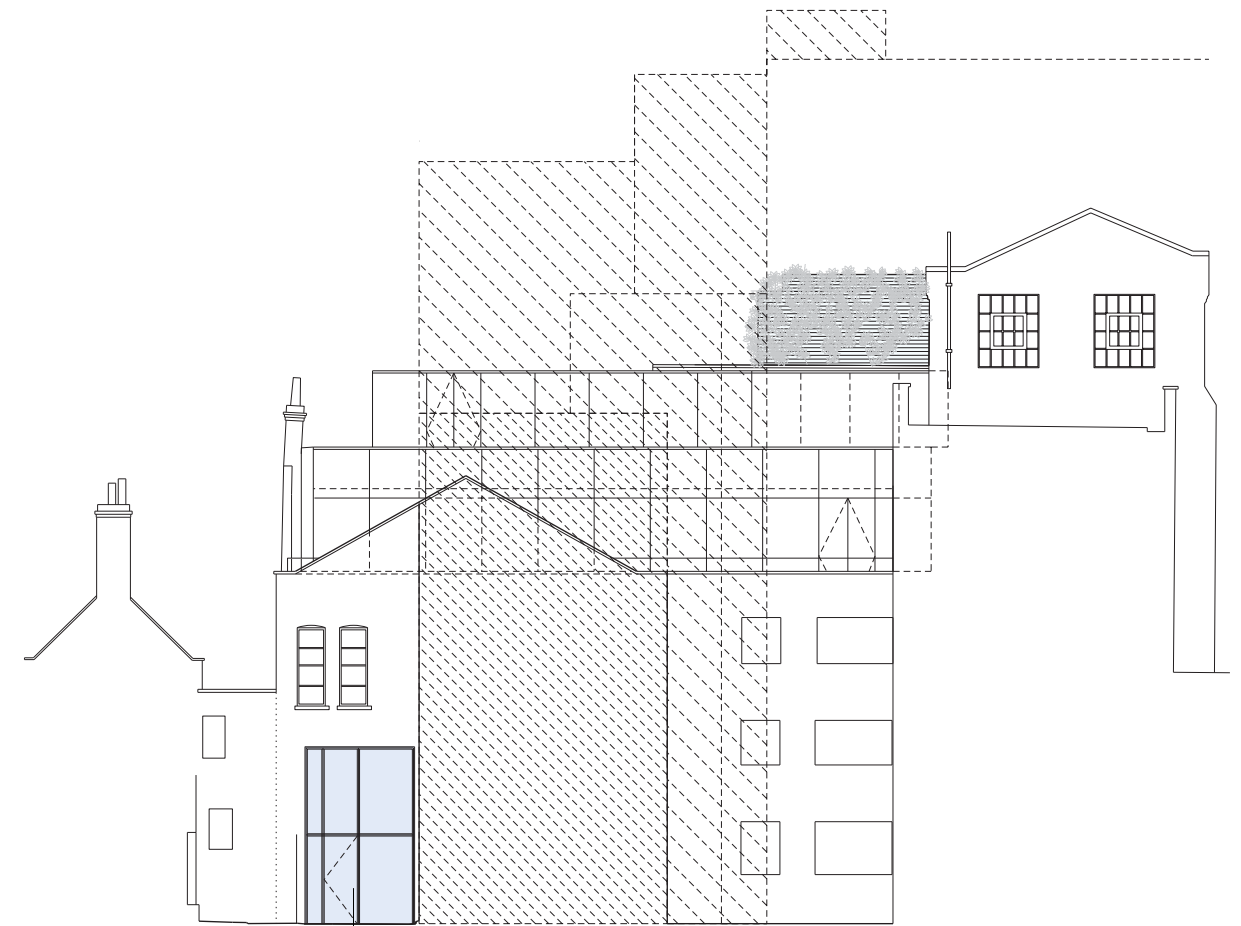


South Elevation  
(APPENDIX 400)

*New frameless clear double glazed doors in existing arch.*

*New frameless Clear double glazing in new brick arch to match adjacent*

*New frameless clear double glazed doors in existing arch.*



North Elevation  
(APPENDIX 402)

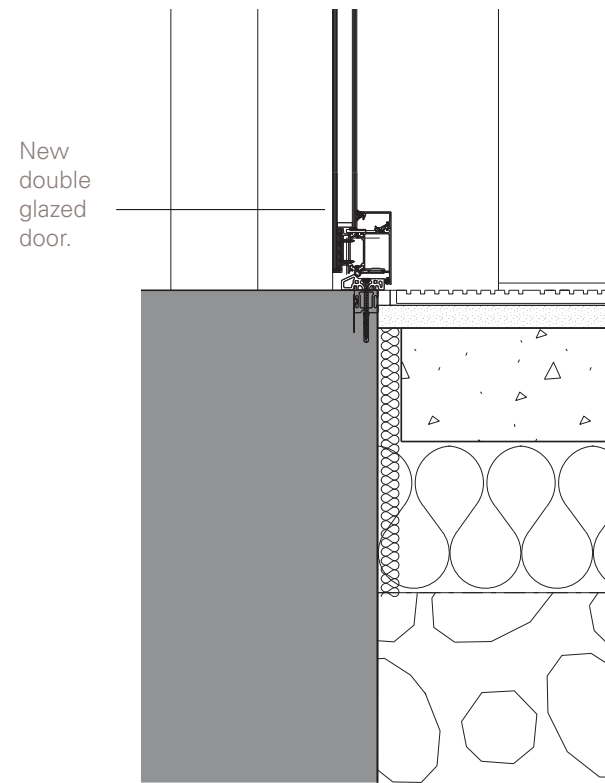
*New frameless clear glazed doors in existing Arch.*

Key:

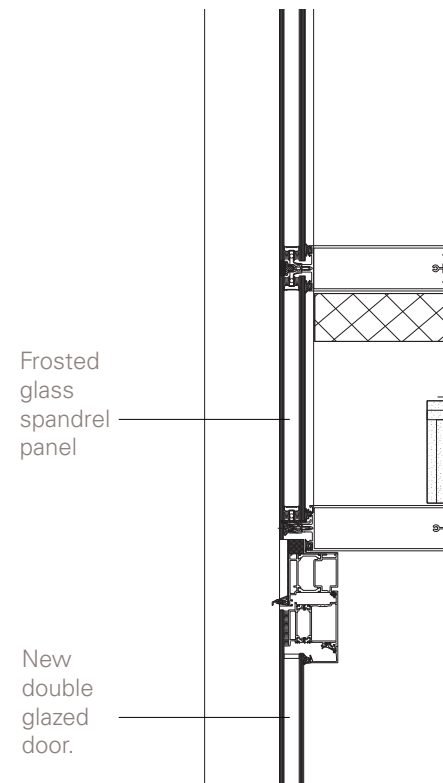
**A** Typical Details (See Following pages)

# CONDITION 8A

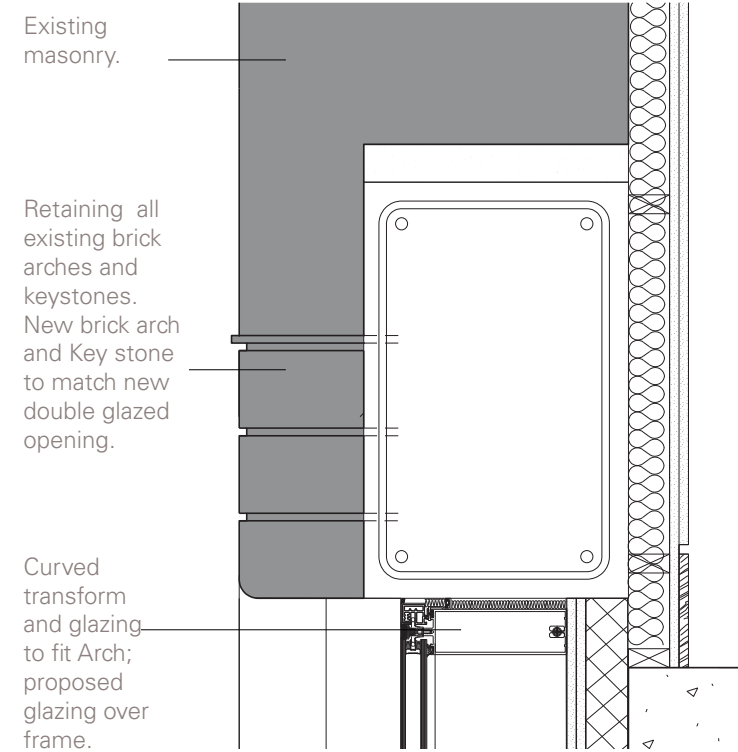
Typical ground floor glazing - Detailed Sections



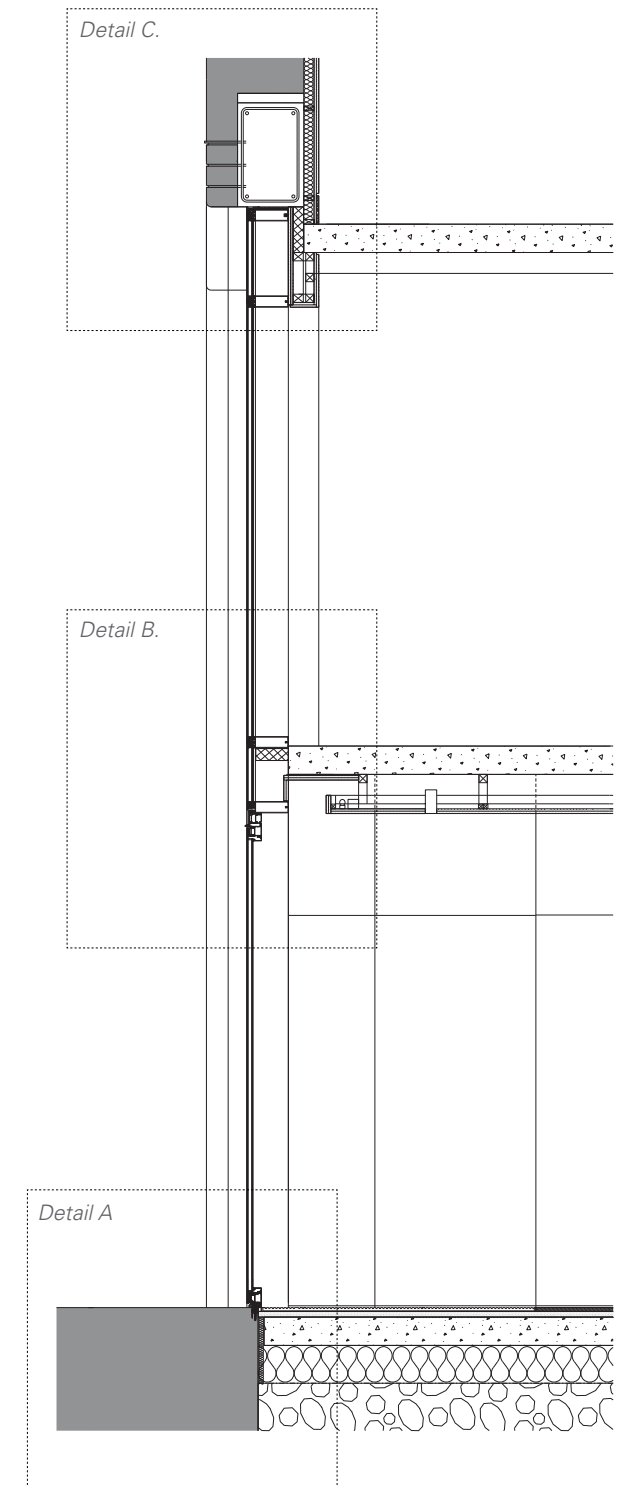
A. Typical detail - Glazed Door Threshold



B. Typical Detail - Glazed Door / Frosted spandrel panel.



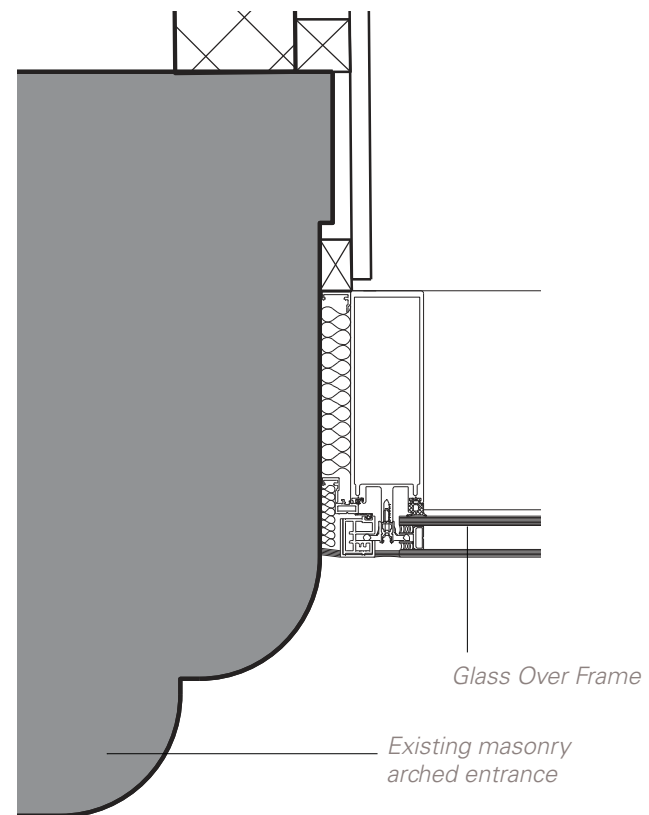
C. Typical Detail - Glazing Header / Transom and lintel.



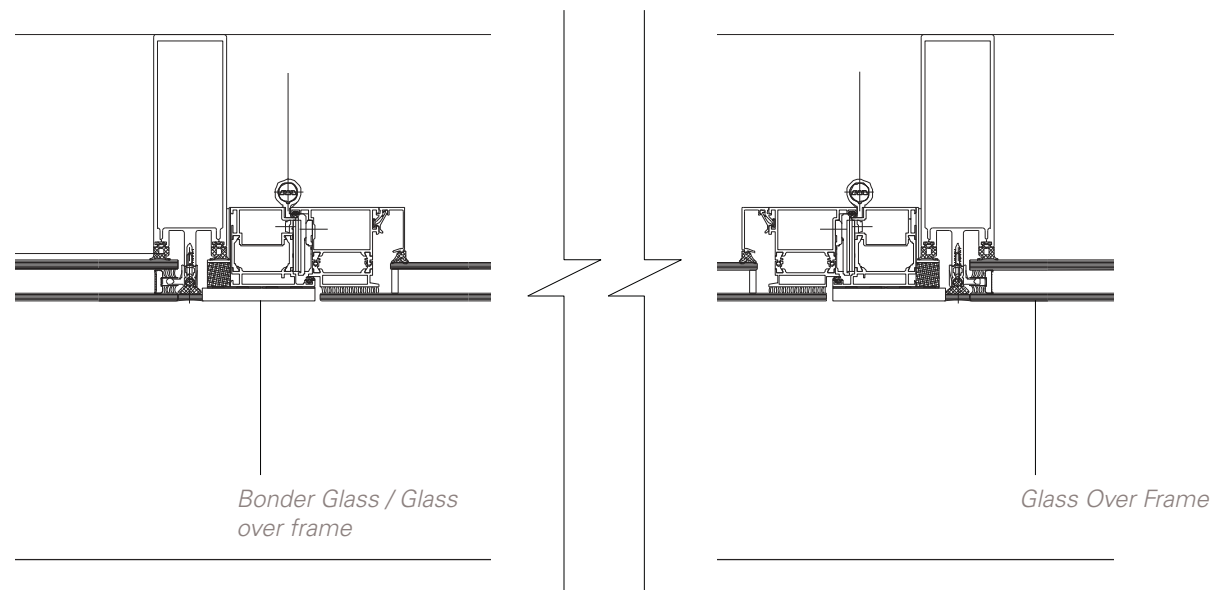
Section C-C: Typical Detail section - Ground Floor Glazing.

# CONDITION 8A

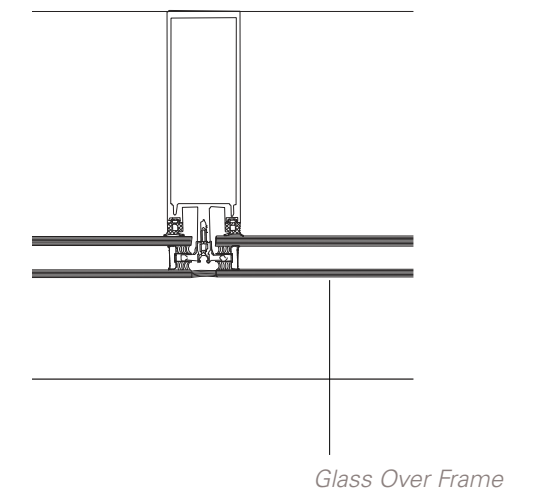
Typical ground floor glazing - Horizontal sections.



1. Typical Detail - End mullion to existing Archway.



2. Typical Detail - Door frame detail.



3. Typical Detail - Mullion & glazing with Silicone joint.



# CONDITION 8B

Detailed drawings, or samples of materials as appropriate, in respect of the following, shall be submitted to and approved in writing by the Council before the relevant part of the work is begun:

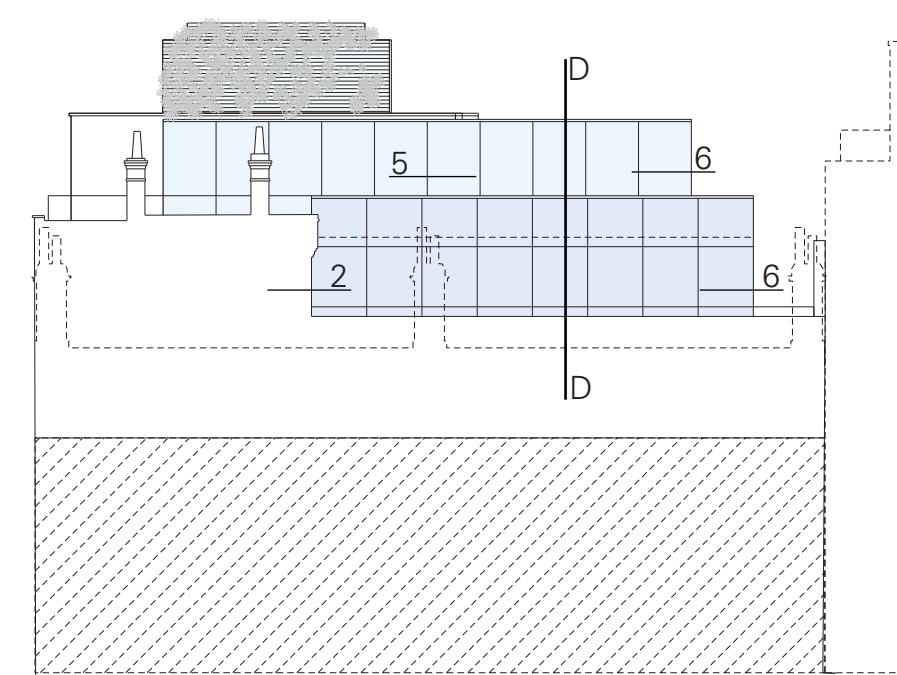
b) Plan, elevation and section drawings of the glazed extension at a scale of 1:10 with typical sections of join details of 1:1. The relevant part of the works shall not be carried out otherwise than in accordance with the details thus approved

Key:

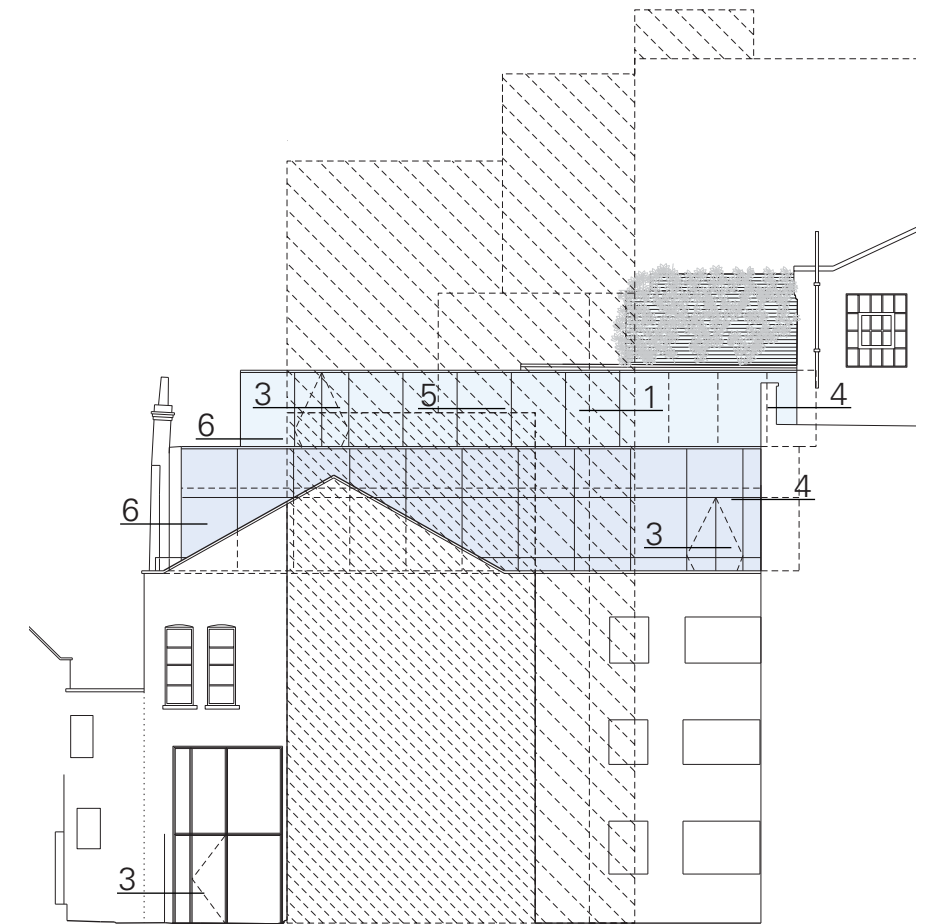
**A** Typical Details (See Following pages)



South Elevation  
(APPENDIX 400)



East Elevation  
(APPENDIX 401)



North Elevation  
(APPENDIX 402)

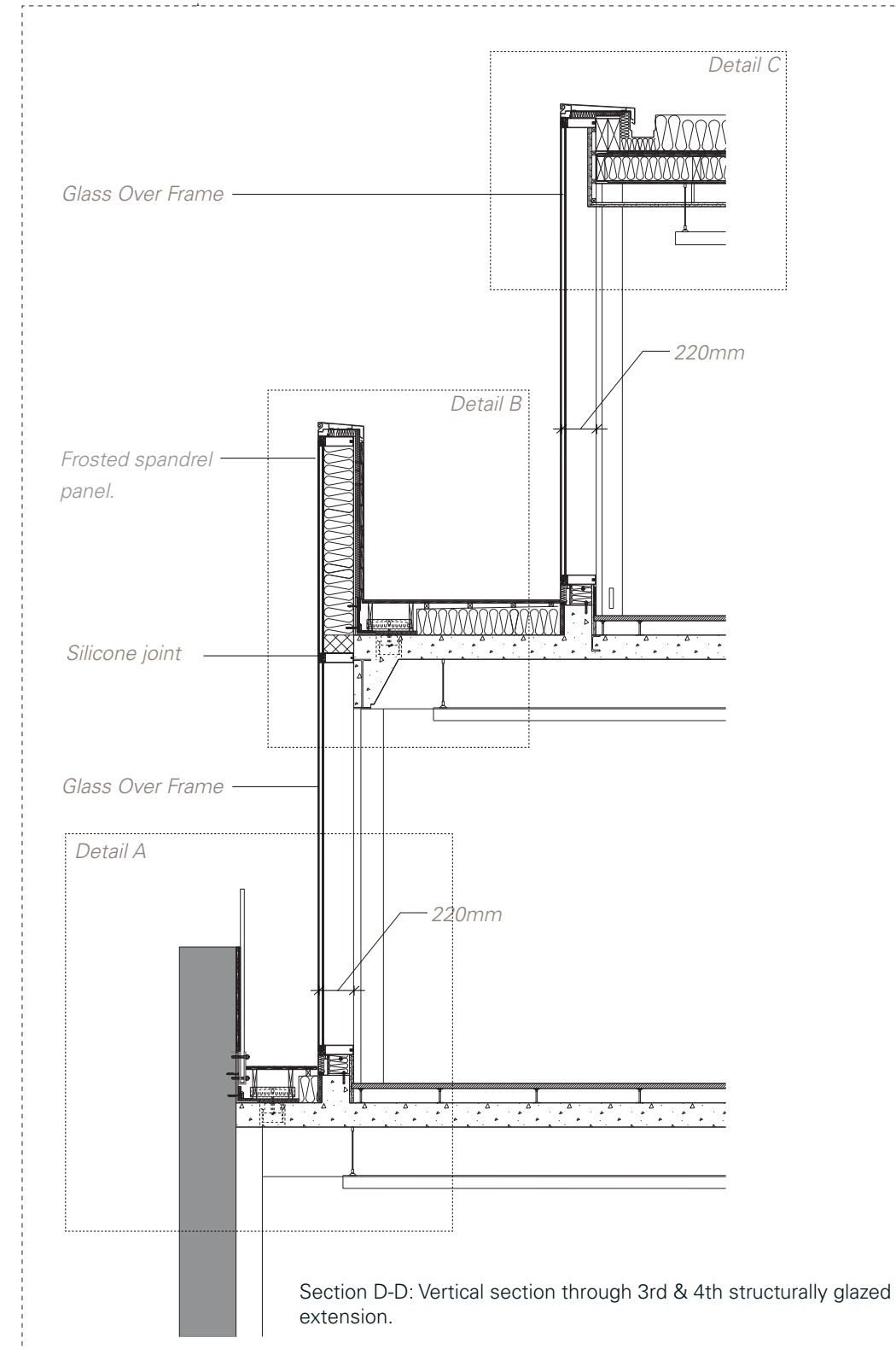
# CONDITION 8B

Glazing Extension - Typical Section



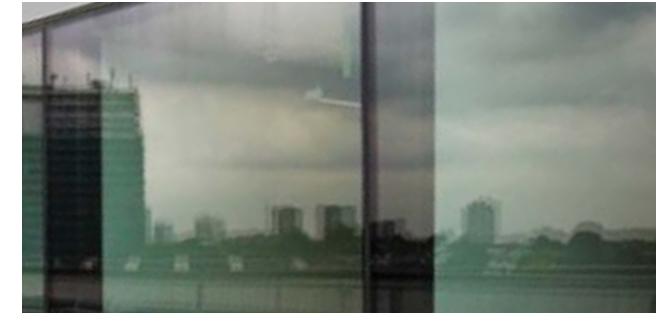
Illustration of specified glazing system.

APPENDIX 8B01

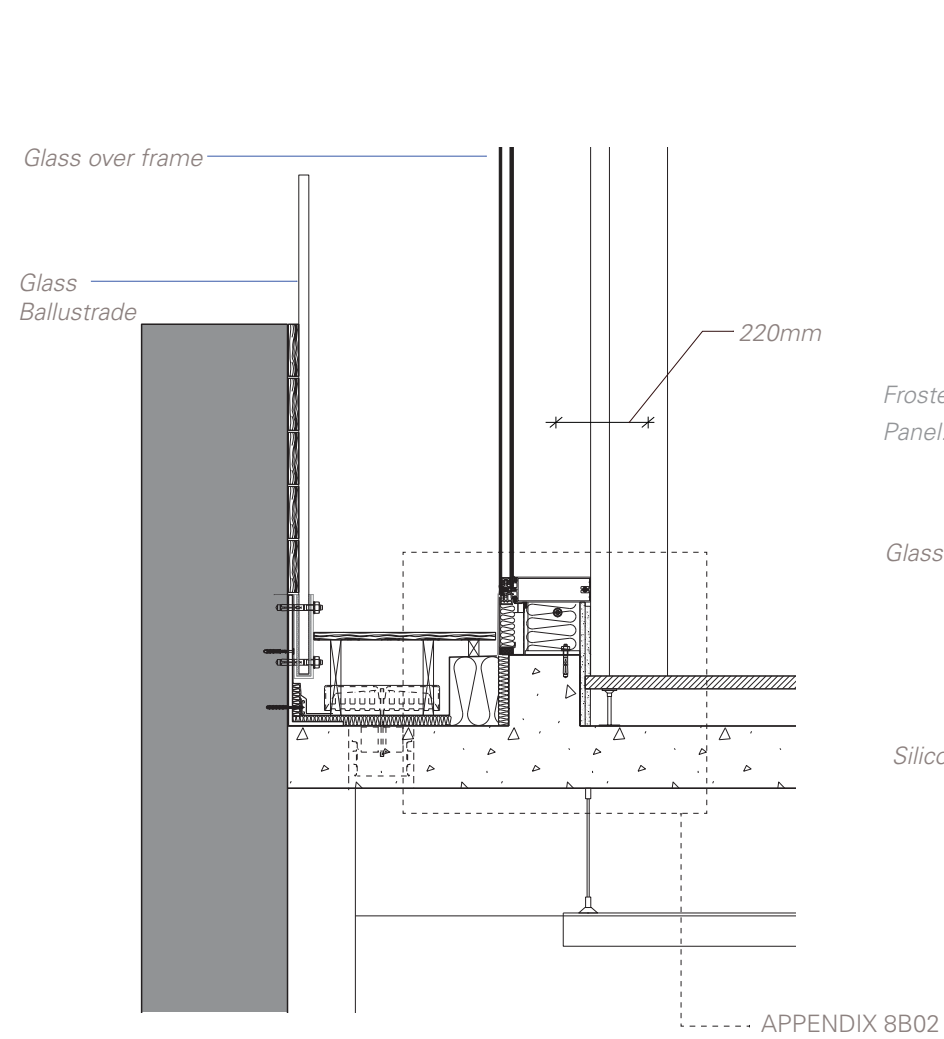


# CONDITION 8B

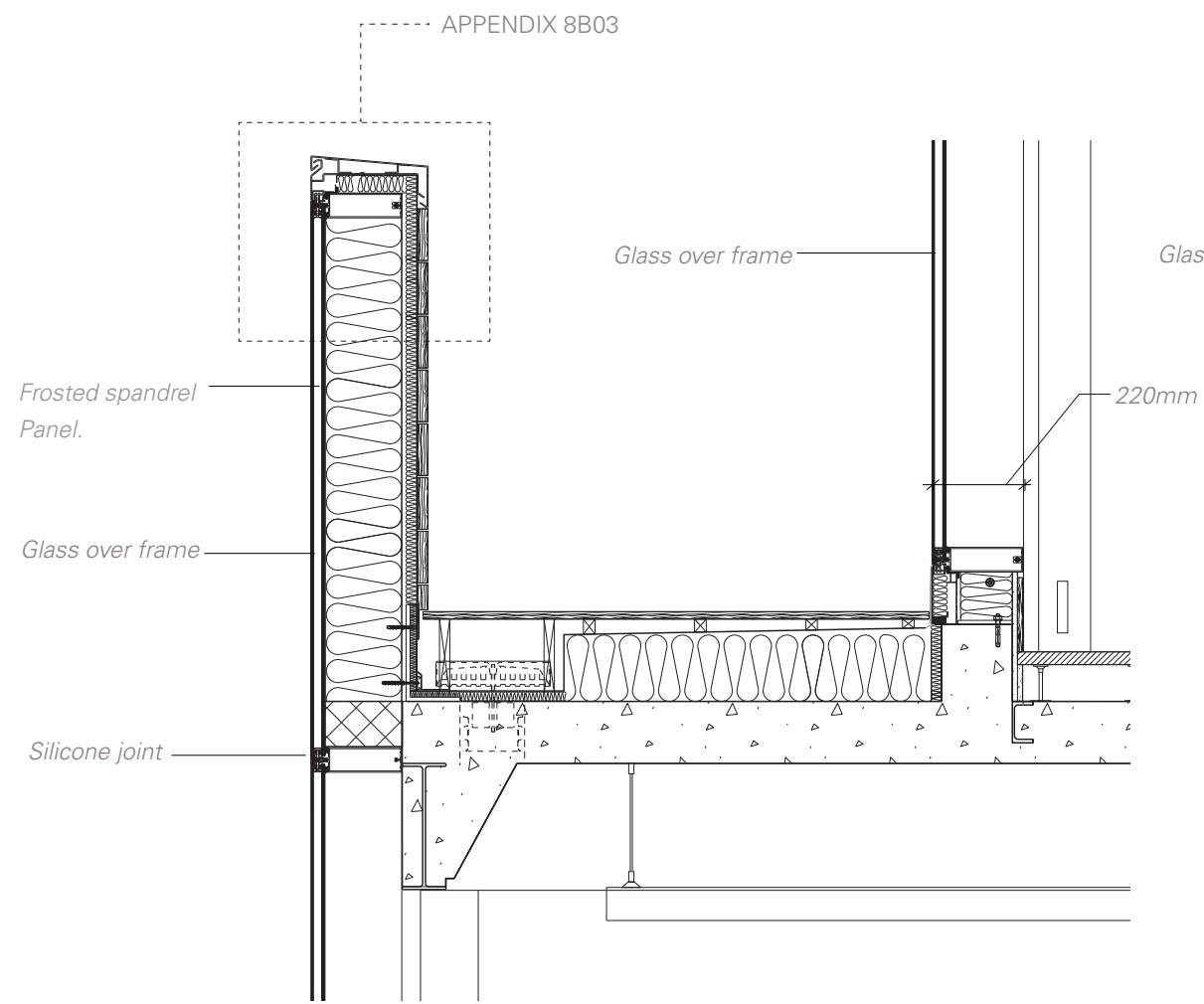
Glazing Extension - Typical Detailed Sections



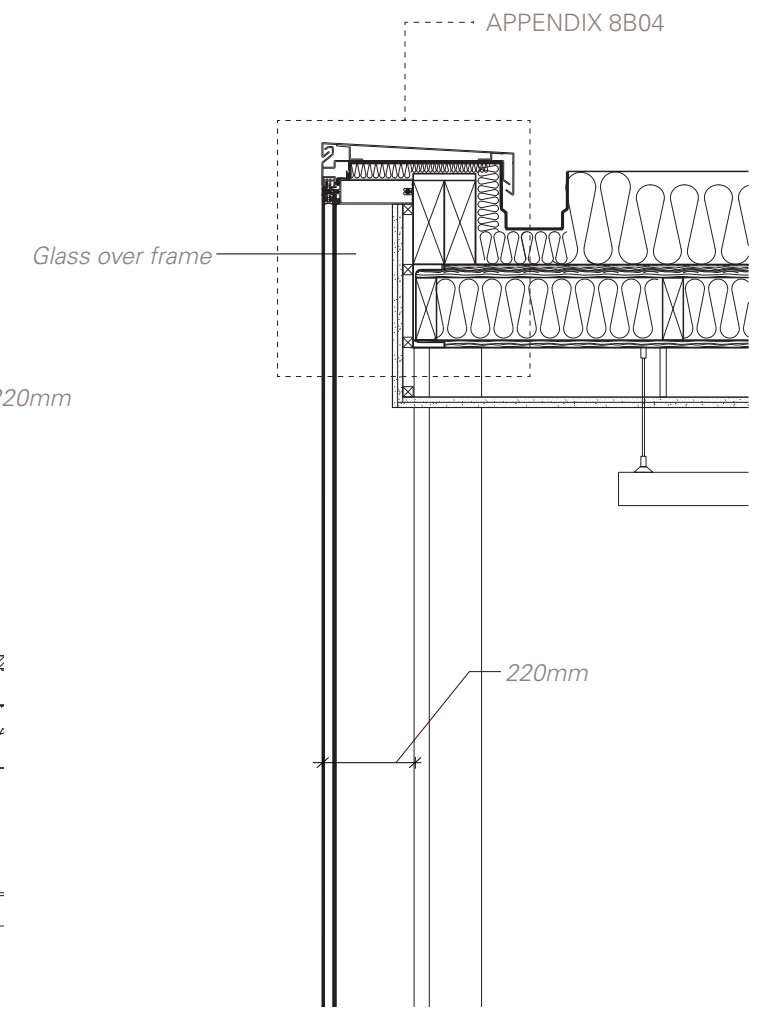
Glazing to be flush with mullions behind



A. Typical Glazing Detail - Proposed Glazing cill and external decking.



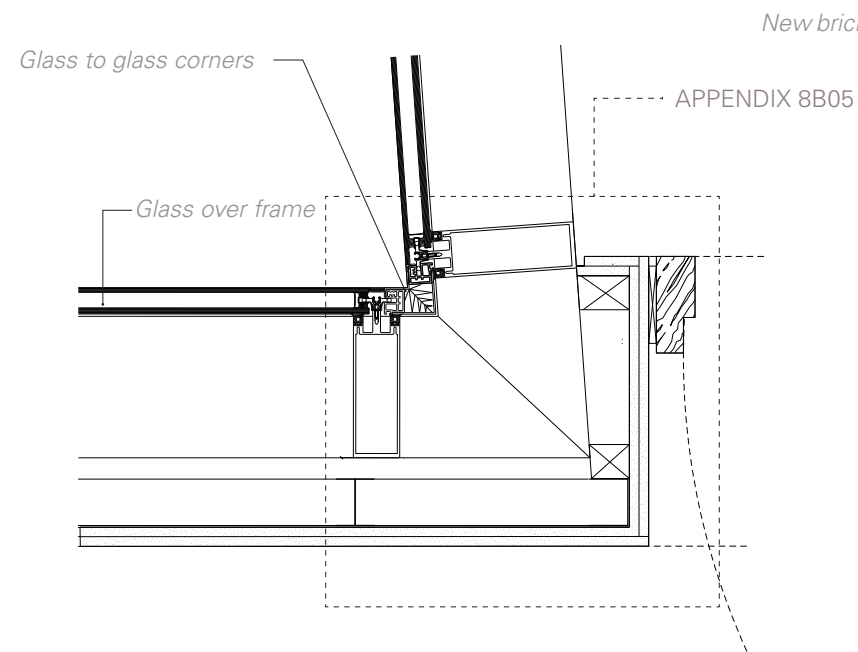
B. Typical Glazing Detail- Proposed frosted glazed balustrade and external decking.



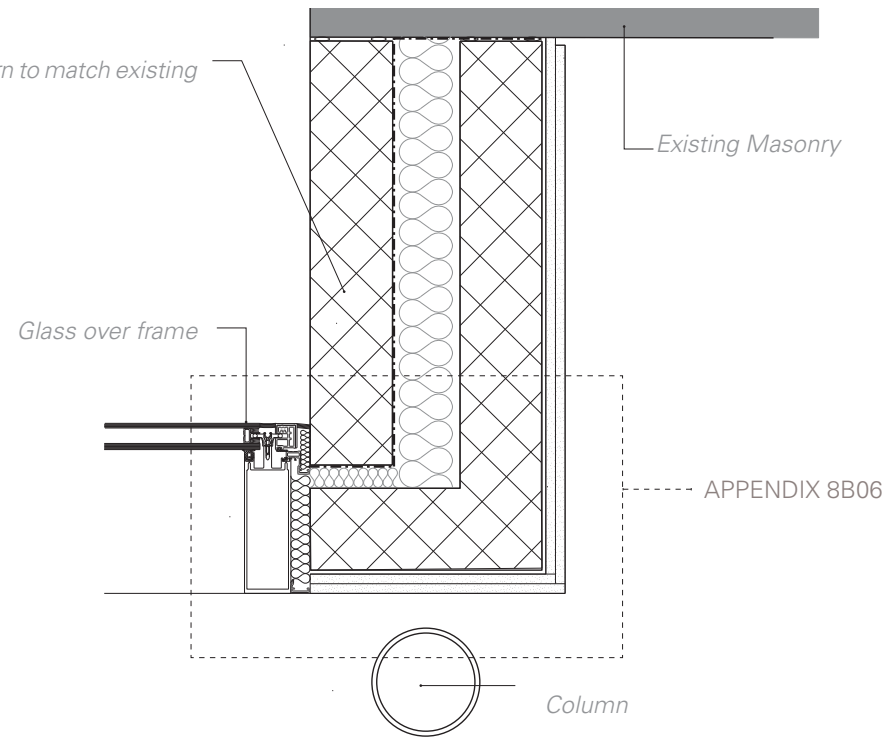
C. Typical Glazing Detail - New roof parapet.

# CONDITION 8B

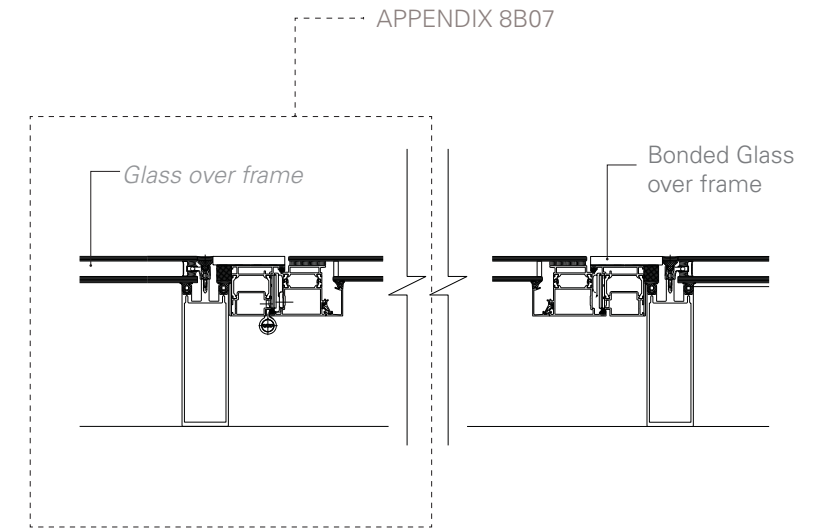
Glazing Extension - Horizontal Details



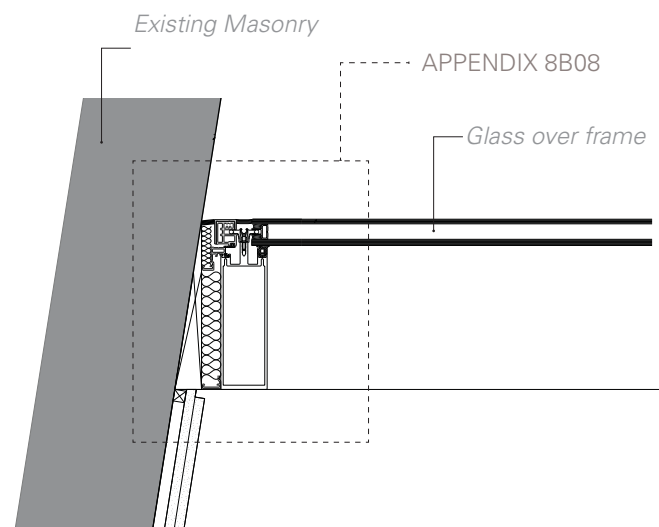
1. Typical Glazing Details - Glazed corner detail.



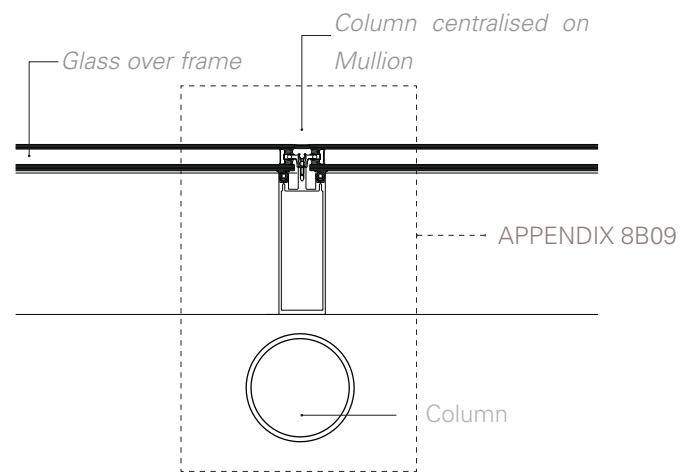
2. Typical Glazing Details - Glazing mullion to New brick return.



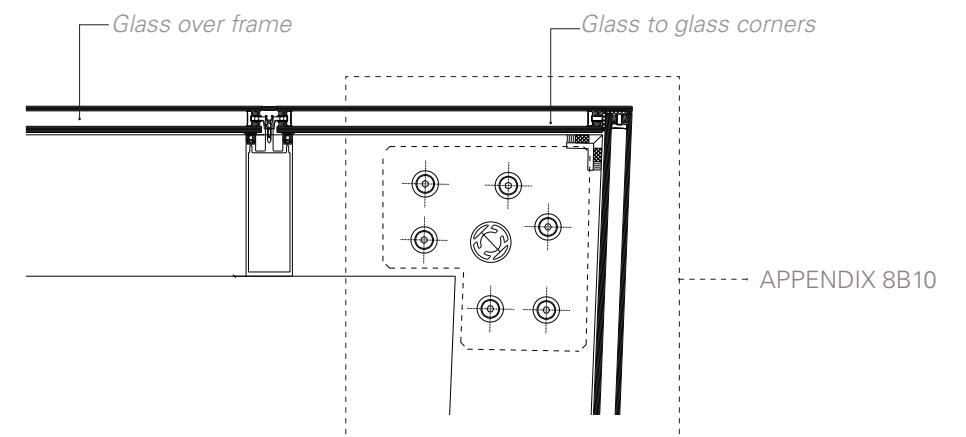
3. Typical Glazing Details - Door



4. Typical Glazing Details - Mullion to existing masonry



5. Typical Glazing Details - Glazing mullion with column



6. Typical Glazing Details - Glazing to glazing corner detail.