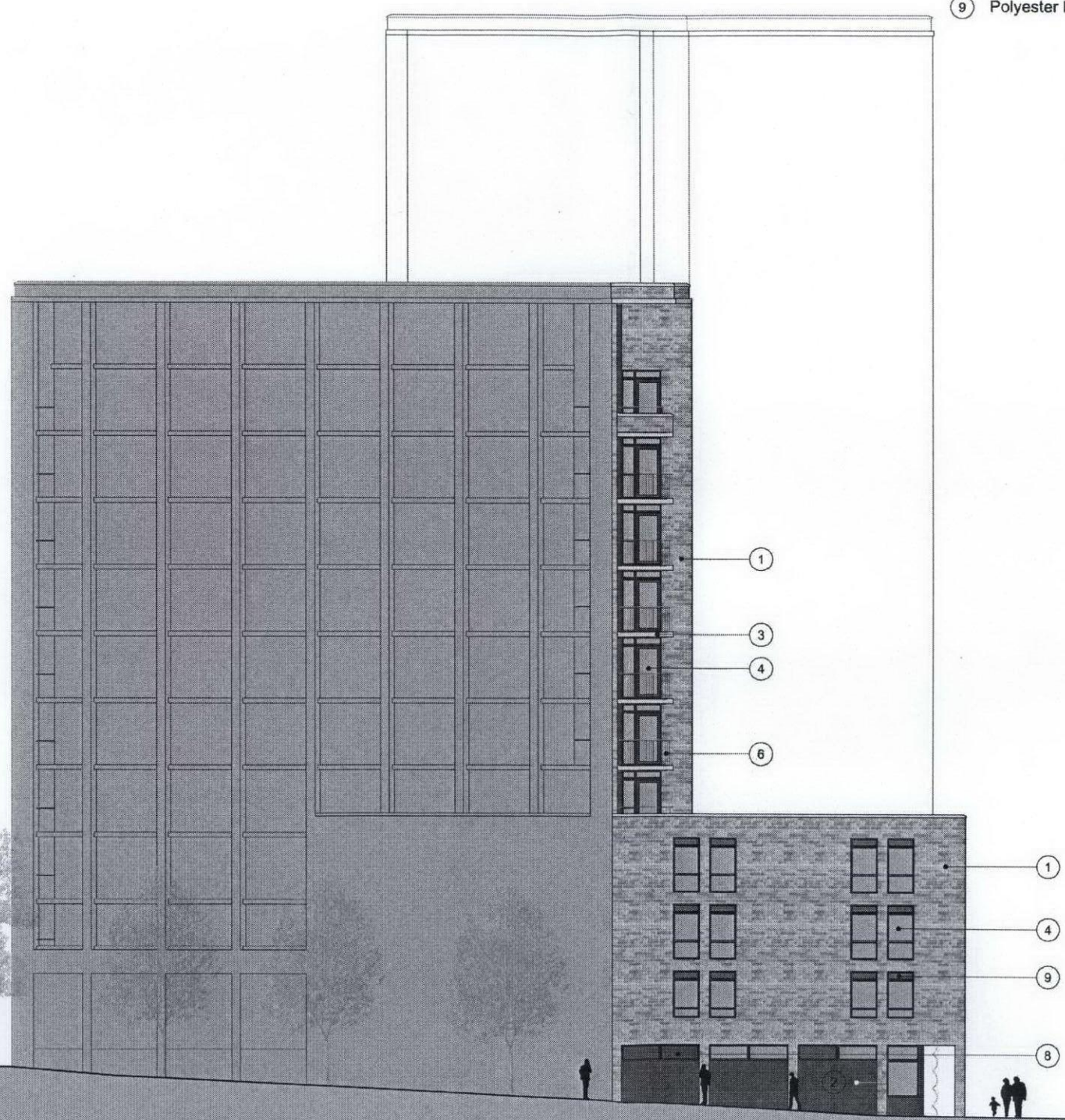


| | |
|------|-------------------|
| | ROOF LEVEL |
| 3125 | |
| | LEVEL 10 + 58.800 |
| 2925 | ROOF GARDEN |
| | LEVEL 9 + 55.875 |
| 2925 | |
| | LEVEL 8 + 52.950 |
| 2925 | |
| | LEVEL 7 + 50.025 |
| 2925 | |
| | LEVEL 6 + 47.100 |
| 2925 | |
| | LEVEL 5 + 44.175 |
| 2925 | |
| | LEVEL 4 + 41.250 |
| 2925 | |
| | LEVEL 3 + 38.325 |
| 2925 | |
| | LEVEL 2 + 35.400 |
| 2925 | |
| | LEVEL 1 + 32.475 |
| 2925 | |
| | LEVEL 0 + 29.550 |
| 00 | |



PROPOSED MATERIALS KEY

- ① Facing brick
- ② Glazed red brick
- ③ Pre-cast concrete spandrels with a Portland stone colour and smooth finish.
- ④ Aluminium framed double glazed windows and doors.
- ⑤ Aluminium framed double glazed shopfronts.
- ⑥ Polyester Powder Coated aluminium balustrades.
- ⑦ Polyester Powder Coated aluminium Juliette balcony.
- ⑧ Polyester Powder Coated aluminium louvres.
- ⑨ Polyester Powder Coated aluminium spandrel with integral ventilation grille.

notes

- The contractor is responsible for checking dimensions, tolerances and references. Any discrepancy to be verified with the Architect before proceeding with the work.
- Where an item is covered by drawings to different scales the larger scale drawing is to be worked to.
- Do not scale drawing. Figured dimensions to be worked to in all cases.

CDM Regulations 2007

ALL current drawings and specifications for the project must be read in conjunction with the Designer's Hazard and Environmental Assessment Report.

Key plan

| | | |
|----------|---|--|
| 08-11-11 | C | Window changed as clouded |
| 27-04-11 | B | Minor amendments as indicated on drawing |
| 29-09-10 | A | Minor amendments as indicated on drawing |

| date | rev | revision/author/checker |
|------|-----|-------------------------|
|------|-----|-------------------------|

purpose of issue
FOR APPROVAL

project
**KINGS CROSS CENTRAL
BLOCK R4**

drawing
WEST ELEVATION

| | |
|------------------------------------|-----------------|
| drawing no A6308-2.3-207 | rev C |
|------------------------------------|-----------------|

| | |
|-------------|---------------|
| drawn KL | checked JP |
|-------------|---------------|

| | |
|---------------------|------------------|
| scale @ A3 1:250 | date Apr 2011 |
|---------------------|------------------|

PRP Architects ©
10 Lindsey Street
London
EC1A 9HP

T +44 (0)20 7653 1200
F +44 (0)20 7653 1201
lon.prp@prparchitects.co.uk