

PROPOSED MATERIALS KEY

- ① Facing brick
- ② Glazed red terracotta facade panel.
- ③ Pre-cast concrete spandrels with a Portland stone colour and smooth finish
- ④ Aluminium framed double glazed windows and doors.
- ⑤ Aluminium framed double glazed shopfronts.
- ⑥ Polyester Powder Coated aluminium balustrades.
- ⑦ Polyester Powder Coated aluminium Juliette balcony.
- ⑧ Polyester Powder Coated aluminium louvres.
- ⑨ Polyester Powder Coated aluminium spandrel with integral ventilation grille

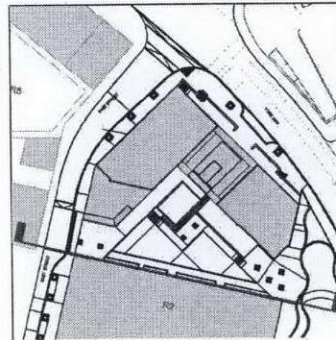
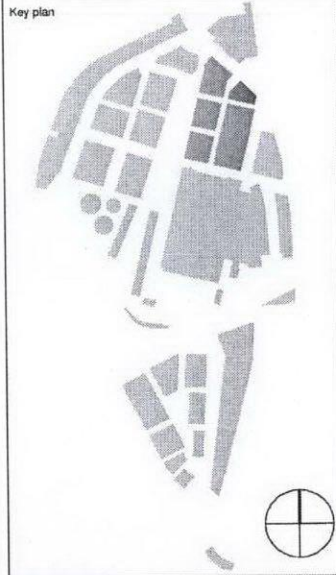
notes

- The contractor is responsible for checking dimensions, tolerances and references. Any discrepancy to be verified with the Architect before proceeding with the works.
- Where an item is covered by drawings to different scales the larger scale drawing is to be worked to.
- Do not scale drawing. Figured dimensions to be worked to in all cases.

CDM Regulations 2007

ALL current drawings and specifications for the project must be read in conjunction with the Designer's Hazard and Environmental Assessment Report.

Key plan



29-09-10 A Minor amendments as indicated on drawing

date	rev	revision/author/checker
------	-----	-------------------------

purpose of issue
FOR APPROVAL

project
KINGS CROSS CENTRAL
BLOCK R4

drawing
SOUTH ELEVATION

drawing no
A6308-2.3-206

drawn KL checked JP

scale @ A3 1:250 date Sept 2010

PRP Architects ©
10 Lindsey Street
London
EC1A 9PP
T +44 (0)20 7653 1200
F +44 (0)20 7653 1201
lon.prp@prparchitects.co.uk



3125	ROOF LEVEL
2925	LEVEL 10 + 58.800
2925	ROOF GARDEN
2925	LEVEL 9 + 55.875
2925	LEVEL 8 + 52.950
2925	LEVEL 7 + 50.025
2925	LEVEL 6 + 47.100
2925	LEVEL 5 + 44.175
2925	LEVEL 4 + 41.250
2925	LEVEL 3 + 38.325
2925	LEVEL 2 + 35.400
2925	LEVEL 1 + 32.475
2925	LEVEL 0 + 29.550
3600	NON RESI
	LEVEL -1 + 25.950

BUILDING R5 - INDICATIVE DESIGN

EAST STREET