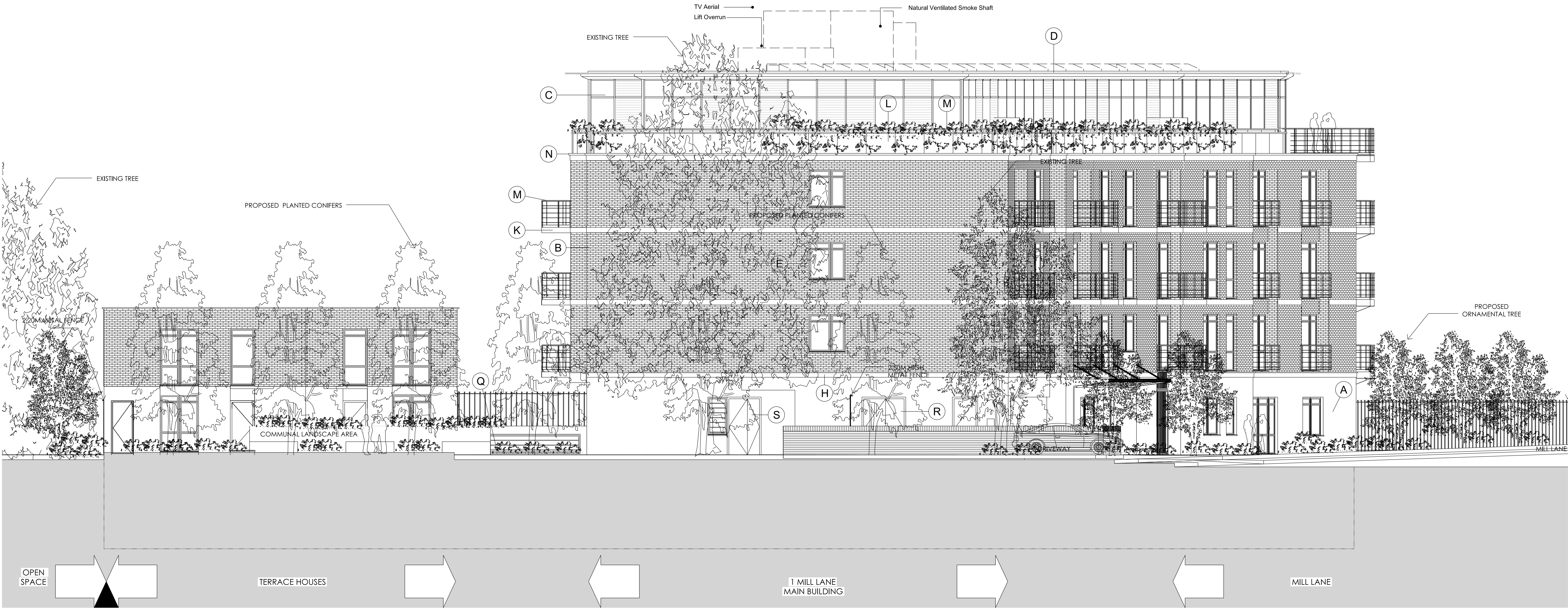




Important Note: Drawings will be subject to change until Building Control approval is received.

- KEY
- A Render by Weber Pral M or Sililar Approved - Colour Grey
  - B Brick by Ibstock Staffordshire Smooth Red - Smooth Finish
  - C Curtain Walling by Duplus Domes - Lightspan Curtain Walling/ Metal Tech 420 windows & doors, Colour RAL 8019
  - D Horizontal Solar Shading by ALPS/ Colt Systems - Solarfin Aerofoils
  - E External Windows & Doors by Rational Windows - Aldus Timber / Aluminium Composite Range, Colour RAL 8019
  - H Horizontal Render Beading by Wemico - Colour RAL 8014
  - J Metal Security Downpipe by Guttermaster - Colour PPC RAL 8019
  - K Banding in abeyance - yet to be resolved
  - L External Steel Vertical Balcony Ballustrades by Contractors Choice - Colour PPC RAL 8014
  - M External Cedar Balcony Handrail by Contractors Choice
  - N Parapet Coping by Bailey - C Fix Range, Colour PPC RAL 8014
  - Q Colt 1ULSH Louvre Panel by ALPS/ Colt Systems - Colour to match Ground Floor Render Coat
  - R UK Power Network Metal Door by ALPS / Colt Systems - Colour to match Ground Floor Render Coat
  - S Bin Store 1ULSH Louvre Door by ALPS / Colt Systems - Colour to match Ground Floor Render Coat

PLEASE REFER TO MANUFACTURES LITERATURE FOR FURTHER DETAIL



**B**  
PL SK03  
APARTMENT: WEST ELEVATION  
SCALE 1:100 @ A1

B	Construction elevation replaced with Approved Planting Elevation (Planning Ref: 2010/ 6754/ F) as requested by Camden Planning for partial discharge of Condition 11	22.12.2011	AMG	JK
A	Materials updated in accordance to Client Approval	07.11.2011	AMG	JK

REV.

DESCRIPTION

DATE

DRN BY

CKD BY

PROJECT

Mill Lane, West Hampstead

TITLE

West Elevation

CLIENT

Taylor Wimpey

JOB No.

4748

DRAWING No.

PL SK03

REVISION

B

SCALE

1:100

DRAWN BY

AMG

CHECKED BY

PI

STATUS

PLANNING - CONDITION No.11

DATE

14.07.11

2nd Floor  
Threeways House  
40-44 Clipstone Street  
London  
W1W 5DW

T: 0207 580 5330

F: 0207 436 5348

lon@jmarshitects.net

www.jmarshitects.net