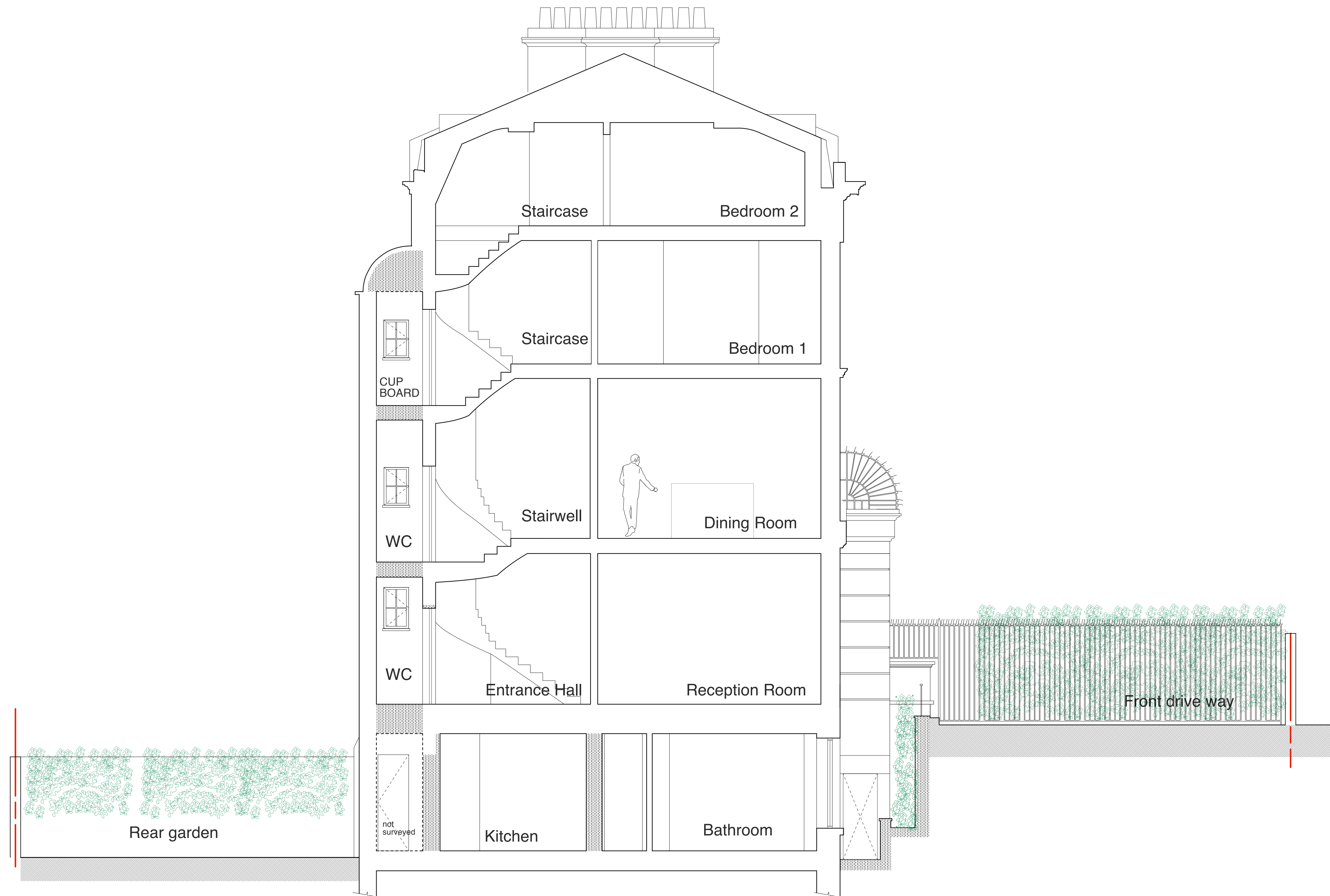


Section C - C



General Notes

All dimensions to be verified on site
To be read in conjunction with all relevant documents
In the event of discrepancy notify the Architect immediately
This document is copyright of Hugh Cullum Architects Ltd

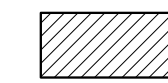
Issue Status

SK	Information	F	Feasibility	D	Design
P	Permissions	S	Scheme	T	Tender
C	Construction	E	Existing Condition		

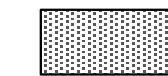
DRAWING KEY



Existing



Proposed



Demolished

(_): Issued for Planning as additional information
(23.12.11/YH)

Revision: Information (date/drawn by)

HUGH CULLUM
ARCHITECTS LTD
Bloomsbury Design
61b Judd Street
London WC1H 9QT
t 020 7383 7647
f 020 7387 7645
mail@hughcullum.com

13 Prince Albert Road

Planning: Existing conditions

Section C-C

1:50@A1 December 2011

PA013-P414()

