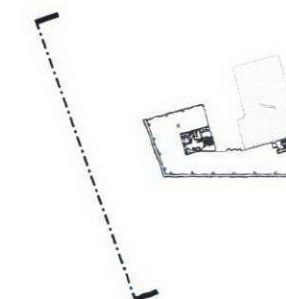


DO NOT SCALE THIS DRAWING

CONTRACTORS ARE TO CHECK ALL DIMENSIONS PRIOR TO COMMENCEMENT ON SITE AND NOTIFY THE ARCHITECT OF ANY ERRORS, OMISSIONS, OR DISCREPANCIES.

TATE & HINDLE DESIGN LIMITED RETAIN COPYRIGHT OF THIS DRAWING. IT MAY NOT BE COPIED, ALTERED OR REPRODUCED IN ANY WAY WITHOUT THEIR WRITTEN AUTHORITY.



### MATERIALS

- ① DOUBLE GLAZED UNIT WITH HIGH PERFORMANCE SOLAR CONTROL GLASS
- ② HIGH OPACITY FRIT TO COLUMN ZONE
- ③ LOW OPACITY FRIT TO VISION ZONE BETWEEN COLUMNS
- ④ FLUSH OPAQUE GLASS TO FACADE WHERE EXISTING CANOPY REMOVED
- ⑤ EXISTING SHOPFRONTS RETAINED
- ⑥ FULL HEIGHT PLANT ENCLOSURE AT ROOF LEVEL FORMED OF PPC ALUMINIUM PANELS
- ⑦ WHITE RENDER TO RETAINED FACADES
- ⑧ NEW PPC ALUMINIUM WINDOWS & ENTRANCE
- ⑨ STAINLESS STEEL HANDRAIL AND GLASS BALUSTRADE - ZINC PLANTERS BEHIND



**COPY**

2011/5823/P  
00 Planning Application  
rev description date checked  
status  
FOR INFORMATION

client  
ARTILLERY PROPERTIES Ltd

project  
ISIS HOUSE  
64-76 New Oxford Street

drawing  
PROPOSED  
WEST ELEVATION

scale	drawn	checked	date
1:100@A1	CH	HR	21-10-11
1:200@A3			

project no.	orig	revision
10730	P-(05)003	00

**TATE HINDLE**  
ARCHITECTURE + DESIGN

1 Lindsey Street, Smithfield, London EC1A 9HP T 020 7332 4850  
mail@tatehindle.co.uk www.tatehindle.co.uk F 020 7332 4888  
© Tate and Hindle Design Limited

