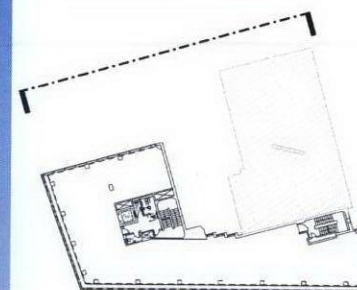


DO NOT SCALE THIS DRAWING

CONTRACTORS ARE TO CHECK ALL DIMENSIONS PRIOR TO COMMENCEMENT ON SITE AND NOTIFY THE ARCHITECT OF ANY ERRORS, OMISSIONS, OR DISCREPANCIES.

TATE & HINDLE DESIGN LIMITED RETAIN COPYRIGHT OF THIS DRAWING. IT MAY NOT BE COPIED, ALTERED OR REPRODUCED IN ANY WAY WITHOUT THEIR WRITTEN AUTHORITY.



MATERIALS

- ① DOUBLE GLAZED UNIT WITH HIGH PERFORMANCE SOLAR CONTROL GLASS
- ② HIGH OPACITY FRIT TO COLUMN ZONE
- ③ LOW OPACITY FRIT TO VISION ZONE BETWEEN COLUMNS
- ④ FLUSH OPAQUE GLASS TO FACADE WHERE EXISTING CANOPY REMOVED
- ⑤ EXISTING SHOPFRONTS RETAINED
- ⑥ FULL HEIGHT PLANT ENCLOSURE AT ROOF LEVEL FORMED OF PPC ALUMINIUM PANELS
- ⑦ WHITE RENDER TO RETAINED FACADES
- ⑧ NEW PPC ALUMINIUM WINDOWS & ENTRANCE
- ⑨ STAINLESS STEEL HANDRAIL AND GLASS BALUSTRADE - ZINC PLANTERS BEHIND

OUTLINE OF EXISTING BUILDING AND ROOF LEVEL PLANT ENCLOSURES

COPY

00 Planning Application
rev description date checked
21.10.2011 ROB

FOR INFORMATION

client
ARTILLERY PROPERTIES Ltd

project
ISIS HOUSE
64-76 New Oxford Street

drawing
PROPOSED
NORTH ELEVATION

scale
1:100@A1
1:200@A3

project no.
10730

drg
P-(05)002

revision
00

TATE HINDLE
ARCHITECTURE + DESIGN

1 Lindsey Street, Smithfield, London EC1A 9HP
mail@tatehindle.co.uk www.tatehindle.co.uk T 020 7332 4850
© Tate and Hindle Design Limited F 020 7332 4888

1-5 BLOOMSBURY STREET

BLOOMSBURY STREET

STREATHAM STREET

DYOTT STREET

