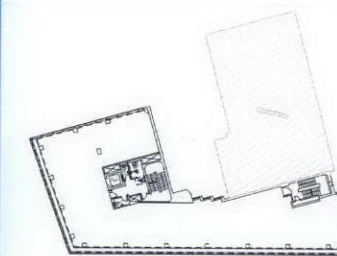


DO NOT SCALE THIS DRAWING

CONTRACTORS ARE TO CHECK ALL DIMENSIONS PRIOR TO COMMENCEMENT ON SITE AND NOTIFY THE ARCHITECT OF ANY ERRORS, OMISSIONS, OR DISCREPANCIES.

TATE & HINDLE DESIGN LIMITED RETAIN COPYRIGHT OF THIS DRAWING. IT MAY NOT BE COPIED, ALTERED OR REPRODUCED IN ANY WAY WITHOUT THEIR WRITTEN AUTHORITY.



MATERIALS

- ① DOUBLE GLAZED UNIT WITH HIGH PERFORMANCE SOLAR CONTROL GLASS
- ② HIGH OPACITY FRIT TO COLUMN ZONE
- ③ LOW OPACITY FRIT TO VISION ZONE BETWEEN COLUMNS
- ④ FLUSH OPAQUE GLASS TO FACADE WHERE EXISTING CANOPY REMOVED
- ⑤ EXISTING SHOPFRONTS RETAINED
- ⑥ FULL HEIGHT PLANT ENCLOSURE AT ROOF LEVEL FORMED OF PPC ALUMINIUM PANELS
- ⑦ WHITE RENDER TO RETAINED FACADES
- ⑧ NEW PPC ALUMINIUM WINDOWS & ENTRANCE
- ⑨ STAINLESS STEEL HANDRAIL AND GLASS BALUSTRADE - ZINC PLANTERS BEHIND



00	Planning Application	21.10.2011	ROB
rev	description	date	checked

FOR INFORMATION

client	ARTILLERY PROPERTIES Ltd
project	ISIS HOUSE 64-76 New Oxford Street
drawing	PROPOSED SOUTH ELEVATION

scale	drawn	checked	date
1:100@A1	CH	HR	21-10-11
1:200@A3			
project no.	drg	revision	
10730	P-(05)001	00	

TATE HINDLE
ARCHITECTURE + DESIGN

1 Lindsey Street, Smithfield, London EC1A 9HP T 020 7332 4850
mail@tatehindle.co.uk www.tatehindle.co.uk F 020 7332 4888
© Tate and Hindle Design Limited

