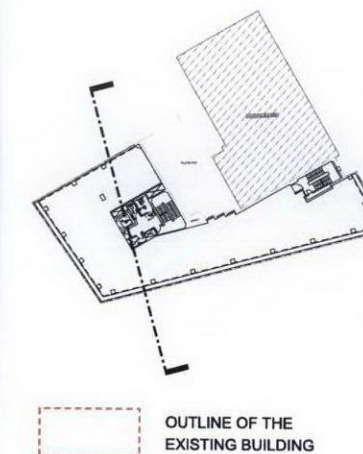
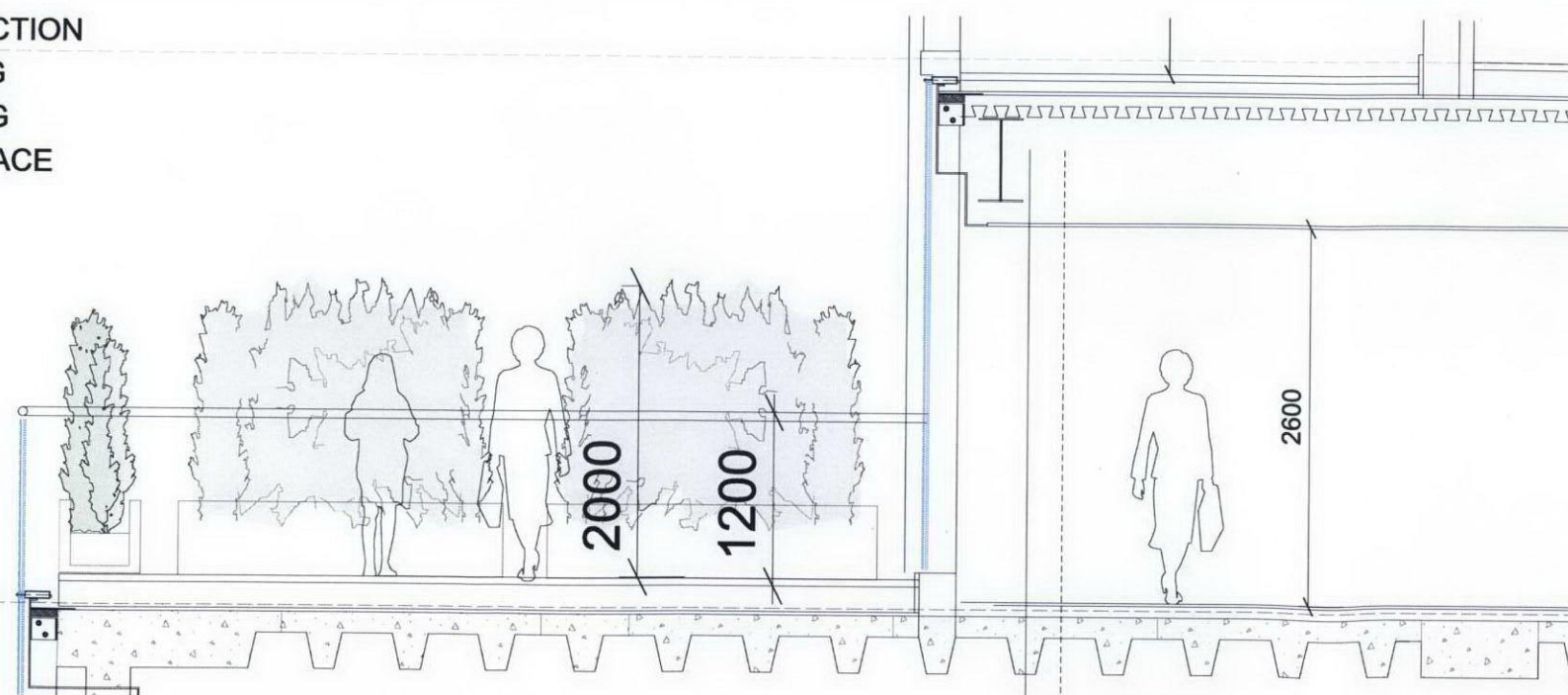


DO NOT SCALE THIS DRAWING  
CONTRACTORS ARE TO CHECK ALL DIMENSIONS PRIOR TO COMMENCEMENT ON SITE AND NOTIFY THE ARCHITECT OF ANY ERRORS, OMISSIONS, OR DISCREPANCIES.  
TATE & HINDLE DESIGN LIMITED RETAIN COPYRIGHT OF THIS DRAWING. IT MAY NOT BE COPIED, ALTERED OR REPRODUCED IN ANY WAY WITHOUT THEIR WRITTEN AUTHORITY.



**COPY**

PART SECTION  
SHOWING  
PLANTING  
TO TERRACE



00 Planning Application 21.10.2011 ROB  
rev description date checked

FOR INFORMATION  
client ARTILLERY PROPERTIES Ltd  
project ISIS HOUSE  
64-76 New Oxford Street

PROPOSED  
SECTION A-A

scale 1:100@A1 1:200@A3  
drawn ROB checked date 21-10-11

project no. 10730  
dig P-(04)002 revision 00

**TATE HINDLE**  
ARCHITECTURE + DESIGN

1 Lindsey Street, Smithfield, London EC1A 9HP T 020 7332 4850  
mail@tatehindle.co.uk www.tatehindle.co.uk F 020 7332 4888  
© Tate and Hindle Design Limited