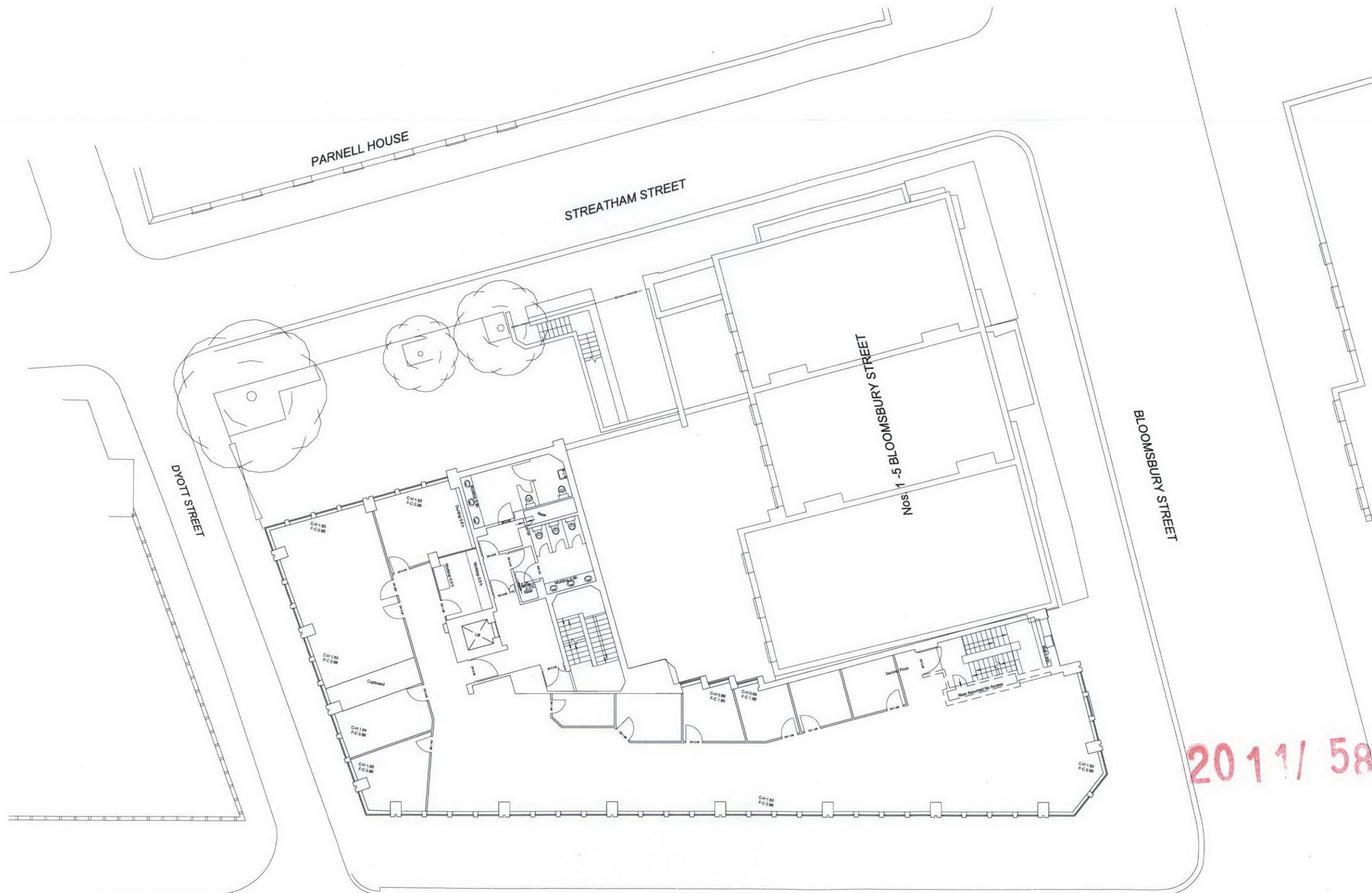
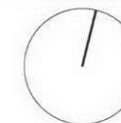


DO NOT SCALE THIS DRAWING
CONTRACTORS ARE TO CHECK ALL DIMENSIONS PRIOR TO
COMMENCEMENT ON SITE AND NOTIFY THE ARCHITECT OF
ANY ERRORS, OMISSIONS, OR DISCREPANCIES.
TATE & HINDLE DESIGN LIMITED RETAIN COPYRIGHT OF THIS
DRAWING. IT MAY NOT BE COPIED, ALTERED OR REPRODUCED
IN ANY WAY WITHOUT THEIR WRITTEN AUTHORITY.



NEW OXFORD STREET



COPY

2011/ 5823/P

rev description status date checked

FOR INFORMATION

client
ARTILLERY PROPERTIES Ltd

project
ISIS HOUSE
64-76 New Oxford Street

drawing
EXISTING
SECOND FLOOR PLAN

scale
1:100@A1
1:200@A3

project no.
10730

TATE HINDLE
ARCHITECTURE + DESIGN

1 Lindsey Street, Smithfield, London EC1A 9HP T 020 7332 4850
mail@tatehindle.co.uk www.tatehindle.co.uk F 020 7332 4888
© Tate and Hindle Design Limited