

RESPONSIBILITY IS NOT ACCEPTED FOR ERRORS MADE BY OTHERS IN
 SCANNING FROM THIS DRAWING
 CONTRACTORS MUST BE REPORTED IMMEDIATELY TO THE
 ARCHITECT BEFORE PROCEEDING.
 THIS DRAWING IS COPYRIGHT

Rev. Date Initials

P1	11.03.11	Preliminary Issue	TN
P2	04.05.11	More planning notes added, Plant enclosure amended	TN
P3	01.09.11	Blue text removed Roof build-up specification amended.	TN
P4	13.12.11	Fascia / Soffit eaves detail to third and fourth floor amended (square as opposed to curved). Angled PV panels added for reference. Sightlines from street level and adjacent building added to illustrate set-back parapet concealing PV panels.	JE

CDM Regulations	

PLANNING

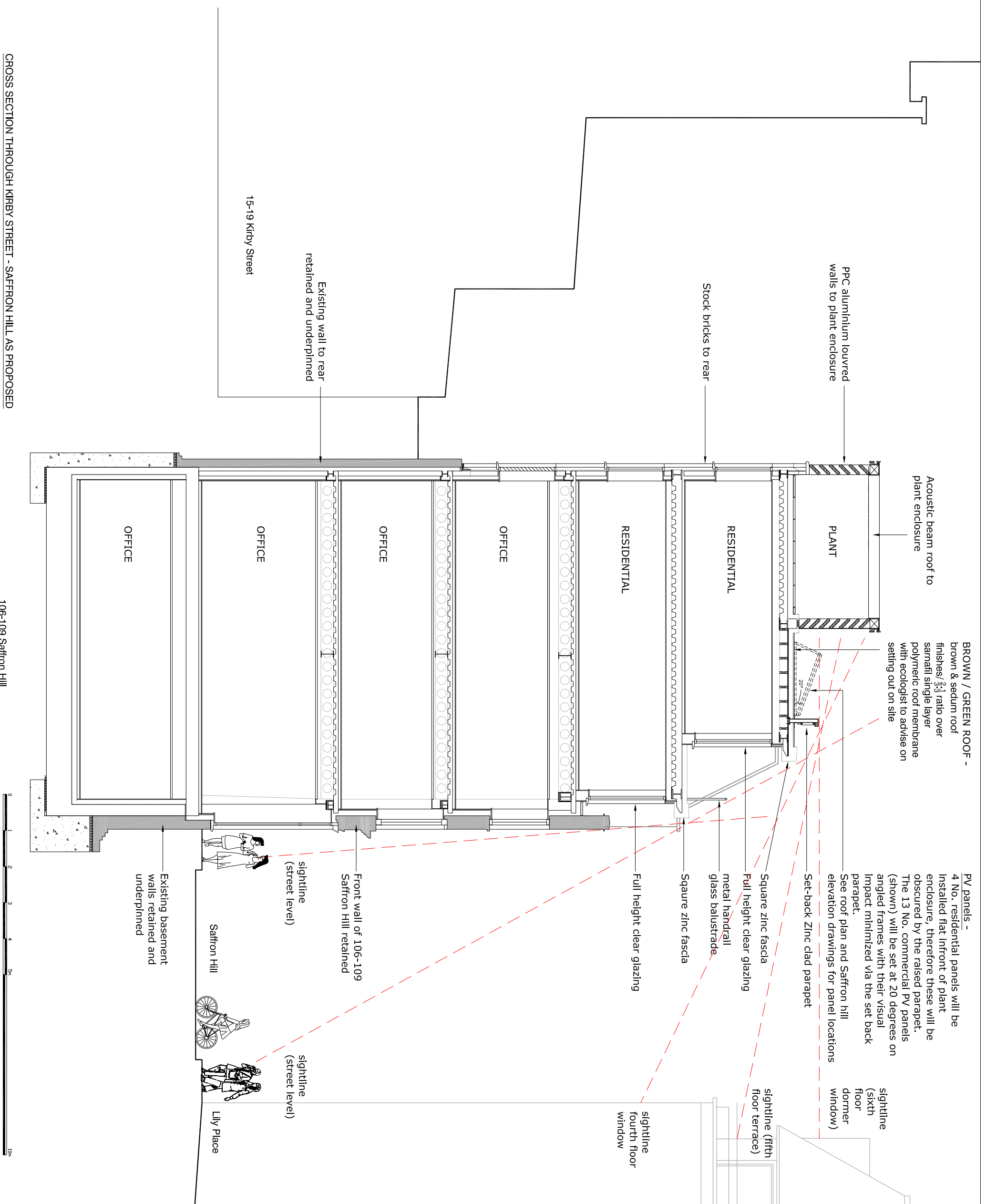
Nash Partnership

Somerset Coalhouse
 23a Sydney Buildings
 Bathwick, Bath
 BA2 9BZ
 Telephone: 01225 442424
 Facsimile: 01225 442484
 Email: nash@nashpartnership.com

Drawn	Proj Manager	Scale	Date first created
TN	RL	1:100@A3	11.03.11
Drawing No.	10100(L)108		REVISION
PROJECT		P4	

106-109 Saffron Hill
 London

TITLE
 Typical Section



CROSS SECTION THROUGH KIRBY STREET - SAFFRON HILL AS PROPOSED