

170\_G\_021

Upper Ground Floor Plan: Proposed

Scale: 1:50 @ A3

20 December 2011  
Revision: B

62 Gloucester Crescent  
London NW1 7EG

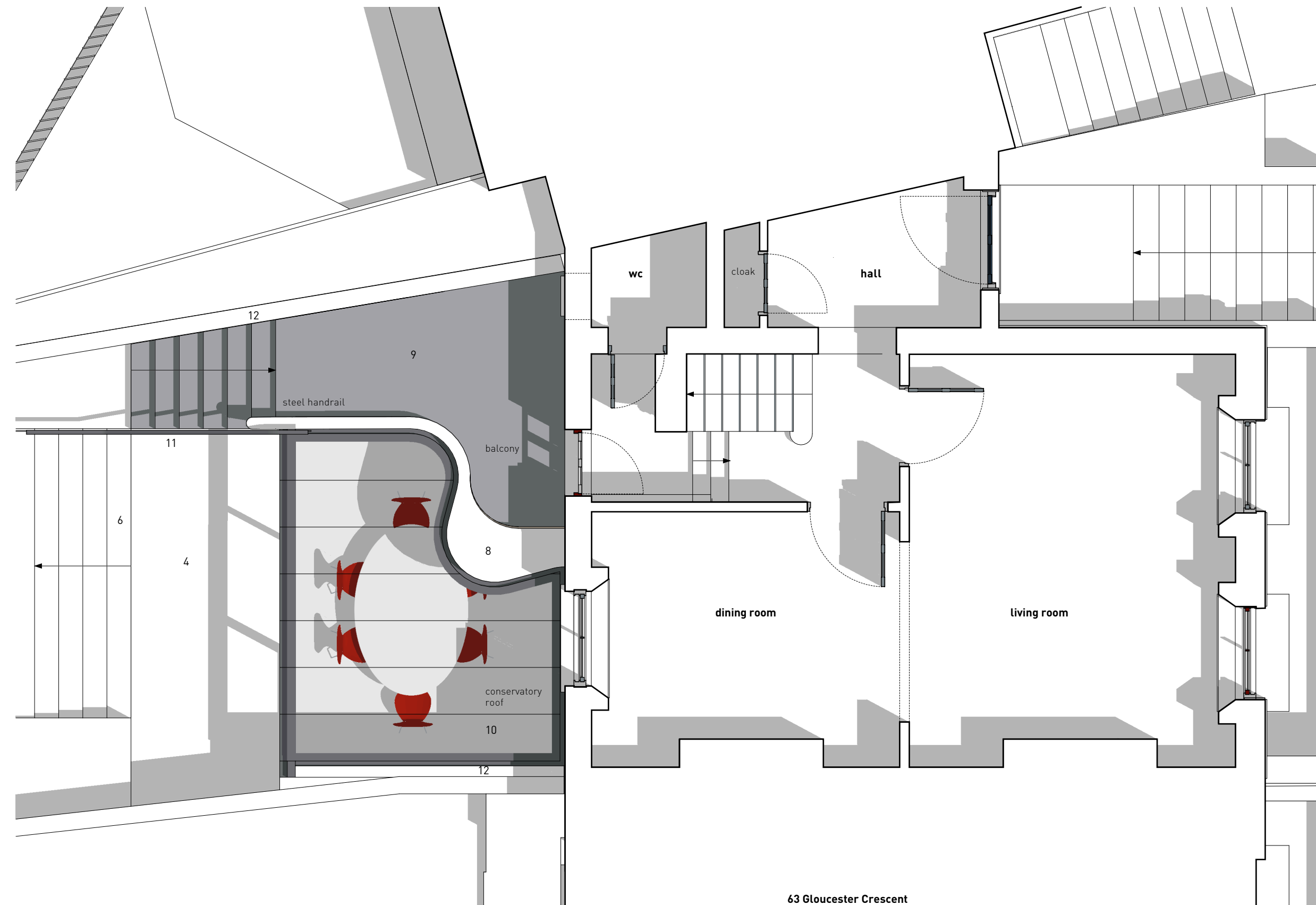
PLANNING

The information on this drawing is copyright of Barnaby Gunning Architects.  
Do not scale from this drawing.  
Dimensions are to be verified on site prior to construction.

### Notes

#### Materials Key

- 1 London stock brickwork
- 2 Painted timber frame sash window
- 3 Timber panelled door with vision panels
- 4 Precast stone paving
- 5 Painted steel stair
- 6 Concrete steps
- 7 Powder-coated aluminium sliding doors
- 8 Beam clad in solid surfacing material
- 9 Slate tiling
- 10 Glazed roof
- 11 glass balustrade
- 12 Lead sheet capping / gutter



Barnaby Gunning Architects

63 Loudoun Road, London NW8 0DQ, UK  
via Bellezza 7, 20136 Milano, Italy  
+[44] 20 73 72 24 24  
www.barnabygunning.com