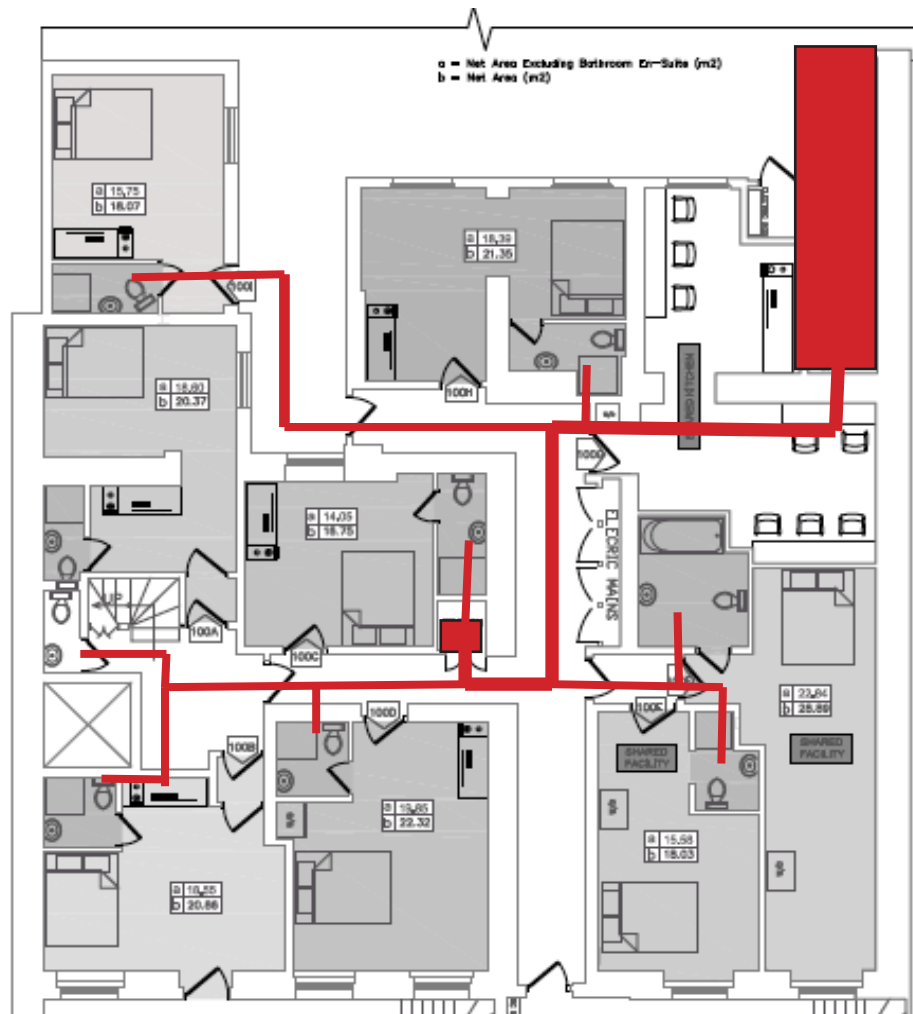
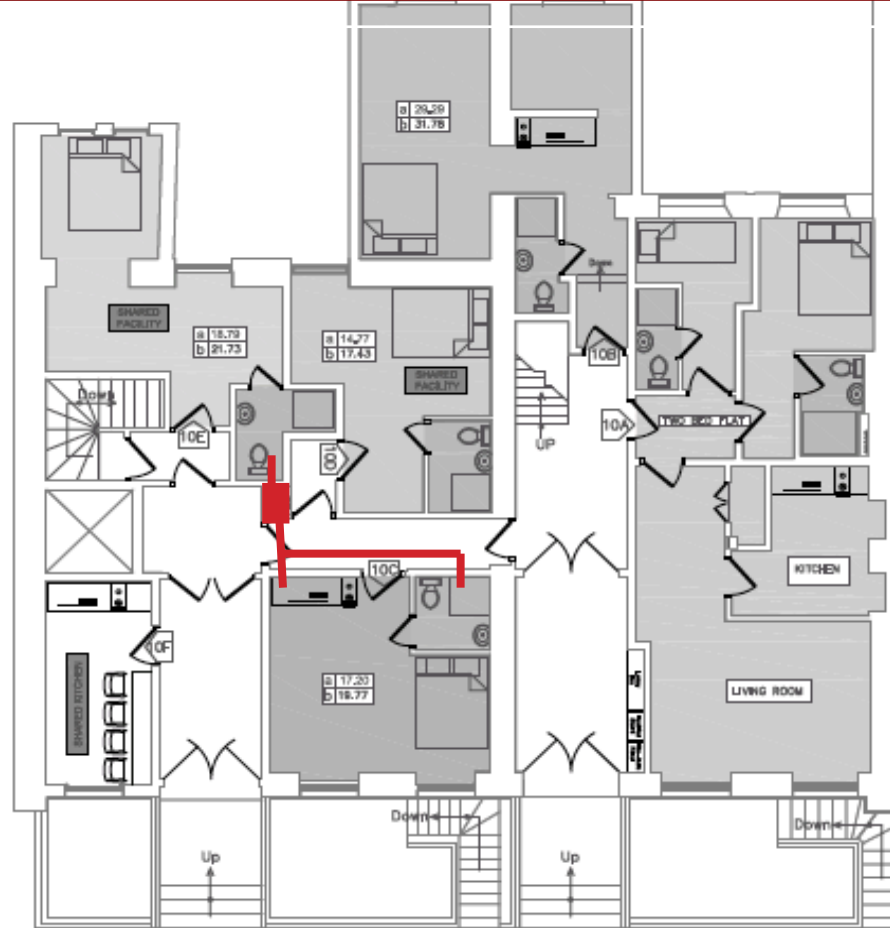


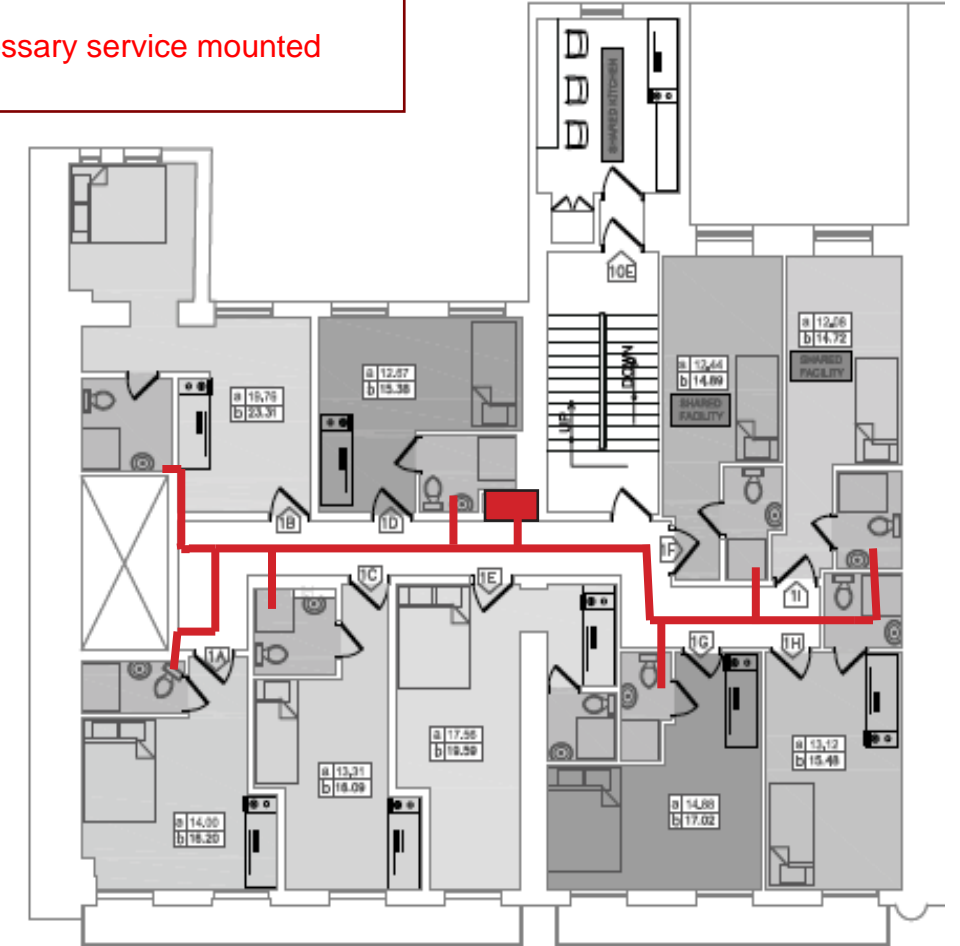
1. Pipes connected through vertical riser
2. On each floor pipes located within ceiling void positioned above suspended ceiling in teh central corridor
3. Bathrooms at ground level of 69 Guilford Street conected from below
4. Existing structure unaffected
5. All bathrooms positioned adjacent to the corridor to prevent unnecessary service mounted conduits within the rooms



LOWER GROUND FLOOR



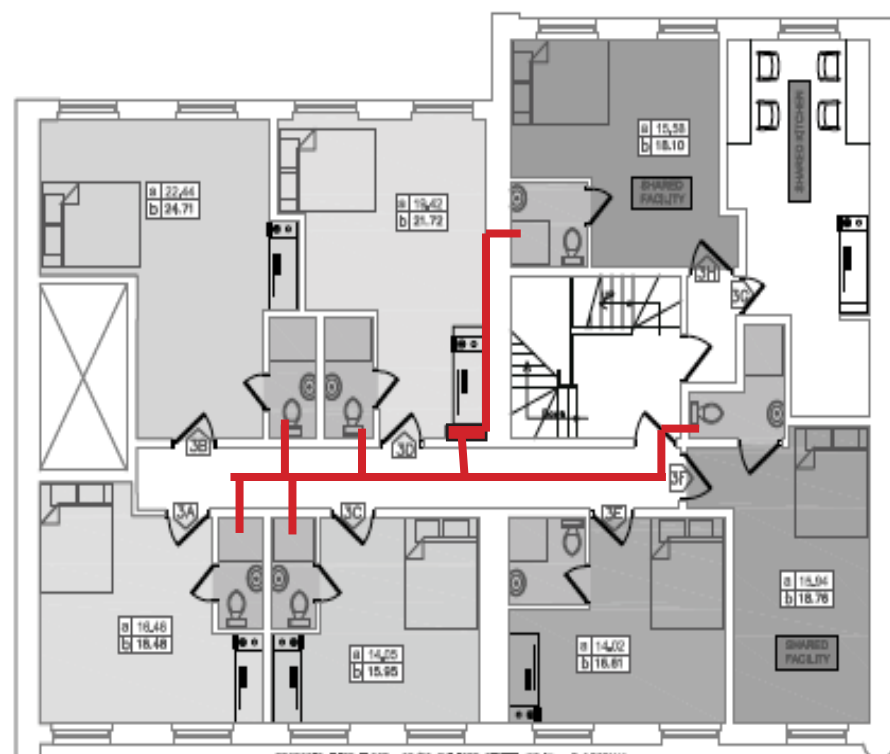
GROUND FLOOR



FIRST FLOOR



SECOND FLOOR



THIRD FLOOR



FOURTH FLOOR

68-69 Guilford Street
London
WC1N 1DF

Service Route Plan

Drawing No: SK/04