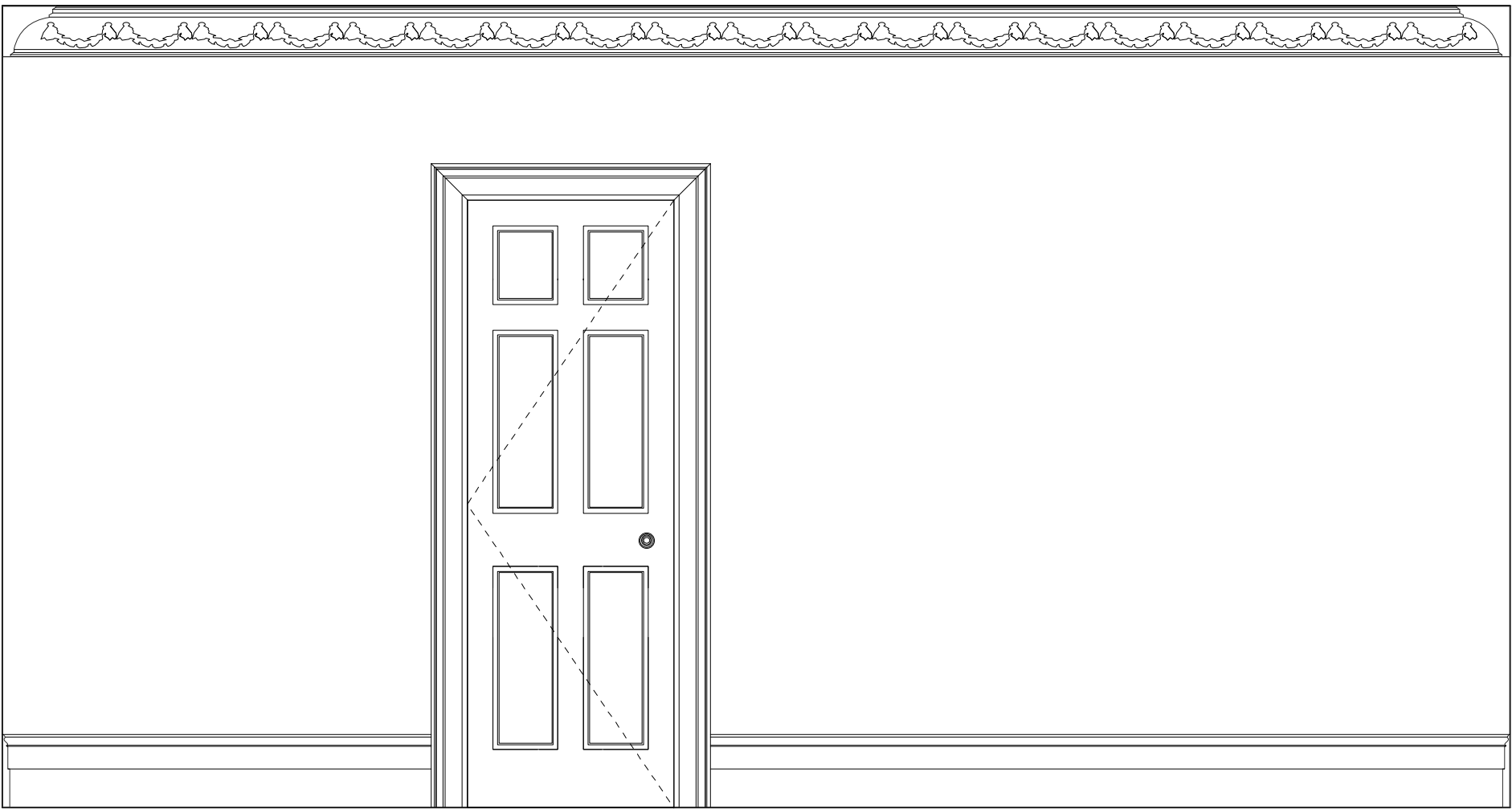
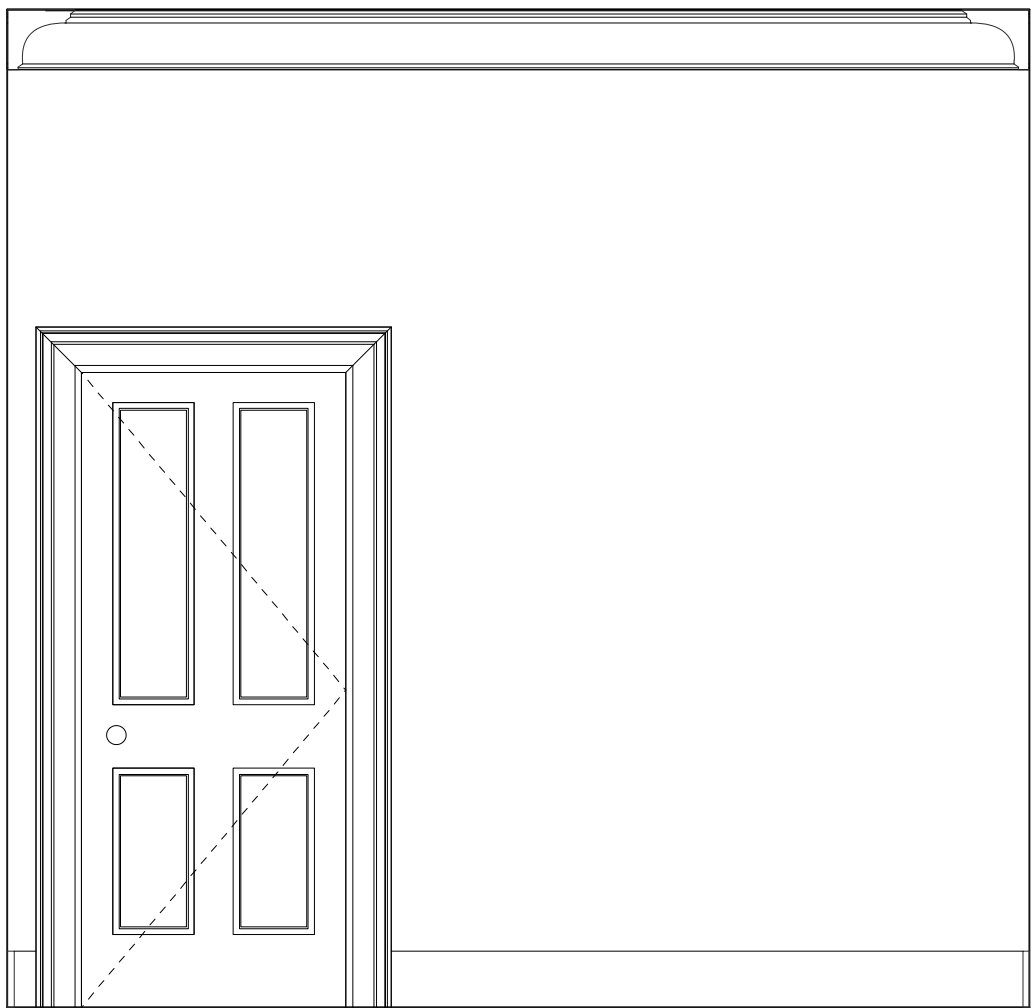


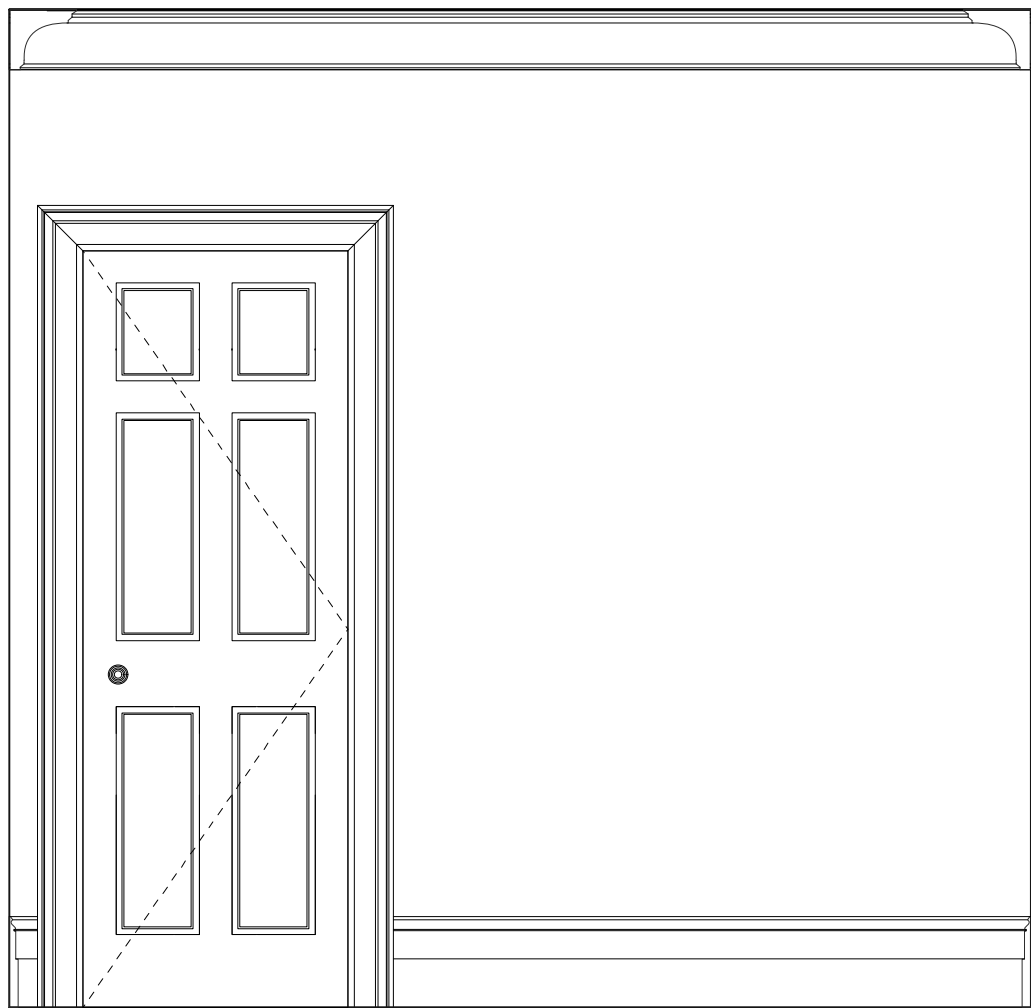
Internal Elevation G-1: GF Reception Room  
Existing



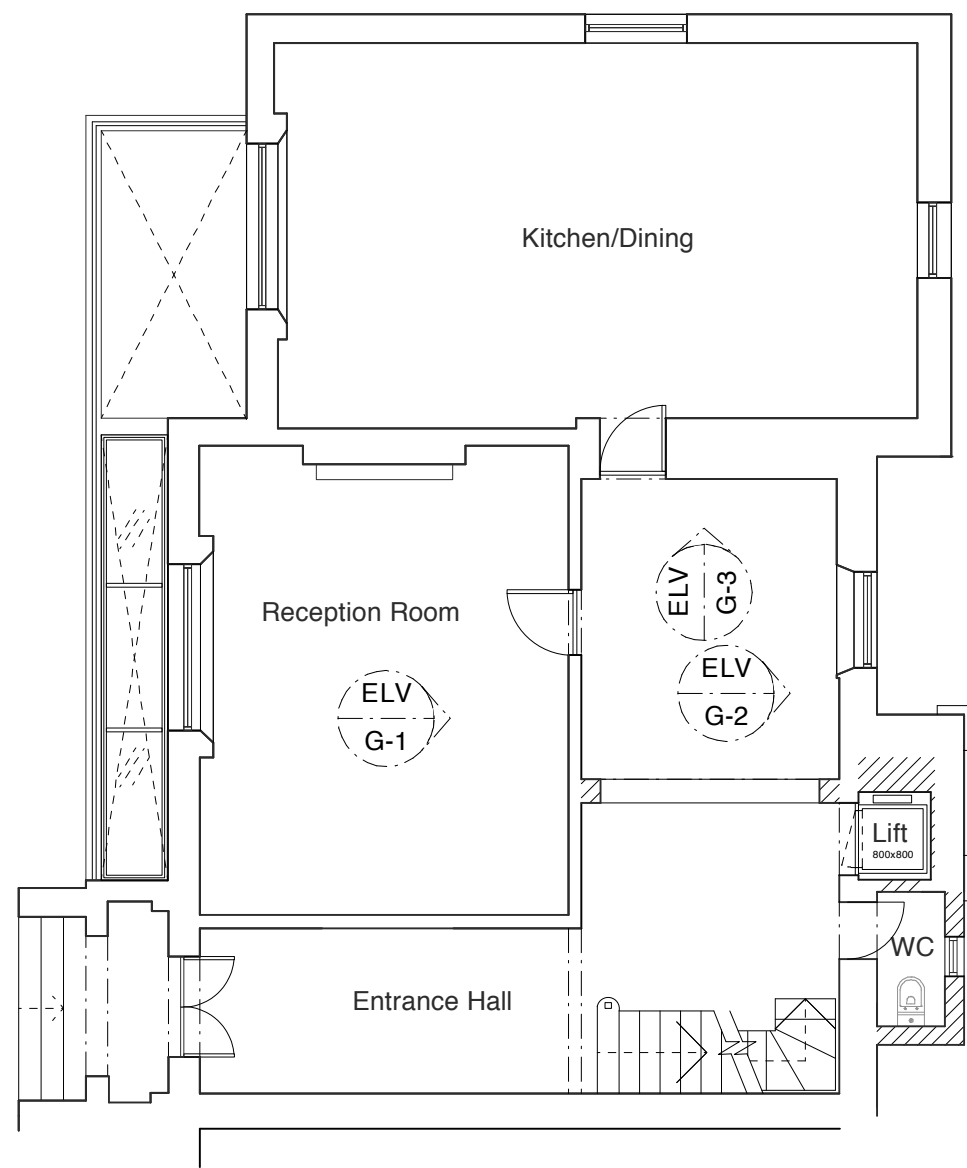
Internal Elevation G-1: GF Reception Room  
Proposed



Internal Elevation G-2: GF Entrance Hall  
Existing



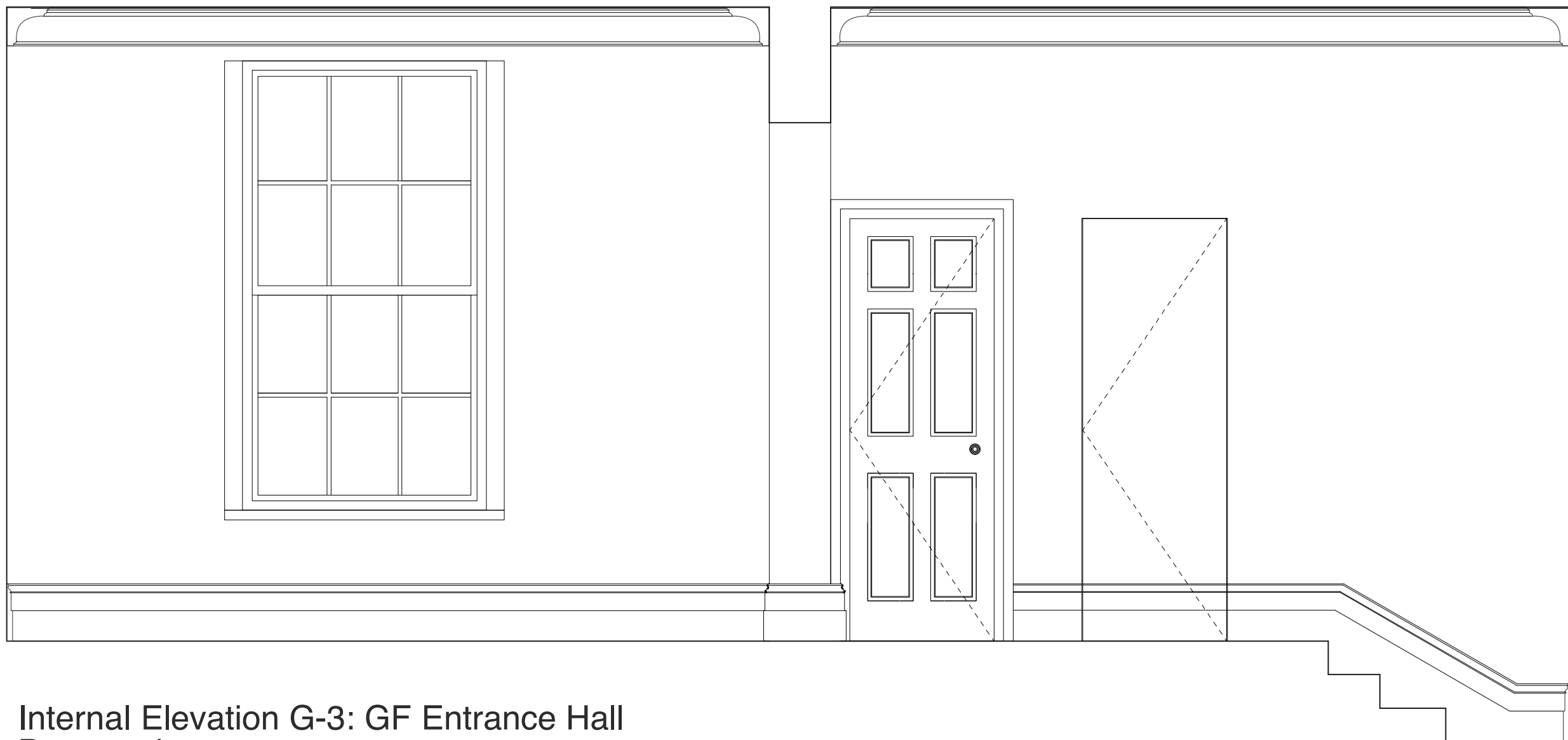
Internal Elevation G-2: GF Entrance Hall  
Proposed



Key Plan: Ground Floor  
1:100



Internal Elevation G-3: GF Entrance Hall  
Existing



Internal Elevation G-3: GF Entrance Hall  
Proposed

#### General Notes

All dimensions to be verified on site  
To be read in conjunction with all relevant documents  
In the event of discrepancy notify the Architect immediately  
This document is copyright of Hugh Cullum Architects Ltd

#### Issue Status

SK	Information	F	Feasibility	D	Design
P	Permissions	S	Scheme	T	Tender
C	Construction	E	Existing Condition		

#### DRAWING NOTE

Proposed door panel, architerave and skirting detail refer to  
**PA013-P516 Typical Detail**

(\_) Issued for Planning (12.12.11/YH)

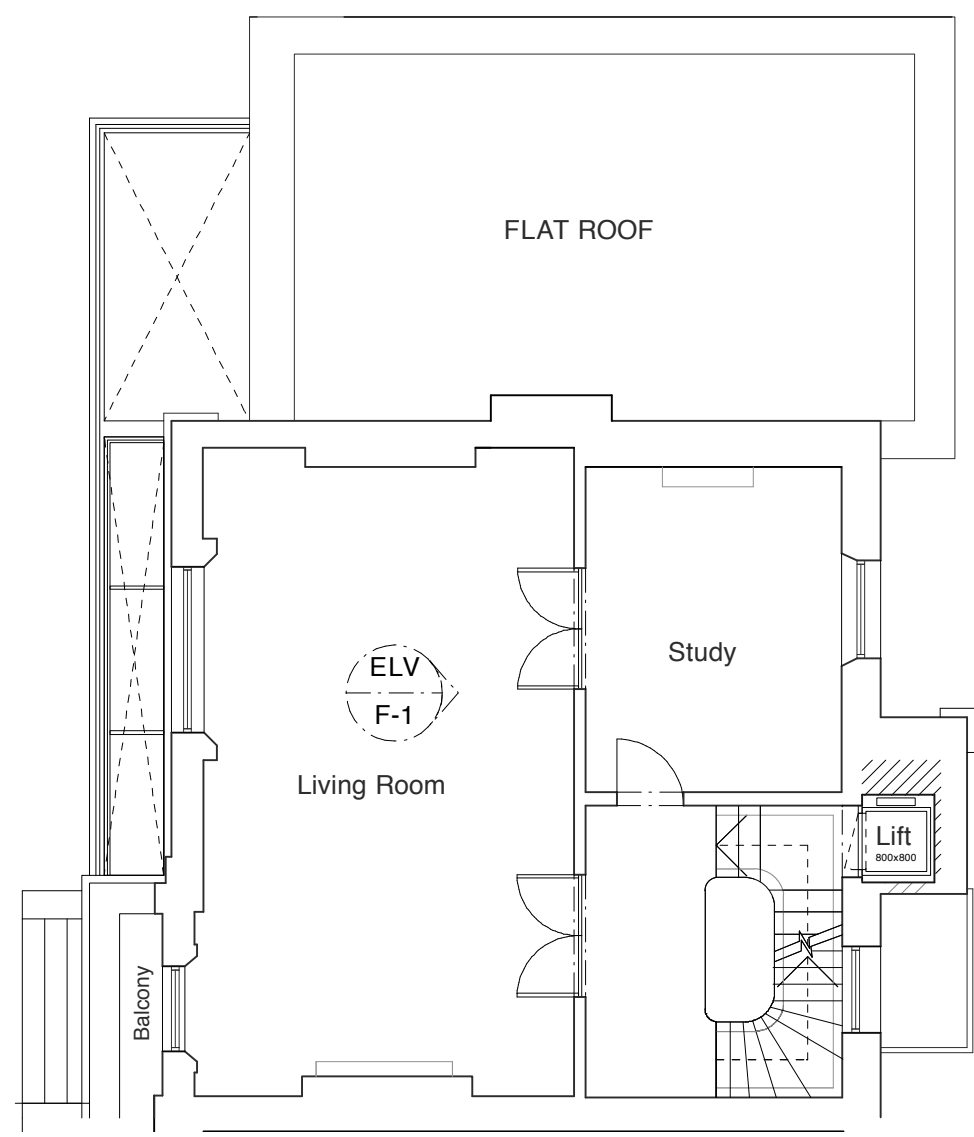
Revision: Information (date/drawn by)

**HUGH CULLUM**  
ARCHITECTS LTD  
Bloomsbury Design  
61b Judd Street  
London WC1H 9QT  
t 020 7383 7647  
f 020 7387 7645  
mail@hughcullum.com

13 Prince Albert Road

Planning: Proposals  
GF Internal Elevations  
1:25@A1 November 2011

**PA013-P514**(\_)



Key Plan: First Floor  
1:100



Internal Elevation F-1: FF Living Room  
Existing



Internal Elevation F-1: FF Living Room  
Proposed

#### General Notes

All dimensions to be verified on site  
To be read in conjunction with all relevant documents  
In the event of discrepancy notify the Architect immediately  
This document is copyright of Hugh Cullum Architects Ltd

#### Issue Status

SK	Information	F	Feasibility	D	Design
P	Permissions	S	Scheme	T	Tender
C	Construction	E	Existing Condition		

#### DRAWING NOTE

Proposed door panel, architrave and skirting detail refer to  
**PA013-P516 Typical Detail**

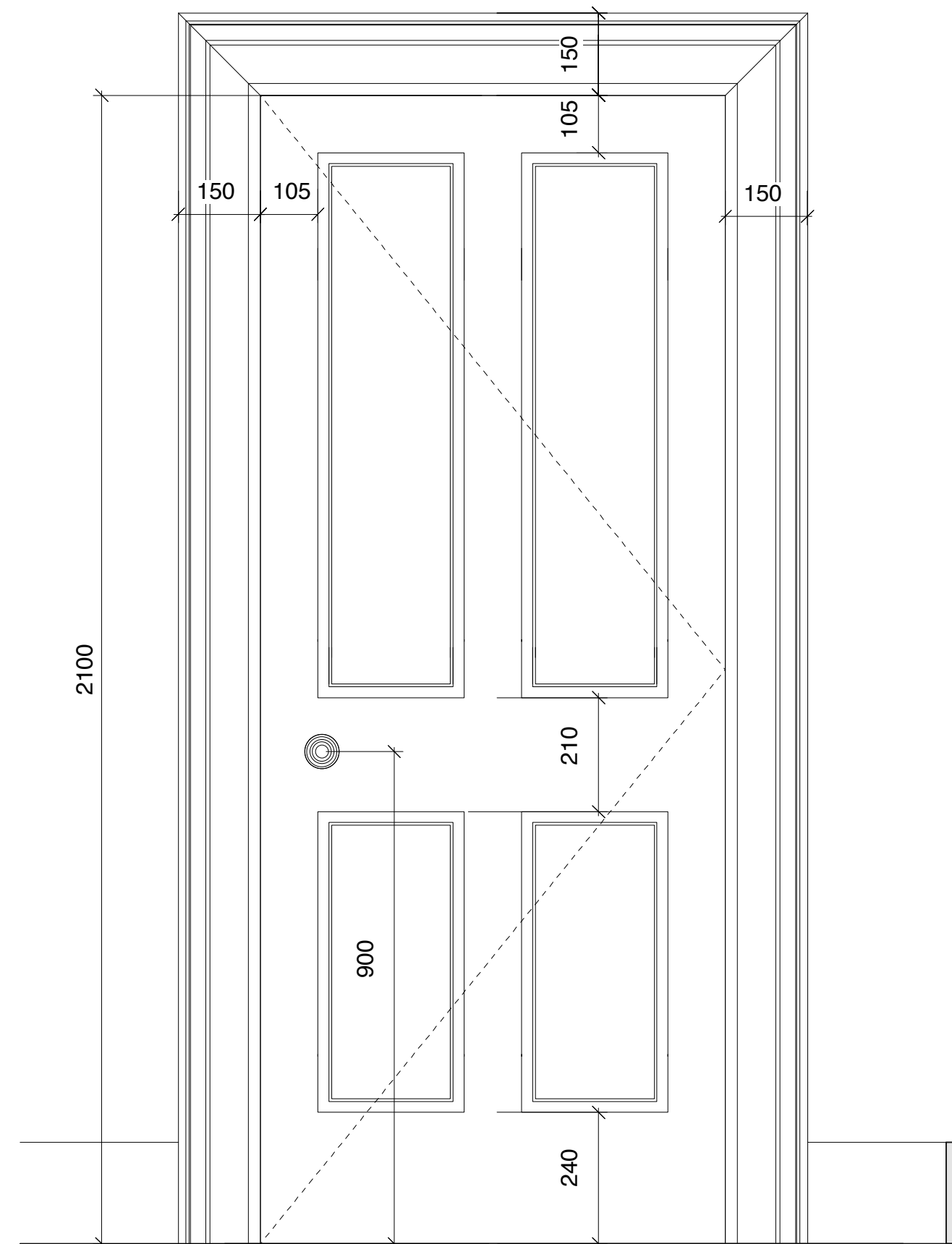
(\_) Issued for Planning (12.12.11/YH)  
Revision: Information (date/drawn by)

**HUGH CULLUM**  
ARCHITECTS LTD  
Bloomsbury Design  
61b Judd Street  
London WC1H 9QT  
t 020 7383 7647  
f 020 7387 7645  
mail@hughcullum.com

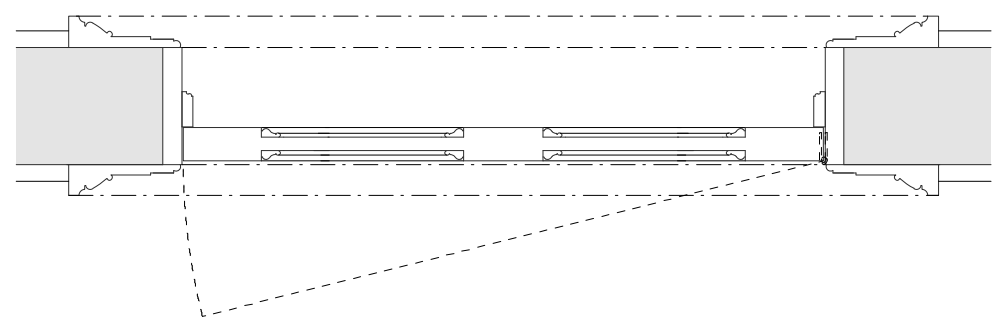
13 Prince Albert Road

Planning: Proposals  
FF Internal Elevations  
1:25@A1 November 2011

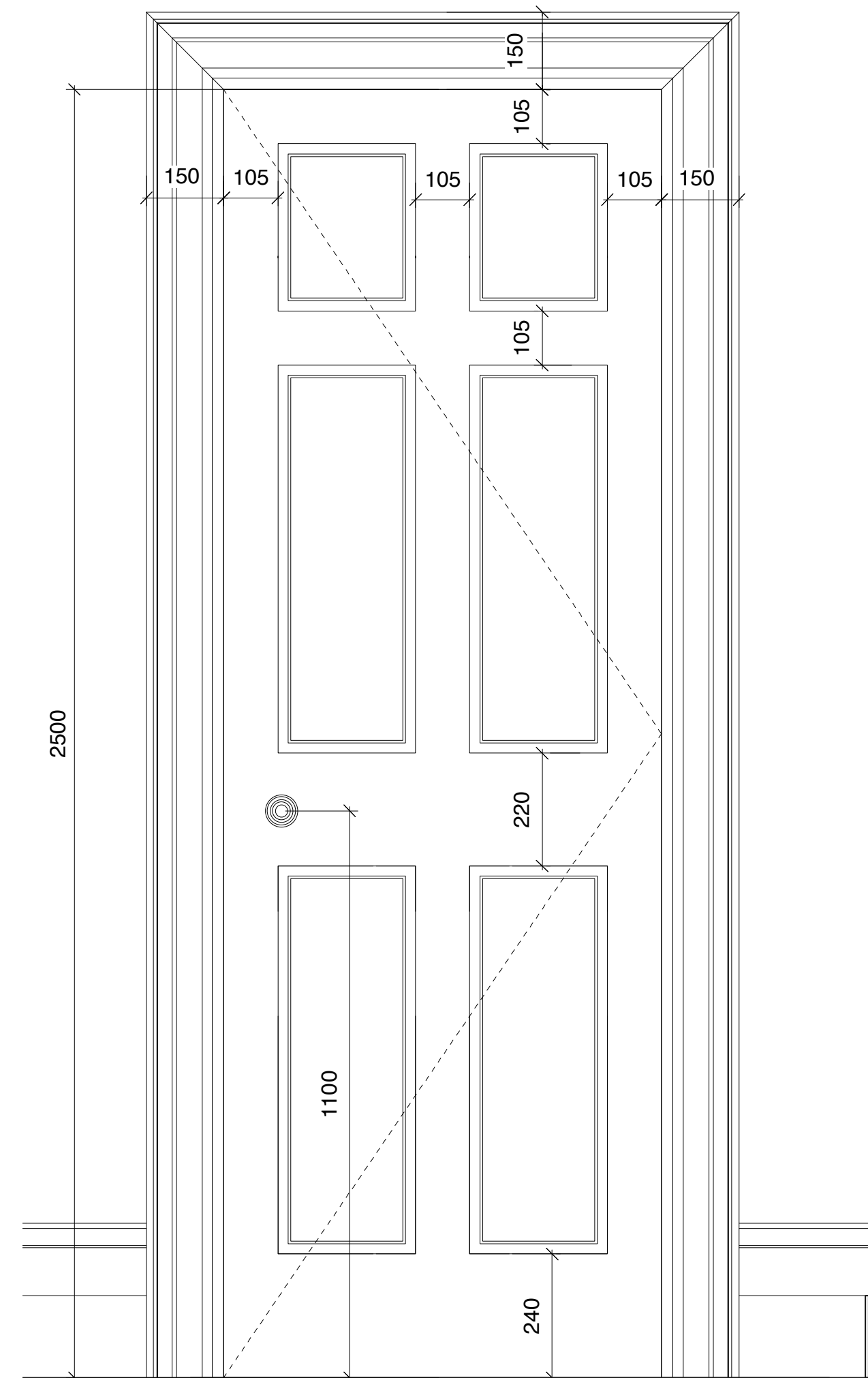
**PA013-P515(\_)**



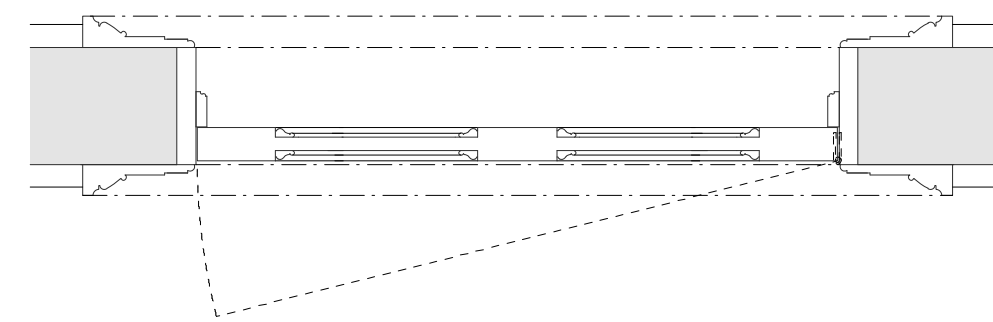
Typical Door, Architrave and Skirting Elevation 1:10 Existing



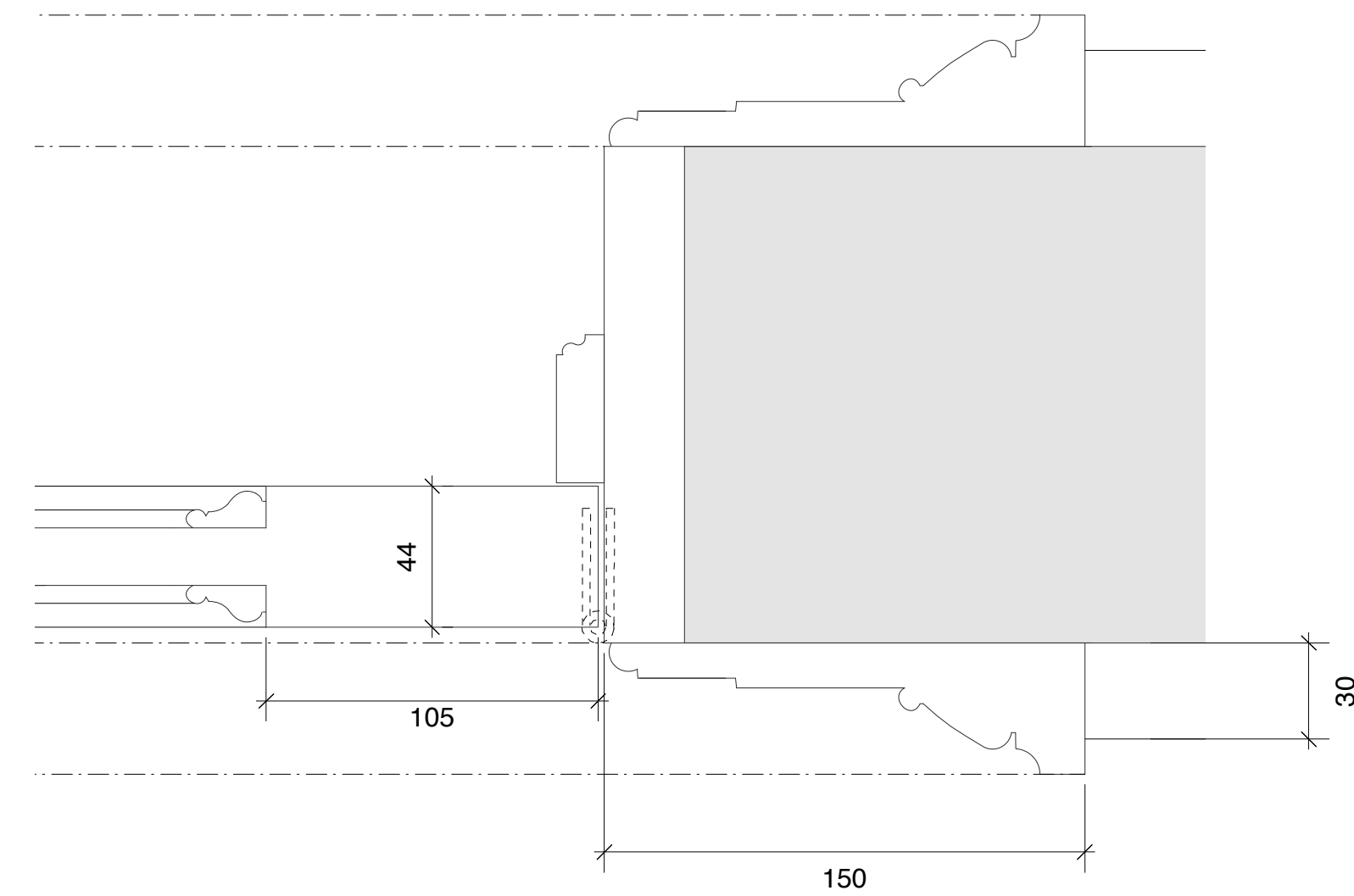
Typical Door, Architrave and Skirting Plan 1:10 Existing



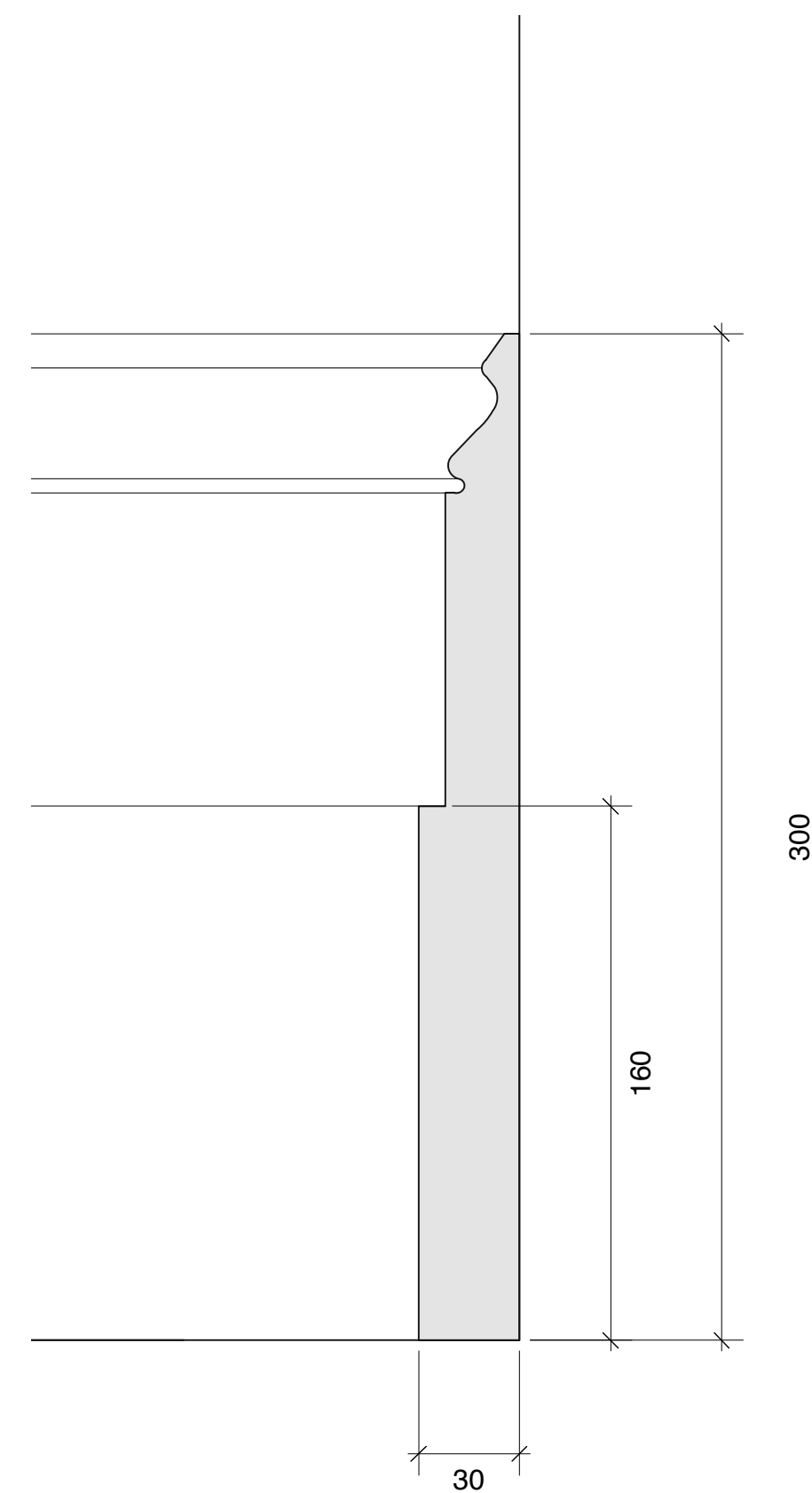
Typical Door, Architrave and Skirting Elevation 1:10 Proposed



Typical Door, Architrave and Skirting Plan 1:10 Proposed



Typical Door, Architrave and Skirting Detail 1:2 Existing and Proposed



Typical Ground Floor Skirting Detail 1:2 Proposed

#### General Notes

All dimensions to be verified on site  
To be read in conjunction with all relevant documents  
In the event of discrepancy notify the Architect immediately  
This document is copyright of Hugh Cullum Architects Ltd

#### Issue Status

SK	Information	F	Feasibility	D	Design
P	Permissions	S	Scheme	T	Tender
C	Construction	E	Existing Condition		

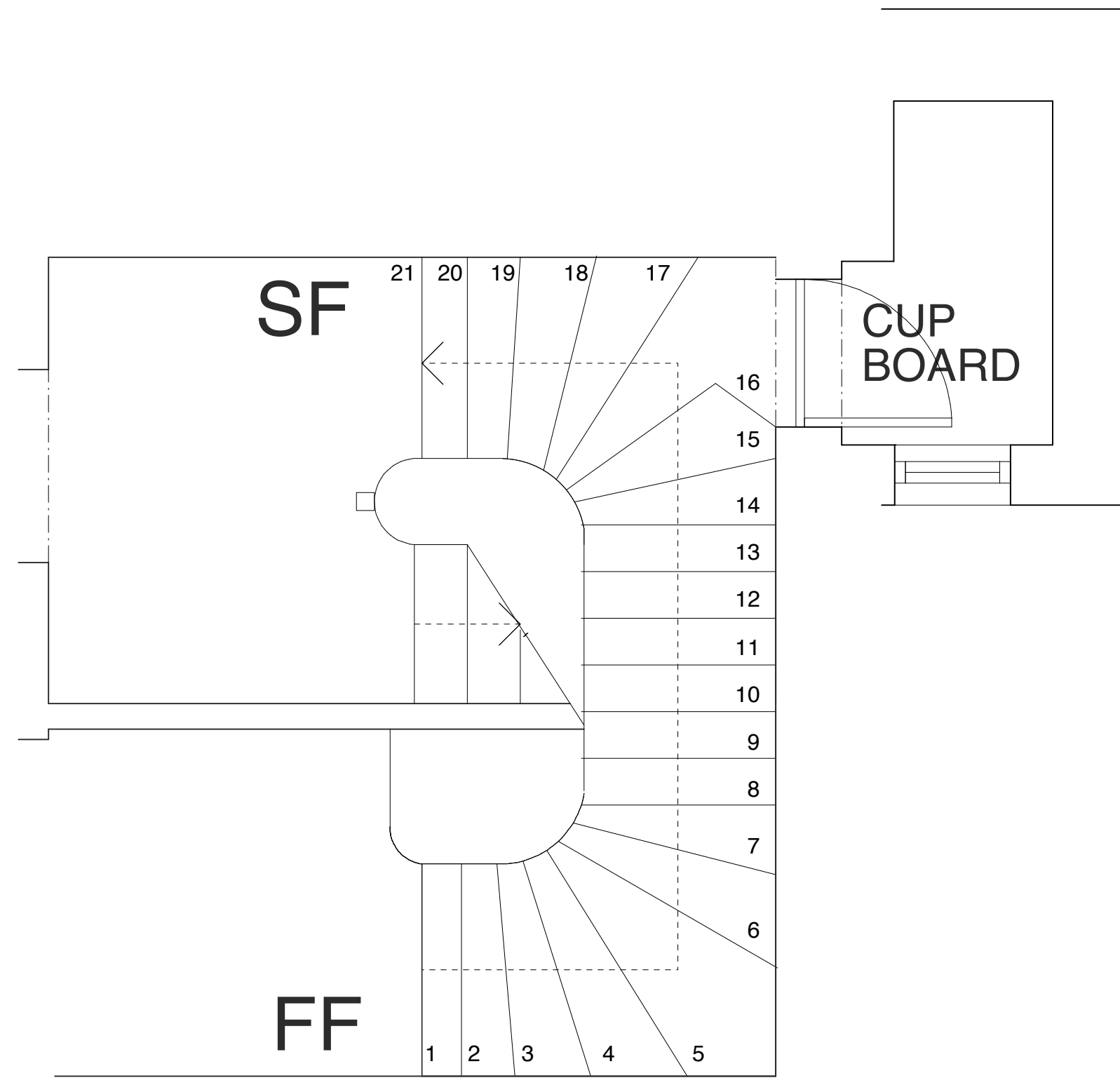
(\_) Issued for Planning (12.12.11/YH)  
Revision: Information (date/drawn by)

HUGH CULLUM  
ARCHITECTS LTD  
Bloomsbury Design  
61b Judd Street  
London WC1H 9QT  
t 020 7383 7647  
f 020 7387 7645  
mail@hughcullum.com

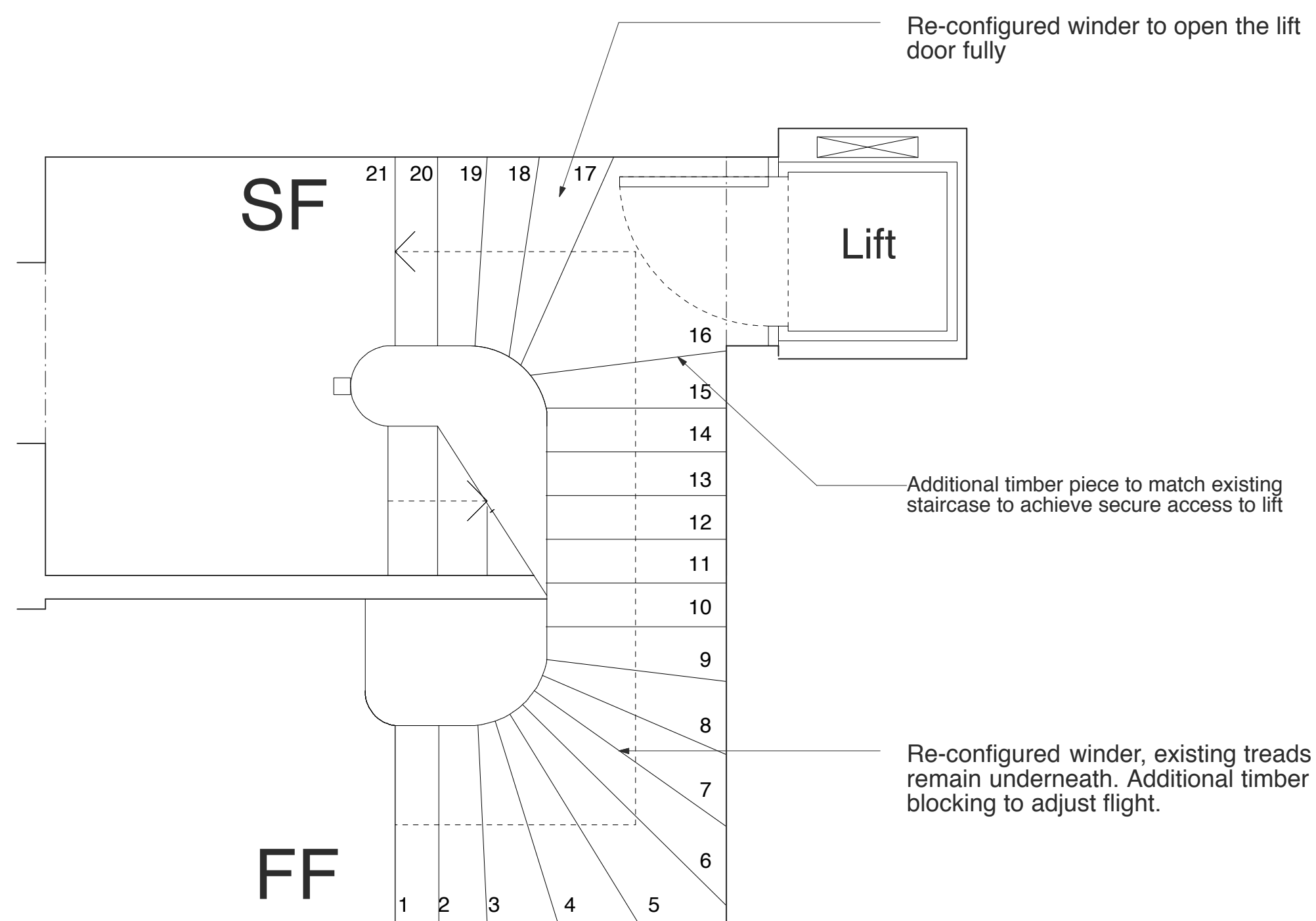
13 Prince Albert Road

Planning: Proposals  
Typical Door/Architrave/Skirting Details  
1:2/1:10@A1 November 2011

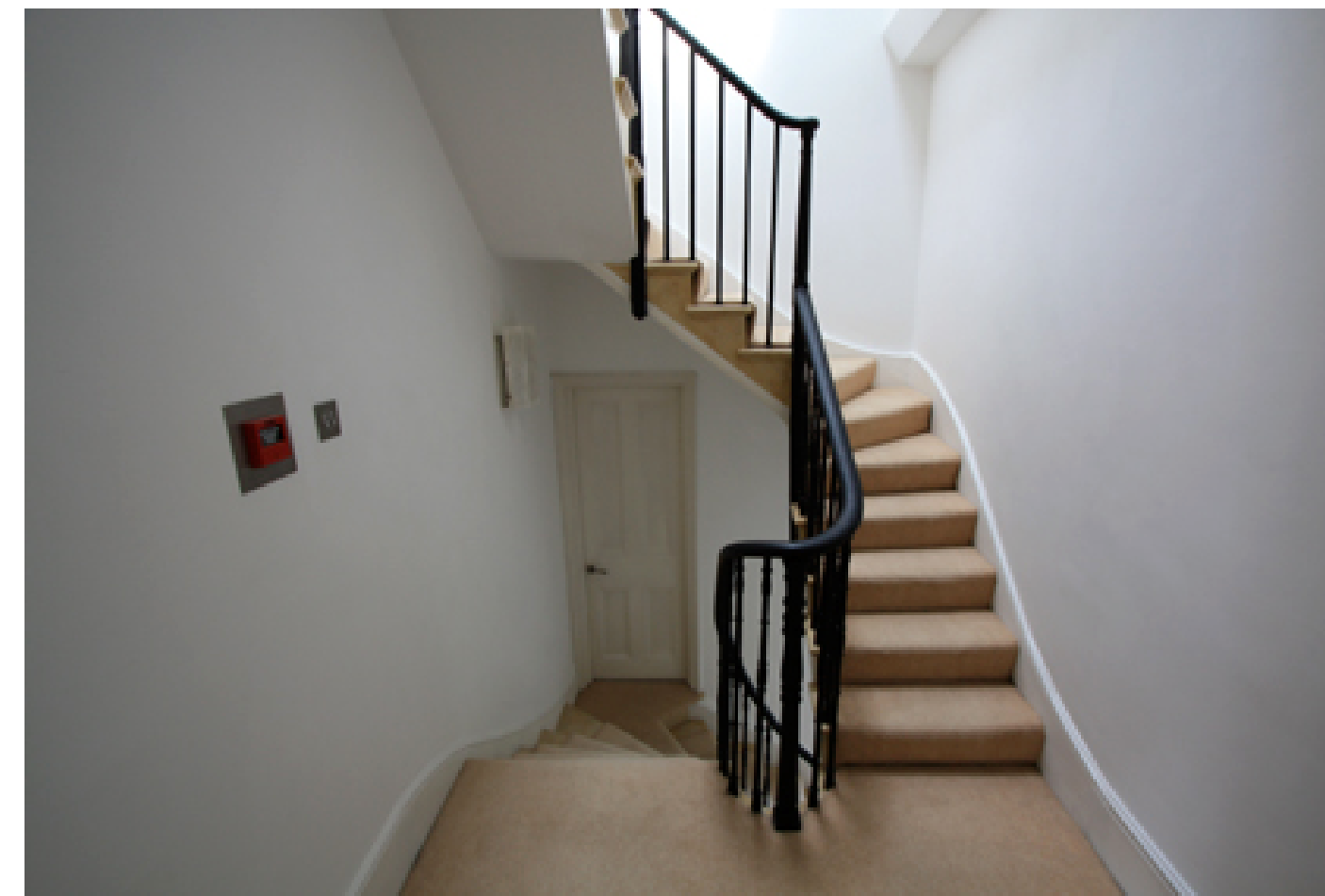
PA013-P516(\_)



FF-SF Staircase Plan 1:25  
Existing



FF-SF Staircase Plan 1:25  
Proposed



FF-SF Existing Staircase Photos

#### General Notes

All dimensions to be verified on site  
To be read in conjunction with all relevant documents  
In the event of discrepancy notify the Architect immediately  
This document is copyright of Hugh Cullum Architects Ltd

#### Issue Status

SK	Information	F	Feasibility	D	Design
P	Permissions	S	Scheme	T	Tender
C	Construction	E	Existing Condition		

(\_) Issued for Planning (12.12.11/YH)

Revision: Information (date/drawn by)

HUGH CULLUM  
ARCHITECTS LTD  
Bloomsbury Design  
61b Judd Street  
London WC1H 9QT  
t 020 7383 7647  
f 020 7387 7645  
mail@hughcullum.com

13 Prince Albert Road

Planning: Proposals  
Staircase Detail  
1:25@A1 November 2011

PA013-P517(\_)