

Front Elevation

General Notes

All dimensions to be verified on site
To be read in conjunction with all relevant documents
In the event of discrepancy notify the Architect immediately
This document is copyright of Hugh Cullum Architects Ltd

Issue	Status	F	Feasibility	D	Design
SK	Information	P	Permissions	S	Scheme
P	Permissions	T	Tender		
C	Construction	E	Existing Condition		

DRAWING KEY

- Existing
- Proposed
- Demolished



HUGH CULLUM
ARCHITECTS LTD
Bloomsbury Design
61b Judd Street
London WC1H 9QT
t 020 7383 7647
f 020 7387 7645
mail@hughcullum.com

13 Prince Albert Road
Planning: Proposals
Front Elevation
1:50@A1 November 2011
PA013-P508(_)

Rear Elevation

General Notes

All dimensions to be verified on site
To be read in conjunction with all relevant documents
In the event of discrepancy notify the Architect immediately
This document is copyright of Hugh Cullum Architects Ltd

Issue Status
SK Information F Feasibility D Design
P Permissions S Scheme T Tender
C Construction E Existing Condition

DRAWING KEY

Existing

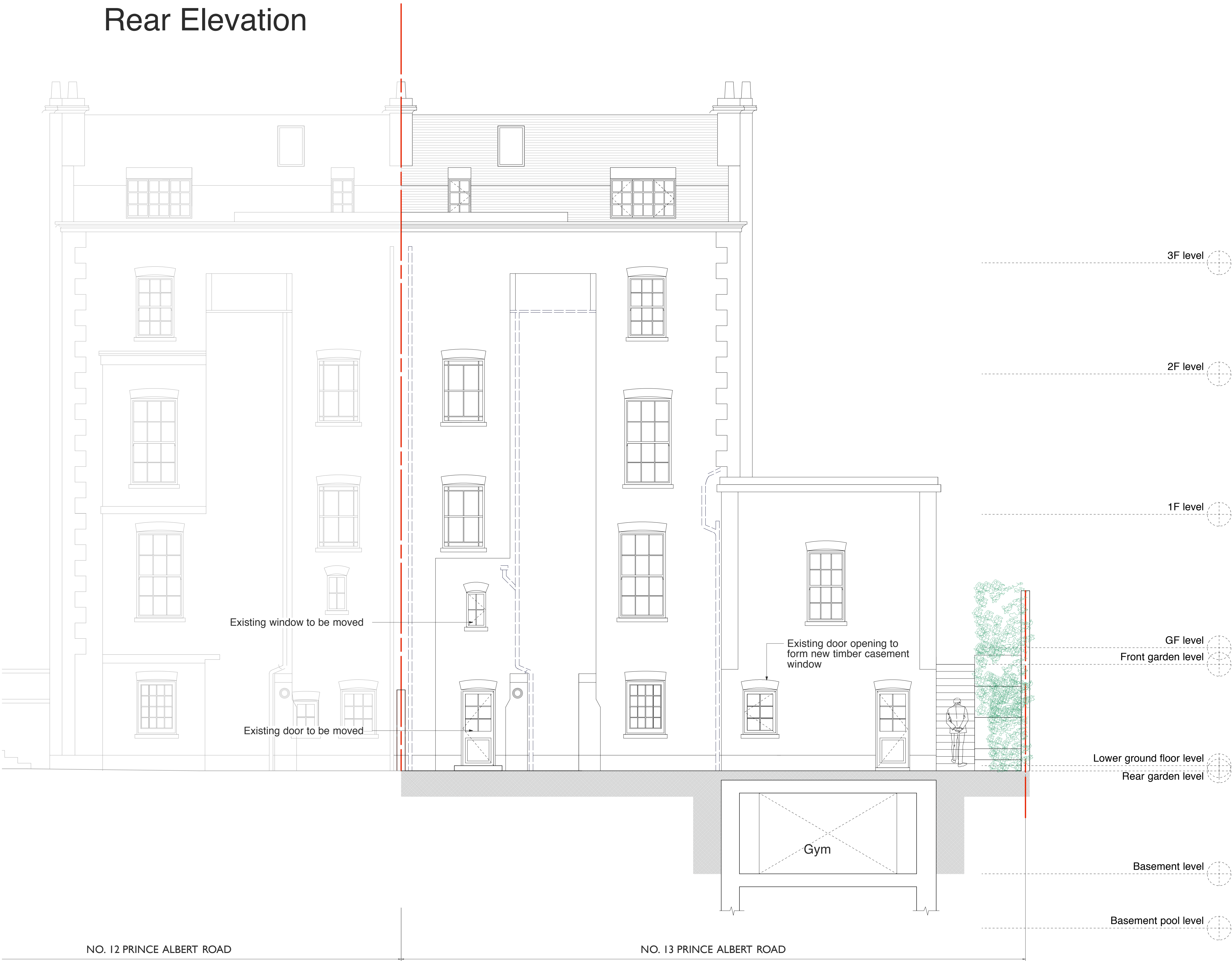
Proposed

Demolished

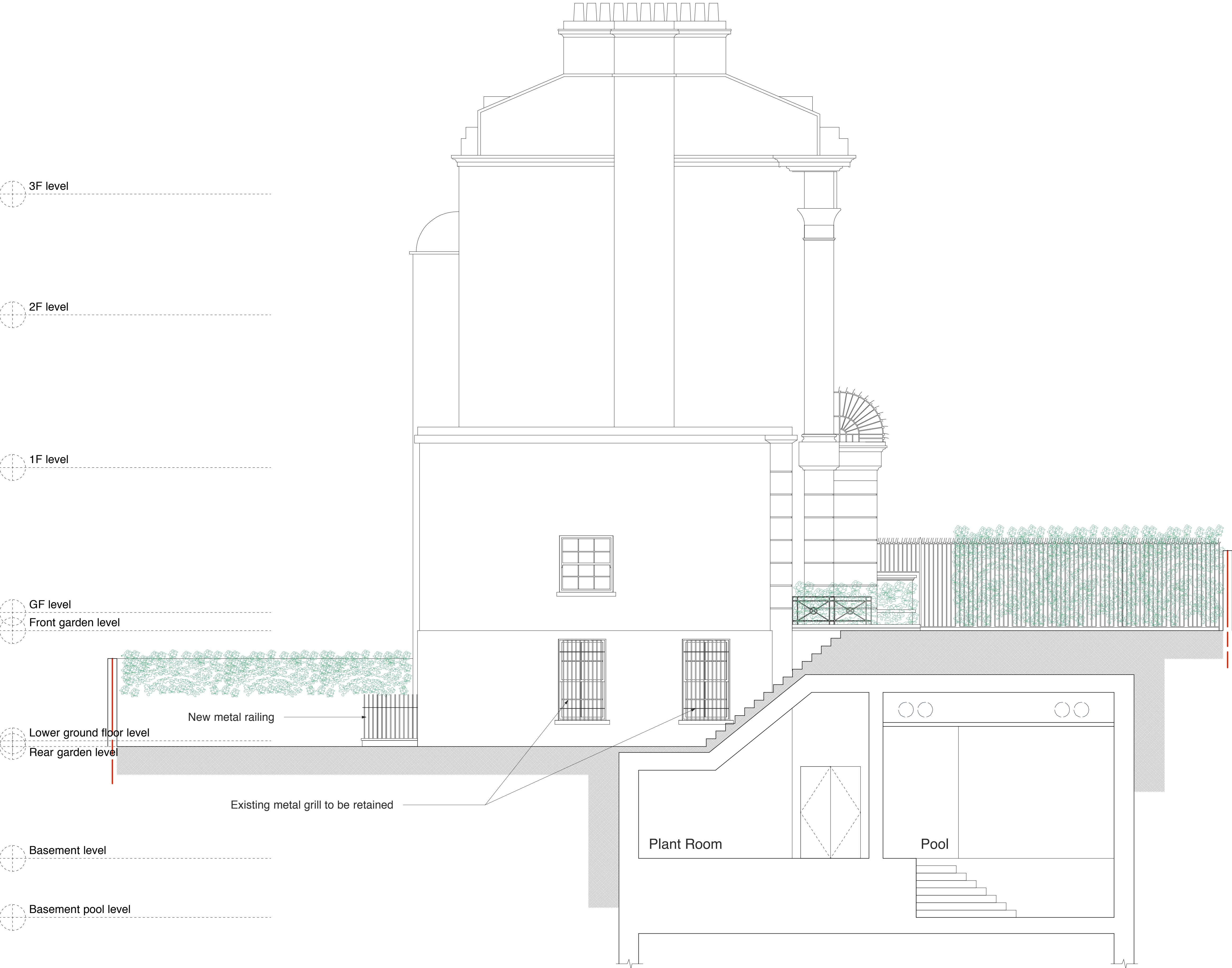
(_) Issued for Planning (12.12.11/YH)
Revision: Information (date/drawn by)

HUGH CULLUM
ARCHITECTS LTD
Bloomsbury Design
61b Judd Street
London WC1H 9QT
t 020 7383 7647
f 020 7387 7645
mail@hughcullum.com

13 Prince Albert Road
Planning: Proposals
Rear Elevation
1:50@A1 November 2011
PA013-P509(_)



Side Elevation



General Notes

All dimensions to be verified on site
To be read in conjunction with all relevant documents
In the event of discrepancy notify the Architect immediately
This document is copyright of Hugh Cullum Architects Ltd

Issue	Status	F	Feasibility	D	Design
SK	Information	F	Feasibility	D	Design
P	Permissions	S	Scheme	T	Tender
C	Construction	E	Existing Condition		

DRAWING KEY

Existing

Proposed

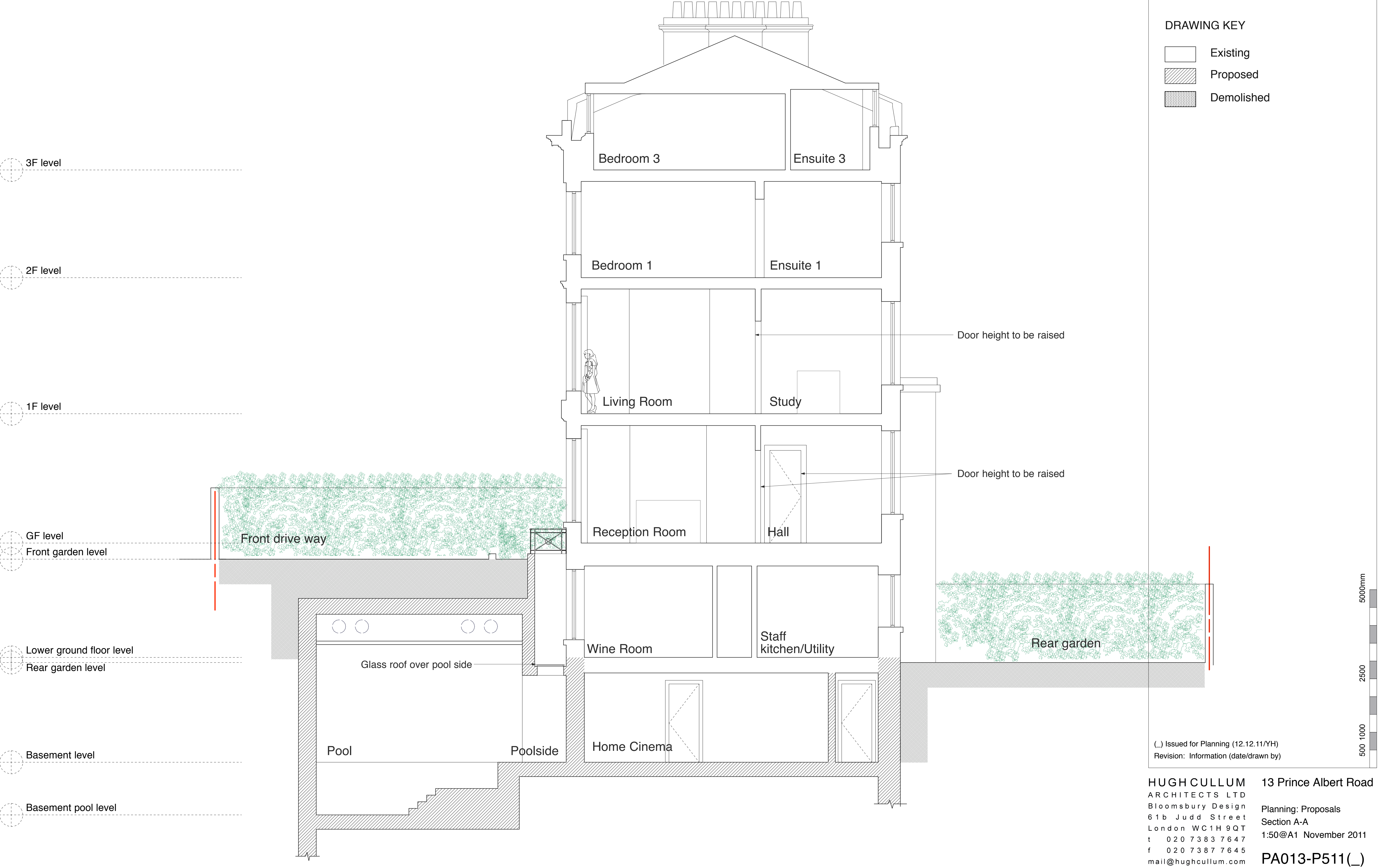
Demolished

(_) Issued for Planning (12.12.11/YH)
Revision: Information (date/drawn by)

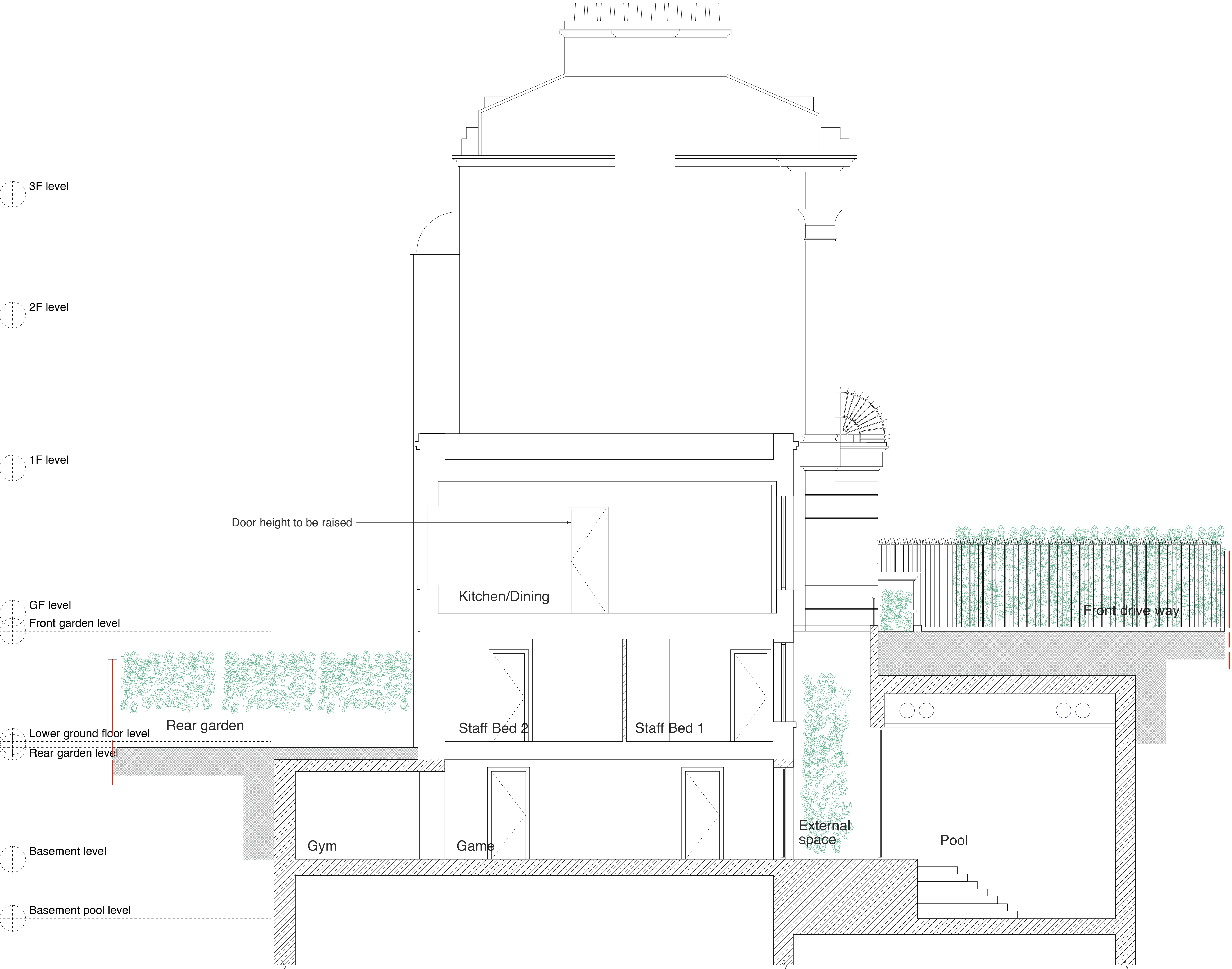
HUGH CULLUM
ARCHITECTS LTD
Bloomsbury Design
61b Judd Street
London WC1H 9QT
t 020 7383 7647
f 020 7387 7645
mail@hughcullum.com

13 Prince Albert Road
Planning: Proposals
Side Elevation
1:50@A1 November 2011
PA013-P510(_)

Section A - A



Section B - B



General Notes

All dimensions to be verified on site
To be read in conjunction with all relevant documents
In the event of discrepancy notify the Architect immediately
This document is copyright of Hugh Cullum Architects Ltd

Issue	Status	F	D
SK	Information	Feasibility	Design
P	Permissions	S Scheme	T Tender
C	Construction	E Existing Condition	

DRAWING KEY

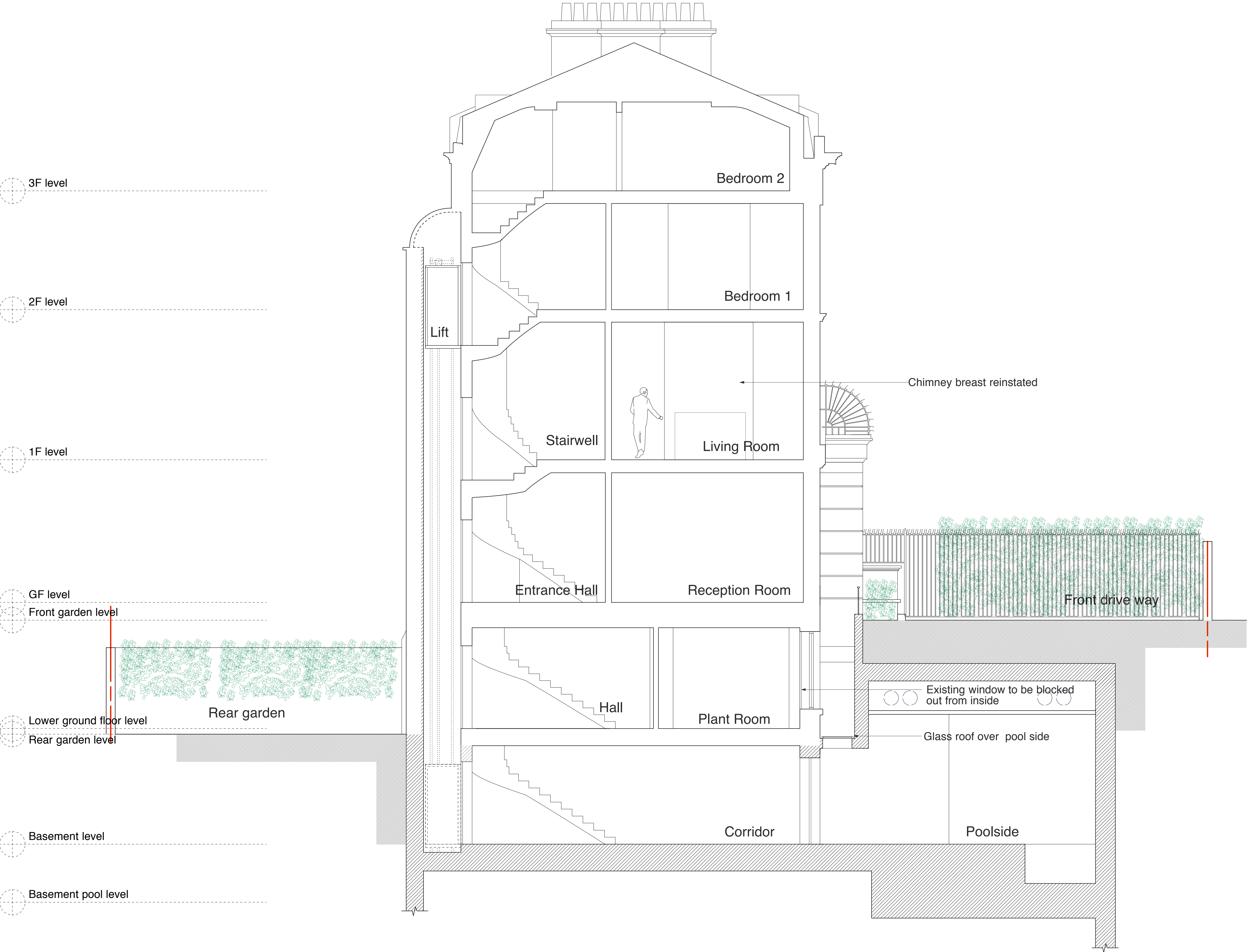
- Existing
- Proposed
- Demolished

(_) Issued for Planning (12.12.11/YH)
Revision: Information (date/drawn by)

HUGH CULLUM
ARCHITECTS LTD
Bloomsbury Design
61b Judd Street
London WC1H 9QT
t 020 7383 7647
f 020 7387 7645
mail@hughcullum.com

13 Prince Albert Road
Planning: Proposals
Section B-B
1:50@A1 November 2011
PA013-P512(_)

Section C - C



General Notes

All dimensions to be verified on site
To be read in conjunction with all relevant documents
In the event of discrepancy notify the Architect immediately
This document is copyright of Hugh Cullum Architects Ltd

Issue	Status	F	Feasibility	D	Design
SK	Information				
P	Permissions	S	Scheme	T	Tender
C	Construction	E	Existing Condition		

DRAWING KEY

- Existing
- Proposed
- Demolished

(_) Issued for Planning (12.12.11/YH)
Revision: Information (date/drawn by)

HUGH CULLUM
ARCHITECTS LTD
Bloomsbury Design
61b Judd Street
London WC1H 9QT
t 020 7383 7647
f 020 7387 7645
mail@hughcullum.com

13 Prince Albert Road
Planning: Proposals
Section C-C
1:50@A1 November 2011
PA013-P513(_)