

General Notes

All dimensions to be verified on site  
To be read in conjunction with all relevant documents  
In the event of discrepancy notify the Architect immediately  
This document is copyright of Hugh Cullum Architects Ltd

Issue

Status

SK Information

F Feasibility

D Design

P Permissions

S Scheme

T Tender

C Construction

E Existing Condition

DRAWING KEY

Existing

Proposed

Demolished

N

(\_) Issued for Planning (12.12.11/YH)

Revision: Information (date/drawn by)

HUGH CULLUM  
ARCHITECTS LTD  
Bloomsbury Design  
61b Judd Street  
London WC1H 9QT  
t 020 7383 7647  
f 020 7387 7645  
mail@hughcullum.com

13 Prince Albert Road  
Planning: Proposals  
Basement Plan  
1:50@A1 November 2011  
PA013-P501(\_)

The diagram is a detailed basement floor plan. It features a large 'Pool' area on the left, with 'New metal frame sliding doors with glazed infill' and a 'Line of roof light over Poolside'. Adjacent to the pool is a 'Lightwell' containing a small garden area. To the right of the lightwell is a 'Plant Room'. Further right are the 'Game' and 'Gym' rooms. Below the pool area is a 'Home Cinema' room, which is connected to a 'Corridor'. The corridor leads to a 'Store' room and a 'Changing / Shower Room'. A 'Lift' (800x800) is located near the store. The plan is bounded by section lines A, B, and C on the left and right. A scale bar at the bottom right indicates dimensions of 500, 1000, 2500, and 5000mm. A north arrow is also present.

Basement Floor

General Notes

All dimensions to be verified on site  
 To be read in conjunction with all relevant documents  
 In the event of discrepancy notify the Architect immediately  
 This document is copyright of Hugh Cullum Architects Ltd

Issue	Status	F	D
SK	Information	Feasibility	Design
P	Permissions	Scheme	Tender
C	Construction	Existing Condition	

**DRAWING KEY**

Existing

Proposed

Demolished

500

1000

2500

5000mm

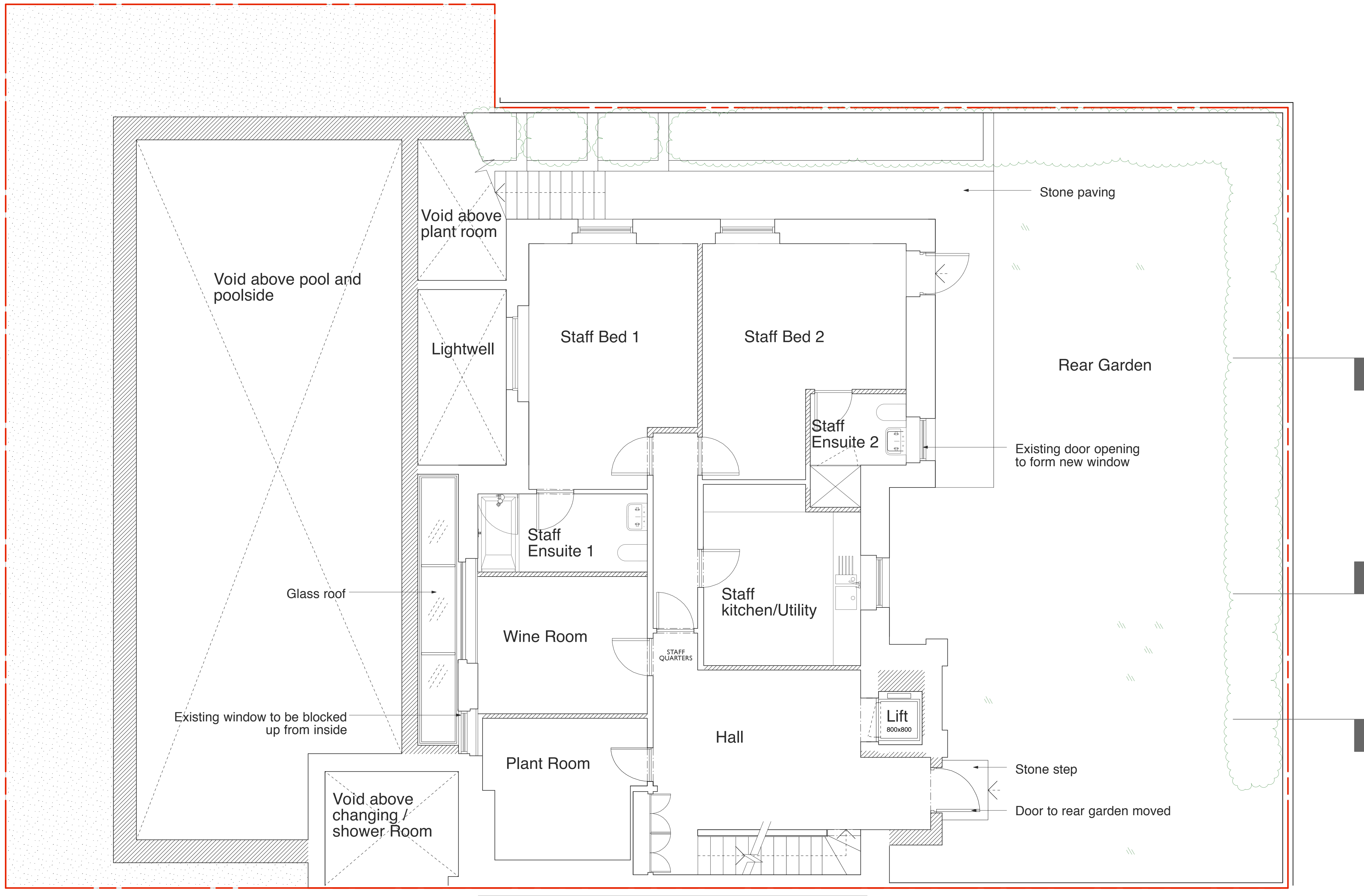
(\_) Issued for Planning (12.12.11/YH)  
 Revision: Information (date/drawn by)

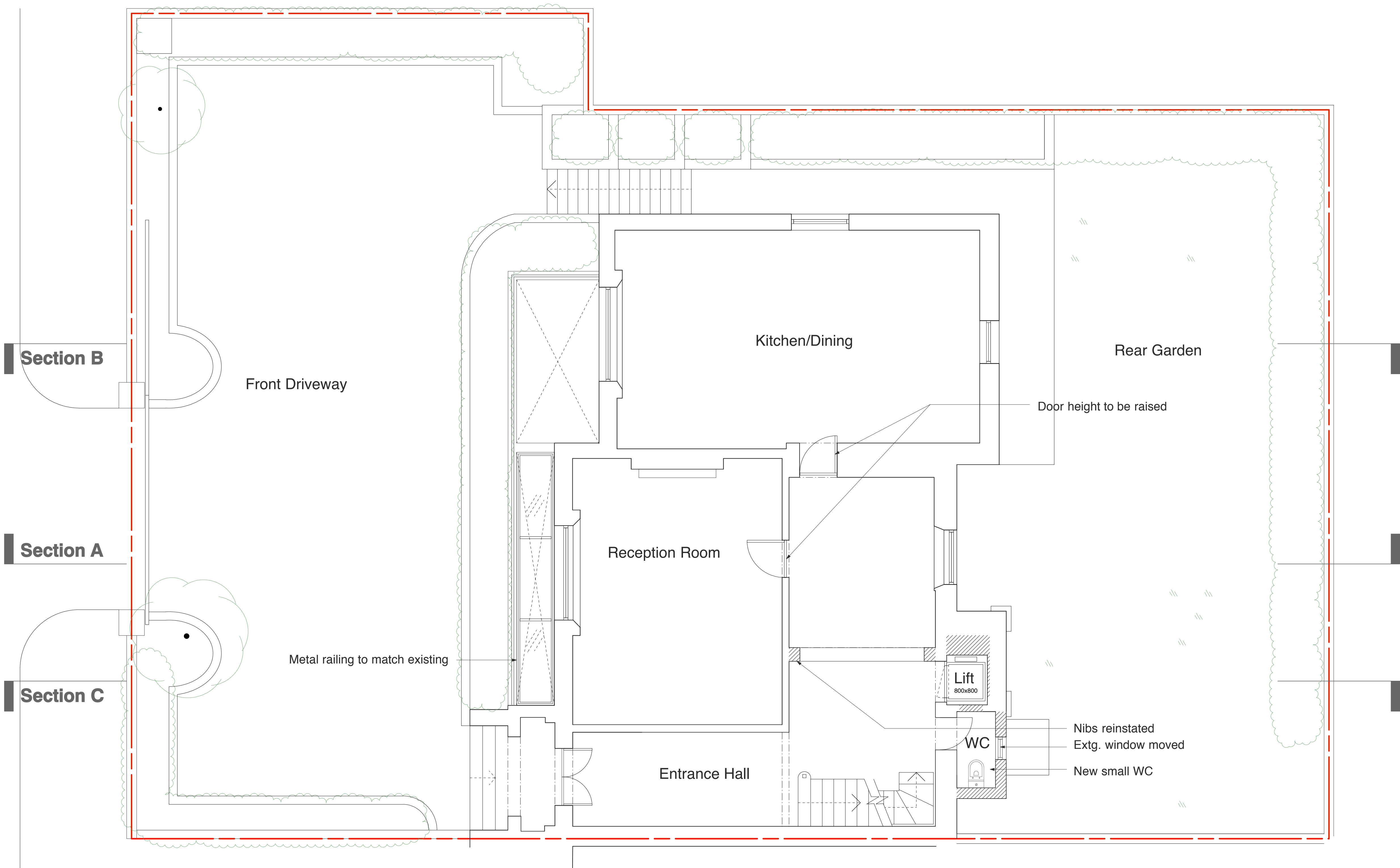
Lower Ground Floor

Section B

Section A

Section C





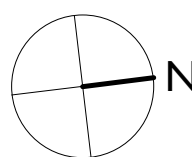
#### General Notes

All dimensions to be verified on site  
To be read in conjunction with all relevant documents  
In the event of discrepancy notify the Architect immediately  
This document is copyright of Hugh Cullum Architects Ltd

Issue	Status	F	Feasibility	D	Design
SK	Information	P	Permissions	S	Scheme
P	Permissions	T	Tender	E	Existing Condition
C	Construction				

#### DRAWING KEY

- Existing
- Proposed
- Demolished



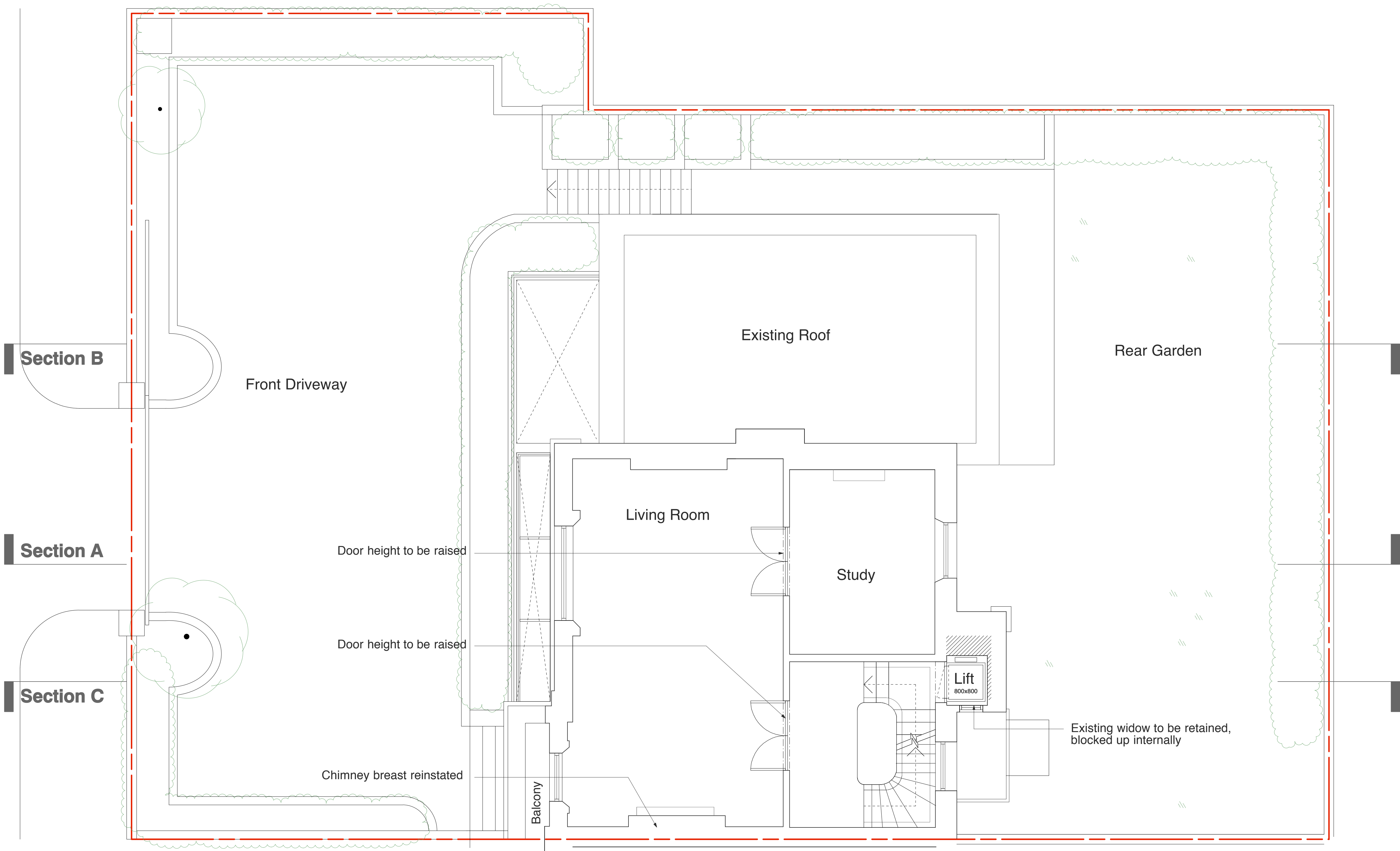
(\_) Issued for Planning (12.12.11/YH)  
Revision: Information (date/drawn by)

# Ground Floor

**HUGH CULLUM**  
ARCHITECTS LTD  
Bloomsbury Design  
61b Judd Street  
London WC1H 9QT  
t 020 7383 7647  
f 020 7387 7645  
mail@hughcullum.com

13 Prince Albert Road  
Planning: Proposals  
Ground Floor Plan  
1:50@A1 November 2011  
PA013-P503(\_)





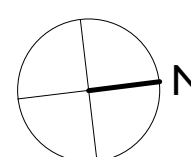
General Notes

All dimensions to be verified on site  
To be read in conjunction with all relevant documents  
In the event of discrepancy notify the Architect immediately  
This document is copyright of Hugh Cullum Architects Ltd

Issue	Status	F	D
SK	Information	Feasibility	Design
P	Permissions	Scheme	Tender
C	Construction	Existing Condition	

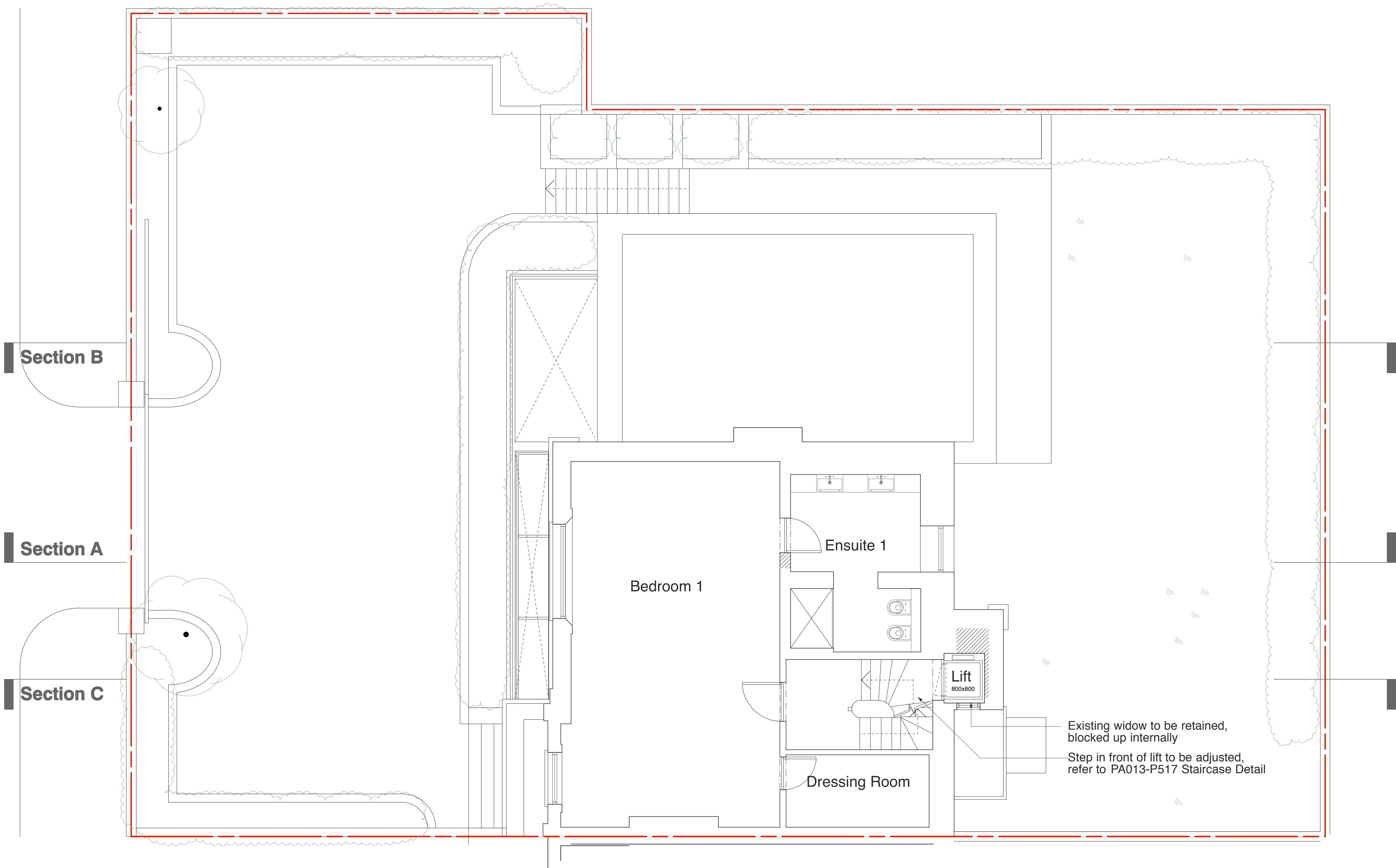
DRAWING KEY

- Existing
- Proposed
- Demolished



(\_) Issued for Planning (12.12.11/YH)  
Revision: Information (date/drawn by)

First Floor



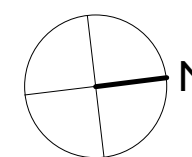
General Notes

All dimensions to be verified on site  
To be read in conjunction with all relevant documents  
In the event of discrepancy notify the Architect immediately  
This document is copyright of Hugh Cullum Architects Ltd

Issue	Status	F	Feasibility	D	Design
SK	Information	P	Permissions	S	Scheme
P	Permissions	S	Scheme	T	Tender
C	Construction	E	Existing Condition		

DRAWING KEY

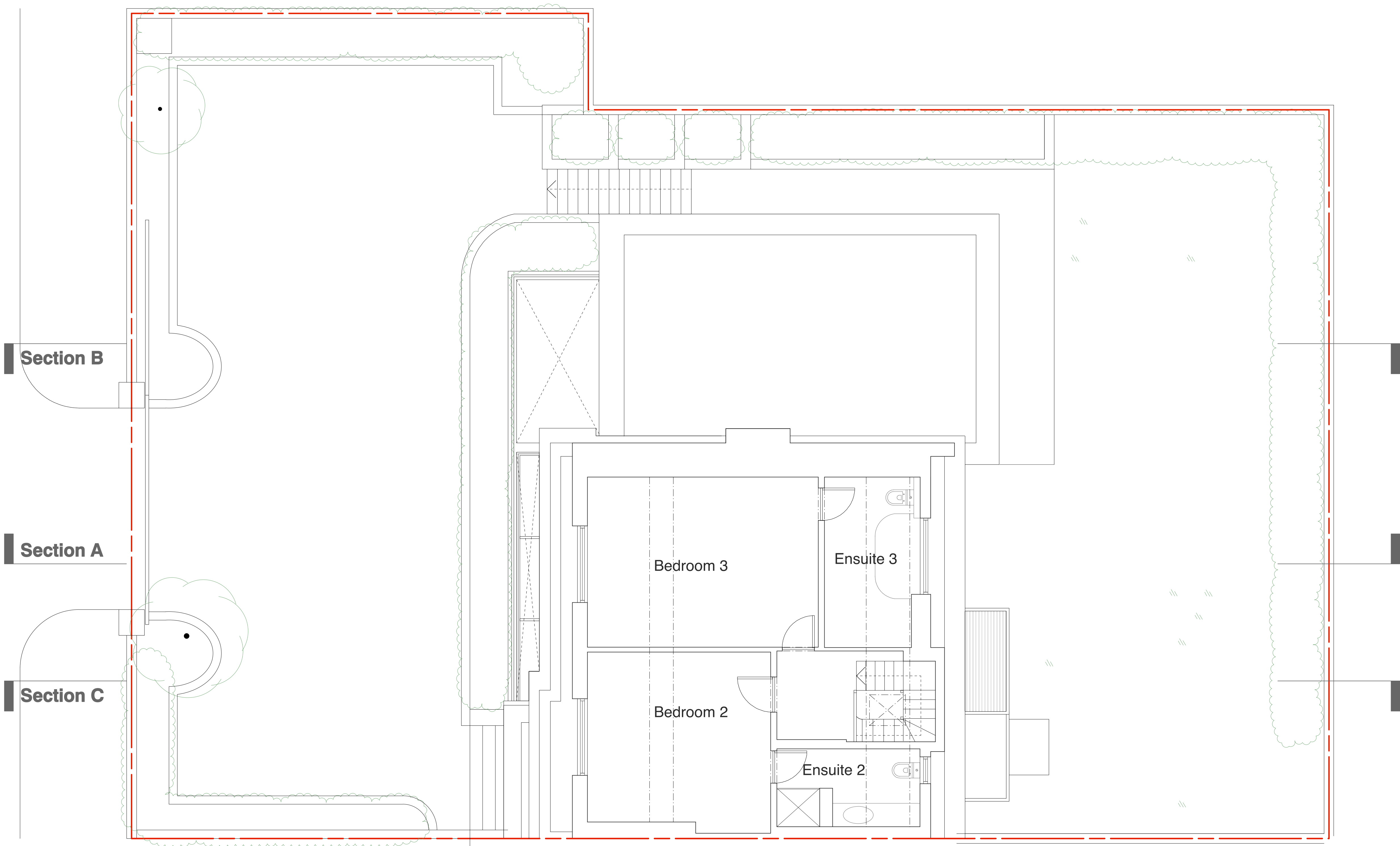
- Existing
- Proposed
- Demolished



(\_) Issued for Planning (12.12.11/YH)  
Revision: Information (date/drawn by)

500 1000 2500 5000mm

Second Floor



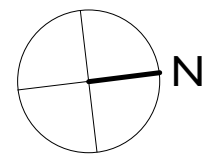
General Notes

All dimensions to be verified on site  
To be read in conjunction with all relevant documents  
In the event of discrepancy notify the Architect immediately  
This document is copyright of Hugh Cullum Architects Ltd

Issue Status  
SK Information F Feasibility D Design  
P Permissions S Scheme T Tender  
C Construction E Existing Condition

DRAWING KEY

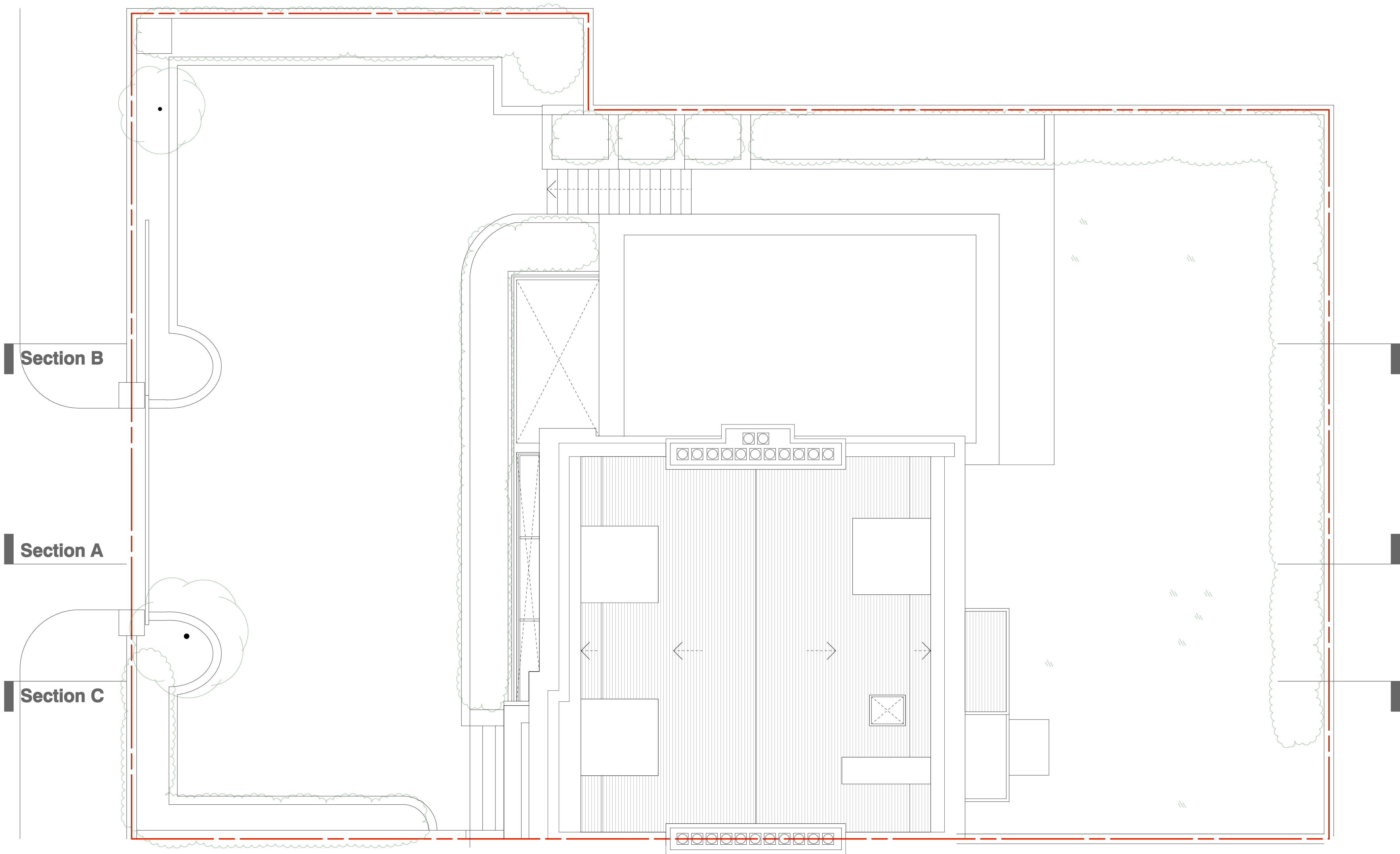
- Existing  
Proposed  
Demolished



500 1000 2500 5000mm

(\_) Issued for Planning (12.12.11/YH)  
Revision: Information (date/drawn by)

Third Floor



**General Notes**

All dimensions to be verified on site  
To be read in conjunction with all relevant documents  
In the event of discrepancy notify the Architect immediately  
This document is copyright of Hugh Cullum Architects Ltd

**Issue Status**

SK	Information	F	Feasibility	D	Design
P	Permissions	S	Scheme	T	Tender
C	Construction	E	Existing Condition		

**DRAWING KEY**

- Existing
- Proposed
- Demolished

**Section A**

**Section B**

**Section C**

**Roof**

(\_) Issued for Planning (12.12.11/YH)  
Revision: Information (date/drawn by)

**HUGH CULLUM ARCHITECTS LTD**  
Bloomsbury Design  
61b Judd Street  
London WC1H 9QT  
t 020 7383 7647  
f 020 7387 7645  
mail@hughcullum.com

**13 Prince Albert Road**  
Planning: Proposals  
Roof Plan  
1:50@A1 November 2011  
PA013-P507(\_)