



NO. 13 PRINCE ALBERT ROAD

NO. 12 PRINCE ALBERT ROAD
SHOWN INDICATIVE, NOT PART OF
THIS APPLICATION

General Notes

All dimensions to be verified on site
To be read in conjunction with all relevant documents
In the event of discrepancy notify the Architect immediately
This document is copyright of Hugh Cullum Architects Ltd

Issue Status

SK	Information	F	Feasibility	D	Design
P	Permissions	S	Scheme	T	Tender
C	Construction	E	Existing Condition		

DRAWING KEY

- | | |
|--|------------|
| | Existing |
| | Proposed |
| | Demolished |

(_): Issued for Planning (12.12.11/YH)

Revision: Information (date/drawn by)

5000mm
2500
1000
500

HUGH CULLUM
ARCHITECTS LTD
Bloomsbury Design
61b Judd Street
London WC1H 9QT
t 020 7383 7647
f 020 7387 7645
mail@hughcullum.com

13 Prince Albert Road
Planning: Existing conditions
Front Elevation
1:50@A1 November 2011
PA013-P408(_)



NO. 12 PRINCE ALBERT ROAD
SHOWN INDICATIVE, NOT PART OF
THIS APPLICATION

NO. 13 PRINCE ALBERT ROAD

General Notes

All dimensions to be verified on site
To be read in conjunction with all relevant documents
In the event of discrepancy notify the Architect immediately
This document is copyright of Hugh Cullum Architects Ltd

Issue Status

SK	Information	F	Feasibility	D	Design
P	Permissions	S	Scheme	T	Tender
C	Construction	E	Existing Condition		

DRAWING KEY

- Existing
- Proposed
- Demolished

(_): Issued for Planning (12.12.11/YH)

Revision: Information (date/drawn by)

5000mm
2500
1000
500

HUGH CULLUM
ARCHITECTS LTD
Bloomsbury Design
61b Judd Street
London WC1H 9QT
t 020 7383 7647
f 020 7387 7645
mail@hughcullum.com

13 Prince Albert Road
Planning: Existing conditions
Rear Elevation
1:50@A1 November 2011
PA013-P409(_)

General Notes

All dimensions to be verified on site
To be read in conjunction with all relevant documents
In the event of discrepancy notify the Architect immediately
This document is copyright of Hugh Cullum Architects Ltd

Issue Status

SK	Information	F	Feasibility	D	Design
P	Permissions	S	Scheme	T	Tender
C	Construction	E	Existing Condition		

DRAWING KEY

- Existing
- Proposed
- Demolished



(_): Issued for Planning (12.12.11/YH)

Revision: Information (date/drawn by)

500 1000 2500 5000mm

HUGH CULLUM
ARCHITECTS LTD
Bloomsbury Design
61b Judd Street
London WC1H 9QT
t 020 7383 7647
f 020 7387 7645
mail@hughcullum.com

13 Prince Albert Road
Planning: Existing conditions
Side Elevation
1:50@A1 November 2011
PA013-P410(_)

General Notes

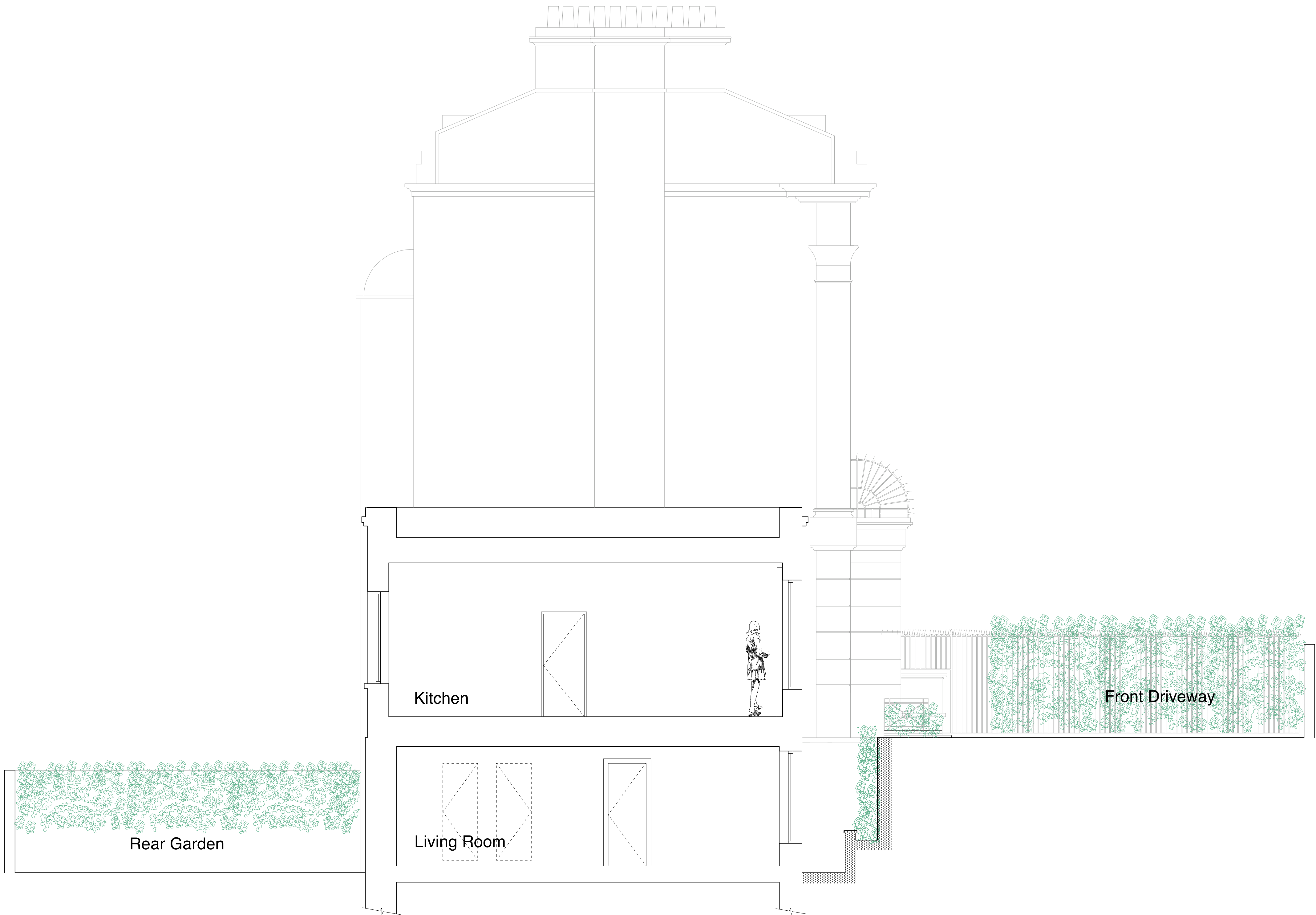
All dimensions to be verified on site
To be read in conjunction with all relevant documents
In the event of discrepancy notify the Architect immediately
This document is copyright of Hugh Cullum Architects Ltd

Issue Status

SK	Information	F	Feasibility	D	Design
P	Permissions	S	Scheme	T	Tender
C	Construction	E	Existing Condition		

DRAWING KEY

- Existing
- Proposed
- Demolished



(-): Issued for Planning (12.12.11/YH)
Revision: Information (date/drawn by)

HUGH CULLUM
ARCHITECTS LTD
Bloomsbury Design
61b Judd Street
London WC1H 9QT
t 020 7383 7647
f 020 7387 7645
mail@hughcullum.com

13 Prince Albert Road
Planning: Existing conditions
Section
1:50@A1 November 2011
PA013-P411(-)