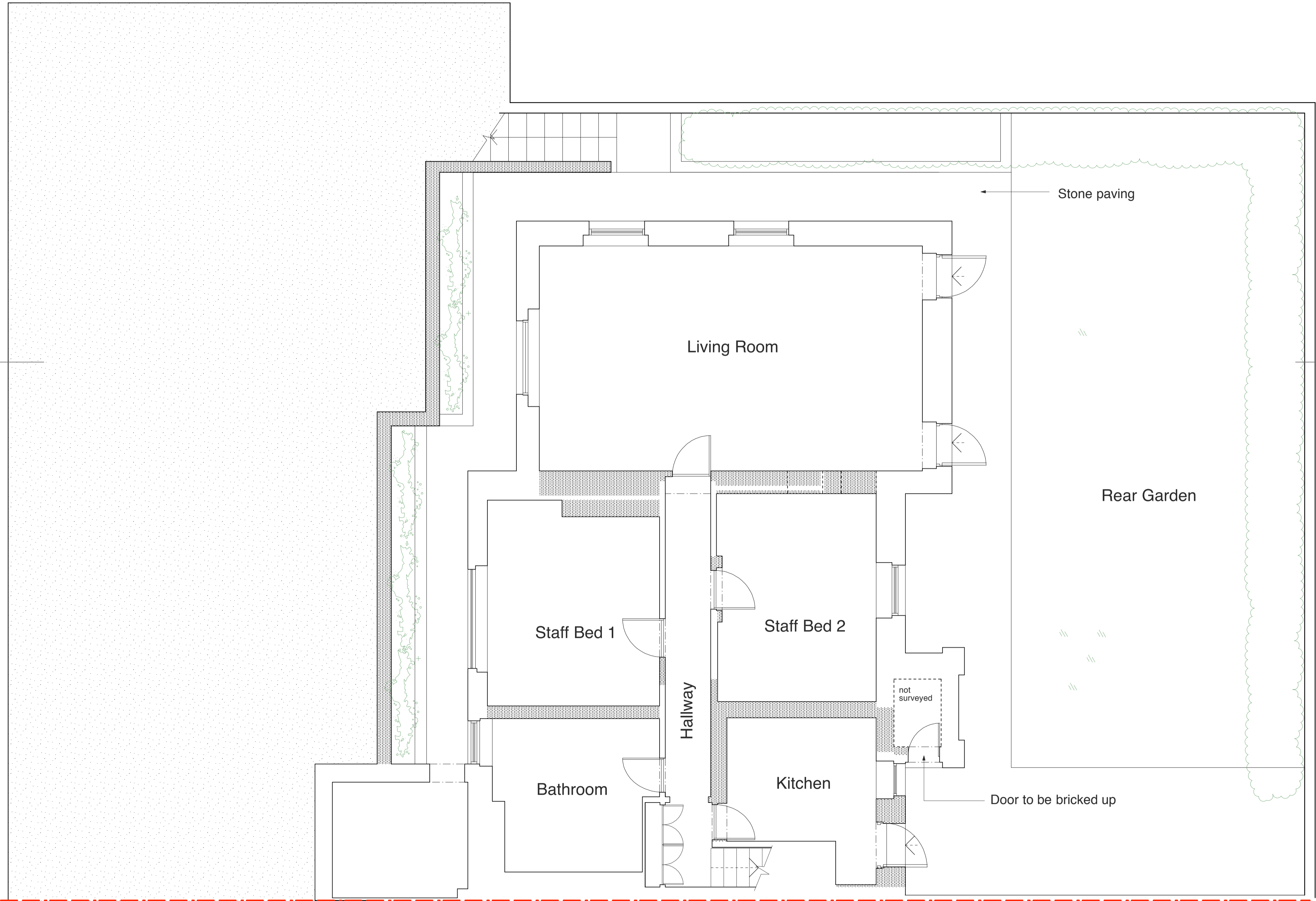


Section



General Notes

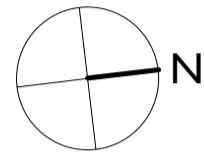
All dimensions to be verified on site
To be read in conjunction with all relevant documents
In the event of discrepancy notify the Architect immediately
This document is copyright of Hugh Cullum Architects Ltd

Issue Status

SK	Information	F	Feasibility	D	Design
P	Permissions	S	Scheme	T	Tender
C	Construction	E	Existing Condition		

DRAWING KEY

- Existing
- Proposed
- Demolished



(_): Issued for Planning (12.12.11/YH)
Revision: Information (date/drawn by)

General Notes

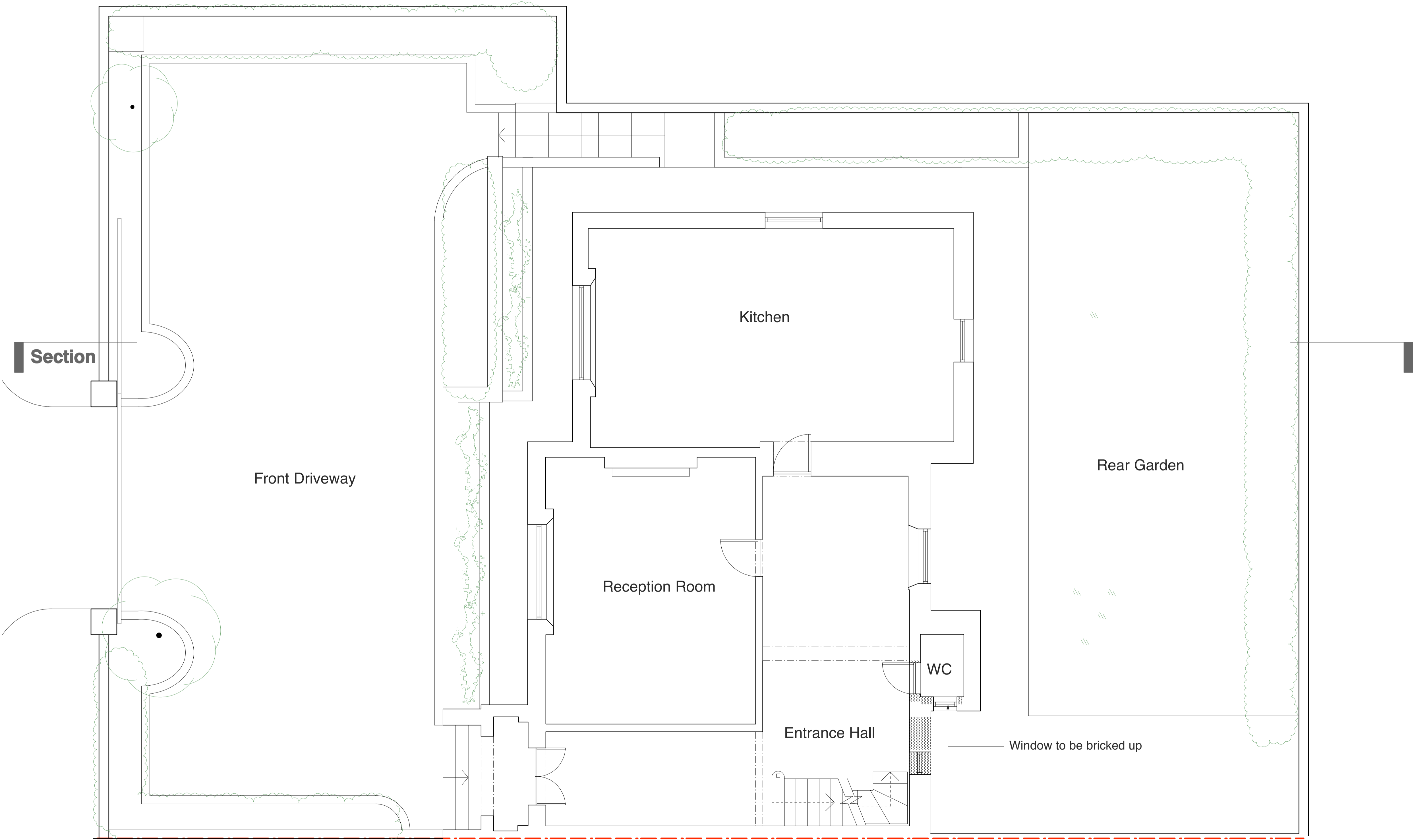
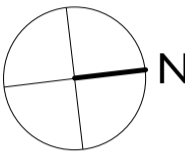
All dimensions to be verified on site
To be read in conjunction with all relevant documents
In the event of discrepancy notify the Architect immediately
This document is copyright of Hugh Cullum Architects Ltd

Issue Status

SK	Information	F	Feasibility	D	Design
P	Permissions	S	Scheme	T	Tender
C	Construction	E	Existing Condition		

DRAWING KEY

- Existing
- Proposed
- Demolished



(_): Issued for Planning (12.12.11/YH)
Revision: Information (date/drawn by)

5000mm
2500
1000
500

General Notes

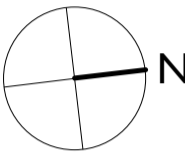
All dimensions to be verified on site
To be read in conjunction with all relevant documents
In the event of discrepancy notify the Architect immediately
This document is copyright of Hugh Cullum Architects Ltd

Issue Status

SK	Information	F	Feasibility	D	Design
P	Permissions	S	Scheme	T	Tender
C	Construction	E	Existing Condition		

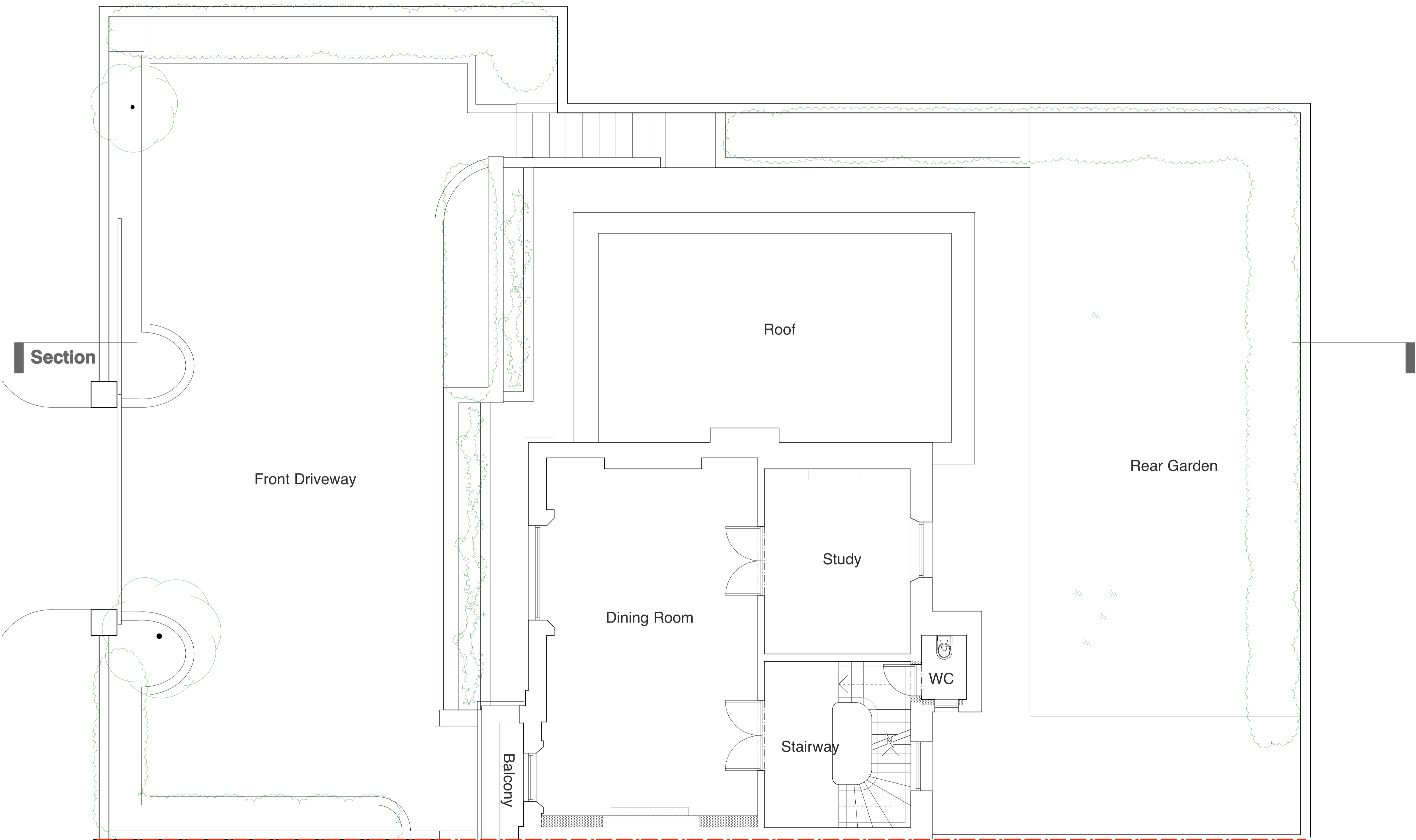
DRAWING KEY

- Existing
- Proposed
- Demolished



5000mm
2500
1000
500

(_): Issued for Planning (12.12.11/YH)
Revision: Information (date/drawn by)



General Notes

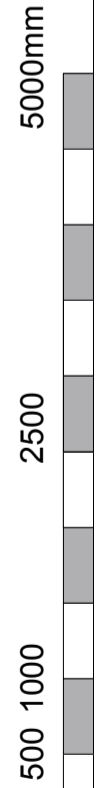
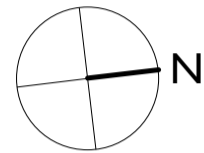
All dimensions to be verified on site
To be read in conjunction with all relevant documents
In the event of discrepancy notify the Architect immediately
This document is copyright of Hugh Cullum Architects Ltd

Issue Status

SK	Information	F	Feasibility	D	Design
P	Permissions	S	Scheme	T	Tender
C	Construction	E	Existing Condition		

DRAWING KEY

- Existing
- Proposed
- Demolished



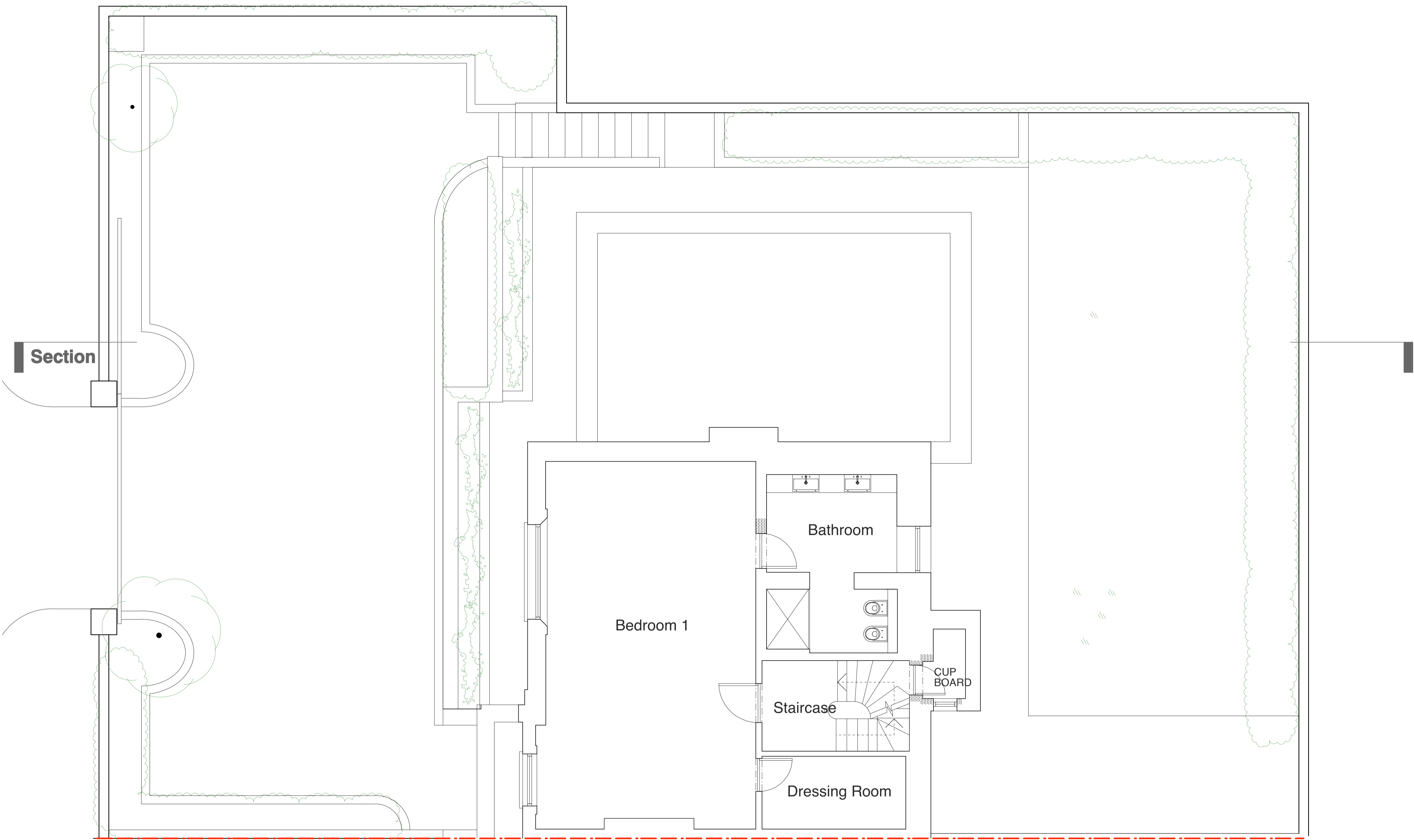
(_): Issued for Planning (12.12.11/YH)
Revision: Information (date/drawn by)

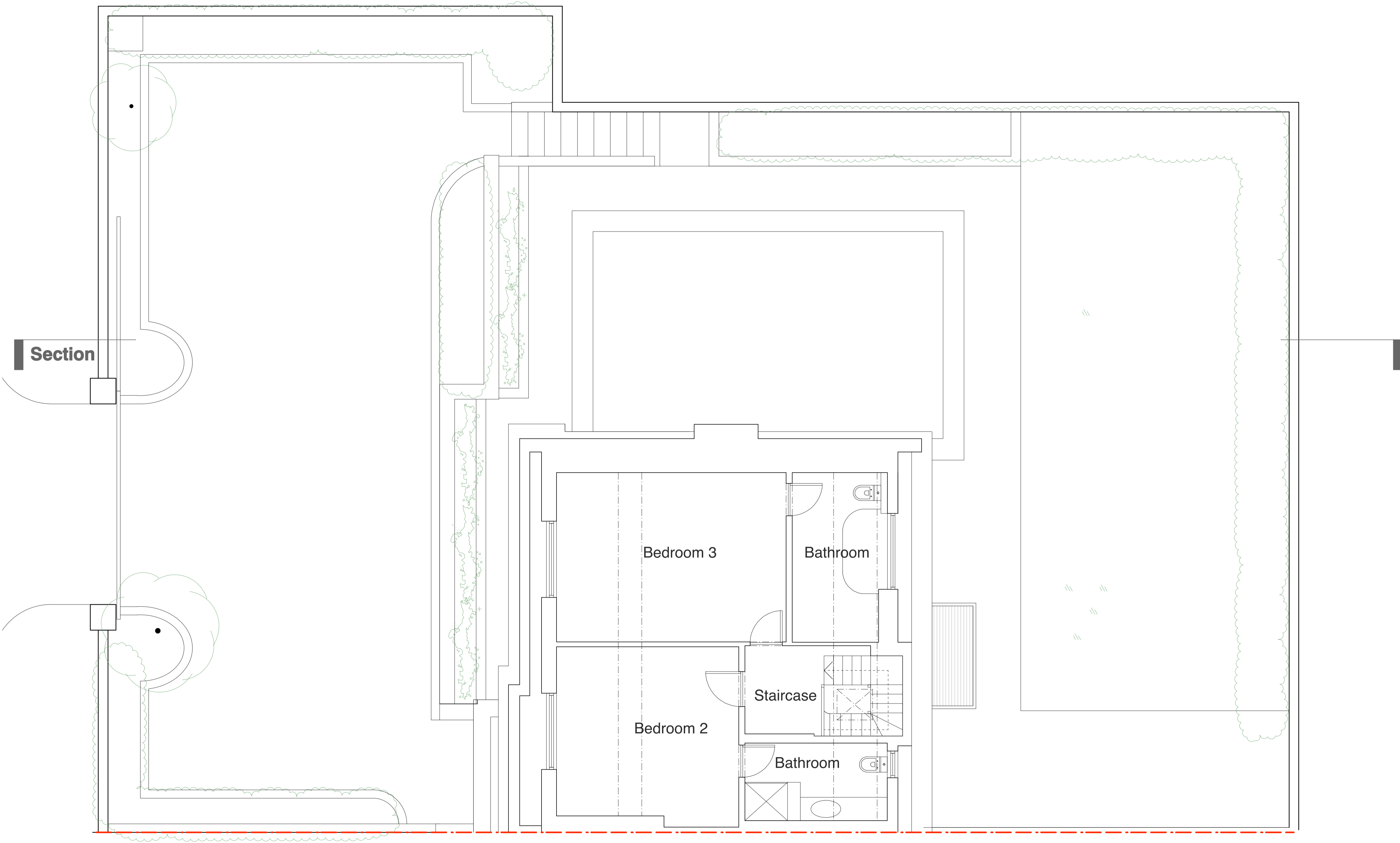
HUGH CULLUM
ARCHITECTS LTD
Bloomsbury Design
61b Judd Street
London WC1H 9QT
t 020 7383 7647
f 020 7387 7645
mail@hughcullum.com

13 Prince Albert Road

Planning: Existing conditions
Second Floor Plan
1:50@A1 November 2011

PA013-P405(_)





General Notes

All dimensions to be verified on site
To be read in conjunction with all relevant documents
In the event of discrepancy notify the Architect immediately
This document is copyright of Hugh Cullum Architects Ltd

Issue Status
SK Information F Feasibility D Design
P Permissions S Scheme T Tender
C Construction E Existing Condition

DRAWING KEY

Existing

Proposed

Demolished

N

5000mm

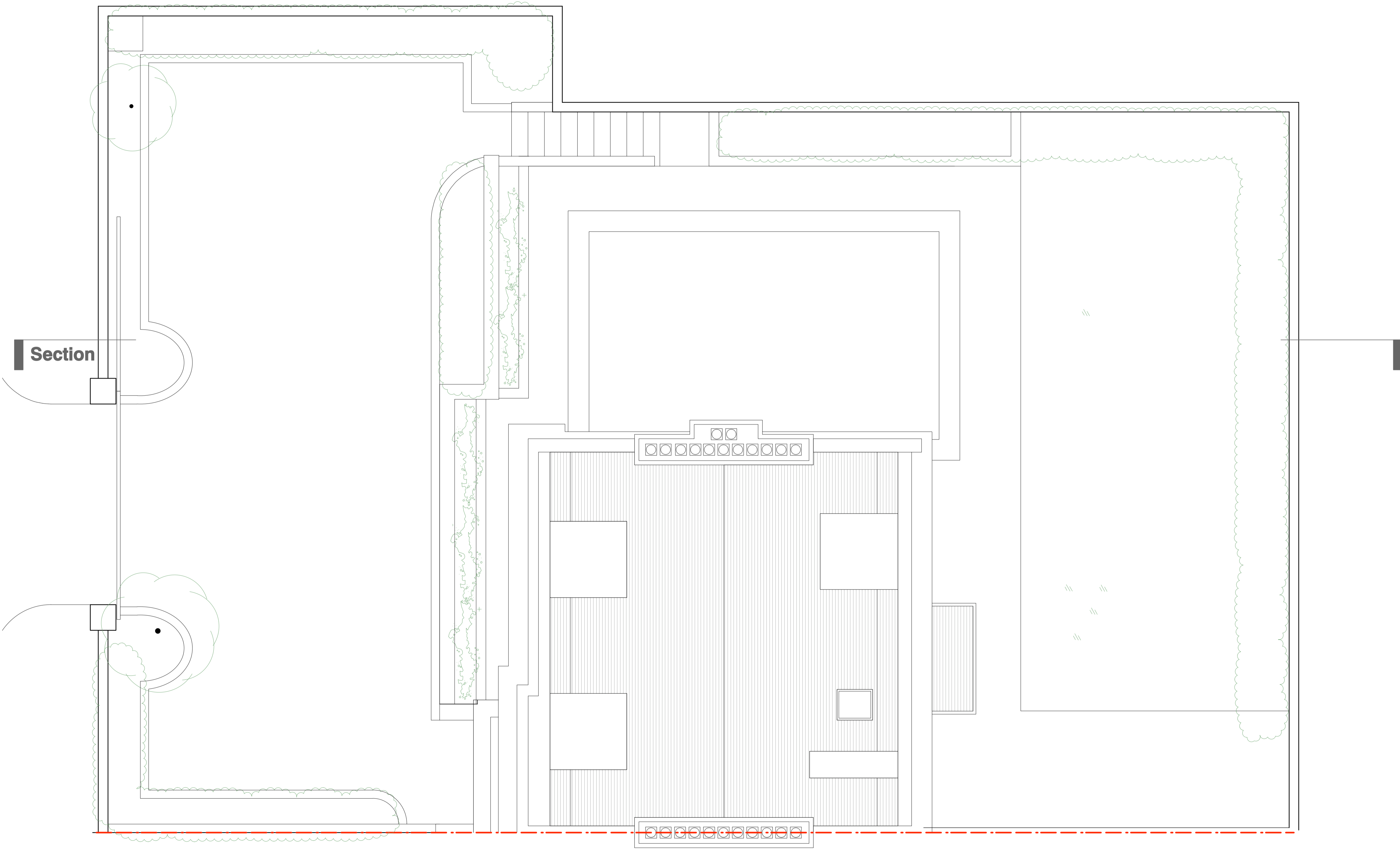
2500

1000

500

(_) : Issued for Planning (12.12.11/YH)

Revision: Information (date/drawn by)



General Notes

All dimensions to be verified on site
To be read in conjunction with all relevant documents
In the event of discrepancy notify the Architect immediately
This document is copyright of Hugh Cullum Architects Ltd

Issue Status

SK	Information	F	Feasibility	D	Design
P	Permissions	S	Scheme	T	Tender
C	Construction	E	Existing Condition		

DRAWING KEY

- Existing
- Proposed
- Demolished

N

5000mm
2500
1000
500

(_: Issued for Planning (12.12.11/YH)
Revision: Information (date/drawn by)