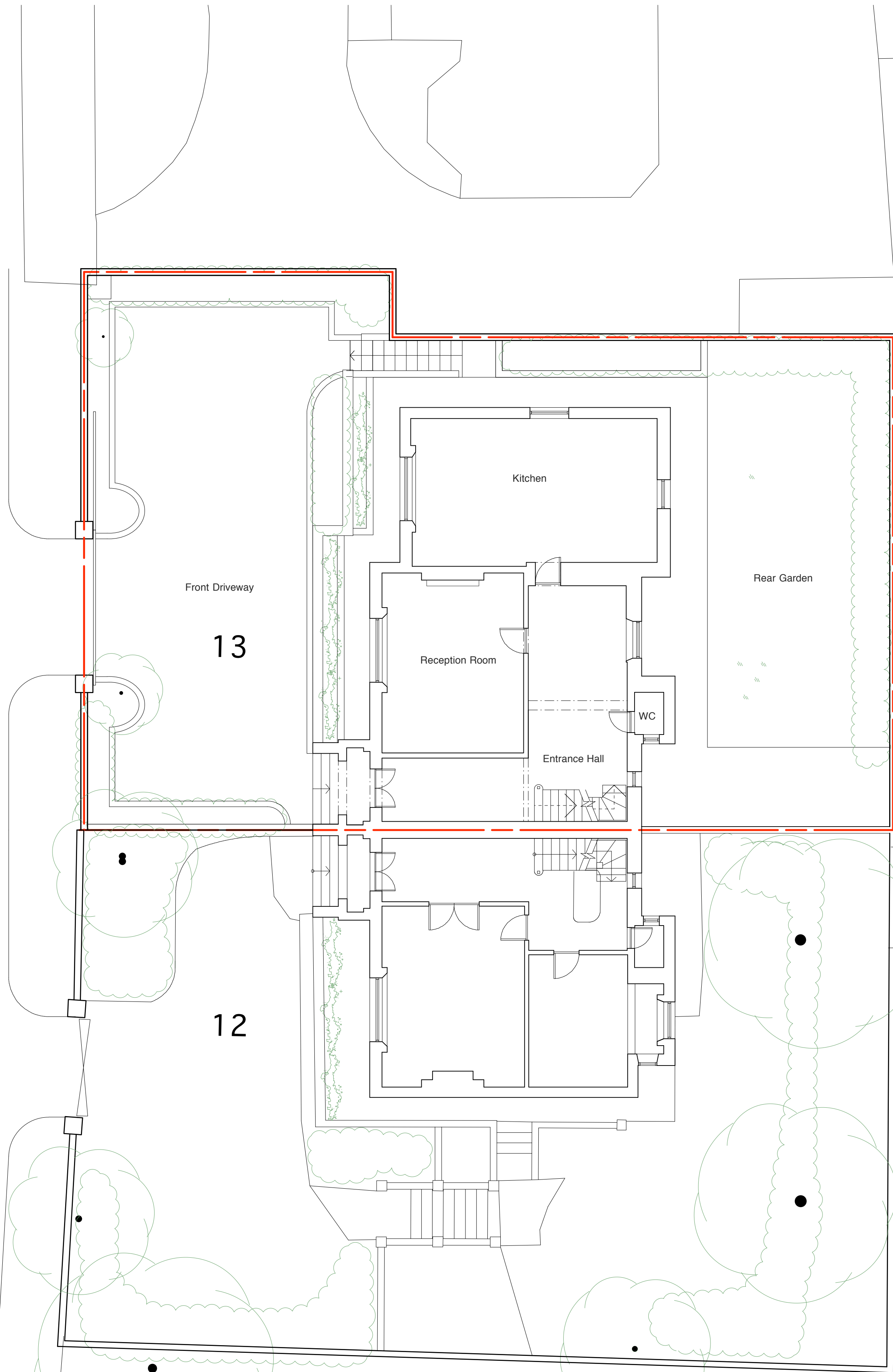


Prince Albert Road

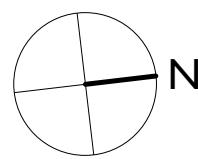


General Notes

All dimensions to be verified on site  
To be read in conjunction with all relevant documents  
In the event of discrepancy notify the Architect immediately  
This document is copyright of Hugh Cullum Architects Ltd

Issue Status

SK	Information	F	Feasibility	D	Design
P	Permissions	S	Scheme	T	Tender
C	Construction	E	Existing Condition		



(\_): Issued for Planning (12.12.11/YH)

Revision: Information (date/drawn by)

**HUGH CULLUM**  
ARCHITECTS LTD  
Bloomsbury Design  
61b Judd Street  
London WC1H 9QT  
t 020 7383 7647  
f 020 7387 7645  
mail@hughcullum.com

**13 Prince Albert Road**  
Planning: Existing conditions  
Site Plan  
1:100@A1 November 2011

**PA013-P401(\_)**

