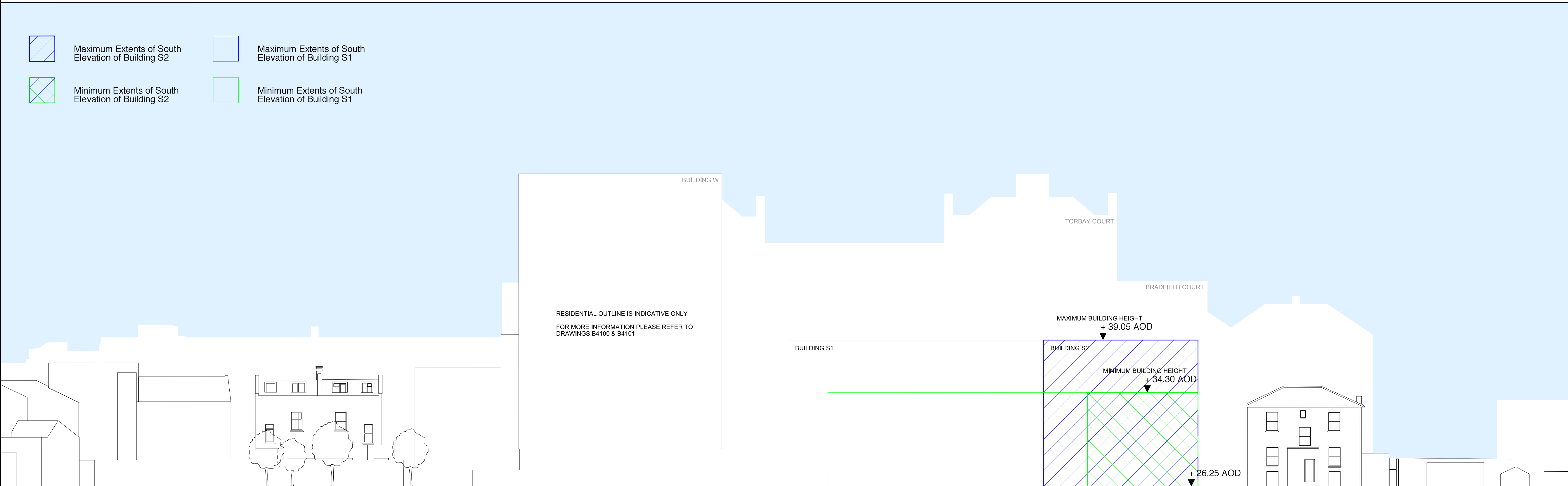


01 NORTH ELEVATION



02 SOUTH ELEVATION

NOTES -

Siting of building S2 is indicative only. For information relating to extents of deviation and for further information relating to maximum and minimum extents please refer to drawing 4401.

For information relating to boundary enclosure please refer to drawing 4404

-	12/12/11	FIRST ISSUE
REV	DATE	
NOTE		
1. Do not scale from this drawing, other than for Planning purposes. 2. All dimensions to be checked on site by the contractor and such dimensions to be his responsibility. 3. Report all drawing errors, omissions and discrepancies to the architect. 4. This document may be issued in an uncontrolled CAD format to enable others to use it as background information to make alterations and/or additions. In that instance the file will be accompanied by a PDF version. It is for those making such alterations and additions to ensure that they make use of current background information. AHMM Ltd accepts no liability for any such alterations or additions to the background information or arising out of changes to background information which occur prior to alterations of additions being made.		
LOCATION		
02		
ALLFORD HALL MONAGHAN MORRIS		
ARCHITECTS Ltd 2ND FLOOR, BLOCK C, 5-23 OLD STREET LONDON EC1V 9HL TEL 020 7251 5261 FAX 020 7251 5123 WEB WWW.AHMM.CO.UK		
job title		
HAWLEY WHARF		
drawing title / location		
BUILDING HEIGHTS - ELEVATIONS OUTLINE SCHOOL APPLICATION		
drawn by	checked	scale
MM		1:200@A1; 1:400@A3
project	zone	source
09175	S	-
status	drawing no.	revision
PLANNING	4410	-