



Transient Overshadowing Assessment Western Parameter

Camden Lock Village
Project No: 2801

December 28, 2011



DAYLIGHT+SOLAR DESIGN

gja



DAYLIGHT+SOLAR DESIGN



2801 - Camden Lock Village Transient Overshadowing Assessment - Western Parameter

Sources of information:

- IR76-80_2801

Issue No: IS4-2801

Page No: 2

Date: December 28, 2011

Client	Stanley Sidings Ltd
Architect	AHMM & MAKE
Project Title	Camden Lock Village
Project Number	2801
Report Title	Transient Overshadowing Assessment - Western Parameter
Dated	December 28, 2011

Written by	Alex Buckley
Checked by	SP
Type	Planning

Revisions	Date:	Notes:	Signed:
--	--/--/--	--	--



2801 - Camden Lock Village Transient Overshadowing Assessment - Western Parameter

Transient Overshadowing Assessment - 21st March

Sources of information:

- IR76-80_2801

Issue No:

IS4-2801

Page No:

3

Date:

December 28, 2011

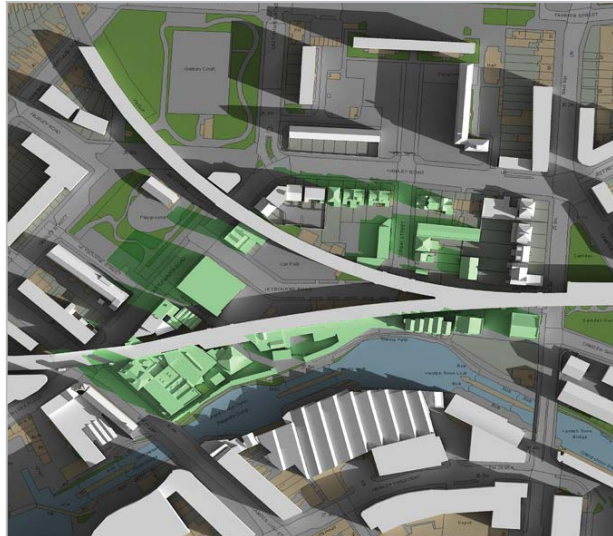


Figure 1: EXISTING - 08:00 GMT

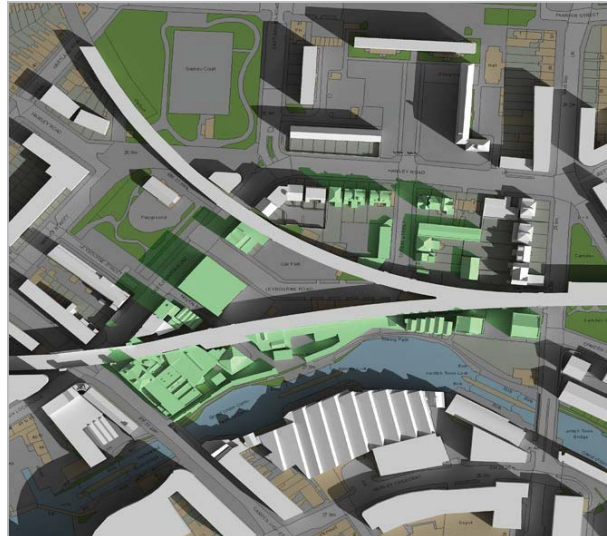


Figure 2: EXISTING - 09:00 GMT

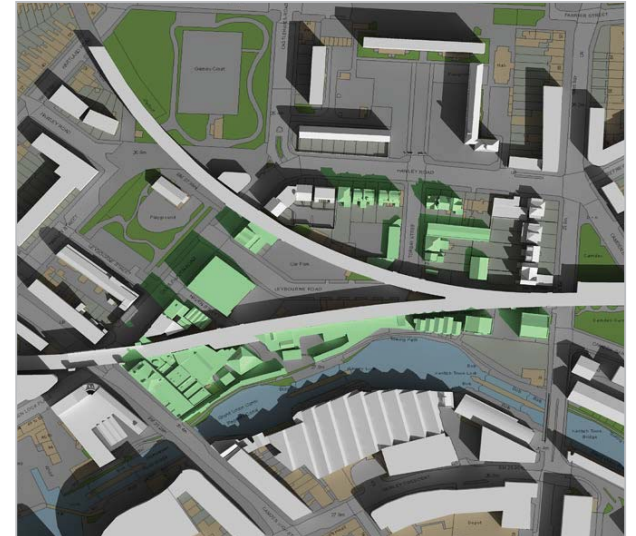


Figure 3: EXISTING - 10:00 GMT

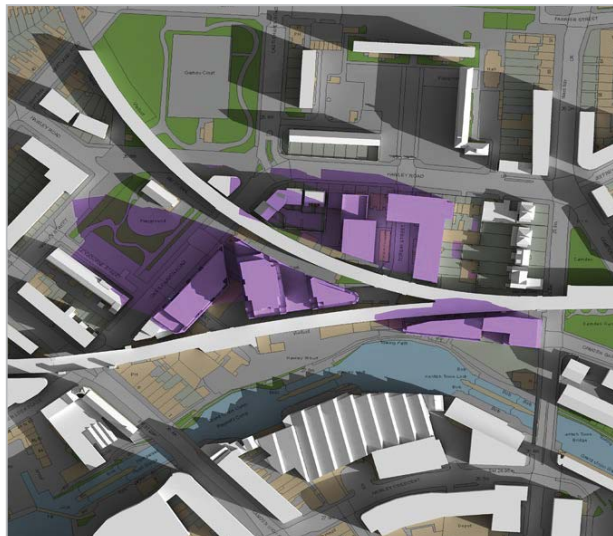


Figure 4: PROPOSED - 08:00 GMT

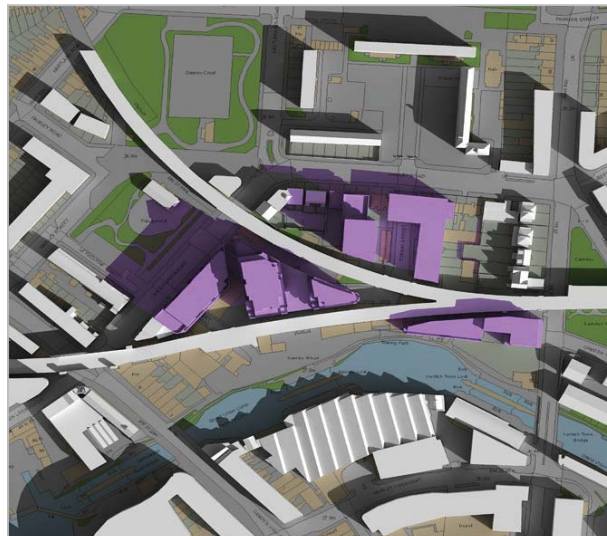


Figure 5: PROPOSED - 09:00 GMT

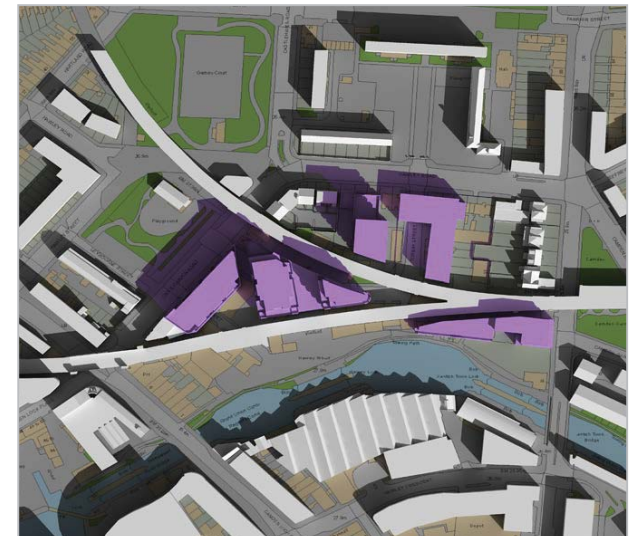


Figure 6: PROPOSED - 10:00 GMT



2801 - Camden Lock Village Transient Overshadowing Assessment - Western Parameter

Transient Overshadowing Assessment - 21st March

Sources of information:

- IR76-80_2801

Issue No:

IS4-2801

Page No:

4

Date:

December 28, 2011



Figure 7: EXISTING - 11:00 GMT

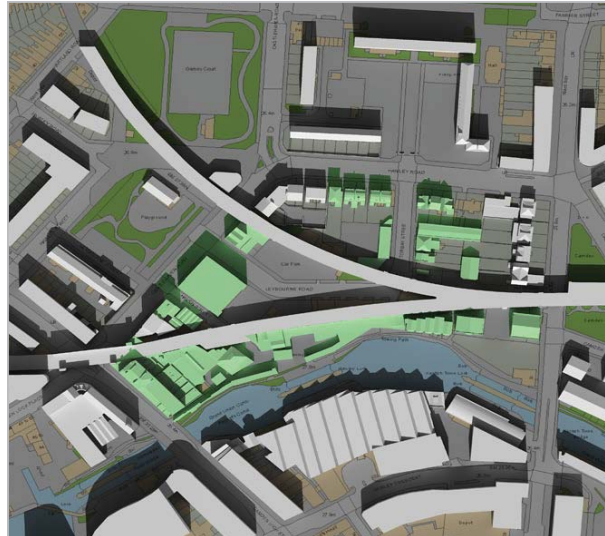


Figure 8: EXISTING - 12:00 GMT



Figure 9: EXISTING - 13:00 GMT

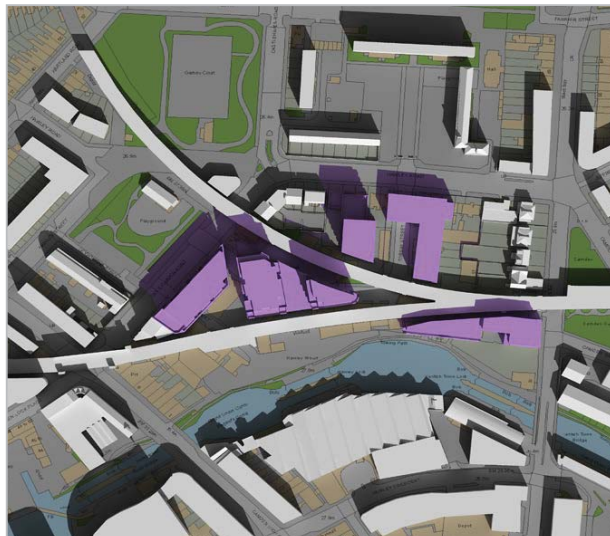


Figure 10: PROPOSED - 11:00 GMT



Figure 11: PROPOSED - 12:00 GMT



Figure 12: PROPOSED - 13:00 GMT



2801 - Camden Lock Village Transient Overshadowing Assessment - Western Parameter

Transient Overshadowing Assessment - 21st March

Sources of information:

- IR76-80_2801

Issue No:

IS4-2801

Page No:

5

Date:

December 28, 2011



Figure 13: EXISTING - 14:00 GMT

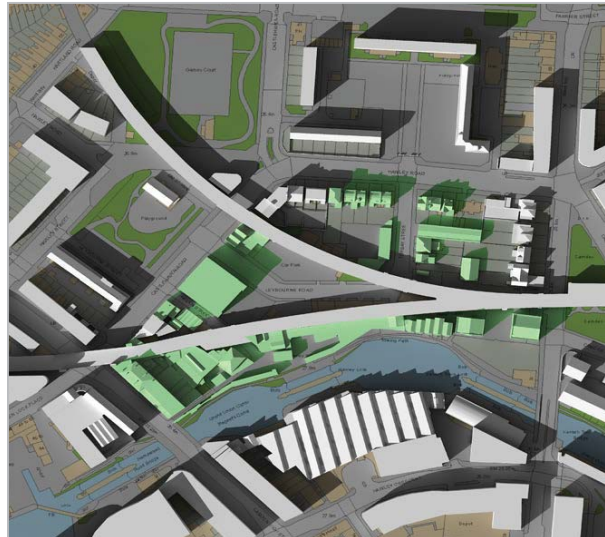


Figure 14: EXISTING - 15:00 GMT

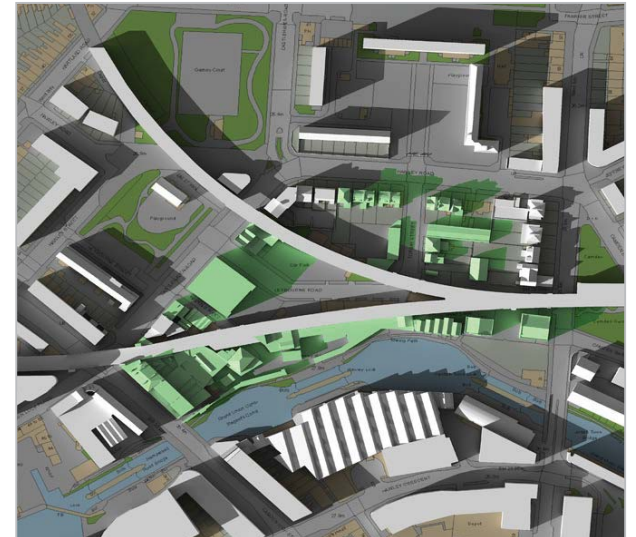


Figure 15: EXISTING - 16:00 GMT

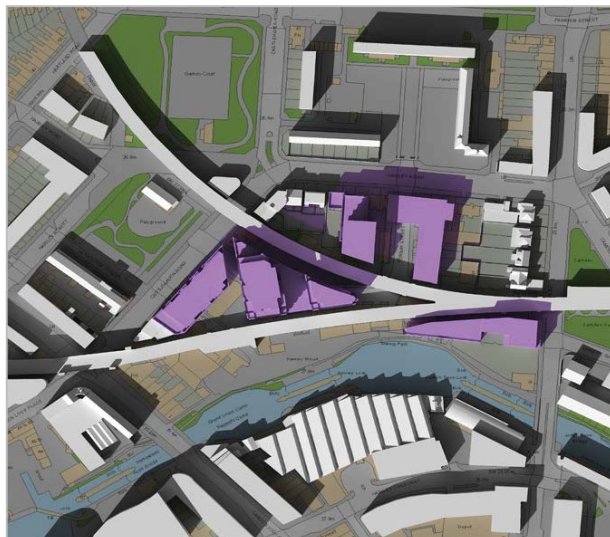


Figure 16: PROPOSED - 14:00 GMT

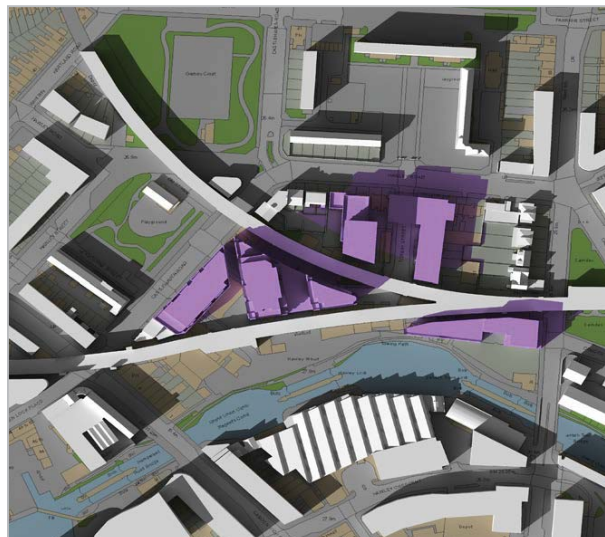


Figure 17: PROPOSED - 15:00 GMT

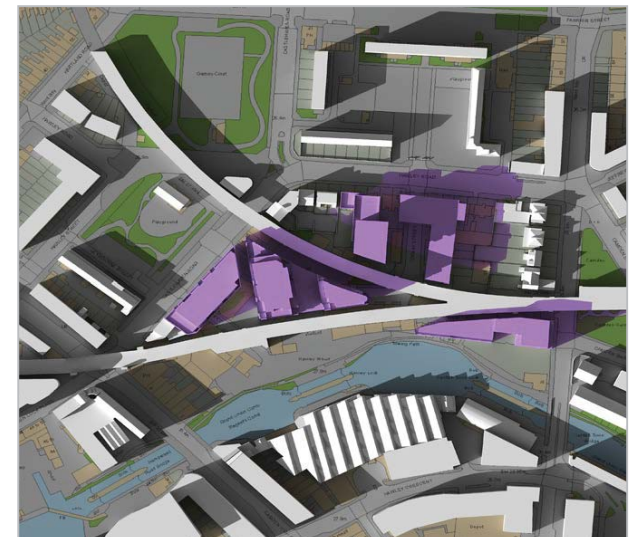


Figure 18: PROPOSED - 16:00 GMT



2801 - Camden Lock Village Transient Overshadowing Assessment - Western Parameter

Transient Overshadowing Assessment - 21st March

Sources of information:

- IR76-80_2801

Issue No:

IS4-2801

Page No:

6

Date:

December 28, 2011

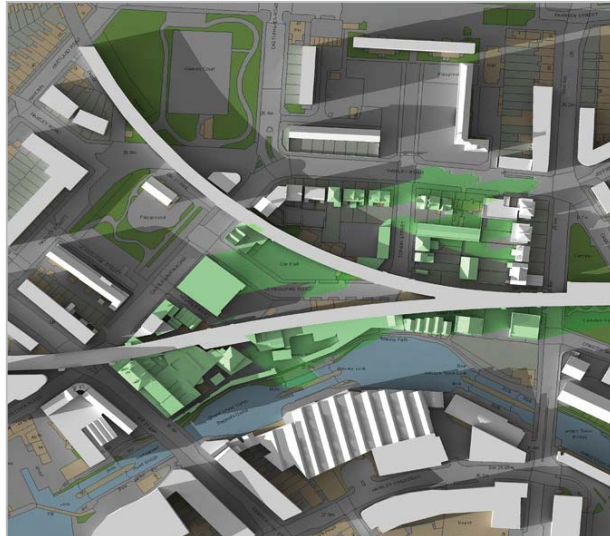


Figure 19: EXISTING - 17:00 GMT



Figure 20: EXISTING - 18:00 GMT

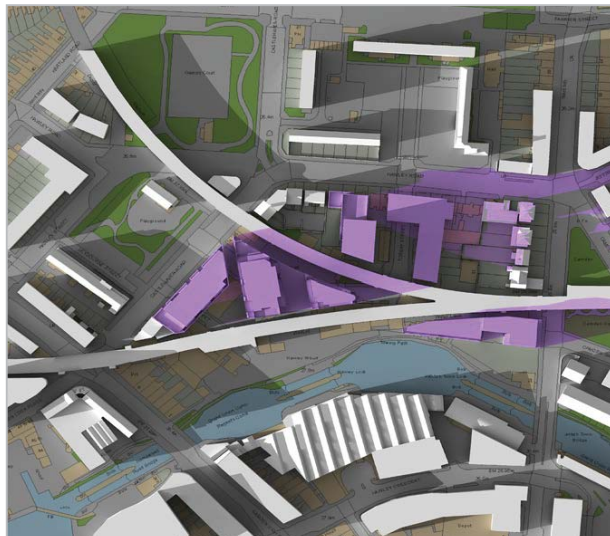


Figure 21: PROPOSED - 17:00 GMT



Figure 22: PROPOSED - 18:00 GMT



2801 - Camden Lock Village Transient Overshadowing Assessment - Western Parameter

Transient Overshadowing Assessment - 21st June

Sources of information:

- IR76-80_2801

Issue No:

IS4-2801

Page No:

7

Date:

December 28, 2011



Figure 23: EXISTING - 09:00 BST



Figure 24: EXISTING - 10:00 BST



Figure 25: EXISTING - 11:00 BST

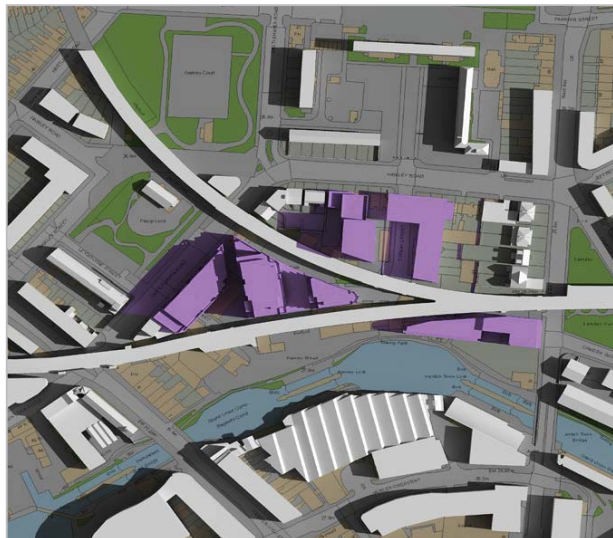


Figure 26: PROPOSED - 09:00 BST

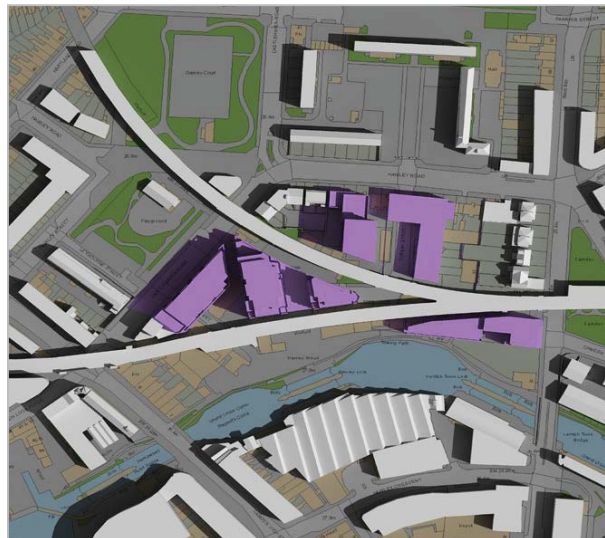


Figure 27: PROPOSED - 10:00 BST

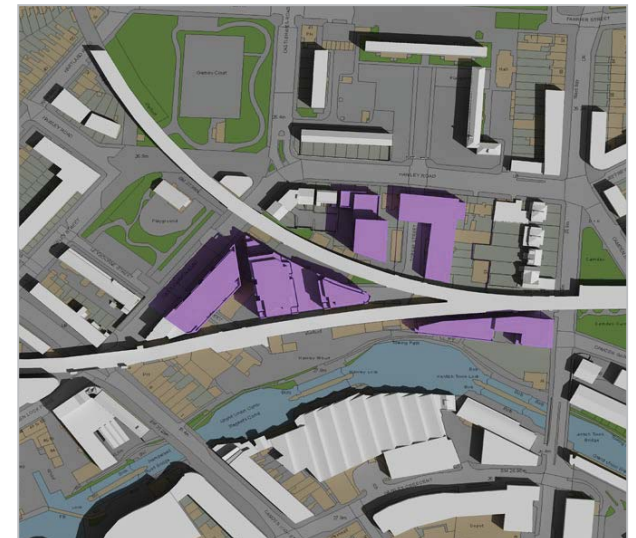


Figure 28: PROPOSED - 11:00 BST



2801 - Camden Lock Village Transient Overshadowing Assessment - Western Parameter

Transient Overshadowing Assessment - 21st June

Sources of information:

- IR76-80_2801

Issue No:

IS4-2801

Page No:

8

Date:

December 28, 2011



Figure 29: EXISTING - 12:00 BST



Figure 30: EXISTING - 13:00 BST



Figure 31: EXISTING - 14:00 BST

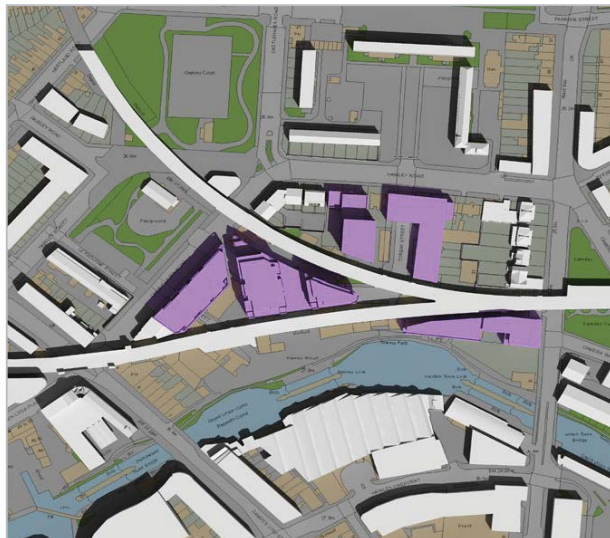


Figure 32: PROPOSED - 12:00 BST



Figure 33: PROPOSED - 13:00 BST



Figure 34: PROPOSED - 14:00 BST



2801 - Camden Lock Village Transient Overshadowing Assessment - Western Parameter

Transient Overshadowing Assessment - 21st June

Sources of information:

- IR76-80_2801

Issue No:

IS4-2801

Page No:

9

Date:

December 28, 2011



Figure 35: EXISTING - 15:00 BST



Figure 36: EXISTING - 16:00 BST

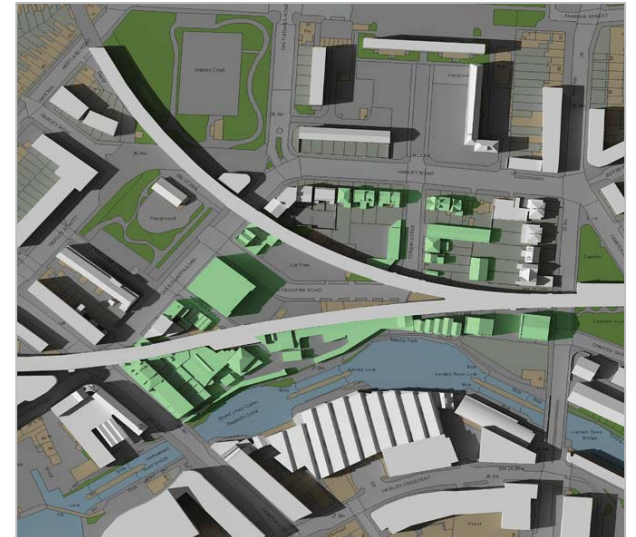


Figure 37: EXISTING - 17:00 BST



Figure 38: PROPOSED - 15:00 BST

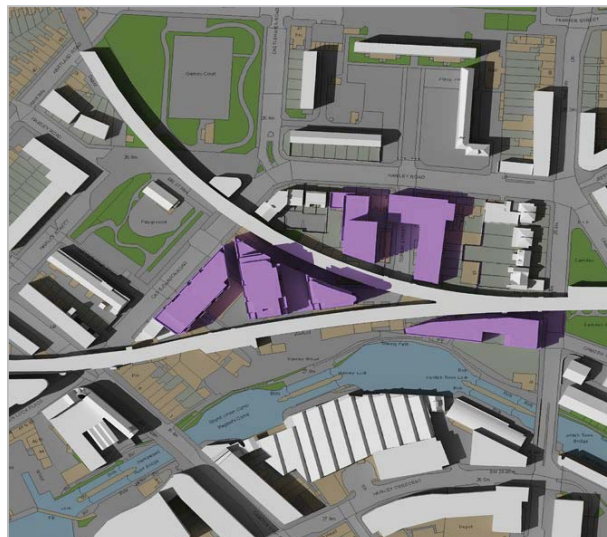


Figure 39: PROPOSED - 16:00 BST

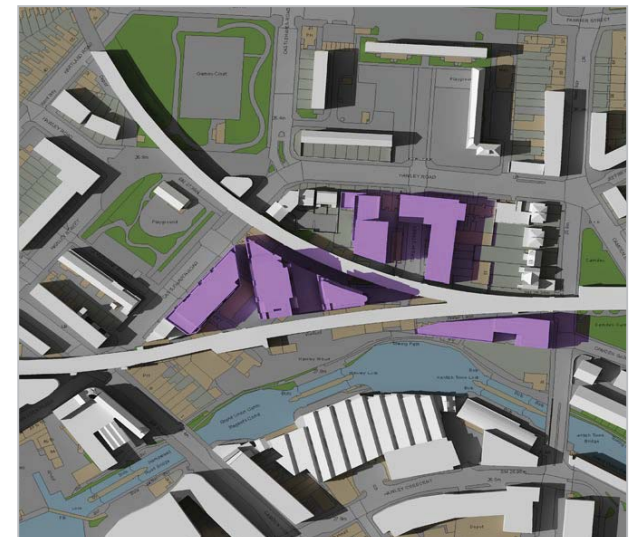


Figure 40: PROPOSED - 17:00 BST



2801 - Camden Lock Village Transient Overshadowing Assessment - Western Parameter

Transient Overshadowing Assessment - 21st June

Sources of information:

- IR76-80_2801

Issue No:

IS4-2801

Page No:

10

Date:

December 28, 2011

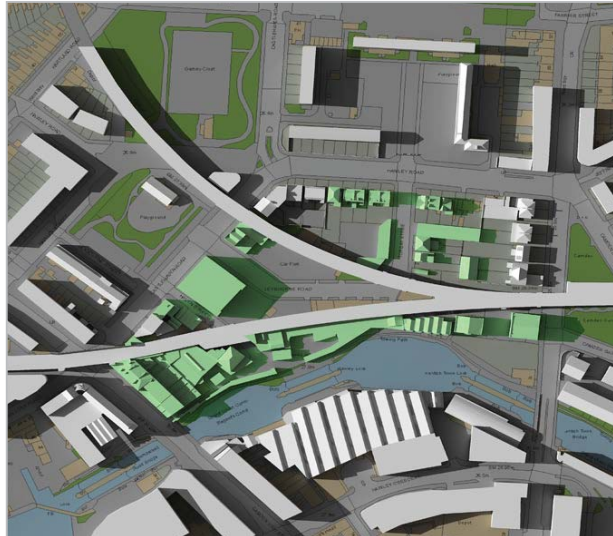


Figure 41: EXISTING - 18:00 BST

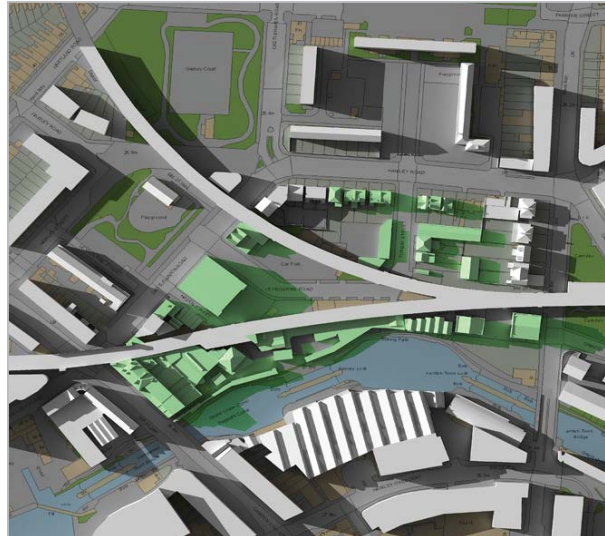


Figure 42: EXISTING - 19:00 BST

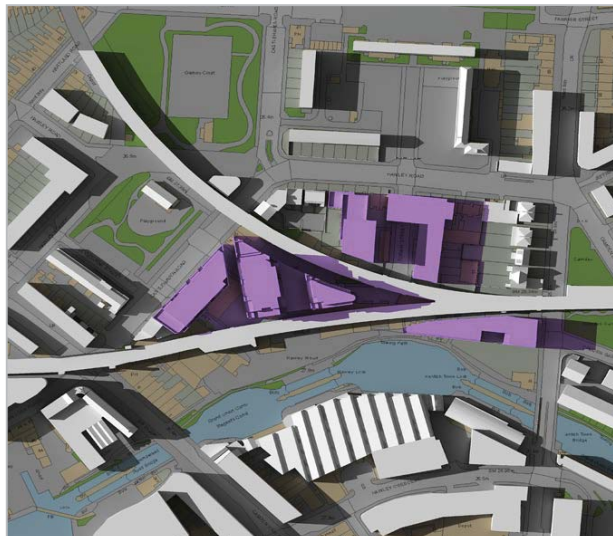


Figure 43: PROPOSED - 18:00 BST

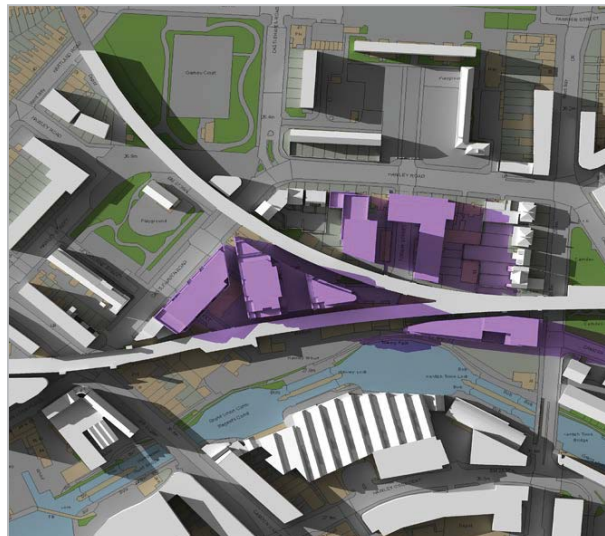


Figure 44: PROPOSED - 19:00 BST



2801 - Camden Lock Village Transient Overshadowing Assessment - Western Parameter

Transient Overshadowing Assessment - 21st December

Sources of information:

- IR76-80_2801

Issue No:

IS4-2801

Page No:

11

Date:

December 28, 2011



Figure 45: EXISTING - 09:00 GMT

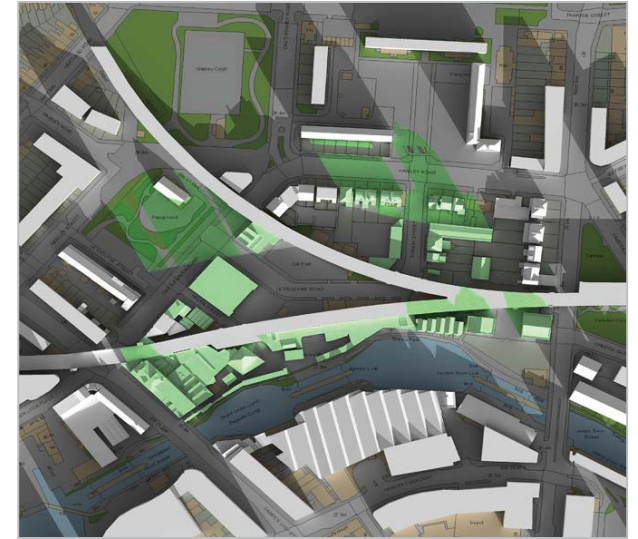


Figure 46: EXISTING - 10:00 GMT

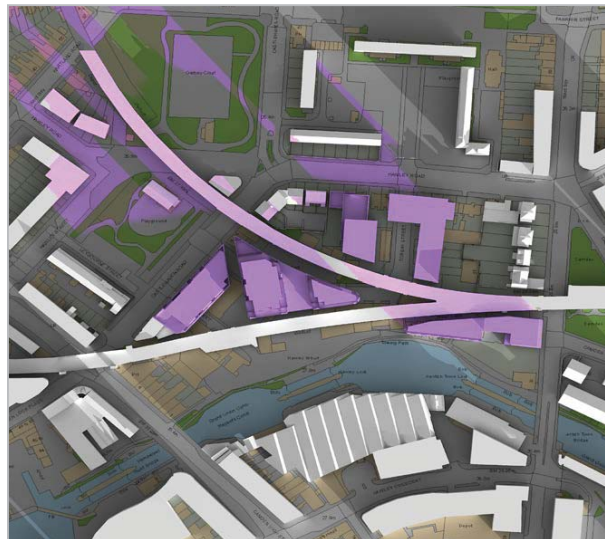


Figure 47: PROPOSED - 09:00 GMT

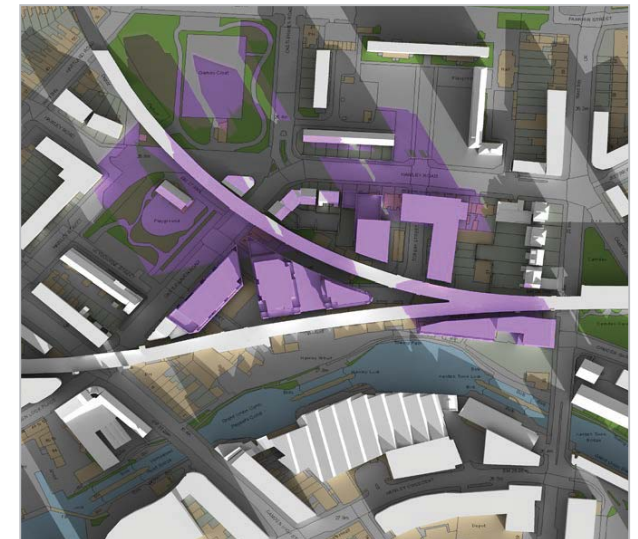


Figure 48: PROPOSED - 10:00 GMT



2801 - Camden Lock Village Transient Overshadowing Assessment - Western Parameter

Transient Overshadowing Assessment - 21st December

Sources of information:

- IR76-80_2801

Issue No:

IS4-2801

Page No:

12

Date:

December 28, 2011

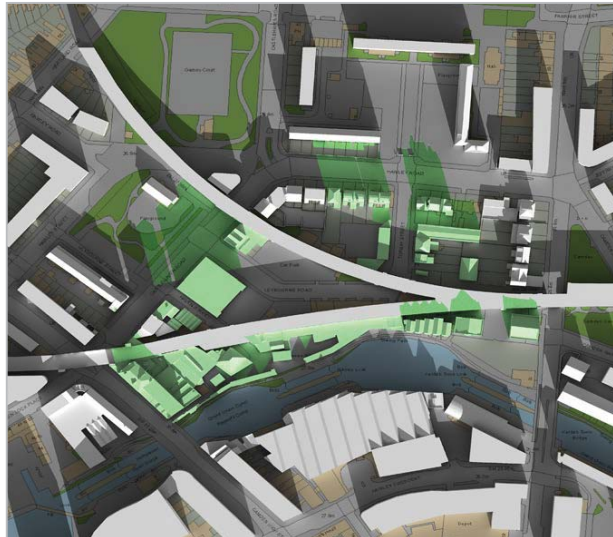


Figure 49: EXISTING - 11:00 GMT

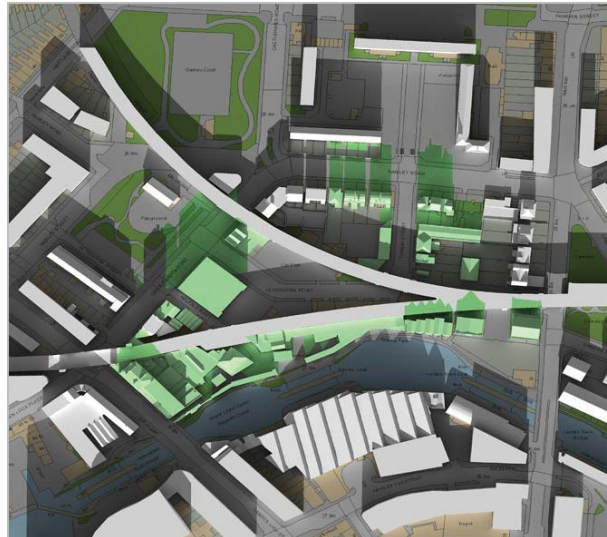


Figure 50: EXISTING - 12:00 GMT

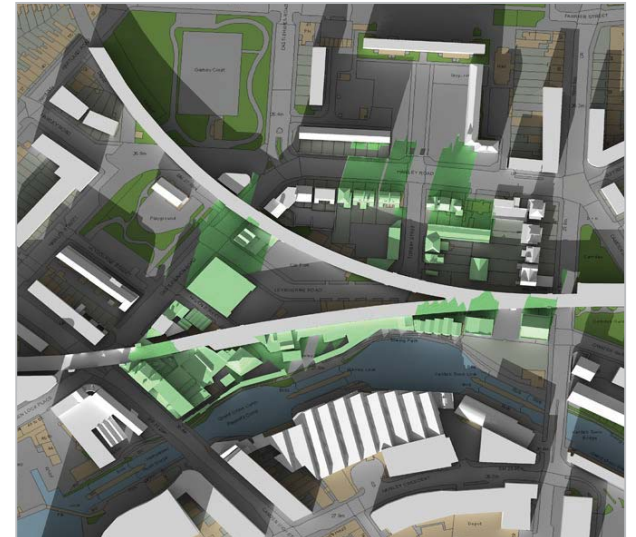


Figure 51: EXISTING - 13:00 GMT

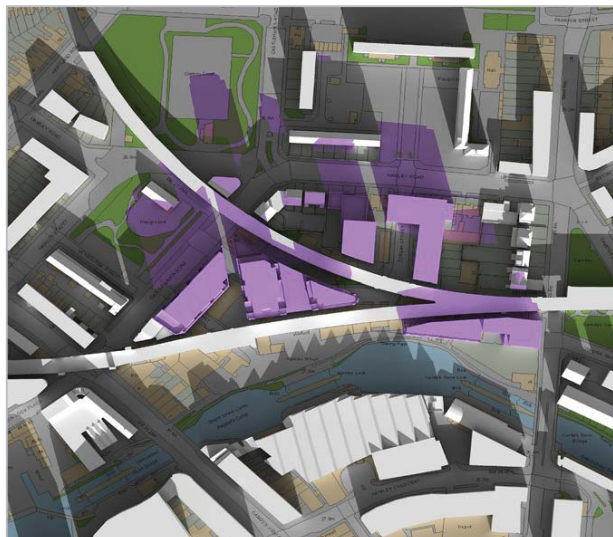


Figure 52: PROPOSED - 11:00 GMT

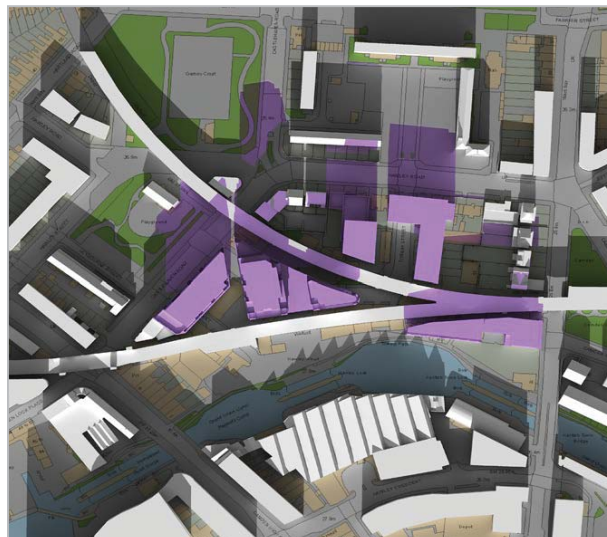


Figure 53: PROPOSED - 12:00 GMT

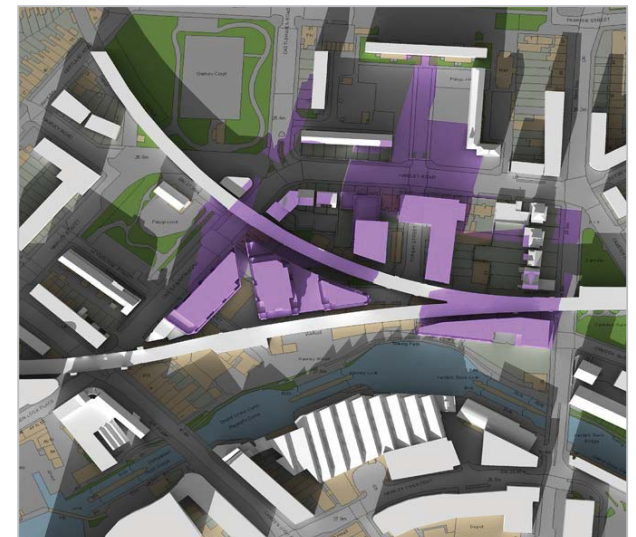


Figure 54: PROPOSED - 13:00 GMT



2801 - Camden Lock Village Transient Overshadowing Assessment - Western Parameter

Transient Overshadowing Assessment - 21st December

Sources of information:

- IR76-80_2801

Issue No:

IS4-2801

Page No:

13

Date:

December 28, 2011

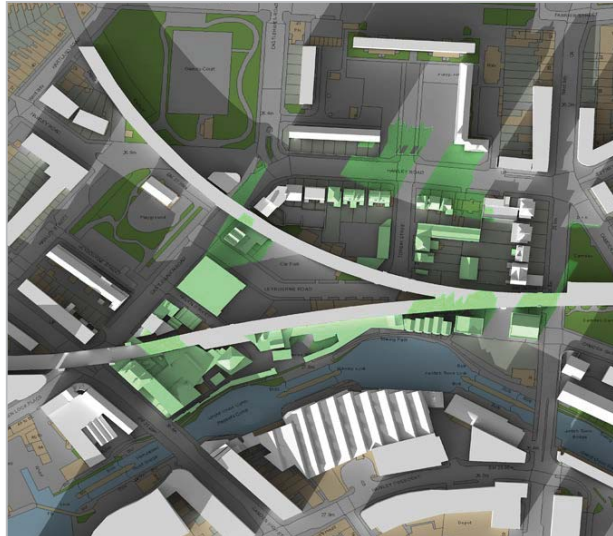


Figure 55: EXISTING - 14:00 GMT



Figure 56: EXISTING - 15:00 GMT

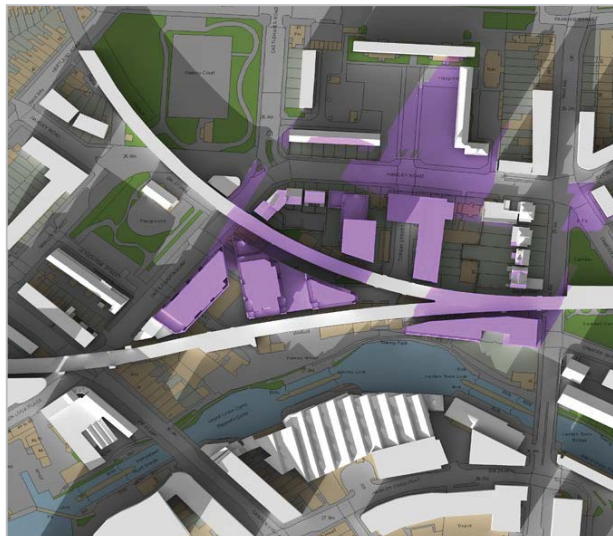


Figure 57: PROPOSED - 14:00 GMT

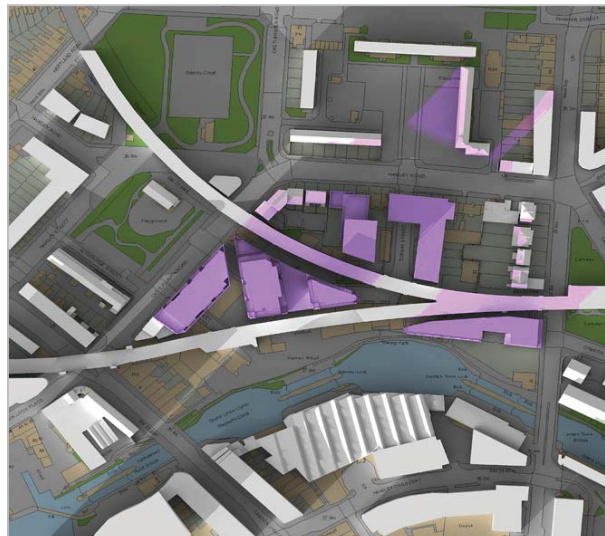


Figure 58: PROPOSED - 15:00 GMT



Transient Overshadowing Assessment Eastern Parameter

Camden Lock Village
Project No: 2801

December 28, 2011



DAYLIGHT+SOLAR DESIGN

gja



DAYLIGHT+SOLAR DESIGN



2801 - Camden Lock Village Transient Overshadowing Assessment - Eastern Parameter

Sources of information:

- IR76-80_2801

Issue No:

IS4-2801

Page No:

2

Date:

December 28, 2011

Client	Stanley Sidings Ltd
Architect	AHMM & MAKE
Project Title	Camden Lock Village
Project Number	2801
Report Title	Transient Overshadowing Assessment - Eastern Parameter
Dated	December 28, 2011

Written by	Alex Buckley
Checked by	SP
Type	Planning

Revisions	Date:	Notes:	Signed:
--	--/--/--	--	--



2801 - Camden Lock Village Transient Overshadowing Assessment - Eastern Parameter

Transient Overshadowing Assessment - 21st March

Sources of information:

- IR76-80_2801

Issue No:

IS4-2801

Page No:

3

Date:

December 28, 2011

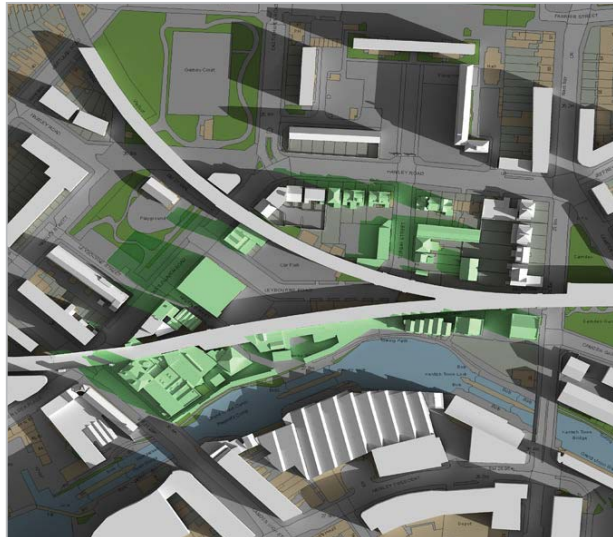


Figure 1: EXISTING - 08:00 GMT

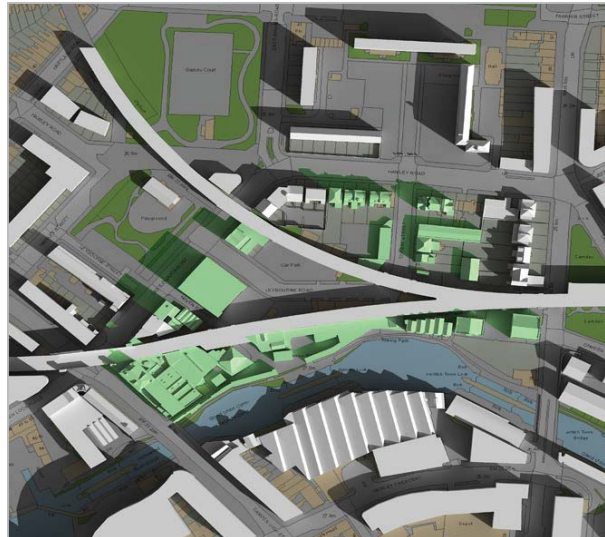


Figure 2: EXISTING - 09:00 GMT

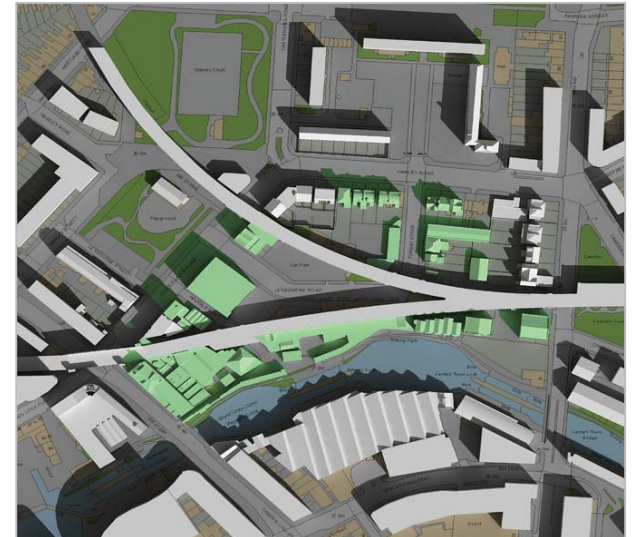


Figure 3: EXISTING - 10:00 GMT

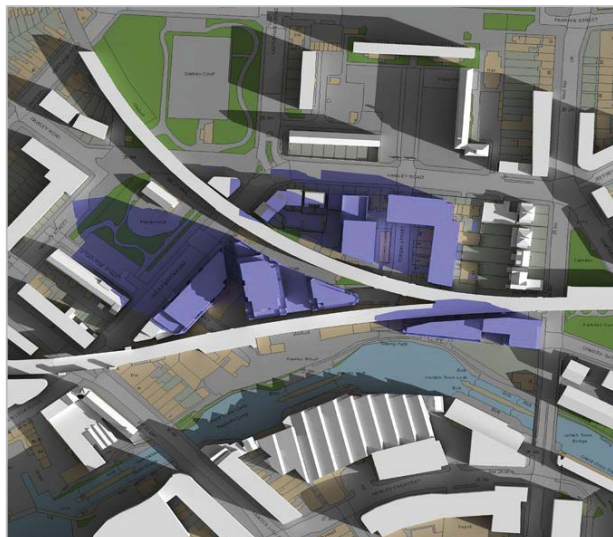


Figure 4: PROPOSED - 08:00 GMT

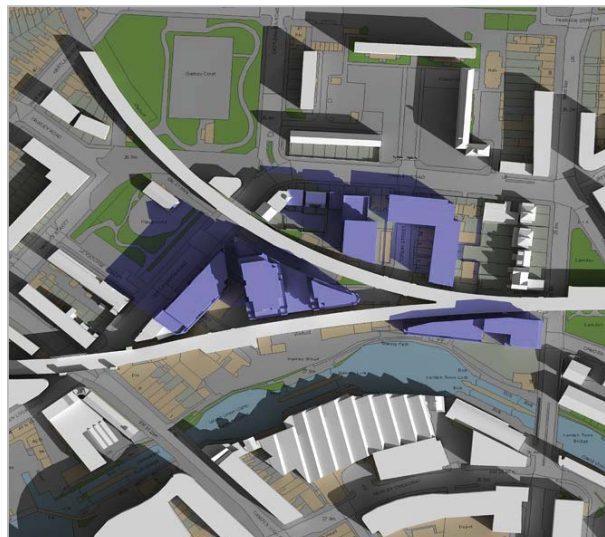


Figure 5: PROPOSED - 09:00 GMT

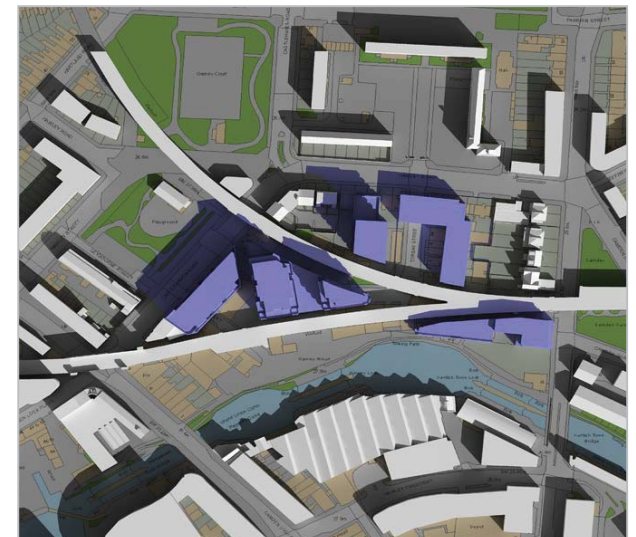


Figure 6: PROPOSED - 10:00 GMT



2801 - Camden Lock Village Transient Overshadowing Assessment - Eastern Parameter

Transient Overshadowing Assessment - 21st March

Sources of information:

- IR76-80_2801

Issue No:

IS4-2801

Page No:

4

Date:

December 28, 2011



Figure 7: EXISTING - 11:00 GMT



Figure 8: EXISTING - 12:00 GMT



Figure 9: EXISTING - 13:00 GMT

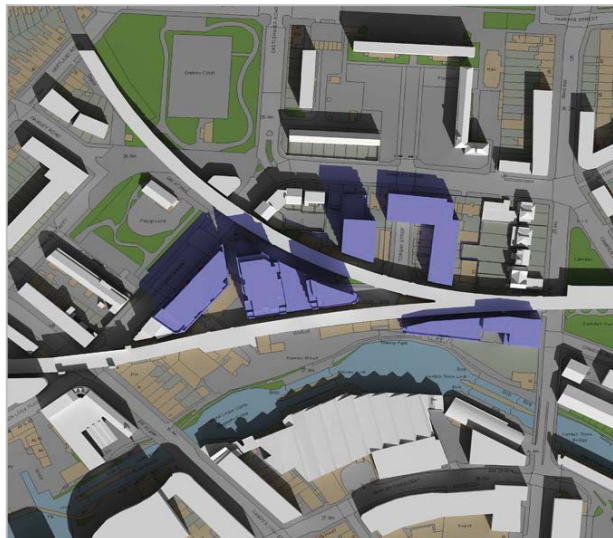


Figure 10: PROPOSED - 11:00 GMT



Figure 11: PROPOSED - 12:00 GMT



Figure 12: PROPOSED - 13:00 GMT



2801 - Camden Lock Village Transient Overshadowing Assessment - Eastern Parameter

Transient Overshadowing Assessment - 21st March

Sources of information:

- IR76-80_2801

Issue No:

IS4-2801

Page No:

5

Date:

December 28, 2011



Figure 13: EXISTING - 14:00 GMT

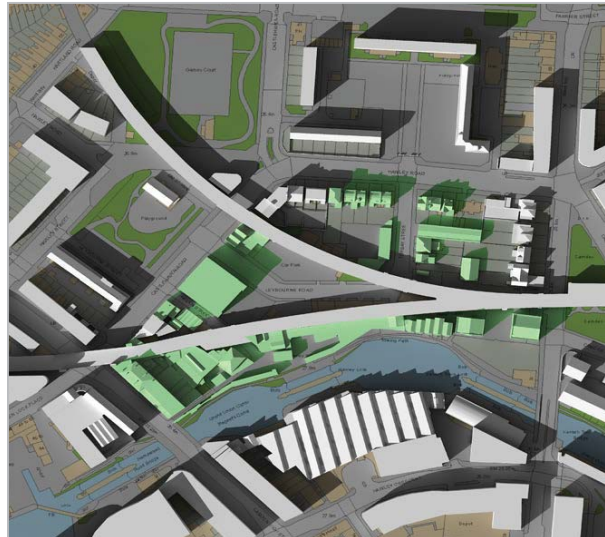


Figure 14: EXISTING - 15:00 GMT

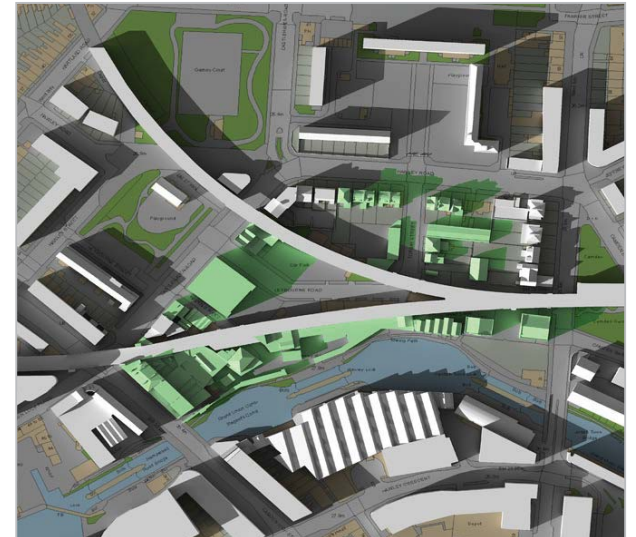


Figure 15: EXISTING - 16:00 GMT

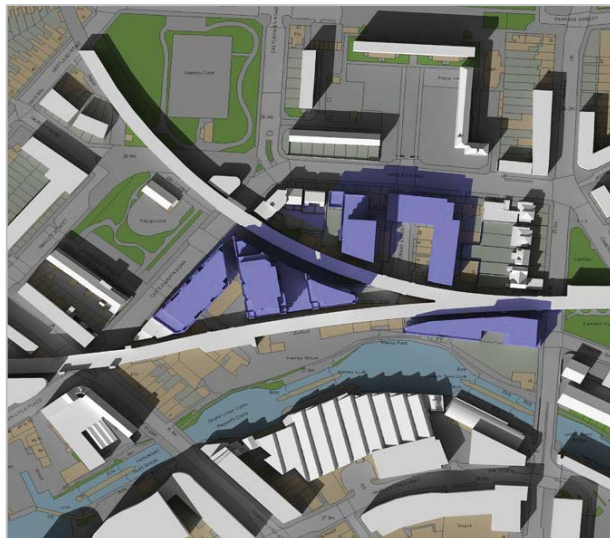


Figure 16: PROPOSED - 14:00 GMT

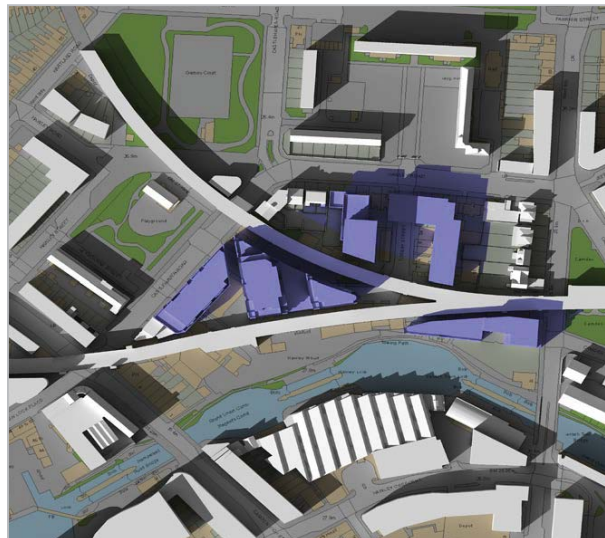


Figure 17: PROPOSED - 15:00 GMT

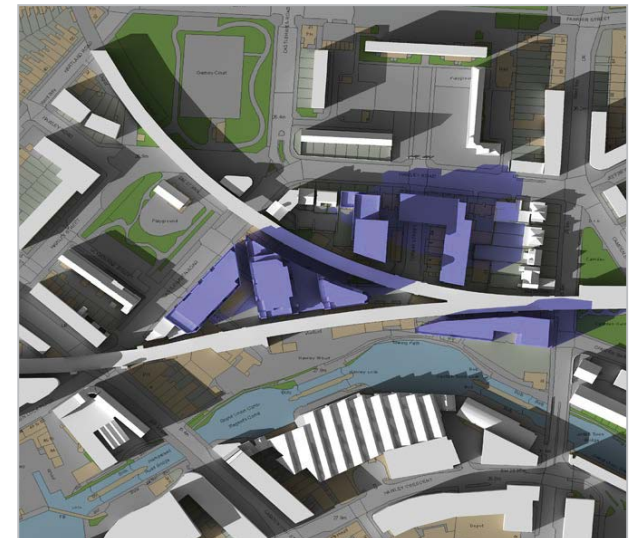


Figure 18: PROPOSED - 16:00 GMT



2801 - Camden Lock Village Transient Overshadowing Assessment - Eastern Parameter

Transient Overshadowing Assessment - 21st March

Sources of information:

- IR76-80_2801

Issue No:

IS4-2801

Page No:

6

Date:

December 28, 2011

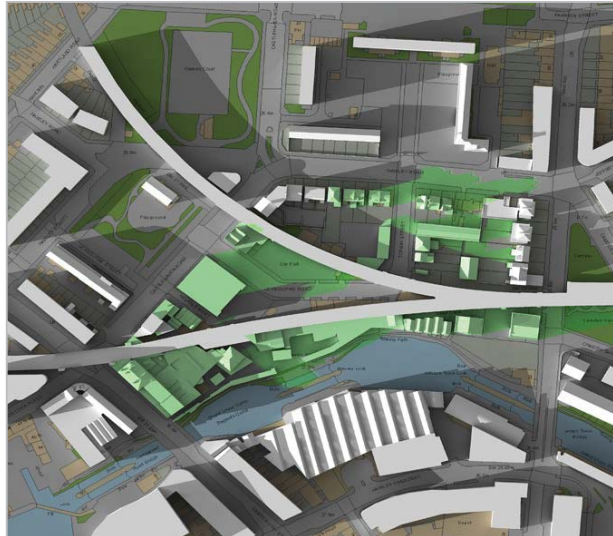


Figure 19: EXISTING - 17:00 GMT



Figure 20: EXISTING - 18:00 GMT

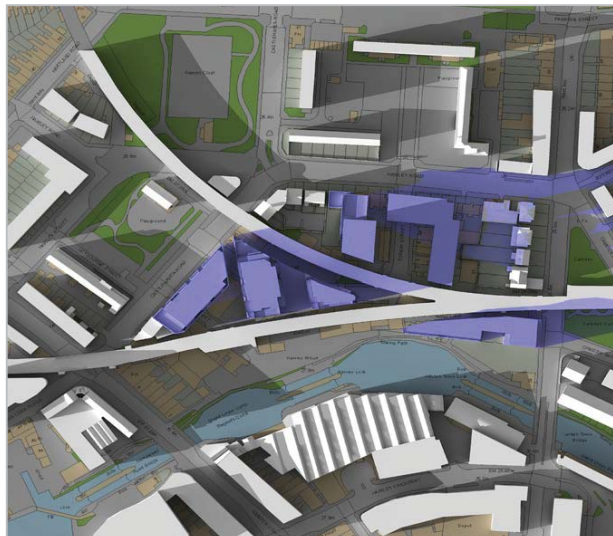


Figure 21: PROPOSED - 17:00 GMT



Figure 22: PROPOSED - 18:00 GMT



2801 - Camden Lock Village Transient Overshadowing Assessment - Eastern Parameter

Transient Overshadowing Assessment - 21st June

Sources of information:

- IR76-80_2801

Issue No:

IS4-2801

Page No:

7

Date:

December 28, 2011



Figure 23: EXISTING - 09:00 BST



Figure 24: EXISTING - 10:00 BST



Figure 25: EXISTING - 11:00 BST

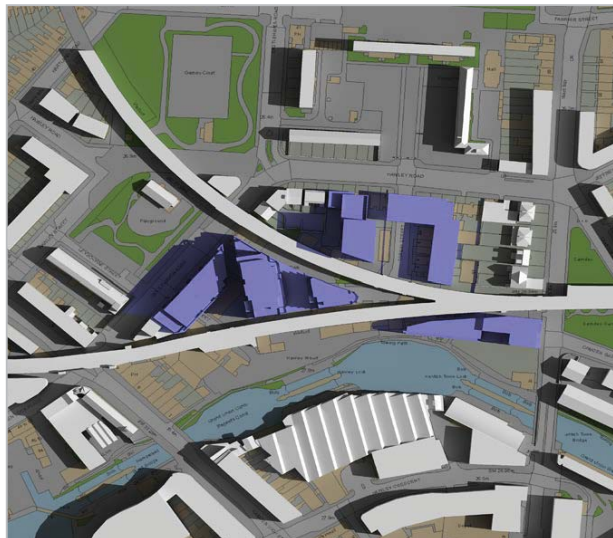


Figure 26: PROPOSED - 09:00 BST

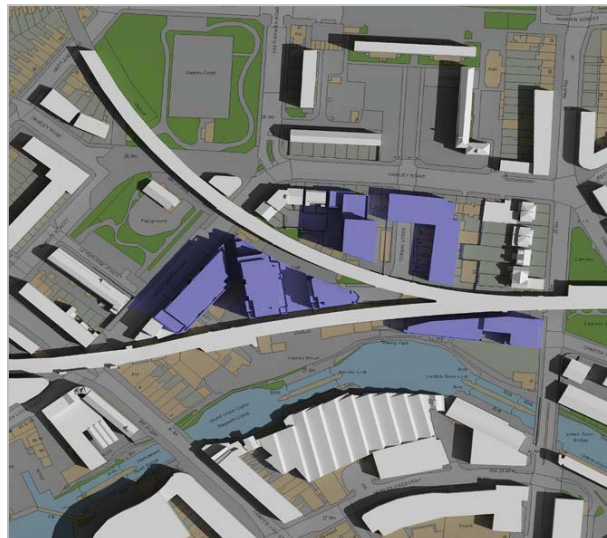


Figure 27: PROPOSED - 10:00 BST

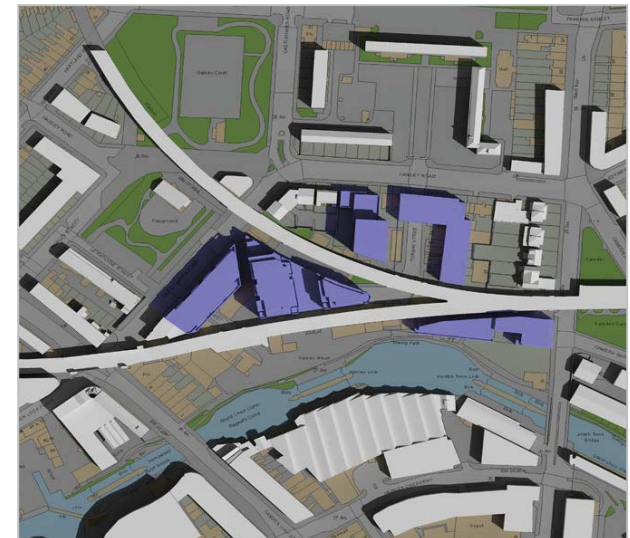


Figure 28: PROPOSED - 11:00 BST



2801 - Camden Lock Village Transient Overshadowing Assessment - Eastern Parameter

Transient Overshadowing Assessment - 21st June

Sources of information:

- IR76-80_2801

Issue No:

IS4-2801

Page No:

8

Date:

December 28, 2011



Figure 29: EXISTING - 12:00 BST



Figure 30: EXISTING - 13:00 BST



Figure 31: EXISTING - 14:00 BST

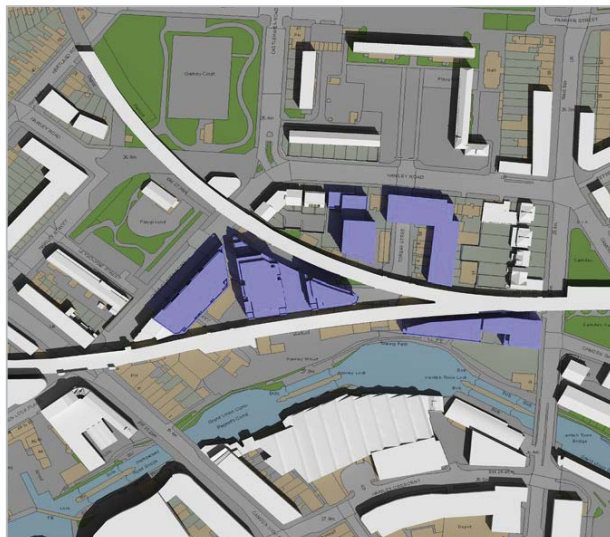


Figure 32: PROPOSED - 12:00 BST

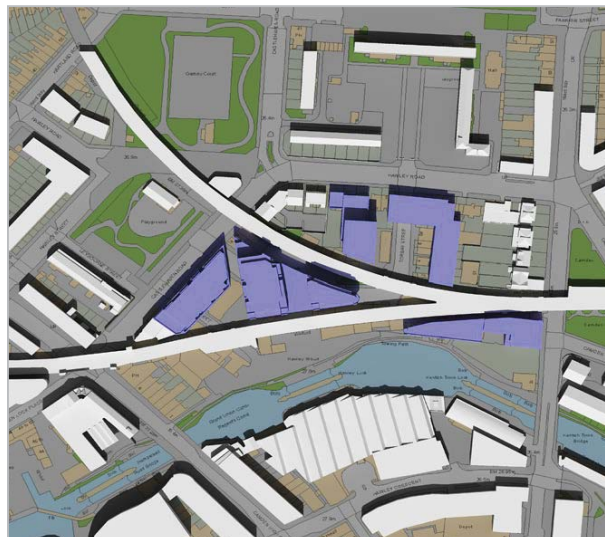


Figure 33: PROPOSED - 13:00 BST



Figure 34: PROPOSED - 14:00 BST



2801 - Camden Lock Village Transient Overshadowing Assessment - Eastern Parameter

Transient Overshadowing Assessment - 21st June

Sources of information:

- IR76-80_2801

Issue No:

IS4-2801

Page No:

9

Date:

December 28, 2011

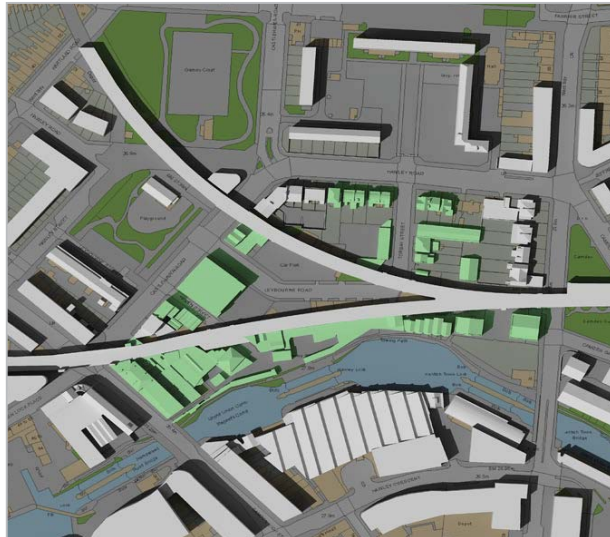


Figure 35: EXISTING - 15:00 BST



Figure 36: EXISTING - 16:00 BST

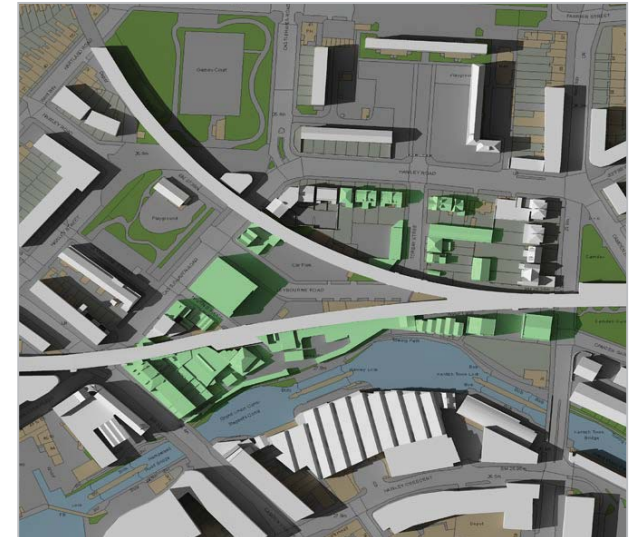


Figure 37: EXISTING - 17:00 BST

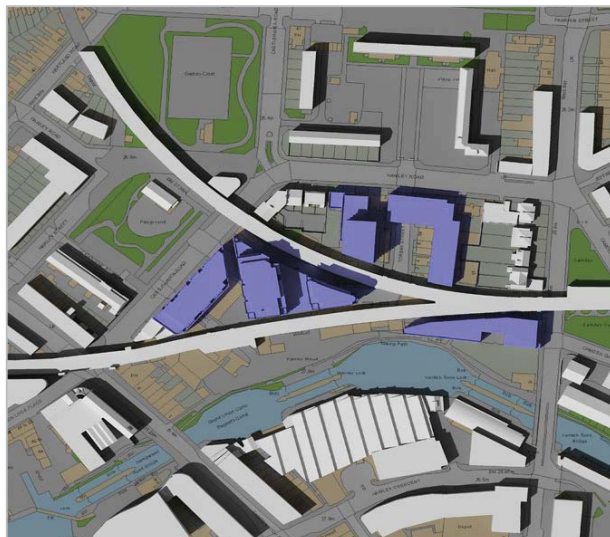


Figure 38: PROPOSED - 15:00 BST

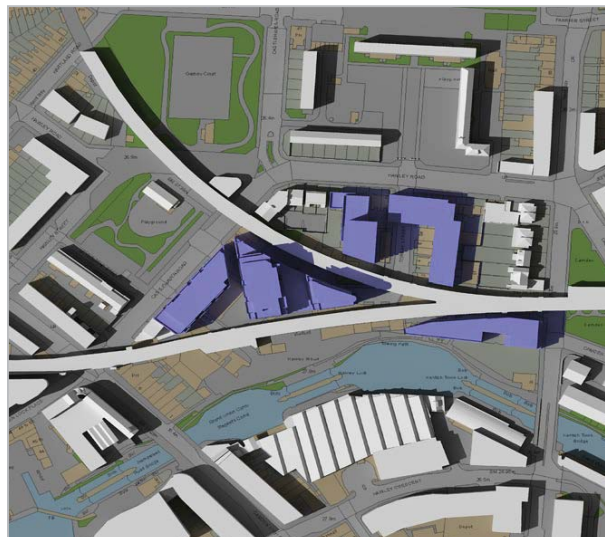


Figure 39: PROPOSED - 16:00 BST

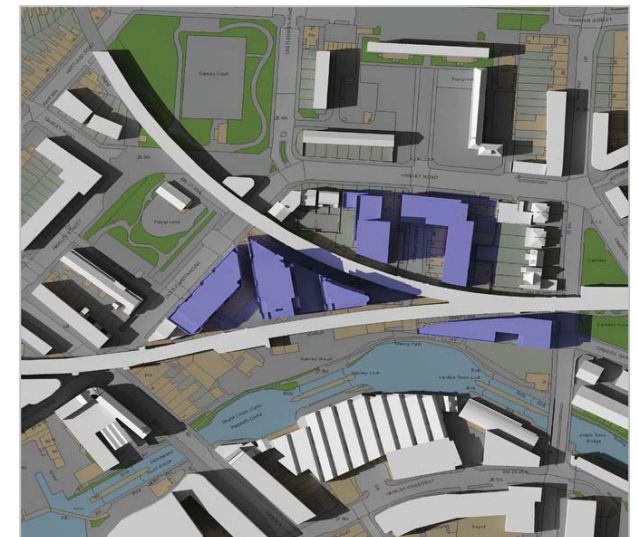


Figure 40: PROPOSED - 17:00 BST



2801 - Camden Lock Village Transient Overshadowing Assessment - Eastern Parameter

Transient Overshadowing Assessment - 21st June

Sources of information:

- IR76-80_2801

Issue No:

IS4-2801

Page No:

10

Date:

December 28, 2011

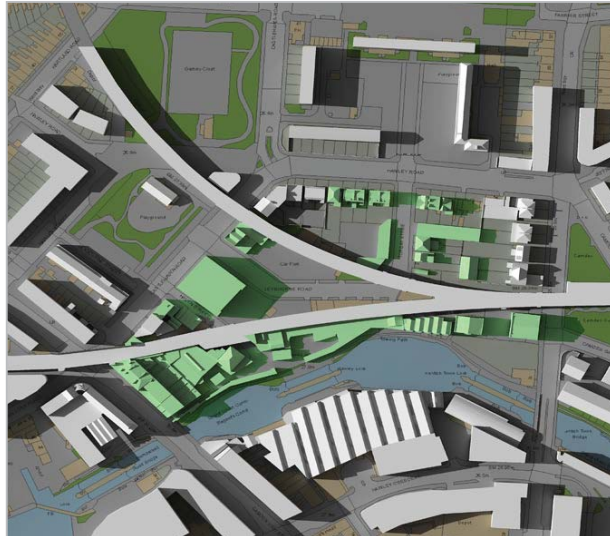


Figure 41: EXISTING - 18:00 BST

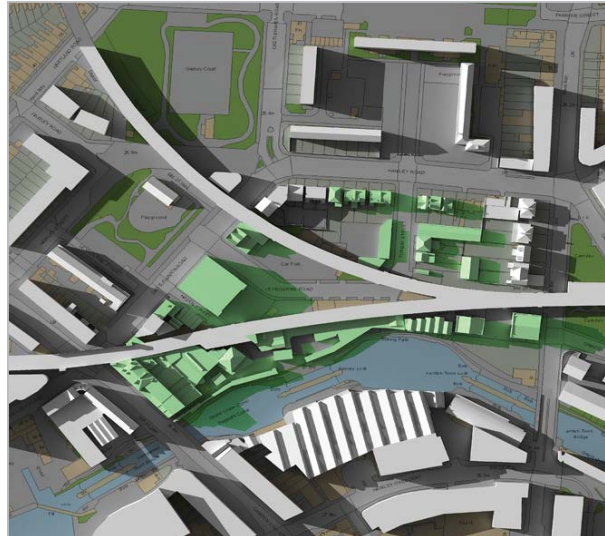


Figure 42: EXISTING - 19:00 BST

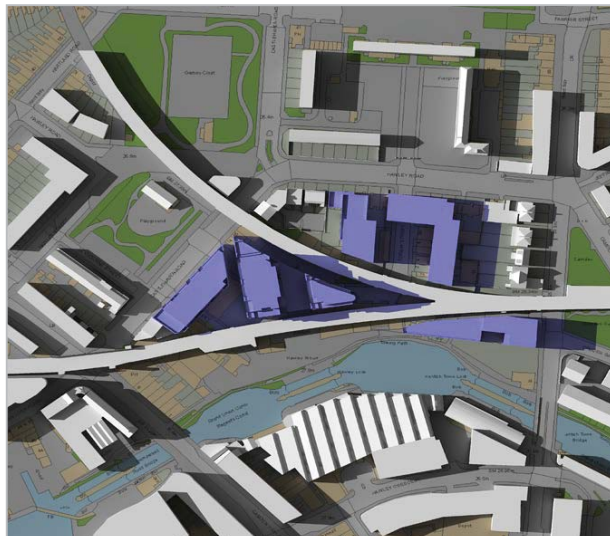


Figure 43: PROPOSED - 18:00 BST

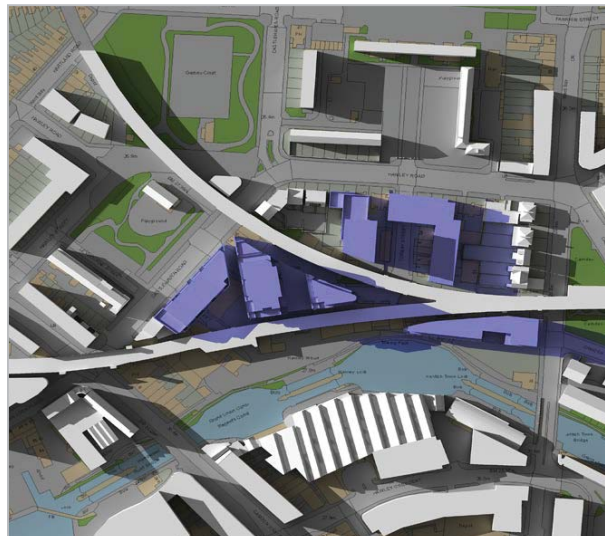


Figure 44: PROPOSED - 19:00 BST



2801 - Camden Lock Village Transient Overshadowing Assessment - Eastern Parameter

Transient Overshadowing Assessment - 21st December

Sources of information:

- IR76-80_2801

Issue No:

IS4-2801

Page No:

11

Date:

December 28, 2011



Figure 45: EXISTING - 09:00 GMT

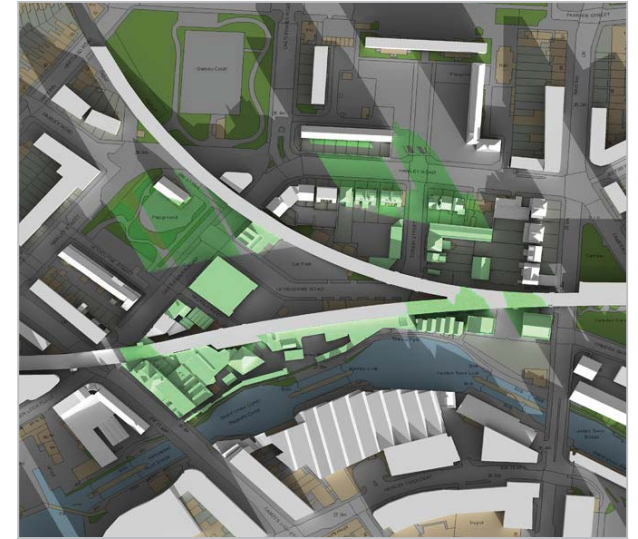


Figure 46: EXISTING - 10:00 GMT

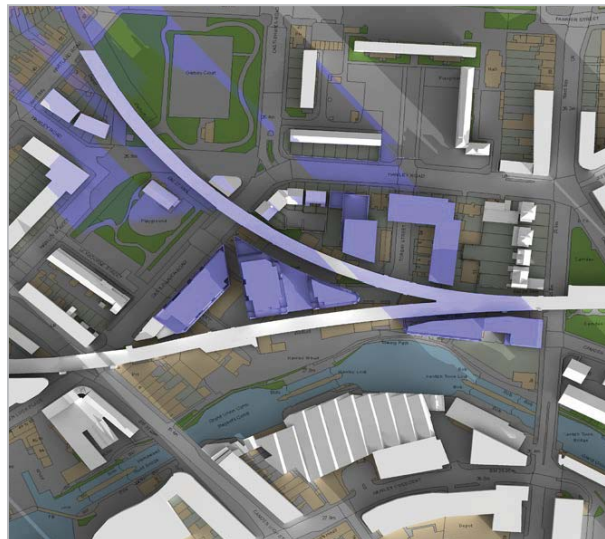


Figure 47: PROPOSED - 09:00 GMT

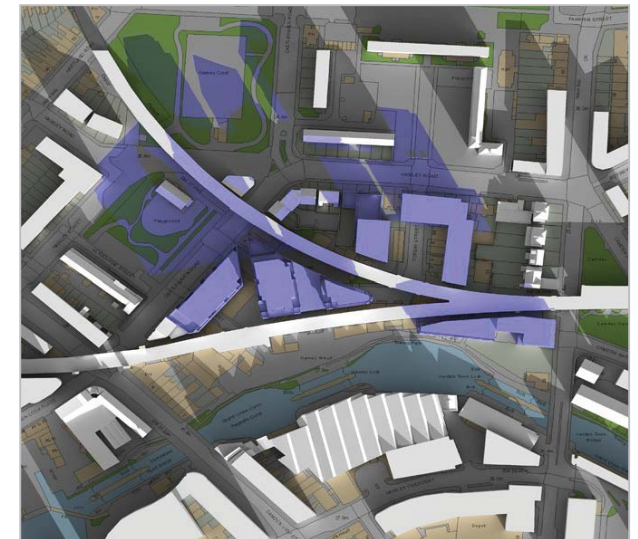


Figure 48: PROPOSED - 10:00 GMT



2801 - Camden Lock Village Transient Overshadowing Assessment - Eastern Parameter

Transient Overshadowing Assessment - 21st December

Sources of information:

- IR76-80_2801

Issue No:

IS4-2801

Page No:

12

Date:

December 28, 2011

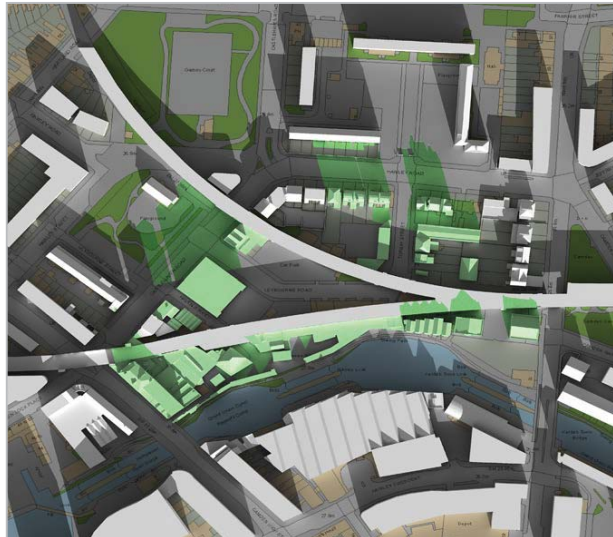


Figure 49: EXISTING - 11:00 GMT

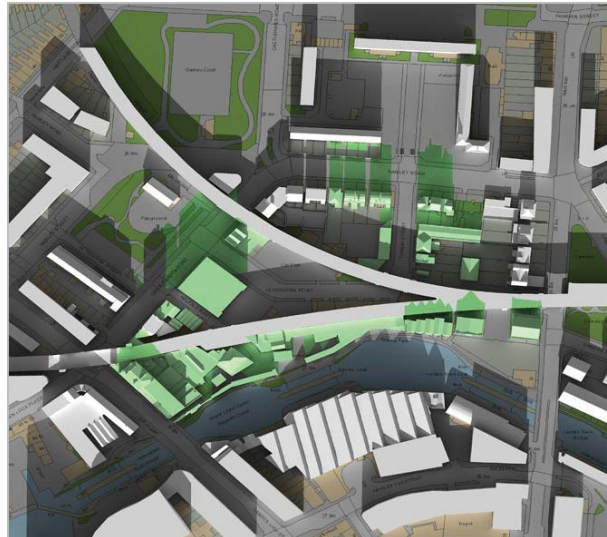


Figure 50: EXISTING - 12:00 GMT

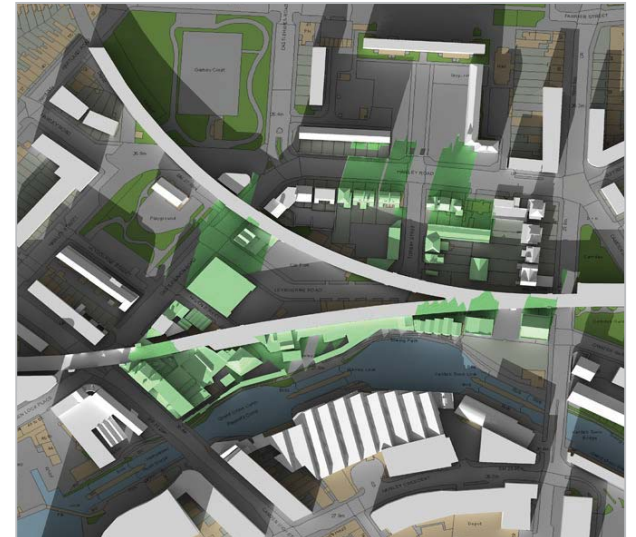


Figure 51: EXISTING - 13:00 GMT

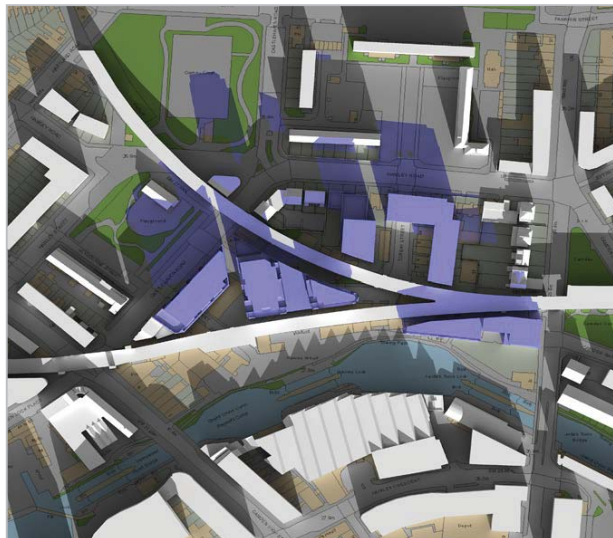


Figure 52: PROPOSED - 11:00 GMT

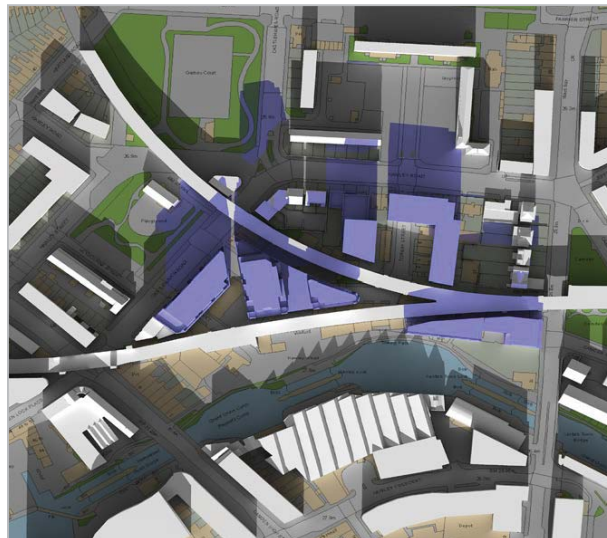


Figure 53: PROPOSED - 12:00 GMT

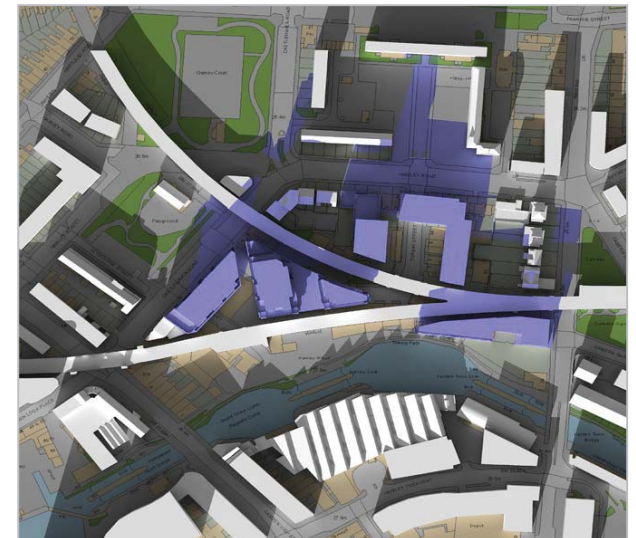


Figure 54: PROPOSED - 13:00 GMT



2801 - Camden Lock Village Transient Overshadowing Assessment - Eastern Parameter

Transient Overshadowing Assessment - 21st December

Sources of information:

- IR76-80_2801

Issue No:

IS4-2801

Page No:

13

Date:

December 28, 2011

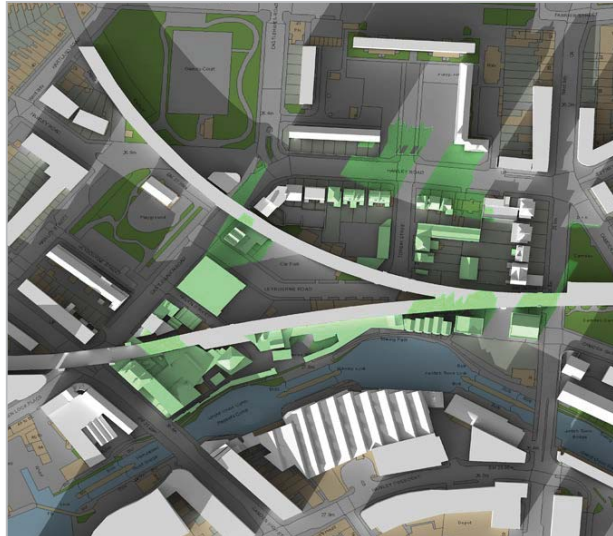


Figure 55: EXISTING - 14:00 GMT



Figure 56: EXISTING - 15:00 GMT

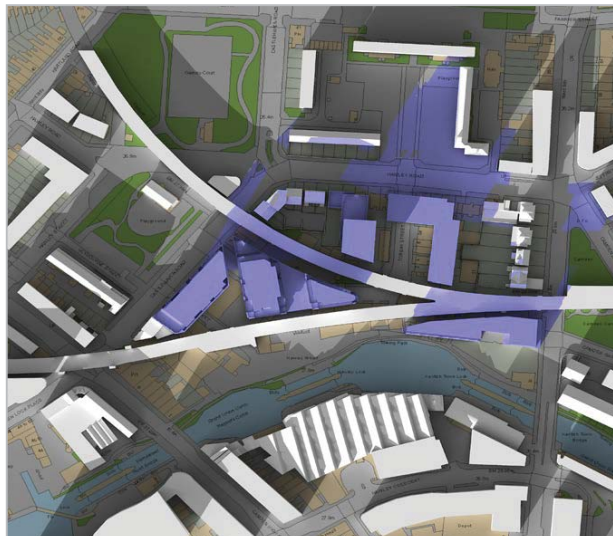


Figure 57: PROPOSED - 14:00 GMT

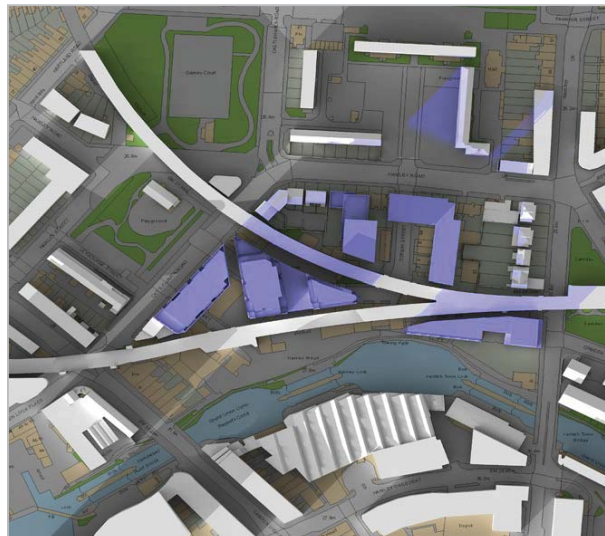


Figure 58: PROPOSED - 15:00 GMT