

DIESEL

GENERAL NOTES

THIS DRAWING IS INTENDED FOR DESIGN INDICATION ONLY NOT FOR USE AS CONSTRUCTION OR LOCAL PERMISSION. ACCURATE TECHNICAL DRAWINGS MUST BE PROVIDED BY LOCAL ARCHITECTS OR GENERAL CONTRACTORS AND/OR FURNITURE SUPPLIER.

DIESEL INTERIOR DESIGN DEPARTMENT IS NOT RESPONSIBLE FOR ANY DISCREPANCIES BETWEEN THE PRESENT DRAWINGS AND THE REAL DIMENSIONS ON SITE.

GENERAL NOTES

THIS DRAWING IS INTENDED FOR DESIGN INDICATION ONLY NOT FOR USE AS CONSTRUCTION OR LOCAL PERMISSION. ACCURATE TECHNICAL DRAWINGS MUST BE PROVIDED BY LOCAL ARCHITECTS OR GENERAL CONTRACTORS AND/OR FURNITURE SUPPLIER.

DIESEL INTERIOR DESIGN DEPARTMENT IS NOT RESPONSIBLE FOR ANY DISCREPANCIES BETWEEN THE PRESENT DRAWINGS AND THE REAL DIMENSIONS ON SITE.

REV.A. Amended to show new transom bars at same height as existing. 2012.01.09. IK



PROJECT

Covent Garden Refit

DRAWING TITLE

Facade elevations

CATEGORY

Refit

PROJECT TYPE

SELL AREA

SCALE

DATE

2011-12-07

DRAWN BY

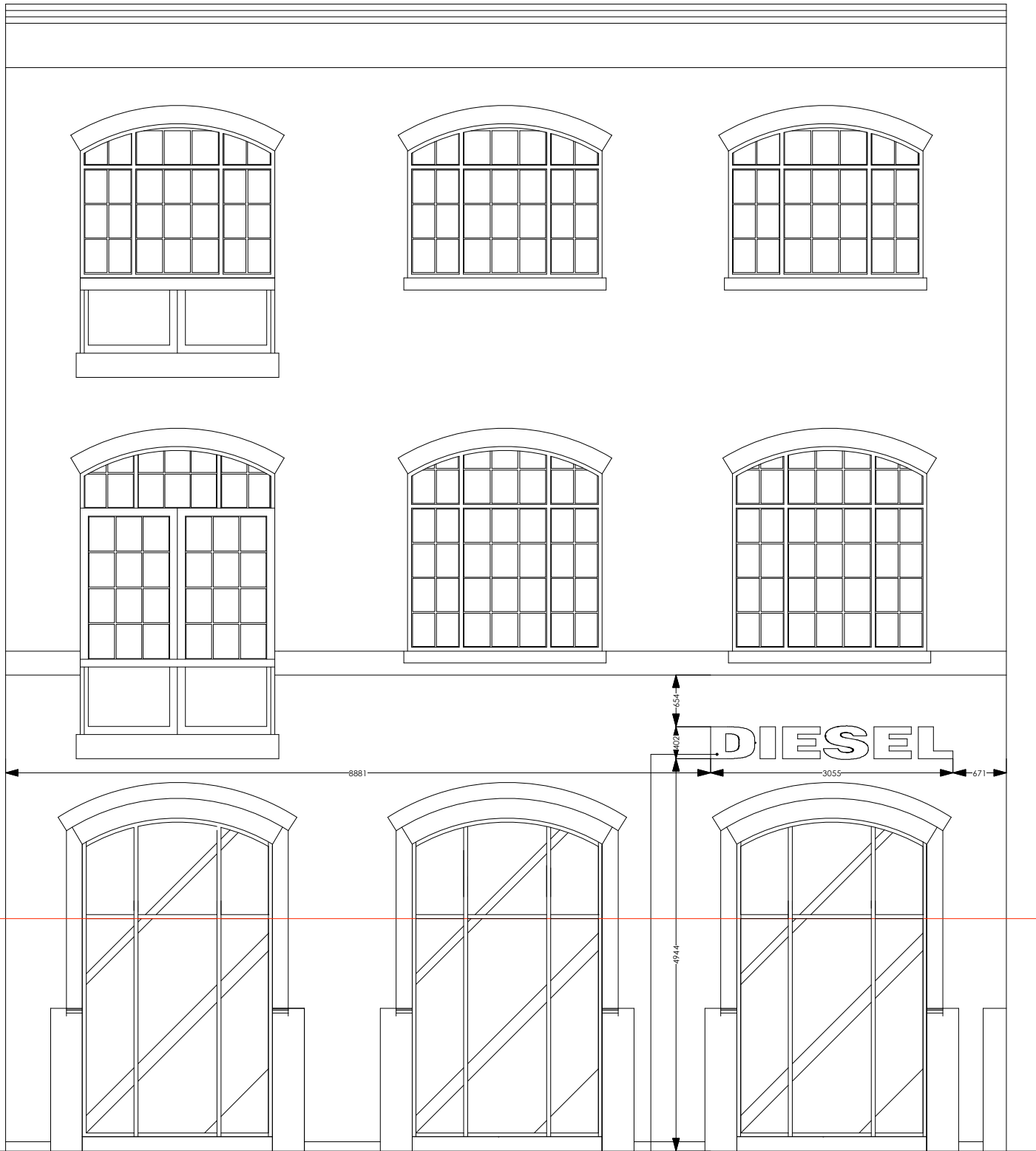
EC

DRAWING NUMBER

Ext.1

Rev:

A



EARLHAM STREET ELEVATION

Existing Diesel sign to be replaced with new halo illuminated sign (same position as existing)  
See signage drawing for full details and specification.

EARLHAM STREET ELEVATION

Existing window frames, doors and glazing to be removed on ground floor level.

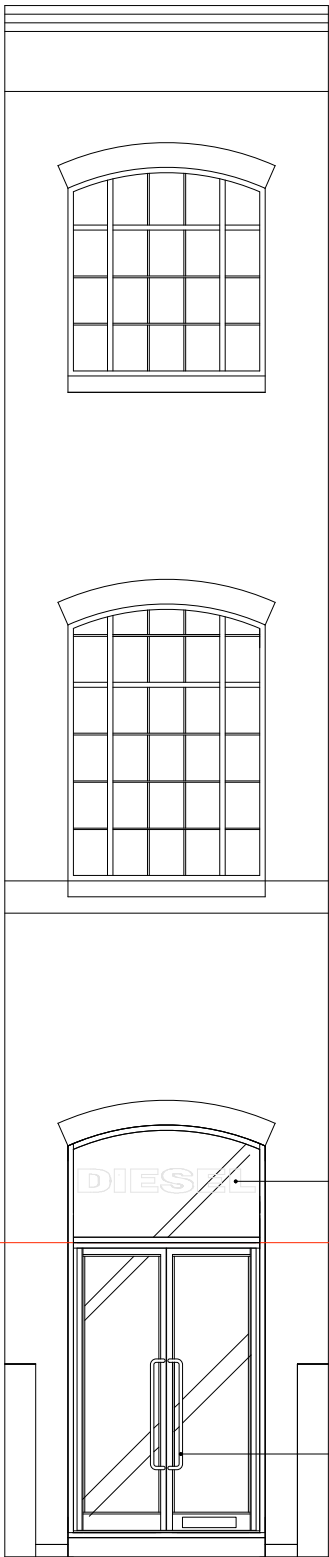
All existing window and door openings to be retained together with all existing structural elements and cills.

Install new laminated glazing with frames to match sample 'black iron' (see photo)

Window frames and transom bars to be installed as shown to retain the character of the building and to compliment the vertical frames to windows on the upper floors.

Existing signage to be replaced with new Diesel lettering to same cap height and position

New signs to be halo illuminated - see signage drawing for full specification and details



ELEVATION  
Main entrance

New illuminated Diesel Logo (fixed internally)

new door handle (finish to match window and door frames)

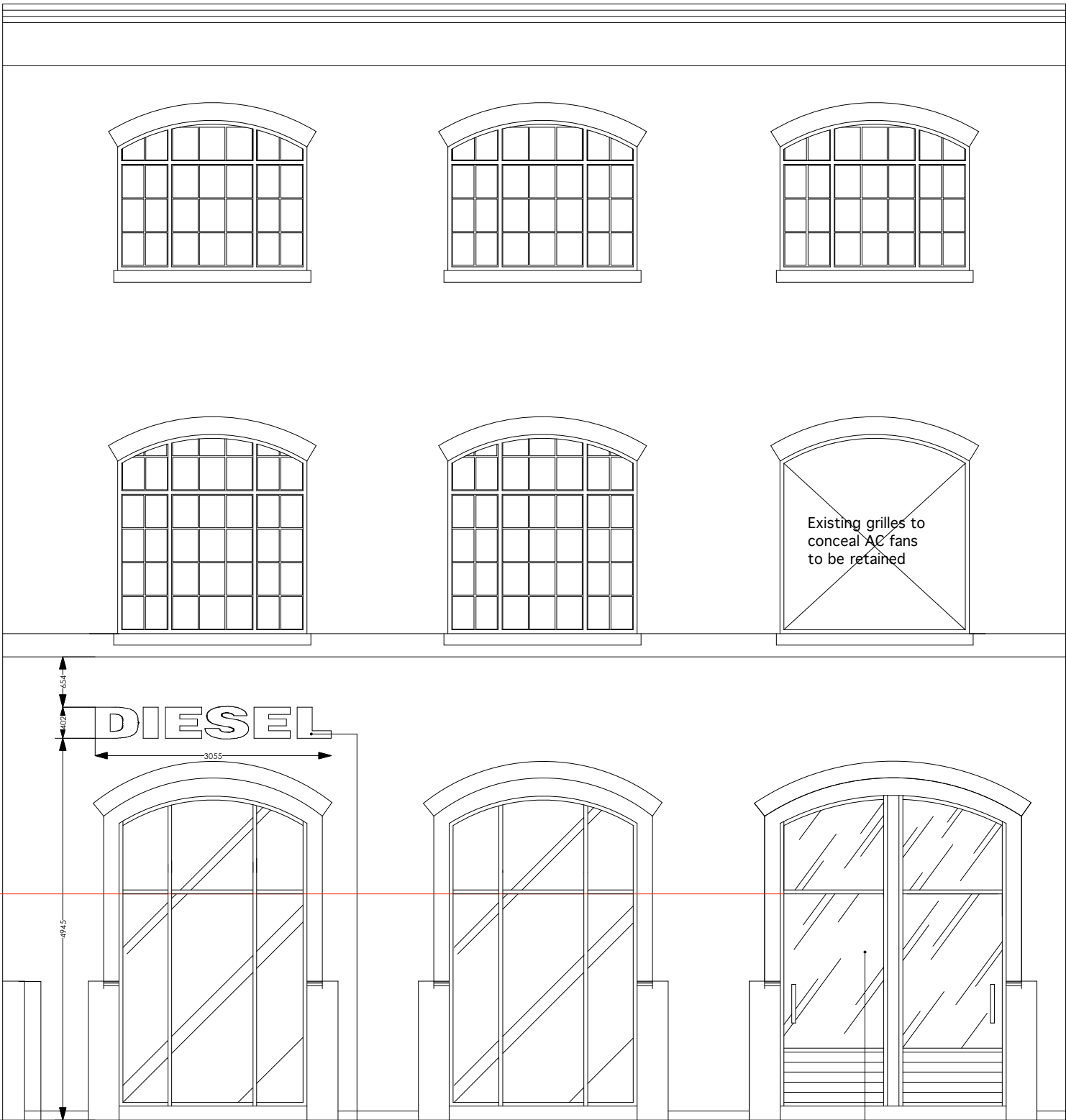
MAIN ENTRANCE ELEVATION

Remove existing signage from glazed transom  
install new illuminated signage behind the glazed transom so it is visible from the exterior.

New doors to match new window frames 'black iron' (see photo of sample)

Handles to match frames.

All other ironmongery to be confirmed



NEAL STREET ELEVATION

Existing Diesel sign to be replaced with new halo illuminated sign (same position as existing)  
See signage drawing for full details and specification.

Existing fire escape door to be ref  
Frames to be painted to match n  
windows

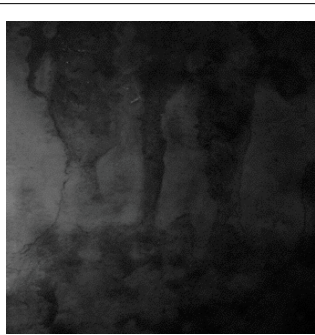
NEAL STREET ELEVATION

Existing Fire Escape to Diesel to be retained. Existing frames to be painted to match new window and door frames.

Existing entrance door to 25a Neal street to be retained. Existing frames to be painted to match new window and door frames.

New windows and frames to all other windows on the ground floor Neal Street elevation as shown.

Existing signage to be replaced with new Diesel lettering to same cap height and position  
New signs to be halo illuminated - see signage drawing for full specification and details



PHOTOGRAPHED SAMPLE OF 'BLACK IRON' CLADDING FOR WINDOW AND DOOR FRAMES. SAMPLE AVAILABLE UPON REQUEST



VISUALS OF PROPOSED WINDOW AND DOOR FRAMES

UPDATED  
IDD 2012-01-09