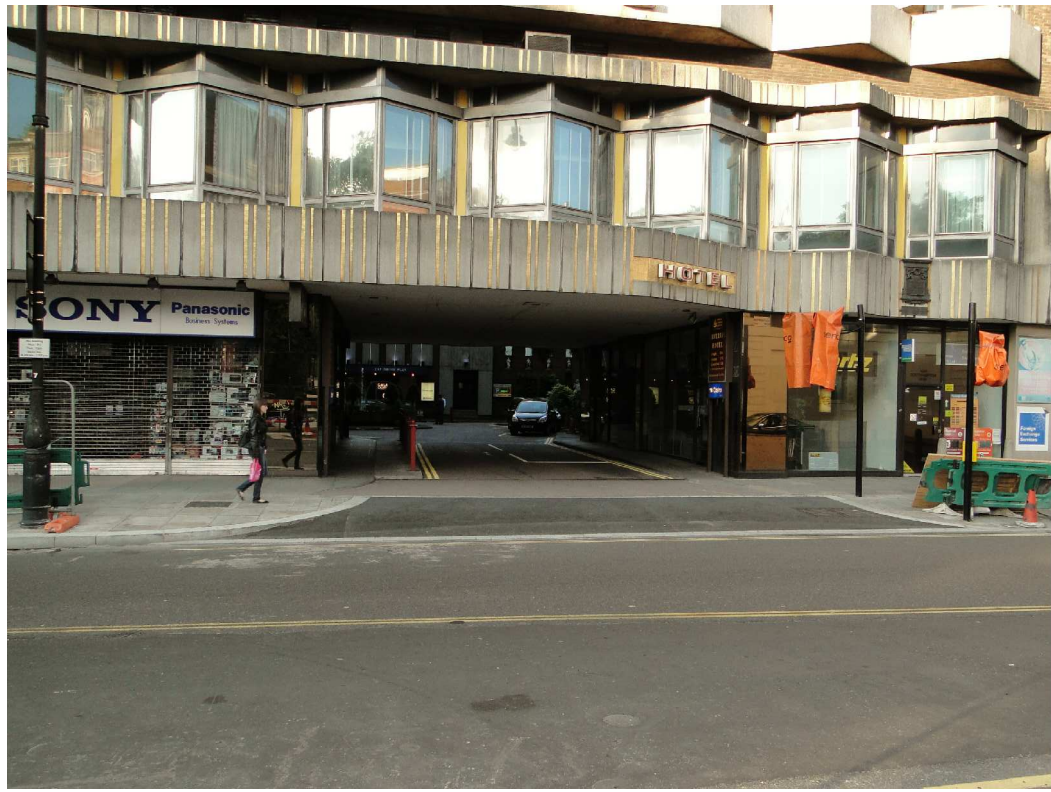


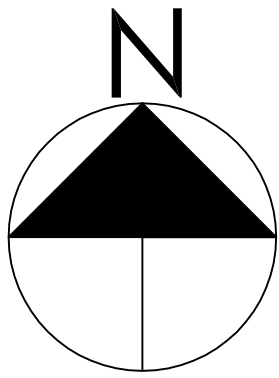
this drawing remains the property of fisch design limited and duplication of this drawing in whole or any part is strictly forbidden without prior written permission from fisch design ltd

all structural alterations are to be approved by a structural engineer

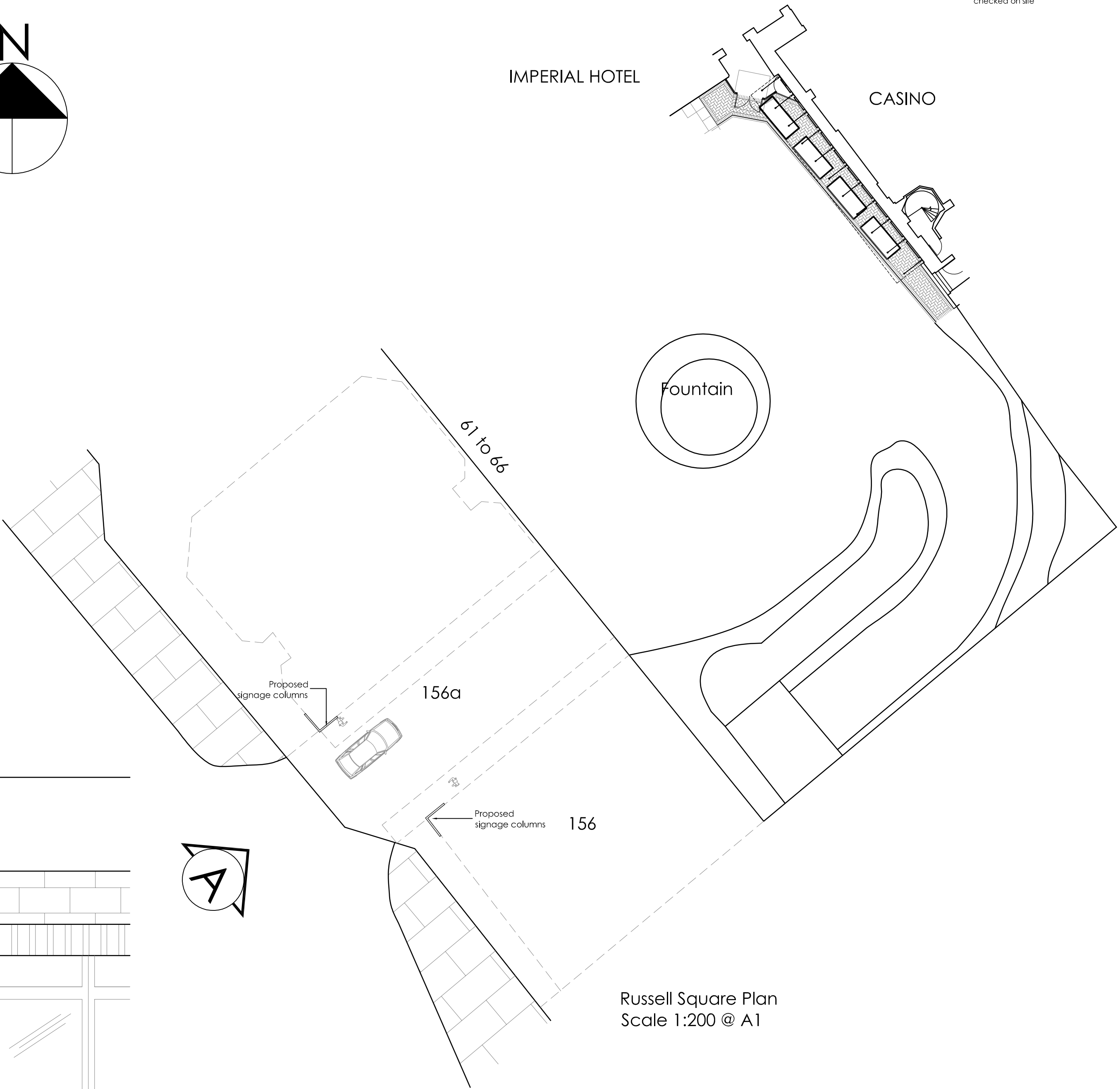
do not scale from this drawing, all dimensions to be checked on site



Photographs of Existing Russell Square Elevation

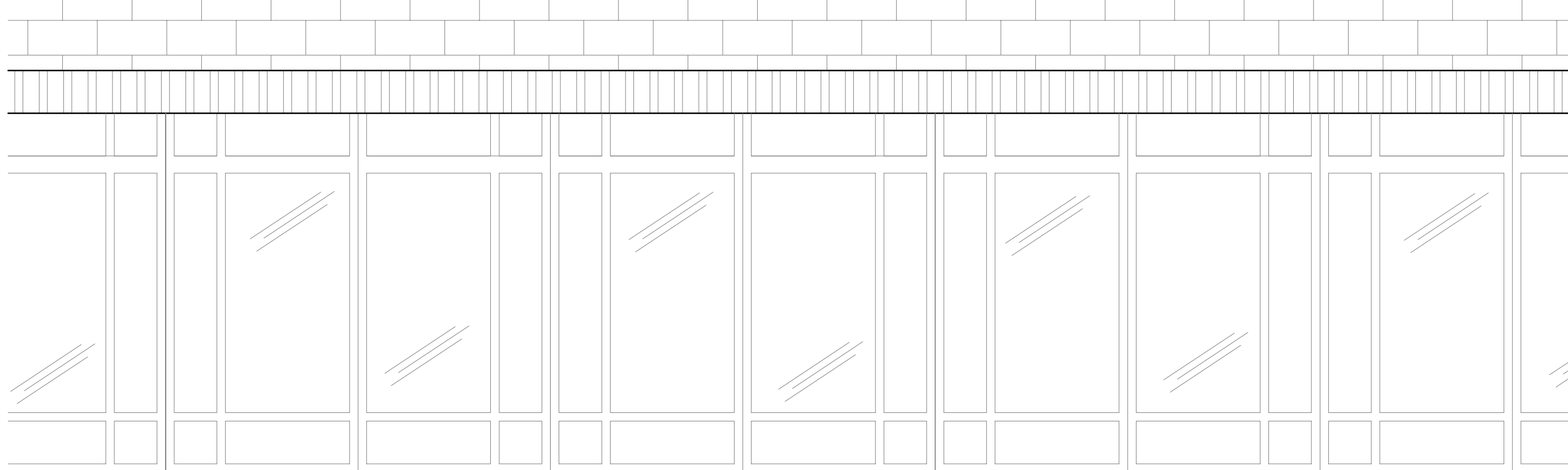


RUSSELL SQUARE



Russell Square Plan
Scale 1:200 @ A1

IMPERIAL HOTEL



HOTEL

A

IMPERIAL
HOTEL
RUSSELL SQUARE
CASINO
BY GALA CASINOS

Entrance to hotel,
casino and car park

IMPERIAL
HOTEL
RUSSELL SQUARE
CASINO
BY GALA CASINOS

Reclad corners of entrance in a
aluminium casing split into 3,
where the middle is to be used for
The Imperial Hotel, and bottom for
Gala Casino. Column aluminium
finished in a light grey colour.

Imperial Hotel signage to hotels
specification
Form 10mm shadow gap between
sections
Internally illuminated white lettering
to front face. Refer to Signage
Contractors drawings for details

Hotel signage to
landlords specification
internally illuminated by
cool white lamps.

Casino signage to be
individual built up letters
in acrylic white opal 050,
internally illuminated by
cool white lamps.
Illuminance 1300 cd/m

Section Thro' A-A

Proposed Russell Square Elevation A

INDICATIVELY DRAWN FROM PHOTOGRAPHS
AND WILL NEED A SITE SURVEY. FOR SIGNAGE
VISUALS REFER TO FISCH PDF DOCUMENT:
RUSSELL SQUARE_SIGNAGE PROPOSAL

Planning

dwg no: **617-PL02** revision: **C**

client: **Gala Coral Group Ltd**

project: **Russell Square Casino
The Imperial Hotel
61-66 Russell Square
London, WC1B 5BA**

title: **Proposed Russell
Square Elevation**

origin: **ML** checked:
scale: **1:50/200 A1** date: **02.09.11**

fisch

fisch design ltd unit 3 heritage business centre clerby road belper de56 1pw
t+44 (0) 1773 828222 f+44 (0) 1773 826327
mail@fischdesign.co.uk www.fischdesign.co.uk