

**SECTION Through Window**  
Windows opened back against inner wall and over seating  
Scale: 1:25

***Proposed alterations to original and current shopfront***  
***Yog LK Ltd at 45 Charlotte Street, London W1T 1RS***



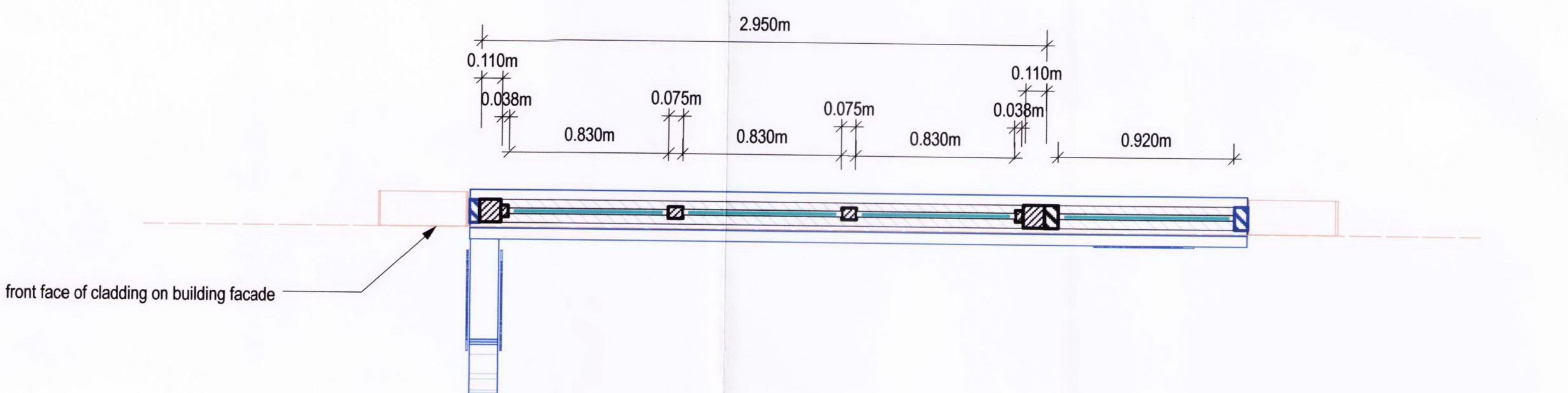
No 43 Charlotte Street CHIVERS  
No 45 Charlotte Street ORIGINAL FRONTAGE ( Damaged window and doorway - Rotten woodwork - required a total re-build )

Please note that Spacework Design Limited assumes that the enclosed design will be built to a satisfactory standard and cannot be held responsible for any construction or material failures during manufacture nor for any health and safety issues during site installation

**NOTES**

The above drawing indicates the proposed design changes to the shopfront at 45 Charlotte Street, London W1T 1RS from the frontage currently in place ( fascia and signage has advertising approval )  
Hence the areas requiring alteration are as follows:-  
Window and door frame - 3no fixed clear glass window lights and a fanlight above new transom line ( to match that of the adjacent shopfront at no 43 Chivers ) - New door to match the traditional design lines now envisaged with height adjustment to new transom line - New 3no set of main windows to match the lines of the fixed windows above ( opening concertina style during warm weather for a limited period during the summer ) - additional side trims to current stallriser to match vertical lines

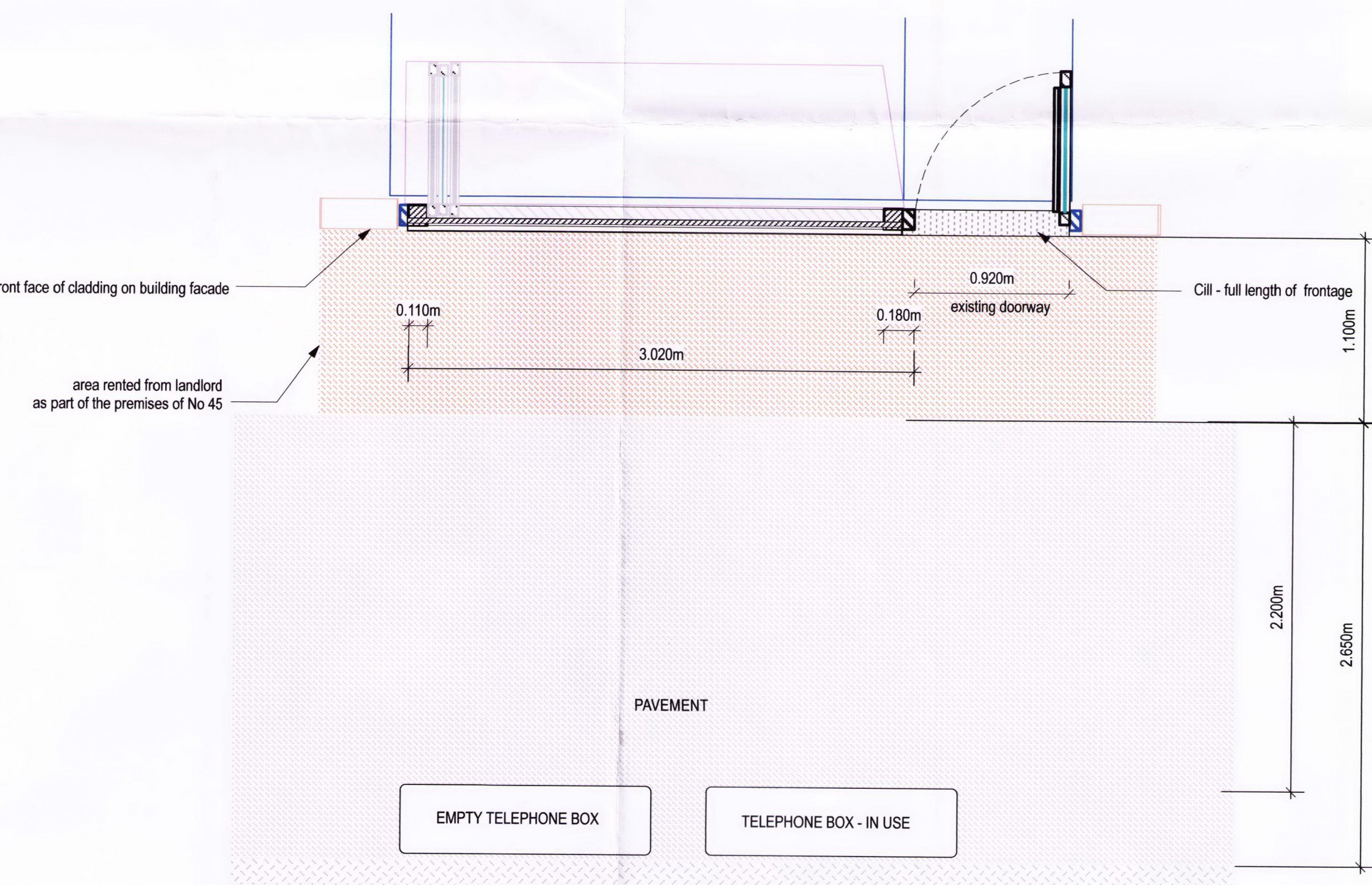
All framework will be in hardwood painted matt white as current  
Frame sizes are designed to re-use as much of the current material as possible thereby facilitating the re-construction in budget and scheduling terms - overall window opening dimension now less than current void with new substantial door/window posts - door width to remain - height to lower to match traditional lines  
Alteration to stallriser height is not possible as this is dictated by the basement ceiling from no 43 rising up with the inner window area of no 45



**PLAN - UPPER NEW FIXED WINDOWS 3no / Fanlight 1no ABOVE NEW TRANSOM**  
**APPROVED SIGNAGE**  
Scale: 1:25



**PLAN - MAIN NEW OPENING WINDOWS ABOVE NEW TRANSOM AND APPROVED SIGNAGE**  
Scale: 1:25



**PLAN - GROUND LEVEL and pavement**  
Scale: 1:25

**SECTION / PLANS**  
**window lights / main windows / ground**  
Drg no YG.3015.11 - 1 Front elevations and visual to be read in conjunction with this drg

Drg: **YG.3015.11 - 2**  
scale: 1:25  
drawn: LJW 4 25 Nov 2-11  
A:

**Yog LK LTD - Mr Es Salih**  
**Shopfront - 45 Charlotte Street, London W1T 1RS**

**SPACEWORK-DESIGN**  
creative solutions for retail design - exhibitions - branding  
SPACEWORK DESIGN LIMITED 'THE STUDIO' 1/2 LONG ROW FLOOD STREET MERSHAM ASHFORD KENT TN25 7HD  
info@spacework-design.com +44 01233 720866 www.spacework-design.com

Scale 1:25 @ A1 drg